



The Southern Ohio Correctional Facility

April 4-5, 2011

**Gregory Geisler,
Report Coordinator**

TABLE OF CONTENTS

	PAGE
SECTION I. <u>INSPECTION PROFILE AND INSTITUTION OVERVIEW</u>	4
A. <u>INSPECTION PROFILE</u>	4
B. <u>INSTITUTION OVERVIEW</u>	5
C. <u>COST SAVINGS INITIATIVES</u>	5
D. <u>INMATE POPULATION</u>	5
1. <u>Security Threat Groups</u>	6
E. <u>STAFF DEMOGRAPHICS</u>	6
SECTION II. <u>CRITICAL CONCERNS AND POINTS OF PRIDE</u>	9
SECTION III. <u>CIIC STATUTORY REQUIREMENTS</u>	13
A. <u>ATTEND A GENERAL MEAL PERIOD</u>	13
B. <u>ATTEND AN EDUCATIONAL OR REHABILITATIVE PROGRAM</u>	13
C. <u>EVALUATE THE INMATE GRIEVANCE PROCEDURE</u>	13
SECTION IV. <u>KEY STATISTICS</u>	15
A. <u>USE OF FORCE</u>	15
B. <u>ASSAULTS</u>	16
C. <u>SUICIDES AND SUICIDE ATTEMPTS</u>	17
D. <u>INVESTIGATOR DATA</u>	17
SECTION V. <u>OPERATIONS</u>	19
A. <u>MEDICAL SERVICES</u>	19
B. <u>MENTAL HEALTH SERVICES</u>	19
C. <u>FOOD SERVICES</u>	20
D. <u>HOUSING UNITS</u>	21
E. <u>COMMISSARY</u>	23
F. <u>RECREATION</u>	23
SECTION VI. <u>PROGRAMS</u>	25
A. <u>EDUCATIONAL/VOCATIONAL PROGRAMMING</u>	25
B. <u>REENTRY/UNIT PROGRAMS</u>	25
C. <u>RECOVERY SERVICES</u>	25
D. <u>RELIGIOUS PROGRAMS</u>	26
E. <u>LIBRARY SERVICES</u>	26
SECTION VII. <u>CIIC CONTACTS AND CONCERNS</u>	27
A. <u>INQUIRIES</u>	30

TABLE OF CONTENTS

	PAGE
SECTION VIII. <u>APPENDIX</u>	31
A. <u>DRC ACTION PLAN</u>	31
B. <u>DATA TABLES</u>	36
Table 1. DRC Population and Prison Rated Capacity	36
Table 2. Staff Population Breakdown	37
Table 3. Inspector’s Report	39
Table 4. Use of Force with Racial Breakdown	40
Table 5. Use of Force with Racial and Monthly Breakdown	40
Table 6. Assaults: Inmate on Inmate	41
Table 7. Assaults: Inmate on Staff	41
Table 8. Suicide Attempts	42
Table 9. Investigator Monthly Report Summary by Type of Investigation ...	43
Table 10. Medical Services	44
Table 11. Mental Health Caseload by Institution	47
Table 12. Seriously Mentally Ill by Institution	48
Table 13. Monthly Academic Enrollment and Academic Waitlist	49
Table 14. GEDs Passed and Inmates on Academic Waitlist	50
Table 15. Inmate Enrollment in Educational Programs	51
Table 16. CIIC Contacts with Institutional Breakdown (DRC)	53
Table 17. CIIC Concerns with Institutional Breakdown (DRC)	54
Table 18. Top Ten Reported Concerns to CIIC	55
Table 19. Breakdown of Top Three Reported Concerns	55
C. <u>INSPECTION CHECKLISTS</u>	57
SECTION IX. <u>GLOSSARY OF TERMS</u>	109

**CORRECTIONAL INSTITUTION INSPECTION COMMITTEE REPORT
ON THE INSPECTION AND EVALUATION OF
SOUTHERN OHIO CORRECTIONAL FACILITY**

SECTION I. INSPECTION PROFILE AND INSTITUTIONAL OVERVIEW

A. INSPECTION PROFILE

Date of Inspection: April 4-5, 2011

Type of Inspection: Unannounced

CIIC Staff Present: Joanna Saul, Director
Darin Furderer, Inspector
Gregory Geisler, Inspector
Jamie Hooks, Inspector
Adam Jackson, Inspector
Carol Robison, Inspector

Facility Staff Present: Warden Donald Morgan

CIIC spoke with many additional staff throughout the course of the inspection.

Areas/Activities Included in the Inspection:

Inmate Dining Hall
Kitchen
Housing Units
Segregation
Recreation

Ohio Penal Industries Shop
Inmate Rehabilitation Programs
Library

B. INSTITUTION OVERVIEW

The Southern Ohio Correctional Facility (SOCF) is a 1,625 acre facility with 69 acres inside the fence, which opened in 1972. The facility is a level 4 security (maximum security) male institution. The institution’s current annual budget is \$50,745,434 and the daily cost per inmate is \$108.95. The most recent ACA accreditation occurred in September 2009 and reaccreditation was granted in 2010.

C. COST SAVINGS INITIATIVES

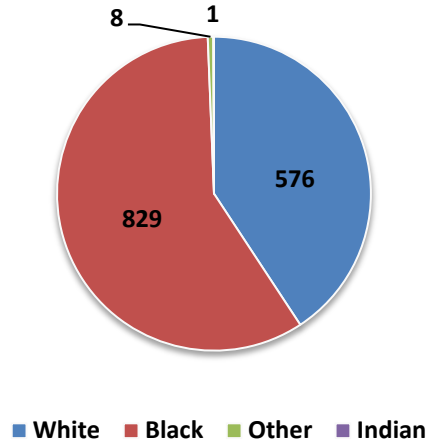
In the 129th General Assembly biennium, one of CIIC’s goals is to identify cost savings across the DRC. Staff relayed that representatives from each department meet together annually to brainstorm ideas for cost savings. Not only are the ideas implemented, but staff also report on the implementation at the next annual meeting, providing accountability. Overall, staff reported that cost savings initiatives implemented since 2006 have resulted in savings of over \$1.7 million. Staff reported the following cost savings measures recently implemented at SOCF:

Cost Saving Initiative	Projected Savings
Removal of steam from the laundry	Approximately \$40,000 annually
Utilize 2.4 shakedown to recover clothing items and reissue wearable items	\$4,000 annually
Issue hygiene items on an as-needed rather than weekly basis	\$15,200
Maintenance agreement not renewed	\$27,000
Utilization of inmate labor and maintenance staff for window project	\$100,000
New water contract	\$48,000 annually
Utilize OPI disinfectant concentrate	\$6,777
Restructure Food Services	\$70,000 annually
Energy conservation project	\$400,000

D. INMATE POPULATION

The rated capacity for SOCF is 1,540. The inmate count as of April 4, 2011 was 1,416. Table 1 in the Appendix provides information about the DRC population and prison rated capacity per institution as of April 4, 2011.

Chart 1
Breakdown of Inmate Population
April 4, 2011



1. Security Threat Groups

There are 125-150 identified security threat groups and 639 profiled STG affiliated inmates at SOCF. STG affiliated inmates are classified into three groups based on their participation level; disruptive, active, or passive. There were 133 inmates listed as disruptive (level 3), 86 inmates listed as active (level 2), and 420 inmates listed as passive (level 1).

- Aryan Brotherhood 96
- White Supremacist 90
- Crips 81
- Bloods 77
- Folk 60
- Heartless Felons 58
- People’s Nation 20

E. STAFF DEMOGRAPHICS

Of the 711 total staff at The Southern Ohio Correctional Facility (SOCF) as of April 1, 2011, 595 (84 percent) were male and 116 (16 percent) were female. Of the total staff, 671 (94 percent) were classified as white, 25 (4 percent) as black, and 15 (2 percent) as other. Table 2 of the Appendix provides more information about the staff population.

Chart 2
Breakdown of Staff Population
April 1, 2011

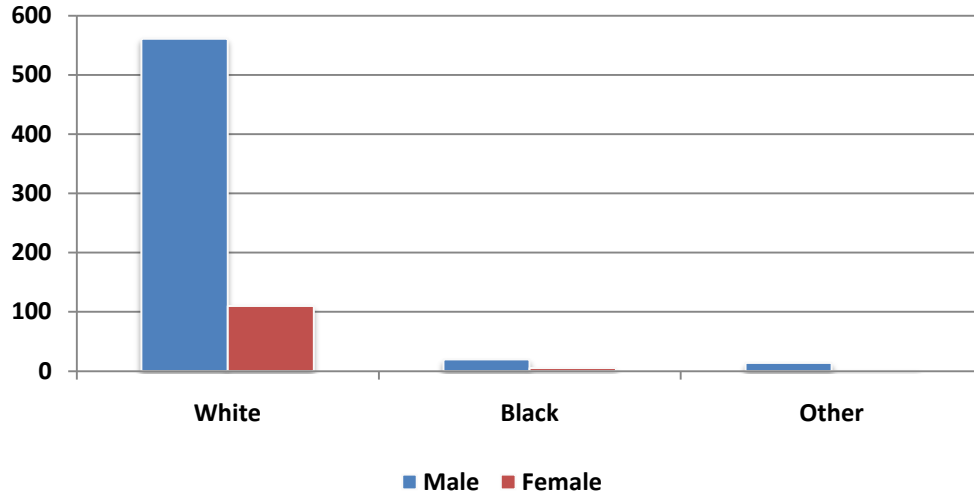
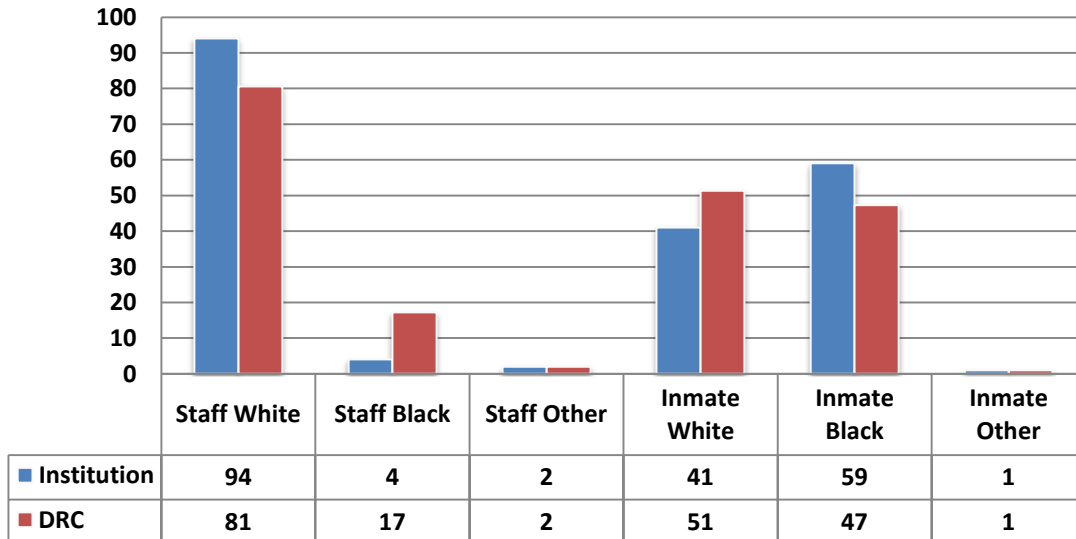


Chart 3
Staff and Inmate Comparison by Percentage of Race
April 1, 2011ⁱ



ⁱ The most current data on the racial breakdown of inmates available from the Department was February 2011.

There are 34 vacant positions at the institution, some of which have been vacant for several years. The vacancies consist of: two secretaries, two account clerks, an operations deputy, two store keepers, a stationary engineer, a maintenance worker, an electronics technician, a correctional program coordinator, an administrative assistant in medical, a nurse 1, a paralegal, a physician administrator, three psych nurses, a correctional advanced practice nurse, a psychologist supervisor, a social worker, an activity therapist administrator, a peal work shop supervisor, five correctional food service coordinators, an institutional ID officer, a correctional lieutenant, two correctional sergeants, a correctional program specialist, and a correctional specialist.

SECTION II. CRITICAL CONCERNS AND POINTS OF PRIDE

The following initial report was provided to the DRC Director, Assistant Director, Chief of Staff, South Regional Director, and the The Southern Ohio Correctional Facility (SOCF) Warden on April 6, 2011. CIIC received a response from DRC staff on April 27, 2011. The narrative response is provided in shaded boxes below the relevant CIIC concern; the DRC action plan is reproduced in Appendix A.

Initial Report of the CIIC Inspection of the Southern Ohio Correctional Facility April 4-5, 2011

On April 4 and 5, 2011, CIIC Director Joanna Saul, CIIC Inspector Darin Furderer, CIIC Inspector Gregory Geisler, CIIC Inspector Jamie Hooks, CIIC Inspector Adam Jackson, and CIIC Inspector Carol Robison inspected the Southern Ohio Correctional Facility. The following highlights the critical concerns and the points of pride observed during the inspection.

CRITICAL CONCERNS

USE OF FORCE

Numerous inmates alleged that line staff, particularly staff on second shift, are quick to use force and do not attempt to utilize verbal methods to deescalate situations. During the inspection, 80 inmates were asked to rate inmate safety on a scale of one to ten, with ten meaning “very safe.” The average of the inmate ratings of inmate safety was 5.8; invariably, low inmate ratings of inmate safety were attributed to fear of staff, rather than fear of other inmates. Inmates relayed that if staff would attempt to speak first instead of using force, there would be fewer incidents of violence at the institution. In individual interviews, staff relayed that the staff who have problems generally bring those problems onto themselves by not knowing how to communicate with inmates.

SOCF Response:

SOCF experienced a reduction in the total Use of Force incidents in 2010 (521) from the previous 2009 calendar year (779). Of those 2010 incidents 126 were referred to a Use of Force Committee as outlined per policy, 395 incidents were classified as slight use of force which did not require a committee investigation. Of those incidents in 2009, 109 were referred to a Use of Force Committee and 670 were classified as slight use of force. Institutional records reflect a total reduction of two hundred and fifty-eight (258) use of force incidents when comparing 2010 vs. 2009.

INMATE GRIEVANCE PROCEDURE

Many inmates relayed concerns that they would be retaliated against if they used the inmate grievance procedure. Others stated that informal complaints are never made available to them upon request from staff. During the inspection and repeatedly in letters to CIIC, inmates at the

Southern Ohio Correctional Facility questioned the impartiality of both the Inspector in investigating grievances and staff supervisors in responding to informal complaints.

SOCF Response:

Informal Complaints are maintained in all housing areas at SOCF for inmate utilization. All inmates receive a brochure which outlines the entire process regarding the Inmate Grievance Procedure during orientation as well as upon arrival in the receiving area. The SOCF Inspector conducts regular meetings with unit staff to address any inmate concerns. The Inspector will also have the Grievance Procedure placed on the Inmate Character Generator to ensure the inmates are familiar with the procedure.

DELAYS IN RECEIVING MEDICAL CARE

Inmates stated that they have to wait for extended periods of time to receive treatment from the institutional physician. Other inmates stated concerns about changes in medication.

SOCF Response:

BOMS was aware of the previous backlog; as a result, the allotted working hours surrounding the Advanced Level Provider was increased. In addition, the arrival of a full-time contract physician was approved along with the continued practice of utilizing an additional contract physician on an as needed basis has resulted in improved and timely medical services are care being provided to the inmate population.

ACCESS TO AND LACK OF PROGRAMMING

Many inmates reported concerns with the lack of access to programming in general. They also relayed concerns with the number of available programs, especially for inmates serving extended sentences. Several staff stated that increasing the number of programs is the change that they would make if they were the Warden, relaying that occupying inmates' time is necessary for calm institutional operations.

SOCF Response:

Due to staff reductions within Unit Management surrounding the DRC Reorganization Plan effective 6/21/2008, unit programming was reduced; nevertheless, unit programming continues to be offered in compliance with the 02-REN-01 policy. The Vocational Masonry Teacher, Vocational Carpentry Teacher (8/3/2008), and (1) Teacher ABE/GED (2/19/2009) positions were abolished due to budget constraints; however, (2) Apprenticeship Programs were initiated as a result.

CULTURAL COMPETENCY TRAINING

Many inmates stated that the lack of minority staff negatively affected inmate-staff interactions. Inmates relayed that they would like staff to participate in training to improve communication

across the cultural divide. Similarly, several staff relayed that learning how to communicate with the inmate population was the biggest struggle that new recruits face. Inmates could also benefit from cultural competency training; not only are racial divides well known as a source of conflict in the inmate population, but inmates of multiple racial groups were heard using racial slurs toward an Asian officer.

SOCF response:

This institution will utilize In-service training to educate staff regarding Cultural Diversity as well as proper Interpersonal Relationships; in addition to implementing inmate programming surrounding this area.

POINTS OF PRIDE

OVERALL IMPROVEMENT

Compared to past CIIC inspections and to the reputation of the Southern Ohio Correctional Facility, the facility is moving in a positive direction. Not only was the subjective on-site evaluation more positive than in the past, but several key indicators also show positive movement. For example, the number of inmate on inmate assaults decreased from a high of 347 in 2008 to 281 from April 2010 to April 2011. Similarly, the number of uses of force decreased from a high of 907 in 2009 to 652 in 2010. While CIIC believes that continued improvement could bring the numbers even lower, SOCF staff are to be praised for the progress thus far.

STAFF SAFETY

Many inmates and staff rated staff safety as high. Of the 27 staff interviewed, 18 rated staff safety between a seven and a ten, with the average of the staff ratings of staff safety being 7.6. Similarly, the average of the inmate ratings for staff safety was 8.4. The high safety rating was attributed to staff responsiveness to incidents, as well as high staffing levels and the limited movement of inmates. Staff also attributed staff safety to tools such as PR-24s and OC spray, which prevent them from having to wrestle with inmates during incidents.

INSTITUTIONAL CLEANLINESS

Overall, the institution was very clean. Floors were clearly washed and swept, there was no trash on the range, and inmate cells were generally orderly. In particular, the stainless steel showers in L block appeared very clean. One exception to the overall cleanliness was the condition of cells in J2, which appeared filthy, as well as the showers in J block generally.

FOOD SERVICES

The food services area appeared to be very clean, neat and organized. There were no reported equipment deficiencies. Inmate workers were observed being productive and engaged in their work. The meal was sampled by CIIC staff. It was noted to be appetizing, and the portions were of appropriate size.

STAFF MUTUAL SUPPORT

A consistent theme throughout the individual staff interviews was the sense of being supported by administrative and peer staff. Staff routinely praised Warden Morgan, stating that Warden Morgan was “one of them” and therefore understood the challenges of SOCF. Compared to interviews conducted at other facilities, staff often struggled to think of any changes that they would make to facility operations. Staff also stated that the experienced staff are always willing to help out new recruits and answer questions.

SECTION III. CIIC STATUTORY REQUIREMENTS

A. ATTEND A GENERAL MEAL PERIOD

Pursuant to Section 103.73 of the Ohio Revised Code, a general meal period was attended on the day of the Inspection. The menu consisted of chicken and onions served with tortillas, white beans, Spanish rice, steamed broccoli, and a banana. CIIC rates this meal as average. Inmates also rated this meal as average.

B. ATTEND AN EDUCATIONAL OR REHABILITATIVE PROGRAM

Ohio Revised Code Section 103.73 also requires attendance at an educational or rehabilitative program. According to staff, programming is available to all inmates. On day two of the inspection, CIIC staff observed the "ADAPT" program and "Thinking for a Change."

The ADAPT program is a cognitive behavioral treatment program for inmates with a history of substance abuse and addiction. On the day of the inspection, there were 13 inmates participating in group discussion facilitated by one instructor. Instructors were very engaged with the inmates, who themselves appeared enthusiastic.

The CIIC inspection team also observed the program "Thinking for a Change." This program is also a cognitive behavioral treatment program directed at guiding participants toward addressing thinking errors. Thinking for a Change includes cognitive restructuring, social skills development, and development of problem solving skills. The program was developed for the National Institute of Corrections and introduced in 1997. The program is delivered to small groups in 22 lessons based on a curriculum that uses a systemic approach to identify thinking, beliefs, attitudes, and values, interspersed with targeted critical social skills. After the cognitive restructuring foundation is laid in the first part of the program, the client learns problem solving techniques, enabling application of the skills to life situations. The program culminates in an individual assessment of skill use. Using a structured learning checklist, participants self-report their use of 50 social skills, using a Likertⁱⁱ type scale. Beyond assessments that are incorporated within the curriculum and within lessons, there are efforts to collect program evaluation data to determine the effectiveness and efficiency of the program, which is in keeping with the Ohio Department of Rehabilitation and Correction's goal of using evidence-based programming.

C. EVALUATE THE INMATE GRIEVANCE PROCEDURE

Pursuant to Section 103.73 of the Ohio Revised Code, the CIIC is required to evaluate the inmate grievance procedure at each state correctional institution.

The inmate grievance procedure is a three step administrative process, established in DRC Administrative Rule 5120-9-31. The grievance procedure allows for investigation and nonviolent resolution of inmate concerns. The first step is an informal complaint resolution, which the inmate submits to the supervisor of the staff person or department responsible for the

ⁱⁱ Likert scales are psychometric scales commonly used in survey research where the respondent rates a statement, typically using a five-level system ranging from 'strongly disagree' to 'strongly agree.'

complaint. The second step is a notification of grievance, submitted to the Inspector. The final step is an appeal of the Inspector's disposition to the Chief Inspector in DRC Central Office.

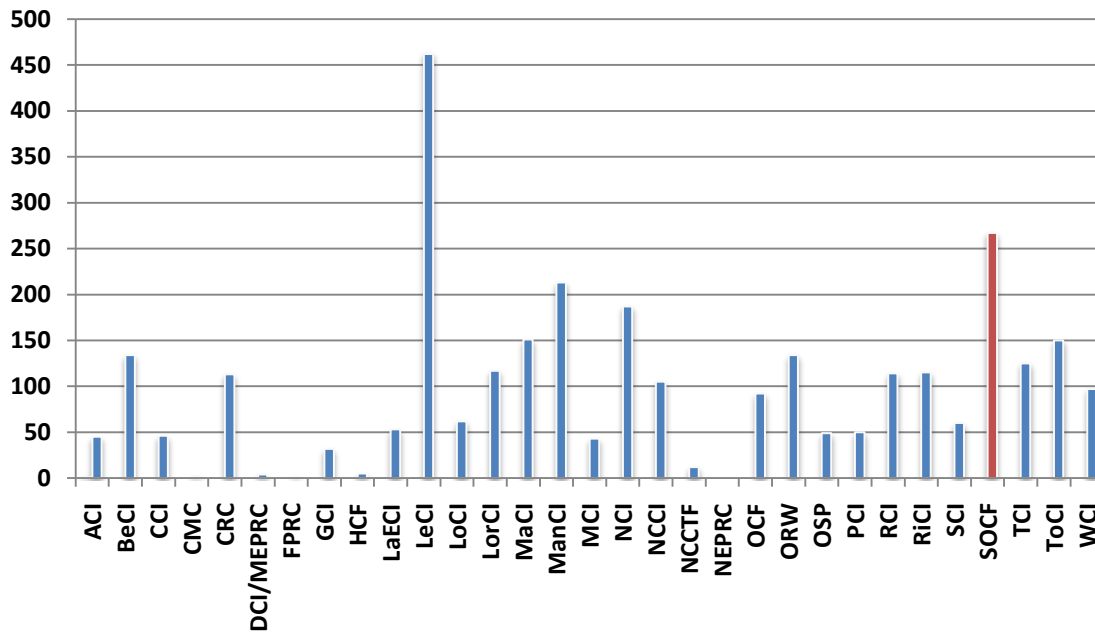
The Inspector's Activity Report for April 4, 2010 through April 4, 2011 is provided in Table 3 of the Appendix. According to the Inspector's report there were 438 grievances filed during that time period. The report also indicates that there were 2,995 informal complaints received during that period as well. Of the 452 grievances completed, 411 were denied, three were withdrawn by the inmate, and 38 were granted. The top three categories with the most grievances were **Health Care** (118), **Supervision** (91) and **Personal Property** (88).

SECTION IV. KEY STATISTICS

A. USE OF FORCE

There were 267 use of force incidents from September 2010 through February 2011. There were 178 incidents involving black inmates, 88 involving white inmates, and one incident involving an inmate of another race. Tables 4 and 5 of the Appendix provide an explanation of use of force and a breakdown of the use of force incidents from September 2010 through February 2011.

Chart 4
Use of Force by Institution
September 2010 to February 2011

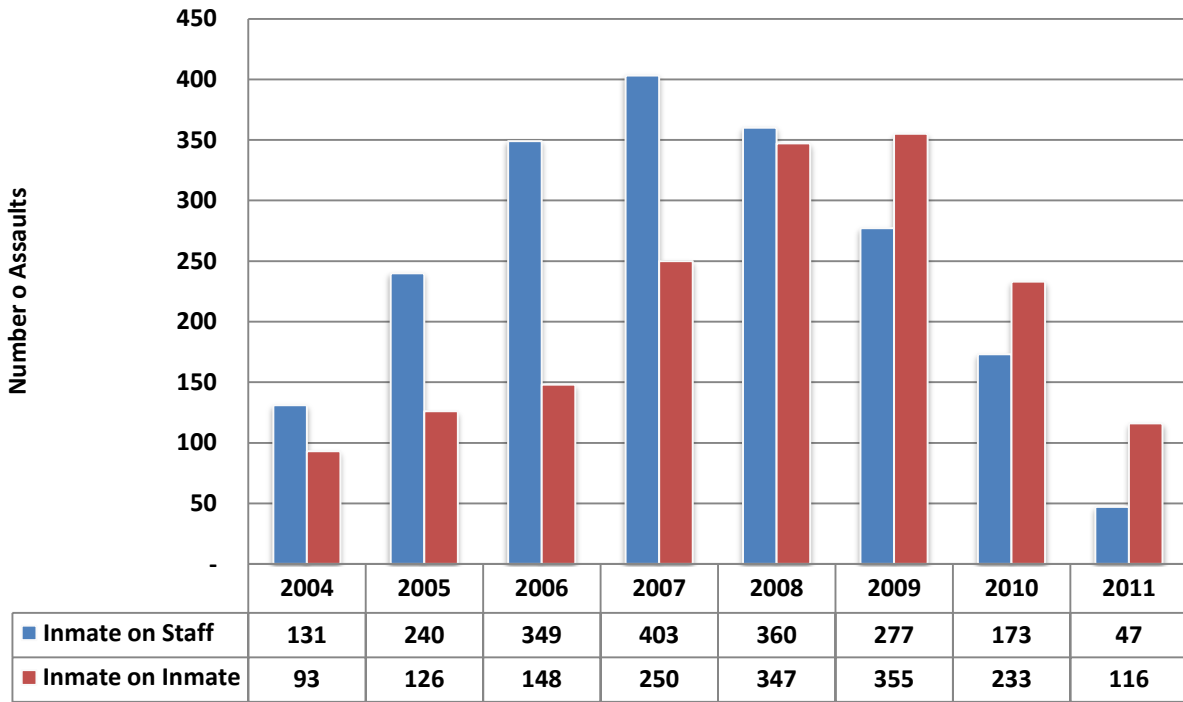


According to DRC reports on use of force incidents from 2008 through 2010, there were 2,121 incidents where staff used force on inmates. The majority of use of force incidents are not referred to committee for further investigation. Of that total, 394 (19 percent) were sent to a use of force committee for review and 1,727 (81 percent) were not. No information was provided on the number of incidents ruled as inappropriate uses of force.

B. ASSAULTS

Documentation from DRC reports from April 4, 2010 through April 4, 2011 show there were 281 reported inmate on inmate assaults where weapons were used 302 times.ⁱⁱⁱ The institution also had 182 inmate on staff assaults where weapons were used 197 times.^{iv} Of the 182 inmate on staff assaults, 135 (74 percent) were harassment assaults,^v 43 (24 percent) were physical assaults, and four assaults (2 percent) were termed inappropriate physical contact. Tables 6 and 7 in the appendix provide a breakdown of the type of assault for the total number of assaults from April 2010 through April 2011.

**Chart 5
Total Assaults
2004 through April 4, 2011**



ⁱⁱⁱ A weapon can be classified as anything from a fist or hand, a liquid, such as human waste, a physical object, such as a battery or a knife, and food. Each incident of assault that occurs can involve the use of multiple weapons.

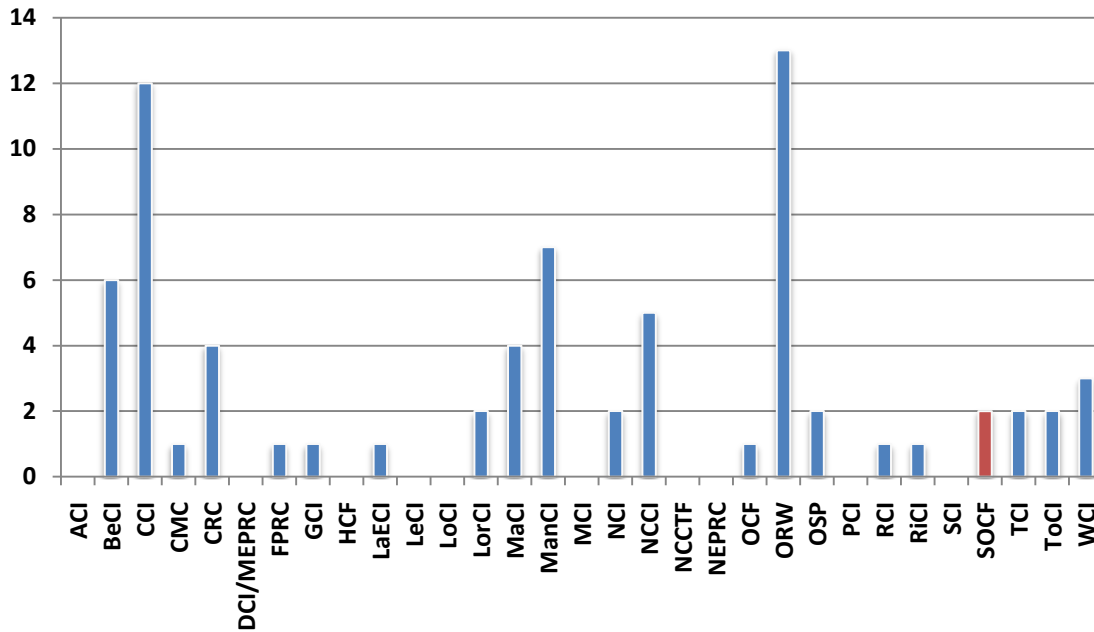
^{iv} There are single incidents of assaults on staff where multiple weapons are used by offenders.

^v Harassment assault is defined by the DRC as “Throwing, or otherwise causing a bodily substance to come into contact with another, or throwing any other liquid or material on or at another that does not result in any physical injury to the victim.”

C. SUICIDES AND SUICIDE ATTEMPTS

The Ohio Department of Rehabilitation and Correction reported 73 attempted suicides from February 2010 through January 2011. The Southern Ohio Correctional Facility (SOCF) experienced one suicide and two suicide attempts during this period. Table 8 of the Appendix outlines the number of suicide attempts per month for each institution.

**Chart 6
Suicide Attempts by Institution
February 2010 to January 2011**



D. INVESTIGATOR DATA

The role of the Institutional Investigator is an essential component to ensuring the safety and security of the institution. Investigators are generally focused on investigating conveyance of illegal substances, assaults, or issues regarding the professional misconduct of staff members. Investigator-initiated investigations do not constitute the total number of investigations conducted regarding contraband or any other matter in the institution, which may be initiated by other staff persons. From March 2010 through February 2011, the Investigator initiated 97 investigations. The majority of the activity involved performing background investigations on potential new hires, cases labeled “other,” staff misconduct, and drugs intercepted through the mail. Table 9 in the Appendix provides a breakdown of cases by type.

The investigator’s position at this facility is of great importance due to its high security level and the large number of inmates who have a propensity for misconduct and violence. Currently there is only one investigator at SOCF, and a second position has been vacant for nearly a year. Staff reported that they are currently in the process of trying to fill the vacancy.

The investigator stated he spends a majority of his time investigating cases of tobacco conveyance. While not a felony, it is still prohibited in all state correctional facilities. It was reported that the majority of those responsible for conveyance are staff who are lured by the attraction of easy money for a substance that is still considered socially acceptable by society. In cases where staff is caught, their employment is terminated. The prohibition of tobacco is wildly unpopular among inmates and many staff. It was reportedly banned because treating smoking related diseases in the inmate population is too costly. Proponents of the ban say that the reduction in costs associated with treating smoking related diseases outweighs the lost revenues from the sale of tobacco in commissaries.

SECTION V. OPERATIONS

A. MEDICAL SERVICES

During the inspection a walkthrough of the infirmary was conducted, which is divided between two floors. The upper floor has 20 cells, half for medical needs and half for mental health needs. At the time the walkthrough there were six inmates housed in the infirmary.

The composition of medical staff consist of: one health care administrator, five licensed practical nurses, 10 RN-1s, two RN-2s, a diet-technician, a pharmacy technician, a phlebotomist, three health information technicians, one full time nurse practitioner, one full-time physician and one part-time physician. The dental staff is contracted through Mid-America Dental who provides one dentist, one hygienist, and two chair side assistants. The institution also contracts a podiatrist, an optometrist, and one radiology technician.

According to monthly medical services reports provided by the institution, from September 2010 through February 2011, nurses performed a total of 2,697 sick calls and assessments. Doctors performed a total of 1,922 sick calls.

During the same time period, 32 inmates were sent to a local emergency room and 13 were sent to OSU Medical Center. Medical staff treated a total of 1,121 inmate emergencies on site. There was 561 staff members treated onsite.

The Dentist conducted 1,591 scheduled appointments and 13 emergency visits, for a total of 1,604 appointments. Staff reported that there is a two month wait for non-emergency oral care needs.

Specialty care at The Southern Ohio Correctional Facility (SOCF) includes both podiatry and optometry. A total of 197 inmates were seen by the Optometrist. A total of 104 inmates were seen by the Podiatrist.

The Pharmacy filled a total of 18,558 prescriptions from September 2010 through February 2011.

There were 1,359 inmates were tested for tuberculosis during the same six month period. As of the date of the inspection, there are no known HIV positive inmates at SOCF.

Table 10 of the Appendix provides more information about the medical services at The Southern Ohio Correctional Facility (SOCF).

B. MENTAL HEALTH SERVICES

The SOCF mental health staff consists of one psychology supervisor, one mental health administrator, one psychiatrist, one psychologist, 12 registered nurses, four social workers, three psych assistants, and four activity therapists.

There were 2,379 new mental health prescriptions issued from September 2010 through February 2011.

There were 456 inmates on the mental health caseload on the day of the inspection, which is greater than the average caseload at other DRC institutions. Of those inmates, 215 were listed as Seriously Mentally Ill (SMI), which is greater than the average institutional SMI population at other institutions.

There is a Residential Treatment Unit (RTU) at SOCF. This is a secure unit focused on providing treatment to mentally ill offenders housed at the institution. The environment provides structured clinical programs to stabilize the mentally ill offenders who are in crisis and eventually prepare them to return to general population.

The atmosphere of the RTU on the day of the inspection was calm. Living and showering areas were observed to be clean. One of the greatest challenges for staff who work with this special population is reinforcing good hygiene habits. Staff reported that inmates are permitted to clean their cells each day or more frequently if they want.

The RTU inmates operate a small green house for therapeutic programming purposes. They start seedlings that are later transferred to a prison farm when mature. There are five inmates who work in the green house at a time. Inmates from the unit are rotated so they all have an opportunity to participate.

Table 11 of the Appendix gives a snapshot of the mental health caseload per institution, while Table 12 provides information about the amount of SMI inmates per institution.

C. FOOD SERVICES

As of 2010, the average cost per meal at SOCF is \$1.13. The average cost per meal for all institutions is \$1.00 per meal. The conditions of the food preparation area appeared to be clean, neat and organized. The coolers, freezers, and food storage areas were also observed to be orderly and clean. Stored food was wrapped, dated, and kept off of the ground. There were no reported equipment deficiencies.

There are 240 inmates assigned to work in food services. No more than 44 inmates work in food service at one time. On the day of the inspection inmate workers were observed being productive and engaged in their work. Staff reported that they do not utilize an incentive program where inmates can earn a higher wage per hour for better performance.

Inmate workers are trained to abide by hygienic practices. CIIC Inspectors observed them wearing gloves and hairnets while handling food. The inmates were also observed cleaning the equipment that was used in the preparation of the meal. All equipment not in use appeared to be clean. The chemicals used to clean are stored in a secure area. Staff reported there are no pest issues and pest control is conducted every Wednesday. On the trash dock there were no odors, loose garbage, or insects.

Most concerns regarding the meals that inmates relayed were in regard to the portion sizes. Staff confirmed that this is the biggest concern communicated by inmates regarding food services. Several inmates also relayed concerns about the weekend brunch. They stated that nearly 20 hours pass between Friday supper and the first brunch meal served on Saturday.

D. HOUSING UNITS

The Southern Ohio Correctional Facility (SOCF) has 20 housing units divided among three separate housing blocks: J, K, and L. There is additional housing if needed in D block, which contains the infirmary and emergency housing. Each housing block is designated to hold inmates classified as privilege level 4B or 4A.

When an inmate is classified to SOCF, he is assigned to privilege level 4B. It is a more restrictive level, requiring that inmates be locked down approximately 23 hours per day. After six months in 4B status, inmates receive a privilege level review. Based on their conduct during this period the inmate may be reduced to privilege level 4A, which is also referred to as general population at SOCF. It is a less restrictive privilege level, providing inmates with greater liberties and out of cell time. These inmates are frequently used in prison work assignments, such as food services, porters, or central laundry.

The majority of the housing units have the capacity to hold 79 to 80 inmates, with the exception of J-1 and the infirmary, both which holds 20 inmates.

L-Block

The L-block units house inmates classified as level 4A. The living quarters were noted to be exceptionally clean and quiet during the inspection. Shower facilities were also noted to be clean, aside from some mildew. However, a few inmates in two housing units alleged that there were “maggots” coming up through the shower drains. There were few reported maintenance issues regarding sinks and toilets other than minor leaks or a clogged drain. Inmates are permitted to clean their cells daily, although some inmates stated that the strength of the chemicals provided is insufficient.

Inmates communicated their personal wash tubs used to wash their laundry had been confiscated. Staff reported that new ACA standards required the tubs to be sanitized. Staff relayed that there is no way to accurately verify that inmates sanitize the wash tubs and therefore they had to be removed from their cells.

K-Block

There are eight housing units in K-block. The majority of inmates housed in K-block are classified as 4B, although there are two housing units that houses inmates classified as 4A. Most of the living areas in these units were clean. However, many of the cells were noted to be cluttered with inmate property. Like the units in L-Block, inmates are permitted to clean at least once a week if not more frequently. The shower facilities were also noted to be clean with the exception from mildew and the smell of urine in one. There were few deficiencies noted

regarding the toilets and sinks aside from a toilet that was purposely clogged. This caused the toilet in the neighboring cell to malfunction.

Inmates in K block relayed concerns regarding various issues, the most serious of which were allegations of staff using force on inmates. Inmates also relayed concerns about fears of retaliation by staff for voicing complaints and using the inmate grievance procedure. Other concerns relayed included the poor reception of televisions, theft of personal laundry by laundry porters, staff refusing to exchange dirty linen, the smoking ban, lack of programming, and the unresponsiveness of staff to address inmate needs.

J-Block

J-Block is a mixture of 4B housing and segregation units. Two housing units are used to house inmates assigned to 4B and two are used to house inmates in some level of disciplinary status (security control, disciplinary control, local control).

J-3 and J-4 units house inmates assigned to 4B. The units were calm on the day of the inspection, but large televisions mounted on the walls opposite to the cells were playing soap operas at a loud volume. Other inmates engaged in conversations between cells by shouting back and forth to one another. Many of the cells were observed to be clean, although some cells were cluttered with inmate property and a few needed a more thorough cleaning. However, other cells looked as if they were in need of a more thorough cleaning. The showers in J-3 are reportedly cleaned daily by porters, but on the day of the inspection there was noticeable soap scum and they appeared to be in need of additional cleaning.

Segregation Units: J-1 and J-2

The J-1 housing unit houses inmates assigned to local control. The count in J-1 was 17. The unit was clean and the temperature was comfortable. Overall the unit was quiet, but there was notable tension between inmates and staff. Inmates relayed concerns about staff using excessive force and being denied their legal property. Some inmates refused to speak with CIIC inspectors out of concern that staff would retaliate against them later.

Inmates assigned to this status are locked down 23 hours a day and receive one hour of recreation five times each week. They are supposed to have access to their legal and religious materials, as well as a limited number of books. They cannot use the telephone or have a television while in this status.

The J-2 housing unit contains inmates assigned to security control and disciplinary control. On the day of the inspection there were 13 inmates assigned to security control and 37 inmates assigned to disciplinary control. Upon arrival, the unit was calm, but it became very noisy as a few inmates began screaming and causing disruption. A review of the SOCF active caseload reported provided on the date of the inspection revealed that there were 22 inmates (44 percent) of the segregation population were on the mental health caseload.

There were 370 incidents where staff used force on inmates in J-2 from 2008 through 2010. Of those incidents 62 (17 percent) were assigned to a use of force committee for further investigation and 308 incidents (83 percent) were not. Incidents that resulted in a use of force were more frequent in J-2 than any other housing unit during this three year period. The second housing unit with the closest number of similar incidents was the K-2 housing unit with 212 incidents. K-2 houses inmates assigned to 4B status. In K-2 during the same period, 39 (18 percent) incidents of force were referred to a committee for investigation. There were 173 incidents (82 percent) in K-2 where force was used but not referred to a committee for further investigation.

In J-2, lights cannot be turned off completely in the cells, only dimmed. The cells were poorly lit due to many inmates who covered their cell lights. This made it nearly impossible for staff to see into the cell through the small windows. According to staff, this is an issue that they are constantly addressing with inmates. The cells that were observed were sparse and appeared to be in need of cleaning and painting. Staff reported that inmates are provided cleaning supplies once a week. The shower facilities appeared clean and are reportedly sanitized daily.

Inmates are provided access to legal and library services, as well as religious services, by kiting the staff. The infirmary staff makes rounds each day to address inmate medical needs.

E. COMMISSARY

The commissary area was not included during the inspection. To order commissary items, the inmates must turn in their commissary sheet, which is a form indicating items they wish to purchase. From there, an inmate worker will fill the order, charges the inmate account and the order will be delivered to a location near the inmate's housing unit for pick up. Inmates assigned to 4B are permitted to spend \$70 twice each month. Inmates assigned to 4A are permitted to spend \$100 twice per month at the commissary and the profits are placed in the institution's Industrial and Entertainment (I and E) funds, which are reinvested back into the institution. All inmate property is supposed to fit within a 2.4 cubic foot storage box.

F. RECREATION

Each housing block has individual recreation areas. Inmates classified 4B and to segregation are supposed to receive five-one-hour recreation periods each week. Inmates classified as 4A receive seven-one and one-half hours each week. Staff makes a variety of activities available to inmates in general population, in segregation and those with disabilities despite being a high security prison. The conditions of each recreational area appeared to be in good condition. There are five to nine staff members that work in these areas. In the L and K block areas, there are up to five inmates assigned to work in recreation.

The recreation area for K and L blocks are large indoor gymnasiums with basketball courts, individual work out stations with pull-up and dip bars. The outdoor recreation facilities for these blocks include whiffle ball courts, a walking track, handball courts, flag football, basketball, soccer, and more pull up and dip stations. Inmates also have access to a music program, karaoke, movies, horticulture programs and MP3 kiosks. Segregation inmates are allowed recreation in

individual cages, with 72 total. The equipment in the cages consist of a pull up and dip bars as well as a bench for performing sit ups. Thirty-six of the cages are located outdoors and also include a basketball hoop.

SECTION VI. PROGRAMS

Inmate programming falls under several categories, which may include academic (secondary, post-secondary or college, GED/ABE or ABE), vocational, career-technical, community service, rehabilitative, recovery, or reentry. Quality of programming is considered an important issue for Ohio legislators, as demonstrated by the CIIC statutory obligation to include an educational or rehabilitative program as part of the inspection.

In recent years, however, access to programming has become a concern due to prison overcrowding resulting in lengthy waitlists. Lack of access to programs has serious consequences: it both impedes the reentry effort and results in inmates finding other, potentially less beneficial, ways to pass the time.

A. EDUCATIONAL/VOCATIONAL PROGRAMMING

According to the February 2011 monthly report, there were no inmates enrolled in the Literacy program and no inmates on the waitlist. The monthly report indicated that there were 23 inmates enrolled in ABE (Adult Basic and Literacy Education), with 128 inmates on the waitlist. There were 15 inmates enrolled in the Pre-GED program, with 61 inmates on the waitlist and 44 inmates enrolled in the GED program, with 32 inmates on the waitlist.

Overall, there were 82 inmates enrolled in academic/GED preparatory programs and 221 inmates on the waitlist. Most of the inmates on the waitlist, none of whom have a GED or high school diploma, will not receive a GED before release. For a full breakdown of inmate enrollment in educational and vocational programs for February 2011, see Table 15 of the Appendix.

B. REENTRY/UNIT PROGRAMS

Reentry programming focuses on skill development in dealing with issues, such as conflict and confrontation or employment skills. The reentry programs at SOCF include: Money Smart, Victim Awareness, Inside Out Dad, Responsible Family Life Skills, Alcohol and Drug Abuse Prevention and Treatment (ADAPT) and the Alcohol and Drug Education Program. The "SAMI" (Substance Abuse/Mentally Ill) program, as well as the program titled "Cognitive Behavioral Treatment for Borderline Personality and for those Who Self Injure" programs are seeking approval for reentry certification.

C. RECOVERY SERVICES

Recovery services are designed to address an individual's addiction to alcohol and drugs, as well as mental illnesses. Several of these programs also are included in reentry programming. The programs use cognitive behavioral therapy, basic education, peer support, and other forms of treatment therapy to assist inmates with recovery from their drug or alcohol addictions. Upon successful completion of these programs inmates are eligible for earned credit. Programs include ADAPT, Aftercare-Continuing Care, Alcohol and Drug Education Program, Narcotics and or Alcoholics Anonymous, SAMI (Substance Abuse/Mentally Ill) program, as well as CBOT for Borderline Personality and those Who Self Injure.

D. RELIGIOUS PROGRAMS

According to DRC policy 72-REG-02, the DRC “seeks to meet all inmates’ religious needs within the unique parameters of the correctional setting.” SOCF offers religious programming for the following faith groups: Protestants, Jehovah’s Witnesses, Catholics, and Jumma/Taleem. There are also services for Kairos, bible study groups, and even choir practice. Furthermore, faith-based volunteers often come into the institution to provide faith-based studies.

Per House Bill 113 of the 127th General Assembly, CIIC monitors the DRC’s use of volunteers. According to institutional staff, The Southern Ohio Correctional Facility (SOCF) has up to several hundred approved volunteers that come into the institution on a monthly basis to provide faith-based activities for inmates.

E. LIBRARY SERVICES

Each institution has a library and a law library. Access to both remains a primary issue of concern for CIIC, as numerous letters have indicated inmates’ dissatisfaction with the number of hours allowed, particularly when inmates wish to perform legal research.

The inspection of the library found it to be clean and organized. A variety of materials are also available to inmates in order to ensure that a range of interests are represented. There are a number of different newspapers and periodicals for inmates to read. There are religious interests sections and very few selections that are dedicated to minority literature. Many of the books have been donated by the community and very few are purchased.

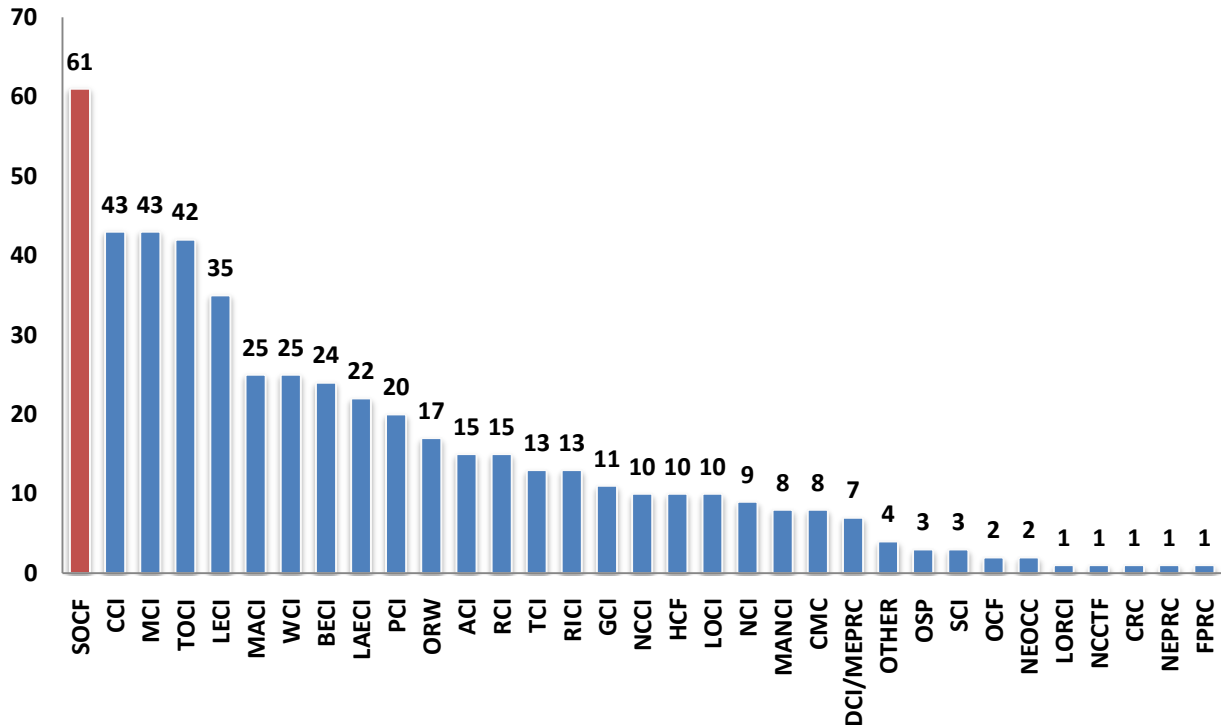
According to staff, each unit receives approximately five hours of library time each week on a rotating schedule of weekends or evenings, with no more than 20 inmates in the library at one time. Library services are also provided to inmates in segregation.

There were six computers and one word processor available for inmates to utilize for completion of their legal work. In regard to legal reference materials, there are no longer hard copies of legal reference materials kept in the law library. All legal materials are available online through Westlaw. A staff paralegal is available to assist inmates if they need further assistance with legal services or access to commonly used legal documents.

SECTION VI. CIIC CONTACTS AND CONCERNS

From January 1, 2011 through April 1, 2011, CIIC received 61 contacts from, or regarding, inmates at the The Southern Ohio Correctional Facility (SOCF), who reported 293 concerns. The institution ranked first among all DRC institutions for total number of contacts.

**Chart 7
CIIC Contacts with Institutional Breakdown (DRC)**



The top five concerns reported to CIIC regarding SOCF were: Supervision, the Inmate Grievance Procedure, Health Care, Inmate Relations, and Staff Accountability. Tables 18 and 19 of the Appendix provide information about the concerns relayed to CIIC regarding The Southern Ohio Correctional Facility (SOCF).

Chart 8
Top 10 Reported Concerns to CIIC (SOCF)
January 1, 2011 through April 1, 2011

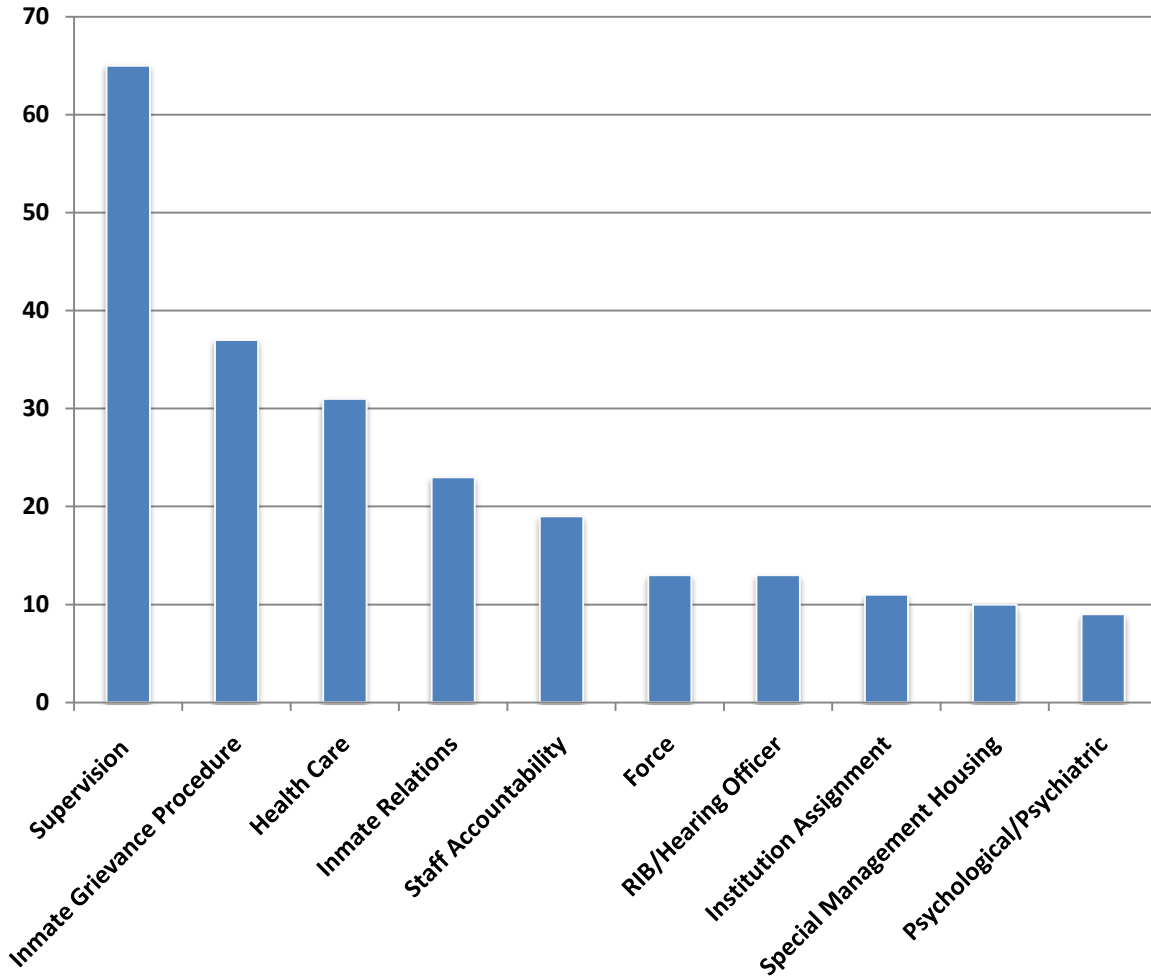
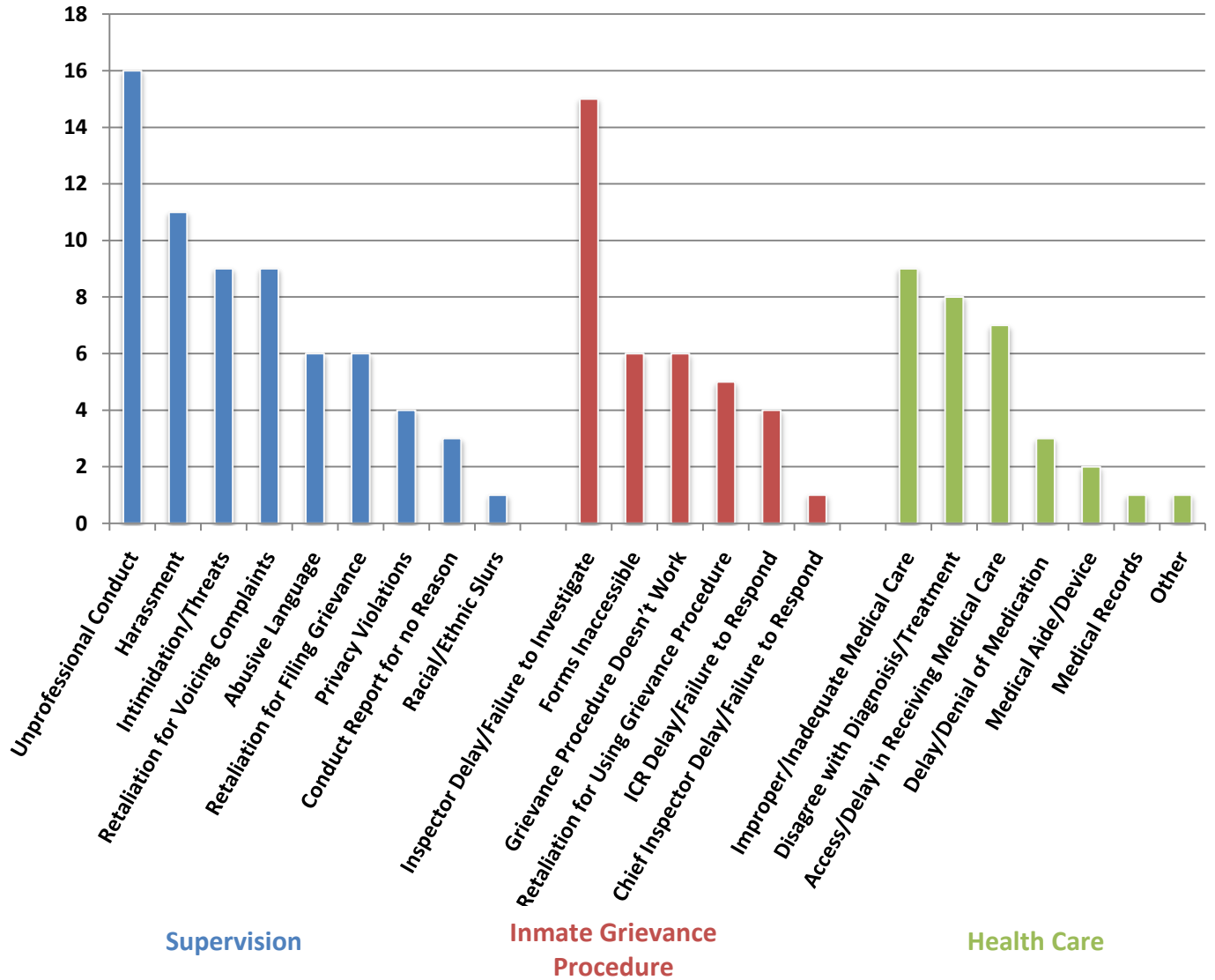


Chart 9
Breakdown of Top Three Reported Concerns
January 1, 2011 through April 1, 2011



A. INQUIRIES

Written inquiries are conducted for the most serious concerns communicated to CIIC, such as personal safety, medical, and use of force. CIIC conducted seven written regarding inmates at The Southern Ohio Correctional Facility (SOCF) as of the writing of this report. The inquiries were in regard to inadequate medical care, excessive force, personal safety concerns due to security threat groups, staff misconduct and harassment, tampering with food, pain medication, and suicidal ideations.

SECTION VII. APPENDIX

A. DRC ACTION PLAN

CIIC Observation - Use of Force

Issue	<p>Problem noted by CIIC – USE OF FORCE <i>Numerous inmates alleged that line staff, particularly staff on second shift, are quick to use force and do not attempt to utilize verbal methods to deescalate situations. During the inspection, 80 inmates were asked to rate inmate safety on a scale of one to ten, with ten meaning “very safe.” The average of the inmate ratings of inmate safety was 5.8; invariably, low inmate ratings of inmate safety were attributed to fear of staff, rather than fear of other inmates. Inmates relayed that if staff would attempt to speak first instead of using force, there would be fewer incidents of violence at the institution. In individual interviews, staff relayed that the staff who have problems generally bring those problems onto themselves by not knowing how to communicate with inmates.</i></p>	
	<p>Tasks</p> <ol style="list-style-type: none"> 1. Increase Supervision during mass movement in high profile areas such as Metal Detector, Recreation and Inmate Dining Room. 2. Develop and utilize “hands on approach” Use of Force training during In-service training surrounding scenario/coaching methods to train staff providing a clear understanding of policy. 3. Upon review of all Use of Force packets; the Deputy Warden of Operations will determine that all (4) elements of a use of force is present with emphasis on Preclusion and conclude whether a “coaching” session or disciplinary action is appropriate. 	<p>Person Responsible</p> <ol style="list-style-type: none"> 1. Major/Shift Captains 2. Administrative Captain 3. Deputy Warden of Operations
	<p>Comments: <i>The current year to date (4/25/2011) report reflects a total of 182 Use of Force incidents with 38 of those being referred to a Use of Force Committee for further investigation.</i></p>	

CIIC Observation - Inmate Grievance Procedure

Issue	<p>Problem noted by CIIC - INMATE GRIEVANCE PROCEDURE <i>Many inmates relayed concerns that they would be retaliated against if they used the inmate grievance procedure. Others stated that informal complaints are never made available to them upon request from staff. During the inspection and repeatedly in letters to CIIC, inmates at the Southern Ohio Correctional Facility questioned the impartiality of both the Inspector in investigating grievances and staff supervisors in responding to informal complaints.</i></p>	
	<p>Tasks</p> <ol style="list-style-type: none"> 1. Place forms in an easy access areas, i.e. kites and Informal Complaints. 2. Post flyers throughout the facility, as well as utilize the Inmate Character Generator as resources in educating and communicating the informal complaint and grievance process to the inmate population. 3. All offenders are informed of the inmate grievance process and information regarding appropriate supervision at reception. Offenders will then be afforded a review of this information by the receiving institution upon transfer to another facility. All offenders will receive the same manner of review for the duration of incarceration as outlined in policy 52-RCP-10 (Inmate Orientation). All reviews are documented on DRC4141. 	<p>Person Responsible</p> <ol style="list-style-type: none"> 1. Inspector/Unit Staff 2. Inspector 3. Inspector/Unit Staff
<p>Comments: <i>Since April 2010 through April 2011, the SOCF Inspector has received 3,243 kites, 3,019 Informal Complaints, and 465 Grievances of which 39 grievances were granted.</i></p>		

CIIC Observation - Access to and Lack of Programming

<p>Issue</p>	<p>Problem noted by CIIC - ACCESS TO AND LACK OF PROGRAMMING <i>Many inmates reported concerns with the lack of access to programming in general. They also relayed concerns with the number of available programs, especially for inmates serving extended sentences. Several staff stated that increasing the number of programs is the change that they would make if they were the Warden, relaying that occupying inmates' time is necessary for calm institutional operations.</i></p>	
	<p>Tasks</p> <ol style="list-style-type: none"> 1. Continue to follow the 02-REN-01 policy which states, in Section E Reentry Program Enrollment and Monitoring for RAP and ORAS. (1) With the exception of statutory requirements, program providers shall ensure that inmate enrollment reentry programs is prioritized according to the Case Plan and/or RAP in the following order: <ol style="list-style-type: none"> a. Inmates with 2 years or less remaining to serve who scored intensive on the RAP will be prioritized for programs that address domains with considerable need. Inmates with 2 years or less remaining to serve at their parent institution and with high or very high risk on the PIT. b. Inmates with moderate risk levels and high level of need in ORAS or considerable need in RAP should be enrolled only when there are too few high/very high risk inmates available to participate in the program and who have a high need in the particular domain for the program. 2. Expand on cognitive behavioral programming to include but not limited to After Care CBT, Adapt CBT, SAMI CBT, Depression Management, Self Injury & Addiction CBT, Anger Management, Thinking for a Change, Turning Point, Victim Awareness, etc. 	<p>Person Responsible</p> <ol style="list-style-type: none"> 1. UMA Education Supvr. Recovery Supvr. MHA 2. UMA Recovery Supvr. MHA
<p>Comments: <i>The Director's DRC Budget Impact outlines the partial implementation of Unit Management at higher risk facilities; this reinstatement of positions will directly impact the number of programs being conducted at this facility.</i></p>		

CIIC Observation - Delay in Receiving Medical Care

Issue	<p>Problem noted by CIIC - DELAYS IN RECEIVING MEDICAL CARE <i>Inmates stated that they have to wait for extended periods of time to receive treatment from the institutional physician. Other inmates stated concerns about changes in medication.</i></p>	
	<p>Tasks</p> <ol style="list-style-type: none"> 1. As of April 7, 2011, initiated full-time contract physician; in addition to the current full time Nurse Practitioner position. 2. Continue to schedule part-time physician on an as needed basis. 3. Continue to work closely with the Commissary Department in educating/notifying inmates of the new drug formulary (Directive Dated 2/4/2011) utilizing bulletin postings in common areas and posting on Inmate Character Generator. 4. Continue to provide patient education regarding medication use. 	<p>Person Responsible</p> <ol style="list-style-type: none"> 1. HCA 2. HCA 3. HCA Commissary Supervisor 4. QIC
	<p>Comments: SOCF currently does not have a backlog regarding Doctor Sick Call.</p>	

CIIC Observation - Cultural Competency Training

<p>Issue</p>	<p>Problem noted by CIIC - CULTURAL COMPETENCY TRAINING <i>Many inmates stated that the lack of minority staff negatively affected inmate-staff interactions. Inmates relayed that they would like staff to participate in training to improve communication across the cultural divide. Similarly, several staff relayed that learning how to communicate with the inmate population was the biggest struggle that new recruits face. Inmates could also benefit from cultural competency training; not only are racial divides well known as a source of conflict in the inmate population, but inmates of multiple racial groups were heard using racial slurs toward an Asian officer.</i></p>	
	<p>Tasks</p> <ol style="list-style-type: none"> 1. <i>More emphasis on Inter-Personal Communication Skills and Cultural Diversity during In-Service training.</i> 2. <i>One on one discussion with officers assigned to those high profile posts on the importance of communication with the offenders, remaining professional at all times and the Administration's expectations.</i> 3. <i>Encourage and/or require staff to participate in those courses offered by CTA that fall within the Communications' Module to include but not limited to, Correctional Communications, Interpersonal Relationships, and ABC's of a Multi-Generational Workplace.</i> 4. <i>Purchase video programming relating to Cultural Diversity in a prison setting and develop an ongoing schedule to provide access to such programming by utilizing the inmate character generator.</i> 	<p>Person Responsible</p> <ol style="list-style-type: none"> 1. <i>In-Service Instructors</i> 2. <i>Shift Captain</i> 3. <i>Warden</i> 4. <i>UMA</i>
<p>Comments: <i>Request of Purchase being compiled to obtain programming materials.</i></p>		

B. DATA TABLES

Institution	Rated Capacity	Count as of April 4, 2011	Percent of Capacity
LorCI	756	1,572	208%
LeCI	1,481	2,815	190%
CRC	900	1,678	186%
CCI	1,673	2,966	177%
WCI	807	1,372	170%
GCI	939	1,527	163%
ManCI	1,536	2,478	161%
ACI	844	1,353	160%
ORW	1,641	2,563	156%
HCF	298	461	155%
MCI	1,666	2,551	153%
TCI	902	1,347	149%
BeCI	1,855	2,577	139%
RiCI	1,855	2,527	136%
RCI	1,643	2,228	136%
NCI	1,855	2,375	128%
NCCI	1,855	2,305	124%
SCI	1,358	1,549	114%
MaCI	2,167	2,385	110%
LoCI	2,290	2,387	104%
OCF	191	199	104%
NCCTF	660	676	102%
LaECI	1,498	1,495	100%
FPRC	480	478	100%
DCI	482	470	98%
ToCI	1,192	1,110	93%
MePRC	352	324	92%
SOCF	1,540	1,416	92%
PCI	2,465	2,122	86%
OSP	734	608	83%
NEPRC	640	519	81%
CMC	210	120	57%
Total	38,765	50,553	130%

Table 2. Staff Population Breakdown April 1, 2011	
Total Staff	711
Total Male Staff	595
White	561
Black	20
Other	14
Male Unknown Race	0
Total Female Staff	116
White	110
Black	5
Other	1
Female Unknown Race	0
Total CO	496
Total Male CO	451
White	427
Black	12
Other	12
Male CO Unknown Race	0
Total Female CO	45
White	44
Black	1
Other	0
Female CO Unknown Race	0

Table 3. Inspector's Report April 2010 through April 2011				
Grievance Numbers				
Total Number of Grievances Filed During Year	438			
Total Number of Inmates Who Filed Grievances During Year	222			
Highest Number of Grievances Filed by Single Inmate	14			
Grievances on Hand at Beginning of This Period	15			
Grievances Received during this period	437			
Total	452			
Grievances Completed During This Period	452			
Grievances on Hand at End of This Period	0			
Total	452			
ICR Summary				
Number of Informal Complaints Received	2,995			
Number of Informal Complaint Responses Received	2,789			
Number of Informal Complaint Responses Untimely	423			
Granted				
Granted	W	B	O	Total
Granted – Problem Corrected	14	15	0	29
Granted – Problem Noted, Correction Pending	5	2	0	7
Granted – Problem Noted, Report/Recommendation to the Warden	1	1	0	2
Subtotal Granted	20	18	0	38
Denied				
Denied – Insufficient Evidence to Support Claim	28	72	0	100
Denied – Staff Action Was Valid Exercise of Discretion	12	10	1	23
Denied – No Violation of Rule, Policy, or Law	79	124	2	205
Denied – Not within the Scope of the Grievance Procedure	1	8	0	9
Denied – False Claim	16	53	1	70
Denied – Failure to Use Informal Complaint Procedure	0	3	0	3
Denied – Not within Time Limits	0	1	0	1
Subtotal Denied	136	271	4	411
Withdrawn at Inmate's Request	0	3	0	3
Pending Disposition	0	0	0	0
TOTALS	156	292	4	452
Percent	34	65	1	100
Extensions				

CIIC Report: The Southern Ohio Correctional Facility (SOCF) 39

14-Day Extensions	1
28-Day Extensions	0
Total	1

Table 4. Use of Force with Racial Breakdown September 2010 through February 2011				
	Black	White	Other	Total
Use of Force Incidents	178	88	1	267
Percentage	67%	33%	<1%	100%
Action Taken on Use of Force Incidents:				
Assigned to Use of Force Committee for Investigation	59	27	0	86
Logged as "No Further Action Required"	119	61	1	181
Referred to the employee disciplinary process	0	0	0	0
Referred to the Chief Inspector	0	0	0	0
Number of investigations not completed within 30 days and extended				
	1	1	0	2
Number of extended investigations from previous month that were:				
Completed	5	2	0	7
Not Completed	6	6	0	12

Table 5. Use of Force with Racial and Monthly Breakdown September 2010 through February 2011				
	Black	White	Other	Total
September	34	13	0	47
October	27	14	0	41
November	30	19	0	49
December	18	15	0	33
January	40	15	0	55
February	29	12	1	42
Total	178	88	1	267

Staff is authorized to utilize force per DRC Policy 63-UOF-01 and Administrative Rule 5120-9-01, which lists six general circumstances when a staff member may use less than deadly force against an inmate or third person as follows:

1. Self-defense from physical attack or threat of physical harm.
2. Defense of another from physical attack or threat of physical attack.
3. When necessary to control or subdue an inmate who refuses to obey prison rules, regulations, or orders.
4. When necessary to stop an inmate from destroying property or engaging in a riot or other disturbance.
5. Prevention of an escape or apprehension of an escapee.
6. Controlling or subduing an inmate in order to stop or prevent self-inflicted harm.

Administrative Rule 5120-9-02 requires the Deputy Warden of Operations to review the use of force packet prepared on each use of force incident, and to determine if the type and amount of force was appropriate and reasonable for the circumstances, and if administrative rules, policies, and post orders were followed. The Warden reviews the submission and may refer any use of force incident to the two person use of force committee or to the Chief Inspector. The Warden must refer an incident to a use of force committee or the Chief Inspector. The Warden **must** refer an incident to a use of force committee or the Chief Inspector in the following instances:

- Factual circumstances are not described sufficiently.
- The incident involved serious physical harm.
- The incident was a significant disruption to normal operations.
- Weapons, PR-24 strikes or lethal munitions were used.

Table 6.		
Assaults: Inmate on Inmate		
April 4, 2010 to April 4, 2011		
Category of Assault	Number of Assaults	Percentage of Assaults
Physical Assault	76	27
Harassment Assault	205	73
Sexual Assault	0	0
Total	281	100%

Table 7.		
Assaults: Inmate on Staff		
April 4, 2010 to April 4, 2011		
Category of Assault	Number of Assaults	Percentage of Assaults
Physical Assault	43	24
Harassment Assault	135	74
Inappropriate Physical Contact	4	2
Total	182	100%

**Table 8.
Inmate Suicide Attempts
February 2010-January 2011**

	Feb	Mar	Apr	May	Jun	Jul	Aug	Sep	Oct	Nov	Dec	Jan	Total
ACI	0	0	0	0	0	0	0	0	0	0	0	0	0
BeCI	0	0	2	0	2	0	0	0	0	1	1	0	6
CCI	0	0	0	0	2	3	1	1	1	1	2	1	12
CMC	0	0	0	0	0	0	1	0	0	0	0	0	1
CRC	0	0	0	0	2	0	1	1	0	0	0	0	4
DCI	0	0	0	0	0	0	0	0	0	0	0	0	0
FPRC	0	0	0	1	0	0	0	0	0	0	0	0	1
GCI	0	1	0	0	0	0	0	0	0	0	0	0	1
HCF	0	0	0	0	0	0	0	0	0	0	0	0	0
LaECI	0	0	0	1	0	0	0	0	0	0	0	0	1
LeCI	0	0	0	0	0	0	0	0	0	0	0	0	0
LoCI	0	0	0	0	0	0	0	0	0	0	0	0	0
LorCI	0	0	0	0	1	0	0	1	0	0	0	0	2
MaCI	0	0	1	0	0	1	0	1	0	1	0	0	4
ManCI	1	2	0	0	0	0	0	0	1	1	1	1	7
MCI	0	0	0	0	0	0	0	0	0	0	0	0	0
NCCI	0	1	1	1	0	2	0	0	0	0	0	0	5
NCCTF	0	0	0	0	0	0	0	0	0	0	0	0	0
NCI	0	1	0	0	0	0	0	0	1	0	0	0	2
NEPRC	0	0	0	0	0	0	0	0	0	0	0	0	0
OCF	0	0	0	0	0	0	0	0	1	0	0	0	1
ORW	0	0	0	1	1	1	0	0	0	4	5	1	13
OSP	0	1	0	0	0	0	0	0	0	0	0	1	2
PCI	0	0	0	0	0	0	0	0	0	0	0	0	0
RCI	0	0	1	0	0	0	0	0	0	0	0	0	1
RiCI	1	0	0	0	0	0	0	0	0	0	0	0	1
SCI	0	0	0	0	0	0	0	0	0	0	0	0	0
SOCF	0	0	0	0	0	1	0	0	1	0	0	0	2
TCI	0	1	0	1	0	0	0	0	0	0	0	0	2
ToCI	0	0	0	0	0	0	0	0	0	0	2	0	2
WCI	0	0	0	1	1	0	0	0	0	1	0	0	3
Total	2	7	5	6	9	8	3	4	5	9	11	4	73

Table 9. Investigator Monthly Report Summary by Type of Investigation March 2010 to February 2011	
Investigations	Cases Initiated during the Month
Drugs (Staff/Inmate)	2
Drugs (Inmate/Visitor)	2
Drugs (Mail/Package)	9
Drugs (Staff)	0
Drugs (other)	0
Positive Urinalysis	0
Staff/Inmate Relationship	2
Staff Misconduct	12
Assault-(Inmate on Staff)	1
Assault (Inmate on Inmate)	1
Sexual Assault (Inmate on Inmate)	0
Other:	27
Background Investigations	41
Total	97

Table 10. Medical Services September 2010 to February 2011							
	September	October	November	December	January	February	Total
Sick Call							
Nurse Intake Screen	43	43	24	136	77	125	448
Nurse Referrals to Doctor	153	148	180	195	179	169	1,024
New Intakes Referred to Physician	16	17	7	62	36	40	178
Nurse Sick Call and Assessments	402	413	486	446	475	475	2,697
Doctor Sick Call	384	316	325	264	319	314	1,922
Doctor History and Physicals Done	0	4	0	2	14	0	20
Doctor No Shows	0	0	0	0	0	0	0
Emergency Triage							
Sent to local ER	7	5	5	8	4	3	32
Sent to OSU ER	1	2	4	1	1	4	13
Sent from Local to OSU	1	2	2	0	1	1	7
Inmate Emergencies Treated On Site	175	154	229	153	204	206	1,121
Staff Treated	94	104	97	84	84	98	561
Visitors Treated	0	0	0	0	0	0	0
Infirmiry Care							
Bed Days Used for Medical	134	141	88	66	158	23	610
Bed Days Used for	15	40	19	16	17	68	175

CIIC Report: The Southern Ohio Correctional Facility (SOCF) 45

Mental							
Bed Days Used for Security	133	80	66	82	79	56	496
Dental Care							
Scheduled Visits	261	276	241	280	262	271	1,591
Emergency Visits	2	5	1	0	3	3	14
Total Visits	263	280	242	280	265	274	1,604
No Shows	0	0	0	0	0	0	0
AMAs	19	18	18	21	16	19	111
Specialty Care On Site							
Optometry							
Consults	20	54	22	16	46	45	203
Inmates Seen	31	47	20	14	40	45	197
Emergencies Seen	0	0	0	0	0	0	0
Hours On Site	7	22	7	7	15	15	73
Podiatry							
Consults	23	26	19	23	14	20	125
Inmates Seen	20	22	18	13	13	18	104
Emergencies Seen	0	0	0	0	0	0	0
Hours On Site	5	4	5	7	3	5	29
Pharmacy							
Medical Refills	1,333	1,110	1,404	1,143	1,121	884	6,995
Mental Refills	487	383	501	359	373	374	2,477
Medical New Prescriptions	1,214	1,276	863	1,260	1,084	1,010	6,707
Mental New Prescriptions	295	502	364	441	457	320	2,379
Total Prescriptions	3,329	3,271	3,132	3,203	3,035	2,588	18,558
Medical Controlled Prescriptions	40	26	26	28	29	23	172
Mental Controlled Prescriptions	0	0	0	0	0	0	0
Lab Data							
Blood Draws	151	187	128	181	216	145	1,008
DNA Blood Draws	0	0	0	0	0	0	0
Mental Health Blood Draws	64	11	65	112	39	23	314
EKGs	10	5	13	2	11	2	43

CIIC Report: The Southern Ohio Correctional Facility (SOCF) 46

Non CMC X-Rays	83	62	77	60	71	63	416
Infections Disease Data							
Number Inmates Tested for TB	1351	2	0	0	0	6	1,359
Positive PPD Test	0	0	0	0	0	0	0
Staff PPD	625	2	1	10	8	3	649
Inmates Completed INH	1	0	0	0	0	0	1
Inmates Incomplete INH	2	0	0	0	0	0	2
Inmates Refusing INH	0	0	0	0	0	0	0
HIV Positive Inmates	0	0	0	0	0	0	0
Inmate HIV Conversions	0	0	0	0	0	0	0
Deaths							
Deaths Expected	0	0	0	0	0	0	0
Deaths Unexpected	0	0	0	0	0	0	0
Suicides	0	0	0	0	0	0	0
Homicides	0	0	0	0	0	0	0
Deaths at Local Hospital	0	0	0	0	0	0	0
Deaths at OSU	0	0	0	0	0	0	0
Deaths at CMC	0	0	0	0	0	0	0

**Table 11.
Percent of Prison Population on the Mental Health Caseload by Institution
January 2011**

Institution	Percent of Total Population on Mental Health Caseload	January 3, 2011 Population Count	Number of Inmates on Mental Health Caseload January 2011
Oakwood CF	93.5	138	129
Northeast Pre-Release Cent.	54.8	496	272
Franklin Pre-Release Center	51.6	477	246
Ohio Reformatory for Women	49.0	2,582	1,265
Southern Ohio CF	35.8	1,469	526
Trumbull CI	26.7	1,370	366
Chillicothe CI	25.9	2,891	748
Toledo CI	25.4	1,198	304
Allen CI	23.7	1,329	315
Hocking CF	23.7	477	113
Belmont CI	21.8	2,682	586
Marion CI	21.8	2,292	500
Mansfield CI	21.1	2,472	521
Warren CI	20.6	1,376	284
Richland CI	19.5	2,526	493
Madison CI	18.7	2,322	434
North Central CI	18.6	2,323	431
Corrections Medical Center	18.5	124	23
Lorain CI	18.3	1,682	308
Noble CI	18.0	2,405	434
North Coast Corr. Treat. Facility	17.9	687	123
Ohio State Penitentiary	17.1	561	96
Correctional Reception Cent.	16.9	1,495	253
Lebanon CI	16.8	2,773	465
Southeastern CI	16.8	1,534	257
London CI	16.7	2,496	418
Grafton CI	16.4	1,516	249
Pickaway CI	14.9	2,112	315
Ross CI	14.3	2,579	368
Lake Erie CI	13.1	1,499	197
Dayton CI	0.4	787	3
TOTALS	21.8	50,670	11,042

Table 12.
Seriously Mentally Ill by Institution with Number and Percent
January 2011

Institution	Number of Seriously Mentally Ill	Percent
Ohio Reformatory for Women (Females)	630	13.2
Chillicothe Correctional Institution	419	8.8
Belmont Correctional Institution	259	5.4
Southern Ohio Correctional Facility	240	5.0
Lebanon Correctional Institution	212	4.4
Madison Correctional Institution	199	4.2
Correctional Reception Center	185	3.9
Mansfield Correctional Institution	187	3.9
Warren Correctional Institution	189	3.9
Allen Correctional Institution	180	3.8
London Correctional Institution	176	3.7
Noble Correctional Institution	171	3.6
Marion Correctional Institution	165	3.4
Northeast Pre-Release Center (Females)	151	3.2
North Central Correctional Institution	146	3.0
Pickaway Correctional Institution	141	2.9
Southeastern Correctional Institution	136	2.8
Grafton Correctional Institution	131	2.7
Franklin Pre-Release Center (Females)	123	2.6
Richland Correctional Institution	119	2.5
Ross Correctional Institution	108	2.3
Trumbull Correctional Institution	100	2.1
Oakwood Correctional Facility	97	2.0
Toledo Correctional Institution	97	2.0
Lorain Correctional Institution	89	1.9
Lake Erie Correctional Institution	78	1.6
Hocking Correctional Facility	36	0.8
Corrections Medical Center	12	0.3
Ohio State Penitentiary	8	0.2
North Coast Correctional Treatment Facility	3	0.1
Dayton Correctional Institution	0	0
Total	4,787	100%

Table 13. Academic Monthly Enrollment and Academic Waitlist February 2011		
	Monthly Academic Enrollment – February 2011	YTD Academic Waitlist – February 2011*
ACI/OCF	122	135
BECI	402	648
CCI	475	333
CMC	0	0
CRC	217	141
DCI/MEPRC	112	40
FPRC	133	83
GCI	141	105
HCF	64	104
LAECI	184	249
LECI	264	797
LOCI	268	169
LORCI	112	257
MACI	200	709
MANCI	170	556
MCI	263	180
NCI	200	783
NCCI	235	329
NCCTF	80	174
NEPRC	148	33
ORW	576	628
OSP	102	65
PCI	292	589
RICI	354	355
RCI	155	269
SCI	391	492
SOCF	82	221
TOCI	122	162
TCI	203	163
WCI	136	317
Total	6,203	9,086
<p>*Total number of inmates shown as ‘Inmates without GED and on Academic Wait List’ represents a one-day snapshot of the number of inmates on the institutional academic wait lists.</p>		

Table 14.
GEDs Passed and Inmates Without GED and on Academic Waitlist
February 2011

	GEDs PASSED - YTD as of February 2011	Inmates Without GED and on Academic Wait List - YTD February 2011*
ACI/OCF	13	135
BECI	91	648
CCI	80	333
CMC	0	0
CRC	24	141
DCI/MEPRC	15	40
FPRC	39	83
GCI	29	105
HCF	1	104
LAECI	41	249
LECI	15	797
LOCI	46	169
LORCI	18	257
MACI	46	709
MANCI	62	556
MCI	38	180
NCI	103	783
NCCI	77	329
NCCTF	43	174
NEPRC	5	33
ORW	61	628
OSP	26	65
PCI	14	589
RICI	73	355
RCI	60	269
SCI	50	492
SOCF	59	221
TOCI	15	162
TCI	33	163
WCI	14	317
TOTAL	1,191	9,086

*Total number of inmates shown as 'Inmates without GED and on Academic Wait List' represents a one-day snapshot of the number of inmates on the institutional academic wait lists.

**Table 15.
Inmate Enrollment in Educational Programs
February 2011**

Program	For Month	< 22	YTD	Waiting List	# of Certificates		% Attained Goals	
					Month	YTD	QTR	YTD
Literacy	0	0	0	0	0	0		
ABLE (Adult Basic and Literacy Education)	23	11	85	128	3	17	100%	100%
Pre-GED	15	1	50	61	5	25	100%	100%
GED	44	14	66	32	15	59	98%	99%
GED Evening	0	0	0		0	0		
HS/HS Options	0	0	0	0	0	0		
Academic Total	82	26	201	221	23	101	99%	99%
Career-Tech (by program)	For Month	< 22	YTD	Waiting List	# of Certificates		% Attained Goals	
					Month	YTD	QTR	YTD
	-	-	-	-	-	-	-	-
	-	-	-	-	-	-	-	-
	-	-	-	-	-	-	-	-
	-	-	-	-	-	-	-	-
Career-Tech Total	-	-	-	-	-	-	-	-
Special Education	12	12	22	-	-	-		
Title One	-	-	-	-	-	-		
EIPP (Education Intensive Prison Program)	-	-	-	-	-	-		
TEP (Transitional Education Program)	-	-	-	-	-	-		
YTP	-	-	-	-	-	-		

CIIC Report: The Southern Ohio Correctional Facility (SOCF) 52

ESL (English as Second Language)	-	-	-	-	-	-				
Career Enhancement	0	0	9	11	-	-				
					50%	100%	50%	100%	-	-
Apprenticeship	2	0	7	0	0	0	0	0		
	For Month	< 22	YTD	Waiting List	Program Cert.		1-Year Cert.		2-Year Cert.	
					Term	YTD	Term	YTD	Term	YTD
Advanced Job Training	-	-	-	-	-	-	-	-	-	-
	For Month	< 22	YTD	Waiting List	# of Certificates		% Attained Goals			
					Month	YTD	QTR	YTD		
Total GEDs given	16		77							
Total GEDs passed	15		59							
Literacy Tutors	-		-							
Other Tutors	-		-							
Tutors Trained	-		-							
Tutor Hours	-		-							
Children served in Reading Room	187		1,631							
Narrator Hours	-		-							
Work Keys	-		-							

Table 16.
CIIC Contacts with Institutional Breakdown
January 1, 2011 to April 1, 2011

Institution	Contacts	Percent
Southern Ohio Correctional Facility	61	12.1
Chillicothe Correctional Institution	43	8.5
Marion Correctional Institution	43	8.5
Toledo Correctional Institution	42	8.3
Lebanon Correctional Institution	35	6.9
Madison Correctional Institution	25	4.9
Warren Correctional Institution	25	4.9
Belmont Correctional Institution	24	4.7
Lake Erie Correctional Institution	22	4.3
Pickaway Correctional Institution	20	4.0
Ohio Reformatory for Women	17	3.4
Allen Correctional Institution	15	3.0
Ross Correctional Institution	15	3.0
Trumbull Correctional Institution	13	2.6
Richland Correctional Institution	13	2.6
Grafton Correctional Institution	11	2.2
Hocking Correctional Facility	10	2.0
North Central Correctional Institution	10	2.0
London Correctional Institution	10	2.0
Noble Correctional Institution	9	1.8
Corrections Medical Center	8	1.6
Mansfield Correctional Institution	8	1.6
Dayton Correctional Institution	7	1.4
Other	4	0.8
Ohio State Penitentiary	3	0.6
Southeastern Correctional Institution	3	0.6
North East Pre-release Center	2	0.4
Oakwood Correctional Facility	2	0.4
Northeast Ohio Correctional Center	2	0.4
Corrections Reception Center	1	0.2
Franklin Pre-release Center	1	0.2
Lorain Correctional Institution	1	0.2
North Coast Correctional Treatment Facility	1	0.2
Montgomery Education Pre-release	0	0.0
Total	506	100%

Table 17.
CIIC Concerns by Institutional Breakdown
January 1, 2011 to April, 2011

Institution	Concerns	Percent
Southern Ohio Correctional Facility	293	15.2
Toledo Correctional Institution	221	11.5
Chillicothe Correctional Institution	164	8.5
Marion Correctional Institution	148	7.7
Lebanon Correctional Institution	121	6.3
Belmont Correctional Institution	89	4.6
Warren Correctional Institution	88	4.6
Lake Erie Correctional Institution	79	4.1
Pickaway Correctional Institution	74	3.8
Richland Correctional Institution	73	3.8
Madison Correctional Institution	71	3.7
Hocking Correctional Facility	61	3.2
Trumbull Correctional Institution	59	3.1
Ross Correctional Institution	51	2.6
Ohio Reformatory for Women	48	2.5
Allen Correctional Institution	39	2.0
Noble Correctional Institution	35	1.8
Grafton Correctional Institution	34	1.8
North Central Correctional Institution	29	1.5
Corrections Medical Center	28	1.5
London Correctional Institution	24	1.2
Mansfield Correctional Institution	21	1.1
Other	16	0.8
Dayton Correctional Institution	14	0.7
North East Ohio Correctional Center	13	0.7
Ohio State Penitentiary	7	0.4
Southeastern Correctional Institution	7	0.4
Oakwood Correctional Facility	6	0.3
Lorain Correctional Institution	4	0.2
Northeast Pre-Release Center	4	0.2
Correctional Reception Center	3	0.2
North Coast Correctional Treatment Facility	3	0.2
Franklin Pre-Release Center	1	0.1
Total	1,928	100%

Table 18.
Top 10 Concerns Reported to CIIC (SOCF)
January 1, 2011 to April 1, 2011

Type of Concern	Number of Concerns
Supervision	65
Inmate Grievance Procedure	37
Health Care	31
Inmate Relations	23
Staff Accountability	19
Force	13
RIB/Hearing Officer	13
Institution Assignment	11
Special Management Housing	10
Psychological/Psychiatric	9

Table 19.
Breakdown of Top Three Concerns Reported to CIIC (SOCF)
January 1, 2011 to April 1, 2011

Type of Concern	Number of Concerns
SUPERVISION	
Unprofessional Conduct	16
Harassment	11
Intimidation/Threats	9
Retaliation for Voicing Complaints	9
Abusive Language	6
Retaliation for Filing Grievance	6
Privacy Violation	4
Conduct Report for No Reason	3
Racial/Ethnic Slurs	1
INMATE GRIEVANCE PROCEDURE	
Inspector Delay/Failure to Investigate	15
Forms Inaccessible	6
Grievance Procedure Doesn't Work	6
Retaliation for Using Grievance Procedure	5
ICR Delay/Failure to Respond	4
Chief Inspector Delay/Failure to Respond	1
HEALTH CARE	
Improper/Inadequate Medical Care	9
Disagree with Diagnosis/Treatment	8
Access/Delay in Receiving Medical Care	7
Delay/Denial of Medication	3
Medical Aide/Device	2

CIIC Report: The Southern Ohio Correctional Facility (SOCF) 56

Medical Records	1
Other	1

C. INSPECTION CHECKLISTS

Inspector: HOOKS

Facility: SOCF
Date: 4/4/11

AREA INSPECTED: HOUSING

HOUSING UNIT: L1

		COMMENTS
1. Do living areas appear clean?	<input checked="" type="radio"/> YES NO	
2. How many toilets are inoperative?	zero	
3. How often are toilet facilities sanitized?	As needed - upon request	
4. Is soap available in each bathroom?	YES <input checked="" type="radio"/> NO	- only indigent
5. Do shower facilities appear to be clean?	<input checked="" type="radio"/> YES NO	- NO soap scum ① for disabilities, bench
6. How often are shower facilities cleaned?	daily	
7. What cleaning materials are used to clean shower facilities?	All purpose cleaner	- planning to get stronger
8. What is the room temperature?	? - check when gets really hot	
9. Are cleaning materials kept secure?	<input checked="" type="radio"/> YES NO	
10. Is the CIIC memo posted?	YES NO	bulletin board
11. Are the Commissary, programs, and library schedules posted?	YES NO	+ use tv systems
12. Are kites available on the unit?	<input checked="" type="radio"/> YES NO	
13. Are informal complaint forms available on the unit?	<input checked="" type="radio"/> YES NO	
14. How many shakedowns are performed on each shift?	3 per shift min.	
15. Are cell windows clear of obstruction? / Are views of beds in dorms obstructed?	<input checked="" type="radio"/> YES NO	NO

CIIC Report: The Southern Ohio Correctional Facility (SOCF) 58

Inspector: Hooker L1

Facility: _____
Date: _____

16. Is the atmosphere of the unit calm or disruptive?	Calm	-most out at rec
17. Are officers performing regular security checks?	<input checked="" type="radio"/> YES NO	
18. Are laundry facilities operational?	<input checked="" type="radio"/> YES NO	-schedule: 4x week (whites/blankets etc.)
19. Are lights turned on all night?	<input checked="" type="radio"/> YES NO	-dimmed range lights stay on.

ADDITIONAL COMMENTS (including inmate communication):

Count: 77 (can hold 80)
- new grant to update laundry facilities

CIIC Report: The Southern Ohio Correctional Facility (SOCF) 59

Inspector: BITG

Facility: SOCF
Date: 4/14/11

AREA INSPECTED: HOUSING

HOUSING UNIT: 12

		COMMENTS
1. Do living areas appear clean?	<input checked="" type="radio"/> YES NO	
2. How many toilets are inoperative?		none
3. How often are toilet facilities sanitized?		Daily
4. Is soap available in each bathroom?	<input checked="" type="radio"/> YES NO	
5. Do shower facilities appear to be clean?	YES NO	
6. How often are shower facilities cleaned?		every night on second
7. What cleaning materials are used to clean shower facilities?		Green chemical on let super wet
8. What is the room temperature?		unknown
9. Are cleaning materials kept secure?	<input checked="" type="radio"/> YES NO	
10. Is the CIIC memo posted?	<input checked="" type="radio"/> YES NO	
11. Are the Commissary, programs, and library schedules posted?	<input checked="" type="radio"/> YES NO	
12. Are kites available on the unit?	<input checked="" type="radio"/> YES NO	kept in cfr booth
13. Are informal complaint forms available on the unit?	<input checked="" type="radio"/> YES NO	
14. How many shakedowns are performed on each shift?		at least 3
15. Are cell windows clear of obstruction? / Are views of beds in dorms obstructed?	<input checked="" type="radio"/> YES NO	

CIIC Report: The Southern Ohio Correctional Facility (SOCF) 60

22

Inspector: BTC

Facility: SOCF
Date: 4/4/11

16. Is the atmosphere of the unit calm or disruptive?			mostly calm a lot of chatter
17. Are officers performing regular security checks?	<input checked="" type="radio"/> YES	NO	1x 30 min or less
18. Are laundry facilities operational?	<input checked="" type="radio"/> YES	NO	central laundry
19. Are lights turned on all night?	<input checked="" type="radio"/> YES	NO	not in cells, lights in range dimmed at night
ADDITIONAL COMMENTS (including inmate communication):			

CIIC Report: The Southern Ohio Correctional Facility (SOCF) 61

Inspector: Hooks

Facility: SOCF
Date: 4/14

AREA INSPECTED: HOUSING

HOUSING UNIT: L3 ~~COV-10001~~

		COMMENTS
1. Do living areas appear clean?	<input checked="" type="radio"/> YES <input type="radio"/> NO	
2. How many toilets are inoperative?	zero	
3. How often are toilet facilities sanitized?	- upon request + cell clean ups: 1x per week	
4. Is soap available in each bathroom?	YES <input checked="" type="radio"/> NO	- only if indigent
5. Do shower facilities appear to be clean?	<input checked="" type="radio"/> YES <input type="radio"/> NO	some soap scum
6. How often are shower facilities cleaned?	daily	→ given 7x per week (more for inmates on work duties - added privilege)
7. What cleaning materials are used to clean shower facilities?	general disinfect.	
8. What is the room temperature?	comfortable	
9. Are cleaning materials kept secure?	<input checked="" type="radio"/> YES <input type="radio"/> NO	
10. Is the CIIC memo posted?	<input checked="" type="radio"/> YES <input type="radio"/> NO	w/ comm. members (additional CIIC info)
11. Are the Commissary, programs, and library schedules posted?	<input checked="" type="radio"/> YES <input type="radio"/> NO	
12. Are kites available on the unit?	<input checked="" type="radio"/> YES <input type="radio"/> NO	
13. Are informal complaint forms available on the unit?	<input checked="" type="radio"/> YES <input type="radio"/> NO	upon request ↓
14. How many shakedowns are performed on each shift?	3 per shift	(1st/2nd shift) only
15. Are cell windows clear of obstruction? / Are views of beds in dorms obstructed?	<input checked="" type="radio"/> YES <input type="radio"/> NO	<u>NO</u>

CIIC Report: The Southern Ohio Correctional Facility (SOCF) 62

Inspector: Hooks

Facility: SOCF
Date: 4/4/11

16. Is the atmosphere of the unit calm or disruptive?	Calm	-very quiet
17. Are officers performing regular security checks?	<input checked="" type="radio"/> YES NO	
18. Are laundry facilities operational?	<input checked="" type="radio"/> YES NO	-sent out
19. Are lights turned on all night?	<input checked="" type="radio"/> YES NO	-just dim range lights
ADDITIONAL COMMENTS (including inmate communication):		
<p style="text-align: center;">Count: 79</p>		

CIIC Report: The Southern Ohio Correctional Facility (SOCF) 63

Inspector: Saul

Facility: SOCF
Date: 4-5-11

AREA INSPECTED: HOUSING

HOUSING UNIT: L4

L4-57 - removed
L4-34 obstruction

		COMMENTS
1. Do living areas appear clean?	<input checked="" type="radio"/> YES NO	
2. How many toilets are inoperative?	none but 1 sink	
3. How often are toilet facilities sanitized?	daily - can ask porter	
4. Is soap available in each bathroom?	YES NO	N/A
5. Do shower facilities appear to be clean?	<input checked="" type="radio"/> YES NO	
6. How often are shower facilities cleaned?	daily	
7. What cleaning materials are used to clean shower facilities?		unknown
8. What is the room temperature?	70°	
9. Are cleaning materials kept secure?	<input checked="" type="radio"/> YES NO	locked
10. Is the CIIC memo posted?	<input checked="" type="radio"/> YES NO	
11. Are the Commissary, programs, and library schedules posted?	<input checked="" type="radio"/> YES NO	
12. Are kites available on the unit?	YES <input checked="" type="radio"/> NO	
13. Are informal complaint forms available on the unit?	YES <input checked="" type="radio"/> NO	
14. How many shakedowns are performed on each shift?	3	not yet today
15. Are cell windows clear of obstruction? / Are views of beds in dorms obstructed?	<input checked="" type="radio"/> YES NO	

CIIC Report: The Southern Ohio Correctional Facility (SOCF) 64

Inspector: _____

Facility: SOCF
Date: 4-5-11

16. Is the atmosphere of the unit calm or disruptive?	calm	
17. Are officers performing regular security checks?	<input checked="" type="radio"/> YES <input type="radio"/> NO	
18. Are laundry facilities operational?	YES NO	E. complex
19. Are lights turned on all night?	<input checked="" type="radio"/> YES <input type="radio"/> NO	security lights
ADDITIONAL COMMENTS (including inmate communication):		
<p>L4-76 - sink does not ^{drain} empty of water</p>		

CIIC Report: The Southern Ohio Correctional Facility (SOCF) 65

Inspector: Robison

Facility: SOCF
Date: 4/5/11

AREA INSPECTED: HOUSING

HOUSING UNIT: L5

		COMMENTS
1. Do living areas appear clean?	<input checked="" type="radio"/> YES <input type="radio"/> NO	
2. How many toilets are inoperative?	<u>0 - all working</u>	
3. How often are toilet facilities sanitized?	<u>weekly clean up by Ims - own cell</u>	
4. Is soap available in each bathroom?	<u>only in degt</u> <input checked="" type="radio"/> YES <input type="radio"/> NO	<u>Buy f. commissary</u>
5. Do shower facilities appear to be clean?	<u>some mildew spots</u> <input checked="" type="radio"/> YES <input type="radio"/> NO	<u>some mold on part</u> <u>some puddle</u> <u>some "rust" or chipped paint (minimal)</u>
6. How often are shower facilities cleaned?	<u>daily - g'porters</u>	
7. What cleaning materials are used to clean shower facilities?	<u>64 Cleaner - daily</u> <u>- use 10/64 to 11</u> <u>- bleach about 1X month</u>	
8. What is the room temperature?	<u>~ 75° most time</u> <u>unless Ims open windows</u>	<u>3 exhaust fans in ceiling</u>
9. Are cleaning materials kept secure?	<u>not on unit - locked elsewhere</u> <input checked="" type="radio"/> YES <input type="radio"/> NO	<u>daily unit get bucket of water & cleaner</u> <u>more as needed</u>
10. Is the CIIC memo posted?	<input checked="" type="radio"/> YES <input checked="" type="radio"/> NO	
11. Are the Commissary, programs, and library schedules posted?	<input checked="" type="radio"/> YES <input type="radio"/> NO	<u>by door</u>
12. Are kites available on the unit?	<input checked="" type="radio"/> YES <input type="radio"/> NO	<u>have to ask CO</u>
13. Are informal complaint forms available on the unit?	<input checked="" type="radio"/> YES <input type="radio"/> NO	<u>" " " "</u>
14. How many shakedowns are performed on each shift?	<u>3 each 1st & 2nd</u> <u>none for 3rd unless emergency</u>	
15. Are cell windows clear of obstruction? / Are views of beds in dorms obstructed?	<input checked="" type="radio"/> YES <input type="radio"/> NO	

are unobstructed

CIIC Report: The Southern Ohio Correctional Facility (SOCF) 66

Inspector: Robison

Facility: SOCF
Date: 4/5/11

16. Is the atmosphere of the unit calm or disruptive?		
17. Are officers performing regular security checks?	<input checked="" type="radio"/> YES <input type="radio"/> NO	daily
18. Are laundry facilities operational? <i>not on unit</i>	<input checked="" type="radio"/> YES <input checked="" type="radio"/> NO	positive pick up & return
19. Are lights turned on all night?	<input checked="" type="radio"/> YES <input type="radio"/> NO	main lights off

ADDITIONAL COMMENTS (including inmate communication):

secondary lights above
range in front of cells
are on.

up until 11 pm - inmates may have overhead lights
on in cell

* Positive
paint color is good - lime green & yellow
- Cheerful
- reflect.

* Ceiling needs painted white
- 4 phones on unit 2 top, 2 bottom
- 8 showers.

CIIC Report: The Southern Ohio Correctional Facility (SOCF) 67

Inspector: Furderer

Facility: SOCF
Date: 4-5-11

AREA INSPECTED: HOUSING

HOUSING UNIT: L6

		COMMENTS
1. Do living areas appear clean?	<input checked="" type="radio"/> YES NO	
2. How many toilets are inoperative?		- one in empty cell
3. How often are toilet facilities sanitized?		- inmates may clean daily
4. Is soap available in each bathroom?	<input checked="" type="radio"/> YES NO	
5. Do shower facilities appear to be clean?	<input checked="" type="radio"/> YES NO	
6. How often are shower facilities cleaned?	daily	
7. What cleaning materials are used to clean shower facilities?	- general disinfectant - window cleaner	
8. What is the room temperature?		- do not keep log
9. Are cleaning materials kept secure?	<input checked="" type="radio"/> YES NO	
10. Is the CIIC memo posted?	<input checked="" type="radio"/> YES NO	- on TV as well
11. Are the Commissary, programs, and library schedules posted?	<input checked="" type="radio"/> YES NO	- on TV as well
12. Are kites available on the unit?	<input checked="" type="radio"/> YES NO	
13. Are informal complaint forms available on the unit?	<input checked="" type="radio"/> YES NO	
14. How many shakedowns are performed on each shift?	three	
15. Are cell windows clear of obstruction? / Are views of beds in dorms obstructed?	<input checked="" type="radio"/> YES NO	

CIIC Report: The Southern Ohio Correctional Facility (SOCF) 68

Inspector: Furderer

Facility: SOCF
Date: 4-5-11

LG

16. Is the atmosphere of the unit calm or disruptive?	Calm	
17. Are officers performing regular security checks?	<input checked="" type="radio"/> YES NO	
18. Are laundry facilities operational?	<input checked="" type="radio"/> YES NO	
19. Are lights turned on all night?	YES <input checked="" type="radio"/> NO	- dimmed at night
<p>ADDITIONAL COMMENTS (including inmate communication):</p> <ul style="list-style-type: none"> - inmate Communication - need stronger chemicals - Worms coming up out of shower drains - bring back wash tubs - we have no dish detergent - must wash bowls with tide or bar of soap 		

CIIC Report: The Southern Ohio Correctional Facility (SOCF) 69

Inspector: Furderer

Facility: SOCF
Date: 4-4-11

AREA INSPECTED: HOUSING

HOUSING UNIT: L7

		COMMENTS
1. Do living areas appear clean?	<input checked="" type="radio"/> YES <input type="radio"/> NO	
2. How many toilets are inoperative?		- cell 38 had issue with backup from neighbor cell
3. How often are toilet facilities sanitized?		- inmates may clean daily
4. Is soap available in each bathroom?	<input checked="" type="radio"/> YES <input type="radio"/> NO	
5. Do shower facilities appear to be clean?	<input checked="" type="radio"/> YES <input type="radio"/> NO	
6. How often are shower facilities cleaned?	daily	
7. What cleaning materials are used to clean shower facilities?	- general disinfectant - window cleaner	
8. What is the room temperature?		- do not keep log
9. Are cleaning materials kept secure?	<input checked="" type="radio"/> YES <input type="radio"/> NO	
10. Is the CIIC memo posted?	<input checked="" type="radio"/> YES <input type="radio"/> NO	
11. Are the Commissary, programs, and library schedules posted?	<input checked="" type="radio"/> YES <input type="radio"/> NO	
12. Are kites available on the unit?	<input checked="" type="radio"/> YES <input type="radio"/> NO	
13. Are informal complaint forms available on the unit?	<input checked="" type="radio"/> YES <input type="radio"/> NO	
14. How many shakedowns are performed on each shift?	three	
15. Are cell windows clear of obstruction? / Are views of beds in dorms obstructed?	YES <input checked="" type="radio"/> NO	- some cells covered

CIIC Report: The Southern Ohio Correctional Facility (SOCF) 70

Inspector: Furderer

Facility: SOCF

Date: 4-4-11

L7

16. Is the atmosphere of the unit calm or disruptive?	Calm	
17. Are officers performing regular security checks?	<input checked="" type="radio"/> YES <input type="radio"/> NO	
18. Are laundry facilities operational?	<input checked="" type="radio"/> YES <input type="radio"/> NO	
19. Are lights turned on all night?	YES <input checked="" type="radio"/> NO	dimmed at night

ADDITIONAL COMMENTS (including inmate communication):

- inmate communication
- wash tubs were taken away
- have to ~~to~~ wash personal items in toilet because laundry comes up missing when sent to centralized laundry facility

CIIC Report: The Southern Ohio Correctional Facility (SOCF) 71

Inspector: Jackson

Facility: SOCF
Date: 4-4-11

AREA INSPECTED: HOUSING

HOUSING UNIT: 4A 2-8 (6P)

		COMMENTS
1. Do living areas appear clean?	<input checked="" type="radio"/> YES NO	Yes, but Clothing
2. How many toilets are inoperative?	none yes	1 leaky toilet but it works
3. How often are toilet facilities sanitized?	once per week	unless otherwise noted
4. Is soap available in each bathroom?	<input checked="" type="radio"/> YES NO	
5. Do shower facilities appear to be clean?	<input checked="" type="radio"/> YES NO	Some soap scum
6. How often are shower facilities cleaned?	daily	
7. What cleaning materials are used to clean shower facilities?	✓	Chemicals & water
8. What is the room temperature?	68-72°	
9. Are cleaning materials kept secure?	<input checked="" type="radio"/> YES NO	
10. Is the CIIC memo posted?	<input checked="" type="radio"/> YES <input checked="" type="radio"/> NO	missed
11. Are the Commissary, programs, and library schedules posted?	YES <input checked="" type="radio"/> NO	
12. Are kites available on the unit?	<input checked="" type="radio"/> YES NO	
13. Are informal complaint forms available on the unit?	<input checked="" type="radio"/> YES NO	
14. How many shakedowns are performed on each shift?	daily	3x per Unit
15. Are cell windows clear of obstruction? / Are views of beds in dorms obstructed?	YES NO	

CIIC Report: The Southern Ohio Correctional Facility (SOCF) 72

Inspector: Jackson

Facility: SOCF
Date: 4-4-11

16. Is the atmosphere of the unit calm or disruptive?	<i>full cust'vc</i>	
17. Are officers performing regular security checks?	<input checked="" type="radio"/> YES NO	
18. Are laundry facilities operational?	YES NO	<i>Separate location Quartermaster</i>
19. Are lights turned on all night?	<input checked="" type="radio"/> YES NO	<i>night lights</i>
ADDITIONAL COMMENTS (including inmate communication):		
<p><i>⊕ - Inmates complained of worms coming from showers & drains. As a result, maggots have been seen.</i></p> <p><i>⊖ - Cancel a lot of library visits scheduled for four times a week, cancel three times a week every week</i></p>		

CIIC Report: The Southern Ohio Correctional Facility (SOCF) 73

Inspector: Furderer

Facility: SOCF
Date: 4-4-11

AREA INSPECTED: RECREATION L Side

		COMMENTS
1. Are programs available to all inmates?	<input checked="" type="radio"/> YES <input type="radio"/> NO	all general population
2. How many staff are assigned to supervise inmates?	4-5	- three therapists + two officers - two Wed and Fri - one Mon, Tues, Thursday, Sat & Sun
3. Are programs posted for inmate information?	<input checked="" type="radio"/> YES <input type="radio"/> NO	
4. Is equipment cleaned and sanitized on a regular basis?	<input checked="" type="radio"/> YES <input type="radio"/> NO	- wipes
5. Are cleaning materials kept secure?	<input checked="" type="radio"/> YES <input type="radio"/> NO	
6. Does recreation equipment appear to be in good working order?	<input checked="" type="radio"/> YES <input type="radio"/> NO	
7. How many inmate workers are assigned to the recreation department?	TO upto 34 Current - 11	just L-side
8. Are inmate workers trained and is this documented?	<input checked="" type="radio"/> YES <input type="radio"/> NO	test on knowledge of programs offered
9. Is a kite log maintained?	YES <input checked="" type="radio"/> NO	
10. Are programs available for inmates with disabilities?	YES <input checked="" type="radio"/> NO	- Currently don't have anything specifically limited in what can offer
ADDITIONAL COMMENTS (including description of recreational areas):		
- Kiosk for MP3 players - few toilets out of service (three urinals)		

CIIC Report: The Southern Ohio Correctional Facility (SOCF) 74

Inspector: Hodges

Facility: SOCF
Date: 4/14

AREA INSPECTED: HOUSING

HOUSING UNIT: J#1 (LC) 20 ^{cells} ~~rooms~~ total

		COMMENTS
1. Do living areas appear clean?	<input checked="" type="radio"/> YES <input type="radio"/> NO	
2. How many toilets are inoperative?	<u>zero</u>	
3. How often are toilet facilities sanitized?	<u>1x per week</u>	
4. Is soap available in each bathroom?	YES <input type="radio"/> NO <input type="radio"/>	
5. Do shower facilities appear to be clean?	<input checked="" type="radio"/> YES <input type="radio"/> NO	<u>-soap scum</u>
6. How often are shower facilities cleaned?	<u>daily</u>	
7. What cleaning materials are used to clean shower facilities?	<u>All purpose cleaner</u>	
8. What is the room temperature?		<u>-gauge when temps get high in summer</u>
9. Are cleaning materials kept secure?	<input checked="" type="radio"/> YES <input type="radio"/> NO	<u>-inmates can clean 1x per week</u>
10. Is the CIIC memo posted?	YES <input type="radio"/> NO <input checked="" type="radio"/>	
11. Are the Commissary, programs, and library schedules posted?	YES <input type="radio"/> NO <input type="radio"/>	<u>-LC so very restrictive</u>
12. Are kites available on the unit?	<input checked="" type="radio"/> YES <input type="radio"/> NO	
13. Are informal complaint forms available on the unit?	<input checked="" type="radio"/> YES <input type="radio"/> NO	
14. How many shakedowns are performed on each shift?	<u>3 per shift</u>	
15. Are cell windows clear of obstruction? / Are views of beds in dorms obstructed?	<input checked="" type="radio"/> YES <input type="radio"/> NO	<u>-have issues w/ slammer cells</u>

CIIC Report: The Southern Ohio Correctional Facility (SOCF) 75

Inspector: Hester
JT

Facility: SOCF
 Date: 4/4/11

16. Is the atmosphere of the unit calm or disruptive?	<u>Calm</u>	
17. Are officers performing regular security checks?	<input checked="" type="radio"/> YES <input type="radio"/> NO	<u>every 15-30 mins</u>
18. Are laundry facilities operational?	<input checked="" type="radio"/> YES <input type="radio"/> NO	<u>daily pick-up - returned same day</u>
19. Are lights turned on all night?	<input checked="" type="radio"/> YES <input type="radio"/> NO	<u>- only dimmed lights - inmate controls</u>

ADDITIONAL COMMENTS (including inmate communication): in cell

17 count

- get rec 5x per week
 - in block rec pods
- no phones
- can have legal materials
 - can get books (lim. amount)
- no tvs etc. / prop. restrictions

CIIC Report: The Southern Ohio Correctional Facility (SOCF) 76

Inspector: Hooks J2

Facility: SOCF
Date: 4/4/11

15. Are cell windows clear of obstruction?	<input checked="" type="radio"/> YES	NO	But issue w/ inmates blocking cell light/windows making visibility difficult	write conduct reports
16. Is the atmosphere of the unit calm or disruptive?	Calm		- but prone to episodes/daily disruptions by certain inmates	
17. Are inmates provided with the required cell furnishings, clothing, toilet paper, soap, etc?	<input checked="" type="radio"/> YES	NO	(if indigent)	
18. Do religious services personnel have access to inmates in segregation?	<input checked="" type="radio"/> YES	NO	Upon request	

ADDITIONAL COMMENTS (including inmate communication and breakdown of inmates):

* Inmate in process of transferring to J2/seg during inspection

- inmate had scratched at arms resulting in a decent amount of blood
- inmate was in a safety gown
- blood on floor by shower (cleaned during inspection) - bic cleaning or spray but of inmate's eyes.
- had tried to dress his wounds, but inmate ripped them off
- spoke w/ inmate → he contin. to let blood drip on cell bars/floor outside his cell, would not wash arm when prompted by staff
- inmate alleges that he is suicidal but staff refuse to put him on a constant watch status

* DC inmates in "slammer cells"

CIIC Report: The Southern Ohio Correctional Facility (SOCF) 77

Inspector: GTC

Facility: SOCF
Date: 4/4/11

AREA INSPECTED: HOUSING

HOUSING UNIT: J3-S/N

		COMMENTS
1. Do living areas appear clean?	<input checked="" type="radio"/> YES <input type="radio"/> NO	some cells appear cluttered
2. How many toilets are inoperative?		none per report 00
3. How often are toilet facilities sanitized?		1x wk
4. Is soap available in each bathroom?	<input checked="" type="radio"/> YES <input type="radio"/> NO	
5. Do shower facilities appear to be clean?	YES <input checked="" type="radio"/> NO	no - could use a power washer
6. How often are shower facilities cleaned?		Daily
7. What cleaning materials are used to clean shower facilities?		cleaning mixture
8. What is the room temperature?		unknown
9. Are cleaning materials kept secure?	<input checked="" type="radio"/> YES <input type="radio"/> NO	in a secure closet
10. Is the CIIC memo posted?	<input checked="" type="radio"/> YES <input checked="" type="radio"/> NO	not posted
11. Are the Commissary, programs, and library schedules posted?	<input checked="" type="radio"/> YES <input type="radio"/> NO	
12. Are kites available on the unit?	YES <input checked="" type="radio"/> NO	It has not been restocked yet since Friday on J3N - yes
13. Are informal complaint forms available on the unit?	YES <input checked="" type="radio"/> NO	not has been restocked yet on J3S
14. How many shakedowns are performed on each shift?		3/shift
15. Are cell windows clear of obstruction? / Are views of beds in dorms obstructed?	<input checked="" type="radio"/> YES <input type="radio"/> NO	

CIIC Report: The Southern Ohio Correctional Facility (SOCF) 78

13 '8/W

Inspector: GTC

Facility: SOCF
Date: 4/4/11

16. Is the atmosphere of the unit calm or disruptive?		Calm - range TV level
17. Are officers performing regular security checks?	<input checked="" type="radio"/> YES NO	Every 30 minutes
18. Are laundry facilities operational?	<input checked="" type="radio"/> YES NO	4x wk
19. Are lights turned on all night?	YES <input checked="" type="radio"/> NO	only bay lights on ⊕ can keep cell lights on
ADDITIONAL COMMENTS (including inmate communication):		

CIIC Report: The Southern Ohio Correctional Facility (SOCF) 79

Inspector: BTM

Facility: SOCF
Date: 4/4/11

AREA INSPECTED: HOUSING

HOUSING UNIT: J4 N/S

		COMMENTS
1. Do living areas appear clean?	<input checked="" type="radio"/> YES <input type="radio"/> NO	Some cells look like they need attention
2. How many toilets are inoperative?		1 - work order completed
3. How often are toilet facilities sanitized?		Scheduled 1x wk or upon their cell
4. Is soap available in each bathroom?	<input checked="" type="radio"/> YES <input type="radio"/> NO	purchased from commissary or provided indigent pack
5. Do shower facilities appear to be clean?	<input checked="" type="radio"/> YES <input type="radio"/> NO	Yes
6. How often are shower facilities cleaned?		Daily
7. What cleaning materials are used to clean shower facilities?		concentrate lot produced by OPI
8. What is the room temperature?		unknown, staff from med take temps in PTO/comm area cells
9. Are cleaning materials kept secure?	<input checked="" type="radio"/> YES <input type="radio"/> NO	in a locked closet
10. Is the CIIC memo posted?	<input type="radio"/> YES <input checked="" type="radio"/> NO	
11. Are the Commissary, programs, and library schedules posted?	<input checked="" type="radio"/> YES <input type="radio"/> NO	but have to take case manager for program schedule
12. Are kites available on the unit?	<input type="radio"/> YES <input checked="" type="radio"/> NO	Staff alerted and will be restock
13. Are informal complaint forms available on the unit?	<input type="radio"/> YES <input checked="" type="radio"/> NO	
14. How many shakedown are performed on each shift?		3/shift by policy
15. Are cell windows clear of obstruction? / Are views of beds in dorms obstructed?	<input checked="" type="radio"/> YES <input type="radio"/> NO	

CIIC Report: The Southern Ohio Correctional Facility (SOCF) 80

J4 n/s

Inspector: GTH

Facility: SOCF
Date: 4/2/11

16. Is the atmosphere of the unit calm or disruptive?		Somewhat disruptive
17. Are officers performing regular security checks?	<input checked="" type="radio"/> YES NO	every 30 minutes at scheduled intervals
18. Are laundry facilities operational?	<input checked="" type="radio"/> YES NO	4 days a week
19. Are lights turned on all night?	YES <input checked="" type="radio"/> NO	All have light in cell w/ night light that stays on all the time
ADDITIONAL COMMENTS (including inmate communication):		
<p>- Several non MI in MH cells w/ glass fronts with no more vacant cells</p> <p>- many inmates complained of not getting recreation every day all week.</p>		

CIIC Report: The Southern Ohio Correctional Facility (SOCF) 81

Inspector: Hooks

Facility: SOCF
Date: 4/4/11

AREA INSPECTED: RECREATION J Block

		COMMENTS
1. Are programs available to all inmates?	<input checked="" type="radio"/> YES <input type="radio"/> NO	all get 1 hr unless cond. report in rec. area.
2. How many staff are assigned to supervise inmates?	get all times	
3. Are programs posted for inmate information?	<input checked="" type="radio"/> YES <input type="radio"/> NO	schedule
4. Is equipment cleaned and sanitized on a regular basis?	YES <input type="radio"/> NO	porter assigned daily
5. Are cleaning materials kept secure?	YES <input checked="" type="radio"/> NO	machine on well
6. Does recreation equipment appear to be in good working order?	<input checked="" type="radio"/> YES <input type="radio"/> NO	
7. How many inmate workers are assigned to the recreation department?	1 porter	
8. Are inmate workers trained and is this documented?	<input checked="" type="radio"/> YES <input type="radio"/> NO	on chemicals
9. Is a kite log maintained?	<input checked="" type="radio"/> YES <input type="radio"/> NO	goes to spec. duties office
10. Are programs available for inmates with disabilities?	YES <input checked="" type="radio"/> NO	no
ADDITIONAL COMMENTS (including description of recreational areas):		
<p>36 cages inside rec & outside ↳ 72 total *outside has ball rim in addition to machine</p>		

CIIC Report: The Southern Ohio Correctional Facility (SOCF) 82

Inspector: Furderer

Facility: SOCF
Date: 4-4-11

AREA INSPECTED: HOUSING

HOUSING UNIT: K1

		COMMENTS
1. Do living areas appear clean?	<input checked="" type="radio"/> YES NO	
2. How many toilets are inoperative?	unknown	
3. How often are toilet facilities sanitized?	daily	- inmates can clean daily
4. Is soap available in each bathroom?	<input checked="" type="radio"/> YES NO	
5. Do shower facilities appear to be clean?	<input checked="" type="radio"/> YES NO	
6. How often are shower facilities cleaned?	daily	
7. What cleaning materials are used to clean shower facilities?	- disinfectant - window cleaner	
8. What is the room temperature?		- do not keep log
9. Are cleaning materials kept secure?	<input checked="" type="radio"/> YES NO	
10. Is the CIIC memo posted?	<input checked="" type="radio"/> YES NO	- on TVs
11. Are the Commissary, programs, and library schedules posted?	<input checked="" type="radio"/> YES NO	- on TVs
12. Are kites available on the unit?	<input checked="" type="radio"/> YES NO	
13. Are informal complaint forms available on the unit?	<input checked="" type="radio"/> YES NO	
14. How many shakedowns are performed on each shift?	three	
15. Are cell windows clear of obstruction? / Are views of beds in dorms obstructed?	<input checked="" type="radio"/> YES NO	

CIIC Report: The Southern Ohio Correctional Facility (SOCF) 83

Inspector: Furderer

Facility: SOCF

Date: 4-4-11

K1

16. Is the atmosphere of the unit calm or disruptive?	Calm	
17. Are officers performing regular security checks?	<input checked="" type="radio"/> YES NO	
18. Are laundry facilities operational?	<input checked="" type="radio"/> YES NO	
19. Are lights turned on all night?	YES <input checked="" type="radio"/> NO	- dimmed at night

ADDITIONAL COMMENTS (including inmate communication):

- inmate communication
- dirty blankets
 - blanket has feces
- Staff ignored me when tried to exchange them
- want cigarettes back

CIIC Report: The Southern Ohio Correctional Facility (SOCF) 84

Inspector: Jackson

Facility: SOCF
Date: 4-4-11

AREA INSPECTED: HOUSING

HOUSING UNIT: K-2

		COMMENTS
1. Do living areas appear clean?	<input checked="" type="radio"/> YES <input type="radio"/> NO	Cluttering / Areas cleaned
2. How many toilets are inoperative?	none	
3. How often are toilet facilities sanitized?	once a week	or as needed by inmates
4. Is soap available in each bathroom?	<input checked="" type="radio"/> YES <input type="radio"/> NO	
5. Do shower facilities appear to be clean?	YES <input checked="" type="radio"/> NO	Spelled like urine
6. How often are shower facilities cleaned?	daily	
7. What cleaning materials are used to clean shower facilities?	—	chemicals and diluted water
8. What is the room temperature?	68-72°	
9. Are cleaning materials kept secure?	<input checked="" type="radio"/> YES <input type="radio"/> NO	
10. Is the CIIC memo posted?	YES <input checked="" type="radio"/> NO	may be on the TV
11. Are the Commissary, programs, and library schedules posted?	YES <input checked="" type="radio"/> NO	
12. Are kites available on the unit?	<input checked="" type="radio"/> YES <input type="radio"/> NO	
13. Are informal complaint forms available on the unit?	<input checked="" type="radio"/> YES <input type="radio"/> NO	
14. How many shakedown are performed on each shift?	3x	Random per shift
15. Are cell windows clear of obstruction? / Are views of beds in dorms obstructed?	<input checked="" type="radio"/> YES <input type="radio"/> NO	No obstructed views

Inspector: Jackson

Facility: SOCF
Date: 4-4-11

16. Is the atmosphere of the unit calm or disruptive?	Fairly Calm	
17. Are officers performing regular security checks?	<input checked="" type="radio"/> YES NO	
18. Are laundry facilities operational?	YES NO	Separate facility
19. Are lights turned on all night?	<input checked="" type="radio"/> YES NO	Night lights

ADDITIONAL COMMENTS (including inmate communication):

- * - Staff will retaliate for the ~~response~~ ^{responding} to visitors
- * - News Mening with food, VOF, interfering with mails
- * - Legal Services don't come on the range
- * - Don't clean cells
- * - Food is cold
- * - Sick-call doesn't work the block unless someone asks for her.
- * - ~~But~~ Criminal write requests Branch (no response)
- * - Been denied a lot of programs, on the waiting list behavioral must improve.
- * - Need toilet paper
- * - ~~Handwritten~~
Felon Holders (April 29 - Daily 625-400)

CIIC Report: The Southern Ohio Correctional Facility (SOCF) 86

Inspector: Furderer

Facility: SOCF
Date: 4-4-11

AREA INSPECTED: HOUSING

HOUSING UNIT: K-3

		COMMENTS
1. Do living areas appear clean?	YES <input type="radio"/> NO <input checked="" type="radio"/>	
2. How many toilets are inoperative?	one	- cell 63 - work order filled out
3. How often are toilet facilities sanitized?		- inmates can clean daily
4. Is soap available in each bathroom?	YES <input checked="" type="radio"/> NO <input type="radio"/>	
5. Do shower facilities appear to be clean?	YES <input checked="" type="radio"/> NO <input type="radio"/>	
6. How often are shower facilities cleaned?	daily	
7. What cleaning materials are used to clean shower facilities?	- disinfectant for stainless - window cleaner	
8. What is the room temperature?		- do not keep a log
9. Are cleaning materials kept secure?	YES <input checked="" type="radio"/> NO <input type="radio"/>	
10. Is the CIIC memo posted?	YES <input checked="" type="radio"/> NO <input type="radio"/>	- on TVs - paper on board too
11. Are the Commissary, programs, and library schedules posted?	YES <input checked="" type="radio"/> NO <input type="radio"/>	- on TVs
12. Are kites available on the unit?	YES <input checked="" type="radio"/> NO <input type="radio"/>	
13. Are informal complaint forms available on the unit?	YES <input checked="" type="radio"/> NO <input type="radio"/>	
14. How many shakedowns are performed on each shift?	three	
15. Are cell windows clear of obstruction? / Are views of beds in dorms obstructed?	YES <input checked="" type="radio"/> NO <input type="radio"/>	

CIIC Report: The Southern Ohio Correctional Facility (SOCF) 87

Inspector: Furderer

Facility: SOCF

Date: 4-4-11

K3

16. Is the atmosphere of the unit calm or disruptive?	loud	- loud - active
17. Are officers performing regular security checks?	<input checked="" type="radio"/> YES NO	
18. Are laundry facilities operational?	<input checked="" type="radio"/> YES NO	- Centralized
19. Are lights turned on all night?	YES <input checked="" type="radio"/> NO	- dimmed at night

ADDITIONAL COMMENTS (including inmate communication):

- a lot of inmates had ropes in their cells
 - inmate communication
 - they removed light switches from cells

CIIC Report: The Southern Ohio Correctional Facility (SOCF) 88

Inspector: Jackson

Facility: SOCF
Date: 7-4-11

AREA INSPECTED: HOUSING

HOUSING UNIT: K-4

			COMMENTS
1. Do living areas appear clean?	YES	NO	cluttering cells by inmates
2. How many toilets are inoperative?	none		reported
3. How often are toilet facilities sanitized?	once a week daily		toilet brush, chemicals clean when asked to clean
4. Is soap available in each bathroom?	<input checked="" type="radio"/> YES	NO	State issued
5. Do shower facilities appear to be clean?	<input checked="" type="radio"/> YES	NO	little mildew
6. How often are shower facilities cleaned?	daily		
7. What cleaning materials are used to clean shower facilities?	yes		chemicals + water mix
8. What is the room temperature?	72°		felt warm and musty
9. Are cleaning materials kept secure?	<input checked="" type="radio"/> YES	NO	
10. Is the CIIC memo posted?	<input checked="" type="radio"/> YES	NO	TV Monitors
11. Are the Commissary, programs, and library schedules posted?	YES	<input checked="" type="radio"/> NO	
12. Are kites available on the unit?	<input checked="" type="radio"/> YES	NO	
13. Are informal complaint forms available on the unit?	<input checked="" type="radio"/> YES	NO	
14. How many shakedowns are performed on each shift?			twice per shift
15. Are cell windows clear of obstruction? / Are views of beds in dorms obstructed?	<input checked="" type="radio"/> YES	NO	Some inmates lined blankets over cell doors

CIIC Report: The Southern Ohio Correctional Facility (SOCF) 89

Inspector: Jackson

Facility: SOCF
Date: 4-4-11

16. Is the atmosphere of the unit calm or disruptive?	<i>attractive crowdy</i>		
17. Are officers performing regular security checks?	<input checked="" type="radio"/> YES	<input type="radio"/> NO	<i>once every 30 minutes</i>
18. Are laundry facilities operational?	<input type="radio"/> YES	<input type="radio"/> NO	<i>laundry is in the Quartermaster</i>
19. Are lights turned on all night?	<input checked="" type="radio"/> YES	<input type="radio"/> NO	<i>Nightlight on Range & Cell Nightlights</i>

ADDITIONAL COMMENTS (including inmate communication):

*\$- Staff jump on inmates a lot when people/ Committee
weren't looking.
SOCF was better back before the riot.*

*\$- Reception of TV's, except the ones in the
front*

CIIC Report: The Southern Ohio Correctional Facility (SOCF) 90

Inspector: Furderer

Facility: SOCF
Date: 4-4-11

AREA INSPECTED: HOUSING

HOUSING UNIT: K5 (RTU)

		COMMENTS
1. Do living areas appear clean?	<input checked="" type="radio"/> YES NO	
2. How many toilets are inoperative?	two	- inmate clogged cell 9 and it blocked 10 as well
3. How often are toilet facilities sanitized?	daily	- inmates can clean at any time
4. Is soap available in each bathroom?	<input checked="" type="radio"/> YES NO	- everyone gets one hygiene kit per week
5. Do shower facilities appear to be clean?	<input checked="" type="radio"/> YES NO	
6. How often are shower facilities cleaned?	daily	
7. What cleaning materials are used to clean shower facilities?	- disinfectant - window cleaner	
8. What is the room temperature?		- don't keep log
9. Are cleaning materials kept secure?	<input checked="" type="radio"/> YES NO	
10. Is the CIIC memo posted?	<input checked="" type="radio"/> YES NO	- on TVs
11. Are the Commissary, programs, and library schedules posted?	<input checked="" type="radio"/> YES NO	- on TVs
12. Are kites available on the unit?	<input checked="" type="radio"/> YES NO	
13. Are informal complaint forms available on the unit?	<input checked="" type="radio"/> YES NO	
14. How many shakedowns are performed on each shift?	three each shift	
15. Are cell windows clear of obstruction? / Are views of beds in dorms obstructed?	<input checked="" type="radio"/> YES NO	

CIIC Report: The Southern Ohio Correctional Facility (SOCF) 91

Inspector: Furderer
K S (RTU)

Facility: SOCF
 Date: 4-4-11

16. Is the atmosphere of the unit calm or disruptive?	Calm	
17. Are officers performing regular security checks?	<input checked="" type="radio"/> YES NO	
18. Are laundry facilities operational?	<input checked="" type="radio"/> YES NO	-Centralized
19. Are lights turned on all night?	YES <input checked="" type="radio"/> NO	-dimmed at night

ADDITIONAL COMMENTS (including inmate communication):

(This area is currently blank for additional comments.)

CIIC Report: The Southern Ohio Correctional Facility (SOCF) 92

Inspector: Jackson

Facility: SOCF
Date: 4-4-11

AREA INSPECTED: HOUSING

HOUSING UNIT: K-6 (GP)

		COMMENTS
1. Do living areas appear clean?	YES NO	Inmate cells were cluttered
2. How many toilets are inoperative?	None	
3. How often are toilet facilities sanitized?		daily
4. Is soap available in each bathroom?	<input checked="" type="radio"/> YES NO	
5. Do shower facilities appear to be clean?	<input checked="" type="radio"/> YES NO	
6. How often are shower facilities cleaned?	yes	daily
7. What cleaning materials are used to clean shower facilities?	yes	chemicals & water diluted
8. What is the room temperature?	68-72°	
9. Are cleaning materials kept secure?	<input checked="" type="radio"/> YES NO	
10. Is the CIIC memo posted?	<input checked="" type="radio"/> YES NO	
11. Are the Commissary, programs, and library schedules posted?	<input checked="" type="radio"/> YES NO	
12. Are kites available on the unit?	<input checked="" type="radio"/> YES NO	
13. Are informal complaint forms available on the unit?	<input checked="" type="radio"/> YES NO	
14. How many shakedowns are performed on each shift?	daily	each shift
15. Are cell windows clear of obstruction? / Are views of beds in dorms obstructed?	<input checked="" type="radio"/> YES <input checked="" type="radio"/> NO	Clear

CIIC Report: The Southern Ohio Correctional Facility (SOCF) 93

Inspector: Jackson

Facility: SOCF
Date: 4-4-11

16. Is the atmosphere of the unit calm or disruptive?	<i>Calm</i>	<i>Compared to K-8</i>
17. Are officers performing regular security checks?	<input checked="" type="radio"/> YES NO	
18. Are laundry facilities operational?	YES NO	
19. Are lights turned on all night?	YES NO	

ADDITIONAL COMMENTS (including inmate communication):

* Institutional Separations

++ Burton (420707) ++

* - November got Flu shot (11-15-2010)

↳ wrote up nurse for not returning on pill call

↳ Started having flu-like symptoms

↳ Blood test came negative

↳ Doctor watched test results at 100% HIV on the computer, but the Doctor changed the to a "no"

↳ can't tell anybody, worried about law suit

↳ Just let ~~ambien~~ die

~~the~~

} Ast. Chief Inspector

* - More effective programming, inmates have to wait several years

* - January 20, 2011, Stabbed by another inmate CIO's didn't respond

CIIC Report: The Southern Ohio Correctional Facility (SOCF) 94

Inspector: Jachson

Facility: SOCF
Date: 7-9-11

AREA INSPECTED: HOUSING

HOUSING UNIT: K-8 (4A/600)

		COMMENTS
1. Do living areas appear clean?	<input checked="" type="radio"/> YES NO	However, inmate items on floor in cell
2. How many toilets are inoperative?	None	
3. How often are toilet facilities sanitized?	yes	weekly and as needed
4. Is soap available in each bathroom?	<input checked="" type="radio"/> YES NO	
5. Do shower facilities appear to be clean?	<input checked="" type="radio"/> YES NO	Lights - note lights from
6. How often are shower facilities cleaned?	yes	daily
7. What cleaning materials are used to clean shower facilities?	mixture	chemicals + water
8. What is the room temperature?	62-72°	
9. Are cleaning materials kept secure?	<input checked="" type="radio"/> YES NO	
10. Is the CIIC memo posted?	<input checked="" type="radio"/> YES NO	
11. Are the Commissary, programs, and library schedules posted?	<input checked="" type="radio"/> YES NO	
12. Are kites available on the unit?	<input checked="" type="radio"/> YES NO	
13. Are informal complaint forms available on the unit?	<input checked="" type="radio"/> YES NO	
14. How many shakedowns are performed on each shift?	yes - 3x every shift	Random 3 cells per shift
15. Are cell windows clear of obstruction? / Are views of beds in dorms obstructed?	<input checked="" type="radio"/> YES NO	

CIIC Report: The Southern Ohio Correctional Facility (SOCF) 95

Inspector: Jackson

Facility: SOCF
Date: 4-4-11

16. Is the atmosphere of the unit calm or disruptive?	<i>disruptive at times</i>	
17. Are officers performing regular security checks?	<input checked="" type="radio"/> YES NO	<i>every 30 minutes</i>
18. Are laundry facilities operational?	<input checked="" type="radio"/> YES NO	
19. Are lights turned on all night?	YES <input checked="" type="radio"/> NO	
ADDITIONAL COMMENTS (including inmate communication):		
<p><i>* - Bad reception on TV's (only get certain channels) ↳ don't get institutional movie channel ↳ channel 2</i></p> <p><i>* - Grandmother</i></p> <p><i>* - ICR for Harassment -- Sexual Harassment based on search waiting on a response from IIS Don't have the a response from Supervisor <u>513730</u></i></p>		

CIIC Report: The Southern Ohio Correctional Facility (SOCF) 96

Inspector: Furderer

Facility: SOCF
Date: 4-4-11

AREA INSPECTED: HOUSING

HOUSING UNIT: K7

		COMMENTS
1. Do living areas appear clean?	<input checked="" type="radio"/> YES NO	
2. How many toilets are inoperative?	none	- not sure - no one has complained
3. How often are toilet facilities sanitized?	daily	
4. Is soap available in each bathroom?	<input checked="" type="radio"/> YES NO	
5. Do shower facilities appear to be clean?	<input checked="" type="radio"/> YES NO	
6. How often are shower facilities cleaned?	daily	
7. What cleaning materials are used to clean shower facilities?	- general disinfectant - window cleaner	
8. What is the room temperature?		- do not keep a log
9. Are cleaning materials kept secure?	<input checked="" type="radio"/> YES NO	
10. Is the CIIC memo posted?	<input checked="" type="radio"/> YES NO	
11. Are the Commissary, programs, and library schedules posted?	<input checked="" type="radio"/> YES NO	
12. Are kites available on the unit?	<input checked="" type="radio"/> YES NO	
13. Are informal complaint forms available on the unit?	<input checked="" type="radio"/> YES NO	
14. How many shakedowns are performed on each shift?	three per shift	
15. Are cell windows clear of obstruction? / Are views of beds in dorms obstructed?	<input checked="" type="radio"/> YES NO	

CIIC Report: The Southern Ohio Correctional Facility (SOCF) 97

Inspector: Furderer

Facility: SOCF
Date: 4-4-11

<p>16. Is the atmosphere of the unit calm or disruptive?</p>	<p>Calm</p>	
<p>17. Are officers performing regular security checks?</p>	<p><input checked="" type="radio"/> YES <input type="radio"/> NO</p>	
<p>18. Are laundry facilities operational?</p>	<p><input checked="" type="radio"/> YES <input type="radio"/> NO</p>	
<p>19. Are lights turned on all night?</p>	<p>YES <input checked="" type="radio"/> NO</p>	<p>- dim at night</p>
<p>ADDITIONAL COMMENTS (including inmate communication):</p>		
<p>- inmate communication</p> <ul style="list-style-type: none"> - Can't do personal laundry due to theft - laundry comes back wet - took wash tubs away so we can't do it laundry in blocks 		

CIIC Report: The Southern Ohio Correctional Facility (SOCF) 98

Inspector: Jackson

Facility: SOCF
Date: 9-4-11

AREA INSPECTED: RECREATION *K-side*

		COMMENTS
1. Are programs available to all inmates?	<input checked="" type="radio"/> YES NO	
2. How many staff are assigned to supervise inmates?	<i>at least 2</i>	<i>No less than 2 officers</i>
3. Are programs posted for inmate information?	<input checked="" type="radio"/> YES NO	
4. Is equipment cleaned and sanitized on a regular basis?	<input checked="" type="radio"/> YES NO	
5. Are cleaning materials kept secure?	<input checked="" type="radio"/> YES NO	<i>locked gate back closet</i>
6. Does recreation equipment appear to be in good working order?	<input checked="" type="radio"/> YES NO	<i>pull-up/dip bars medicine balls</i>
7. How many inmate workers are assigned to the recreation department?	<i>5</i>	
8. Are inmate workers trained and is this documented?	<input checked="" type="radio"/> YES NO	<i>5 on staff in job skill ready program</i>
9. Is a kite log maintained?	<input checked="" type="radio"/> YES NO	<i>usually done by Mental Health Sec.</i>
10. Are programs available for inmates with disabilities?	<input checked="" type="radio"/> YES NO	<i>yes, particularly RTV inmates</i>
ADDITIONAL COMMENTS (including description of recreational areas):		
<i>Indoor Gym</i>		
<i>- Basketball Court (Basketball, Kickball, Soccer leagues)</i>		
<i>- Bleachers</i>		
 <i>Outdoor :</i>		
<i>Whiffle ball, Walkin track, Frisbee, handball, Flag football, Basketball</i>		
<i>pull-up & dip stations</i>		
<i>Music Program, Karaoke, Horticulture</i>		
<i>- Watch videos</i>		

CIIC Report: The Southern Ohio Correctional Facility (SOCF) 99

Inspector: GTG

Facility: SOCF
Date: 4/4/11

INFIRMARY:

1	Does the overall appearance of the infirmary look clean? (exam rooms, holding cells, crisis cells)	<input checked="" type="radio"/> YES	NO	
1a	Ask to see documentation of cleaning schedule for all functional areas.			provided - CD signoff on porters work
1b	Document the number of exam rooms, holding cells and crisis cells.			MAIN INFIRMARY 311012
1c	Staff uses personal protective equipment (gloves, masks, etc) to control risks for acquiring and transmitting infections. 68-MED-18 (Observe staff if possible)	<input checked="" type="radio"/> YES	NO	Observed nurse performing examination on <input checked="" type="radio"/> P KW OBSERVED USING GLOVES DURING physical exam of <input checked="" type="radio"/> FRANK
1d	Clearly marked sharps containers and other bio-medical waste containers are present in all exam rooms (68-MED-18, 10-SAF-13). (Look in all exam rooms. If possible, observe where waste is stored prior to disposal.)	<input checked="" type="radio"/> YES	NO	portable on carts in main infirmaries - STORED IN SECURED AREA OF PHARMACY
1e	Inmate porters are trained to use personal protective equipment to clean up and dispose of infectious waste. (10-SAF-13)	<input checked="" type="radio"/> YES	NO	
2	All medical and dental equipment is operational? (Are there any broken pieces?)	<input checked="" type="radio"/> YES	NO	
2a	Work areas of the infirmary appear organized? (Observe for cluttered exam rooms etc.)	<input checked="" type="radio"/> YES	NO	
3	Medical records are kept in a secure location and handled to ensure confidentiality. (Observe for records that are kept in open areas that could be picked up by anyone).	<input checked="" type="radio"/> YES	NO	
3a	Does each inmate have individual medical record and health risk assessment completed? (If not what is the timeline to complete this? How many have not been completed?)	<input checked="" type="radio"/> YES	NO	ALL HAVE MR/HRA

CIIC Report: The Southern Ohio Correctional Facility (SOCF) 100

Inspector: CK

Facility: SOCF

Date: 4/4/11

3b	How frequently are patient records audited for accuracy and errors or missing data? (Ask to see the log of records audits)	YES	NO	CQI process - performed monthly - if problems occurred performed more frequently
3c	How frequently is staff training conducted related to patterns of errors identified by records audits? (What is the process?)			- whenever identified or if it comes up - as it is found - correct staff accordingly
3d	Targets for improving patient care are set for staff to achieve?	<input checked="" type="radio"/>	NO	ix completing forms correctly to insure compliance
3e	How often is staff training conducted on new protocols and procedures relevant to improving patient care?			when new policy comes out it is addressed - they must sign they have read them - take tests administered by CQI
4	Health Care supervisors work late shifts periodically to monitor infirmary operations. (How often)	<input checked="" type="radio"/>	NO	one RND works 2-10 w/ second shift - 20yrs of experience
4a	What is the average amount of overtime of nursing staff per month?			100 hrs for 3 months
4b	What steps are taken to address staff burnout? (Peer support groups, counseling, etc.)			- nothing formally, on workload basis communicate thru each other
4c	What is the annual average turnover of nurses and other medical staff at the institution?			very low, no percentage available - most staff have worked in prison for extended period of time, 10yrs +
5	How many inmates are enrolled in chronic care clinics at the institution? (68-MED-19)			484 pt in 764 clinics
5a	What is the backlog of inmates enrolled in chronic care clinics? (Ask why there is a backlog)			no inmate backlog currently
5b	What is the plan to address any backlog?			NA
5c	How many referrals to outside medical providers is pending approval? (Ask what the average amount of time it takes for approval.)			- 14 as of 3/22/11 - within a few days max generally thru CMO @ rec, must approve
6	Information is provided to inmates on how and when to seek health care services during orientation? (68-MED-01)	<input checked="" type="radio"/>	NO	- Documentation provided during orientation, where/ how to sign up for use - a lot of care reported to blocks

CIIC Report: The Southern Ohio Correctional Facility (SOCF) 101

Inspector: BTJ

Facility: SOCF

Date: 4/24/11

6a	An ongoing teaching program to promote health and hygiene practices is provided to inmates by staff? (If not, why not?) (68-MED-01)	YES	NO	Annual health fair - RNs perform teaching one on one during encounters - special pops meet w/ RN staff - Diet Tech educates about commissary purchases - security challenges associated w/ socf
6b	Health education literature is available for inmates to review regarding health related matters in the infirmary and the library?	<input checked="" type="radio"/> YES	NO	14 CHRONIC CARE RECEIVE INFO CAN GET PAMPHLETS
6c	Inmates with special needs, infectious diseases, and other health needs are provided counseling and education as needed? (Type?)	<input checked="" type="radio"/> YES	NO	10 NURSES provides outpatient education
7	There is an emergency management plan in place to deal with either emergencies or disasters to address larger than normal amounts of inmate/staff injuries? (Individual medical emergency, tornado, fire, or mass disturbances.)	<input checked="" type="radio"/> YES	NO	TRUCK CHARTS FIRST AND ALL LOCATIONS IDENTIFIED
7a	How often is medical staff trained on the emergency management plan?			- During inservice training once a year

- 9 mini infirmaries in J, K, L

- Going to do more one on one education, IDing inmates w/ problems and putting them aside to listen to problems and needs - address them to

CIIC Report: The Southern Ohio Correctional Facility (SOCF) 102

Inspector: Robison

Facility: SOCF
Date: 4/5/11

AREA INSPECTED: LIBRARY/LAW LIBRARY

		COMMENTS
1. Does the area appear to be clean and well-maintained?	<input checked="" type="radio"/> YES <input type="radio"/> NO	very!
2. Are DRC Administrative Rules (5120-9 series) available to inmates upon request?	<input type="radio"/> YES <input type="radio"/> NO	IMs have own set @ orientation
3. How many computers/typewriters are available for inmates' use?	6+	word processor
4. How often are computers/typewriters cleaned?	regular schedule	cleaned daily: Tues, am Thurs, am librarian duties done
5. Are library services available daily, including weekends and evenings?	<input checked="" type="radio"/> YES <input type="radio"/> NO	
6. Does the library participate in inter-library loan programs?	<input checked="" type="radio"/> YES <input type="radio"/> NO	
7. How many inmate workers are assigned to the library/law library?		4/day
8. Are inmates housed in special management areas permitted to use the law library? How?	<input checked="" type="radio"/> YES <input type="radio"/> NO	op three paralegal
9. Is a kite log maintained?	<input checked="" type="radio"/> YES <input type="radio"/> NO	paralegal 8-11 AM
10. Are there separate sections for African-American/Hispanic/ethnic literature?	<input checked="" type="radio"/> YES <input type="radio"/> NO	*compared minimal
11. Are forms on hand to allow inmates to file court actions?	<input checked="" type="radio"/> YES <input type="radio"/> NO	paralegal
12. How often are new materials added to the library?		Magazines regularly Books are by donation (mostly) Buy store & library
ADDITIONAL COMMENTS (including library/law library schedule): Open whole block 1 @ a time (~ 2 hrs) aft 6 pm limit of 40 IM @ one time some ethnic books - less than one shelf 'Ard' one set - "Negro History" religion section law section section - had laptop no longer; now only PC 1M law assistant Paralegal (1) Each block gets (~ 1 hr almost each day)		

cards of books
Aug
August!

(7)

CIIC Report: The Southern Ohio Correctional Facility (SOCF) 103

Inspector: Robison ^{Parole} David Crad, Apr. Facility: SOCF
Holly Shumaker, IDP Fac Date: 4/5/11

PROGRAM NAME: ADAPT Cognitive Behavioral Treatment Program
(for drug and alcohol abuse)

		COMMENTS
1. Are programs available to all inmates?	<input checked="" type="radio"/> YES <input type="radio"/> NO <u>apply - 1M request</u>	<u>ea. 1M has own workbook</u>
2. How many students are in the observed class?	13	
3. What is the student/teacher ratio?	13/1	
4. Are instructional materials provided to every student?	<input checked="" type="radio"/> YES <input type="radio"/> NO	<u>Change Company</u>
5. Are instructional materials copyrighted or teacher-made?	<u>Change Company</u>	<u>Orientation ^{work} book - 1st session</u>
6. Do students have use of technology as part of the observed program?	YES <input checked="" type="radio"/> NO	<u>not needed for session</u>
7. Was the teacher using technology during the observed program?	YES <input type="radio"/> NO	<u>not needed</u>
8. Was the technology functioning correctly?	YES <input checked="" type="radio"/> NO	NA
9. Was the classroom appropriate in size, safety, acoustics, and lighting?	<input checked="" type="radio"/> YES <input type="radio"/> NO	<u>open space, uncrowded, light, bright, good ventilation</u>
10. Is security staff on duty during programming?	<input checked="" type="radio"/> YES <input type="radio"/> NO	<u>in open area visible to room & group</u>
11. Is the teacher using a lecture style of instruction, question/answer, or group discussion?		<u>facilitation through multitude of questions</u>
12. Do students appear to be responsive and engaged in the lesson?	<input checked="" type="radio"/> YES <input type="radio"/> NO	<u>very attentive</u>

ADDITIONAL COMMENTS:
- very pleasant room, paint nice / "new"
chairs in good condition, seemed 'new.'

CIIC Report: The Southern Ohio Correctional Facility (SOCF) 104

Inspector: Robison *Brian Nolan
Melissa Foster*

Facility: SOCF
Date: 4/5/11

PROGRAM NAME: Thinking for a Change - Session Cognitive Self Change

		COMMENTS
1. Are programs available to all inmates?	<input checked="" type="radio"/> YES <input type="radio"/> NO	IM apply/request
2. How many students are in the observed class?	5	
3. What is the student/teacher ratio?	5/2	
4. Are instructional materials provided to every student?	<input checked="" type="radio"/> YES <input type="radio"/> NO	worksheets as homework
5. Are instructional materials copyrighted or teacher-made?		
6. Do students have use of technology as part of the observed program?	<input checked="" type="radio"/> YES <input checked="" type="radio"/> NO	NA
7. Was the teacher using technology during the observed program?	<input checked="" type="radio"/> YES <input checked="" type="radio"/> NO	NA
8. Was the technology functioning correctly?	<input checked="" type="radio"/> YES <input checked="" type="radio"/> NO	NA
9. Was the classroom appropriate in size, safety, acoustics, and lighting?	<input checked="" type="radio"/> YES <input type="radio"/> NO	bright, clean, tables & chairs
10. Is security staff on duty during programming?	<input checked="" type="radio"/> YES <input type="radio"/> NO	in open adjacent area
11. Is the teacher using a lecture style of instruction, question/answer, or group discussion?		all grp. discussion
12. Do students appear to be responsive and engaged in the lesson?	<input checked="" type="radio"/> YES <input type="radio"/> NO	
ADDITIONAL COMMENTS:		

CIIC Report: The Southern Ohio Correctional Facility (SOCF) 105

Inspector: Jackson

Facility: SOCF
Date: 9-4-11

AREA INSPECTED: FOOD SERVICES

			COMMENTS
1. Does the area appear clean?	<input checked="" type="radio"/> YES	<input type="radio"/> NO	
2. Does the equipment appear to be clean?	<input checked="" type="radio"/> YES	<input type="radio"/> NO	were in process of cleaning during inspection
3. Are there any standing puddles of water on the ground? Is there ice on the floor of coolers?	<input checked="" type="radio"/> YES	<input checked="" type="radio"/> NO	
4. Is a chit system used to issue tools to inmate workers?	<input checked="" type="radio"/> YES	<input type="radio"/> NO	
5. Is the quantity of the food served according to the menu?	<input checked="" type="radio"/> YES	<input type="radio"/> NO	
6. Are all inmate workers trained regarding proper hygiene?	<input checked="" type="radio"/> YES	<input type="radio"/> NO	
7. Is soap available in the inmate/staff bathroom?	<input checked="" type="radio"/> YES	<input type="radio"/> NO	
8. Are all inmate workers and staff wearing hair nets?	<input checked="" type="radio"/> YES	<input type="radio"/> NO	
9. Are all inmate workers and staff handling food wearing gloves?	<input checked="" type="radio"/> YES	<input type="radio"/> NO	
10. How many inmate workers are assigned to the food services department?	240		only can have 44 at a time
11. Are all inmate workers trained on proper handling of equipment?	<input checked="" type="radio"/> YES	<input type="radio"/> NO	
12. Are knives issued according to procedure?	<input checked="" type="radio"/> YES	<input type="radio"/> NO	Class A tool Room Separate cabinet -
13. Are inmates supervised while using knives?	<input checked="" type="radio"/> YES	<input type="radio"/> NO	FS Coordinator w/ Key to
14. Is fire equipment operational and inspected according to schedule?	<input checked="" type="radio"/> YES	<input type="radio"/> NO	
15. Is stored food wrapped and dated?	<input checked="" type="radio"/> YES	<input type="radio"/> NO	
16. Are containers of food stored off of the ground?	<input checked="" type="radio"/> YES	<input type="radio"/> NO	

Strapped to table in work area.

- A lot of inmates don't eat vegetables
- Inmates will have option of eating vegetables test for a month

Inspector: Jocham

Facility: SOCF
Date: 4-4-11

17. Is a safe distance maintained from the top of the stored food to the ceiling?	<input checked="" type="radio"/> YES	NO	
18. Are there any current pest issues?	YES	<input checked="" type="radio"/> NO	Pest control every wednesday
19. What is the date of the last inspection by health inspectors? Did the facility pass?	Feb. 1, 2010		pass
20. How often is the cooking equipment sanitized?	every meal		
21. Is a kite log maintained?	<input checked="" type="radio"/> YES	NO	
22. Are all chemicals secured?	<input checked="" type="radio"/> YES	NO	
23. Are dishes/utensils washed/rinsed at appropriate temperatures (was 150 degrees/rinse 180 degrees)?	<input checked="" type="radio"/> YES	NO	Washed 150° Rinse - (80 degrees)
24. Have there been any recent concerns regarding inmate health issues due to food?	YES	<input checked="" type="radio"/> NO	
25. Is the trash dock free of odors, loose garbage bags, and bugs?	<input checked="" type="radio"/> YES	NO	
26. Do the coolers and freezers appear orderly and clean?	<input checked="" type="radio"/> YES	NO	
27. Are trays scraped in a different area from the food serving line?	<input checked="" type="radio"/> YES	NO	
ADDITIONAL COMMENTS: - Maintenance handled quickly (Maintenance assigned to area) - Meals prepared 72 hours in advance - Test trays in vegetable freezer - 72 hours - 3 Freezers, 8 coolers - No incentive programs - Food portions biggest concern - No spill-proof pails Deliveries (4x per week) Outside warehouse - Frozen + Canned Goods - All items to warehouse 1st			

(Mint Thru) Dairy, Frozen Foods / canned items, Non Breaded
 (Thru) eggs

- (Mint Thru) Meat delivered

Inspector: Furderer

Facility: SOCF
Date: 4-4-11 and 4-5-11

Inmate Communication

- retaliation for voicing complaints
- staff jump on us
- can't get a grievance form
- property comes up missing
- mail is not being sent out
- chemicals are watered down
- food portions are small
- officers need to take diversity training
- need more access to the law library
- TVs are blurry
- DRC should implement a visitor transportation system

Staff Communication

- took away laundry tubs due to ACA standard
 - will be replacing washer and dryer in centralized laundry room
- equipping staff with OC has reduced lost time
 - numbers are down with use of force
- We do not tolerate officers harassing inmates
 - we will hold staff accountable for this
- recently hired a lot of staff on second shift

CIIC Report: The Southern Ohio Correctional Facility (SOCF) 108

Inspector: Furderer

Facility: SOCF
Date: 4-5-11

AREA INSPECTED: OPI

		COMMENTS
1. What OPI shops are located at this facility?	Shoe	
2. How many inmates work in OPI at this institution?	13	- TO calls for 21
3. How many staff members supervise the inmates during the hours of operation?	two	- one OPI Manager - one officer
4. Are there any certifications available for this shop?	YES <input checked="" type="radio"/> NO	
5. What is the average hourly/monthly wage?	50 per month	
6. Are there any maintenance issues with the equipment?	YES <input checked="" type="radio"/> NO	
7. How often is equipment checked per safety standards?	monthly. while they are working	
8. Are inmates searched before and after their shifts?	<input checked="" type="radio"/> YES <input type="radio"/> NO	- inmates are searched after, but not before
9. Have you had any inventory issues?	YES <input checked="" type="radio"/> NO	
10. Do you feel production could be increased/decreased/or remain the same?	Shop is closing	
11. How could your shop be more efficient/profitable?	not sure	
12. How could OPI be more efficient/profitable?	not sure	

ADDITIONAL COMMENTS (including description of OPI area):

- shop is closing probably around June or July
- they had issues of receiving shoes from company on time
- institutions were tired of waiting on shoes
- it is cheaper to import shoes
- possibly use area for recycling
- potential idea of partnership with Kenworth in Chillicothe
- wiring harness for trucks
- can ~~to~~ finish 25 dozen per day
- 17 dollars per pair
- started cutting circles for buffer pads and scratch pads

GLOSSARY OF TERMS

A

- Administrative Assistant (AA) – Staff member who is an assistant to the Warden and typically responsible for reviewing RIB (Rules Infraction Board) decisions and RIB appeals.
- Adult Basic Education (ABE)/Literacy – Literacy classes are for student with reading levels at 226 and below the CASAS. The ABE/Literacy Unit consist of two afternoon sessions. Students attend school approximately 1 ½ hours each day on Monday – Thursday. Students work individually or in small groups with tutors and focus on improving their reading and math skills. All tutors in the ABE/Literacy Unit are certified through a 10 hour training course.

B

- Brunch – Served on weekends as a cost savings initiative.
- Bureau of Classification – Office located at DRC Central Office responsible with the ultimate authority for inmate security levels, placement at institutions, as well as transfers.
- Bureau of Medical Services – Office located at DRC Central Office responsible for direct oversight of medical services at each institution.
- Bureau of Mental Health Services – Office located at DRC Central Office responsible for direct oversight of Mental Health Services at each institution.

C

- Case Manager – Staff member responsible for assisting inmates assigned to their case load and conducting designated core and authorized reentry programs.
- Cellie/Bunkie – An inmate’s cellmate or roommate.
- Chief Inspector – Staff member at DRC Central Office responsible for administering all aspects of the grievance procedure for inmates, rendering dispositions on inmate grievance appeals as well as grievances against the Wardens and/or Inspectors of Institutional Services.
- Classification/Security Level – System by which inmates are classified based on the following: current age; seriousness of the crime; prior offenses; most recent violence (not including the current offense); gang activity before going to prison; and present and past escape attempts.
- Close Security – See Level 3
- Computer Voice Stress Analysis (CVSA) – A device, which electronically detects, measures, and charts the stress in a person’s voice following a pre-formatted questionnaire. Used as a truth seeking device for investigations.
- Conduct Report/Ticket – Document issued to inmate for violating a rule.
- Contraband – items possessed by an inmate which, by their nature, use, or intended use, pose a threat to security or safety of inmates, staff or public, or disrupt the orderly operation of the facility. items possessed by an inmate without permission and the location in which these items are discovered is improper; or the quantities in which an allowable item is possessed is prohibited; or the manner or method by which the item is obtained was improper; or an allowable item is possessed by an inmate in an altered form or condition.

D

- Deputy Warden of Operations (DWO) – Staff member at each institution in charge of monitoring the Major, custody staff, the Unit Management Administrator, Unit Managers, Case Managers, and the locksmith. Other areas include count office, mail/visiting, Rules Infraction Board, segregation unit, and recreation. The Deputy Warden of Operations is also responsible for reviewing use of force reports and referring them to a Use of Force Committee when necessary for further investigation.
- Deputy Warden of Special Services (DWSS) – Staff member at each institution in charge of monitoring education, the library, inmate health services, recovery services, mental health services, religious services, Ohio Penal Industries, and food service.
- Disciplinary Control (DC) – The status of an inmate who was found guilty by the Rules Infraction Board and his or her penalty is to serve DC time. An inmate may serve up to 15 days in DC.

F

- Food Service Administrator – An employee within the Office of Administration Services educated in food service management and preparation, to manage DRC food service departments.

G

- GED/PRE-GED – Pre-GED classes are for those who have a reading score between a 227 through 239 on level C or higher of the CASAS test. GED classes are for those who have a reading score of 240 on level C or higher on the CASAS test. Students attend class 1 ½ hours each day, Monday – Thursday. Students study the five subjects measured by the GED. In addition to class work, students are given a homework assignment consisting of a list of vocabulary words to define and writing prompt each week. All GED and Pre-GED tutors are certified through a 10-hour training course.
- General Population (GP) – Inmates not assigned to a specialized housing unit.

H

- Health Care Administrator (HCA) – The health care authority responsible for the administration of medical services within the institution. This registered nurse assesses, directs, plans, coordinates, supervises, and evaluates all medical services delivered at the institutional level. The HCA interfaces with health service providers in the community and state to provide continuity of care.
- Hearing Officer – The person(s) designated by the Managing Officer to conduct an informal hearing with an inmate who received a conduct report.
- Hooch – An alcoholic beverage.

I

- Industrial and Entertainment (I and E) Funds – Funds created and maintained for the entertainment and welfare of the inmates.
- Informal Complaint Resolution (ICR) – The first step of the Inmate Grievance Procedure (IGP). Inmates submit ICRs to the supervisor of the staff member who is the cause of the complaint. Staff members are to respond within seven calendar days. Timeframe may be waived for good cause.

- Inmate Grievance Procedure (IGP) – A three step process whereby inmates may document and report concerns, problems, or issues.
- Inspector of Institutional Services (IIS) – Staff person at the institution in charge of facilitating the inmate grievance procedure, investigating and responding to inmate grievances, conducting regular inspections of institutional services, serving as a liaison between the inmate population and institutional personnel, reviewing and providing input on new or revised institutional policies, procedures and post orders, providing training on the inmate grievance procedure and other relevant topics, and any other duties as assigned by the Warden or Chief Inspector that does not conflict with facilitating the inmate grievance procedure or responding to grievances.
- Institutional Separation – An order wherein two or more inmates are not assigned to general population in the same institution due to a concern for the safety and security of the institution, staff, and/or other inmates.
- Intensive Program Prison (IPP) – Refers to several ninety-day programs, for which certain inmates are eligible, that are characterized by concentrated and rigorous specialized treatment services. An inmate who successfully completes an IPP will have his/her sentence reduced to the amount of time already served and will be released on post-release supervision for an appropriate time period.
- Interstate Compact – The agreement codified in ORC 5149.21 governing the transfer and supervision of adult offenders under the administration of the National Interstate Commission.

K

- Kite – A written form of communication from an inmate to staff.

L

- Local Control (LC) – The status of an inmate who was referred to the Local Control Committee by the Rules Infraction Board. The committee will decide if the inmate has demonstrated a chronic inability to adjust to the general population or if the inmate's presence in the general population is likely to seriously disrupt the orderly operation of the institution. A committee reviews the inmate's status every 30 days for release consideration. The inmate may serve up to 180 days in LC.
- Local Separation – An order wherein two or more inmates are not permitted to be assigned to the same living and/or work area, and are not permitted simultaneous involvement in the same recreational or leisure time activities to ensure they are not in close proximity with one another.

N

- Notification of Grievance (NOG) – The second step of the Inmate Grievance Procedure (IGP). The NOG is filed to the Inspector of Institutional Services and must be responded to within 14 calendar days. Timeframe may be waived for good cause.

M

- Maximum Security – See Level 4
- Medium Security – See Level 2

- Mental Health Caseload – Consists of offenders with a mental health diagnosis who receive treatment by mental health staff and are classified as C-1 (SMI) or C-2 (Non-SMI).
- Minimum Security – See Level 1

O

- Ohio Central School System (OCSS) – The school district chartered by the Ohio Department of Education to provide educational programming to inmates incarcerated within the Ohio Department of Rehabilitation and Correction.
- Ohio Penal Industries (OPI) – A subordinate department of the Department of Rehabilitation and Correction. OPI manufactures goods and services for ODRC and other state agencies.

P

- Parent Institution – The institution where an inmate is assigned to after reception and will be the main institution where the inmate serves his or her time. The parent institution is subject to change due to transfers.
- Protective Control (PC) – A placement for inmates whose personal safety would be at risk in the General Population (GP).

R

- Reentry Accountability Plan (RAP) – Plan for inmates, which includes the static risk assessment, dynamic needs assessment, and program recommendations and participation.
- Residential Treatment Unit (RTU) – The Residential Treatment Unit is a secure, treatment environment that has a structured clinical program. All offenders enter at the Crisis and Assessment Level (Level 1). This level is designed to assess conditions and provide structure for the purpose of gaining clinical information or containing a crisis. The disposition of the assessment can be admission to the treatment levels of the RTU, referral to OCF, or referral back to the parent institution.
- Rules Infraction Board (RIB) – A panel of two staff members who determine guilt or innocence when an inmate receives a conduct report or ticket for disciplinary reasons.

S

- Security Control (SC) – The status of an inmate who is pending a hearing by the Rules Infraction Board for a rule violation, under investigation or pending institutional transfer and needs to be separated from the general population. Inmates may be placed in SC for up to seven days. The seven day period can be extended if additional time is needed.
- Security Level/Classification – System by which inmates are classified based on the following: current age; seriousness of the crime; prior offenses; most recent violence (not including the current offense); gang activity before going to prison; and present and past escape attempts.
 - Level 1A Security (Minimum) – The lowest security level in the classification system. Inmates classed as Level 1 have the most privileges allowed. Inmates in Level 1 who meet criteria specified in DRC Policy 53-CLS-03, Community Release Approval Process, may be eligible to work off the grounds of a correctional institution. Level 1A inmates may be housed at a correctional camp with or without a perimeter fence and may work outside the fence under periodic supervision. Level 1A replaces the classification previously known as “Minimum 1 Security.”

- Level 1B Security (Minimum) – The second lowest level in the classification system. Level 1B inmates may be housed at a correctional camp with a perimeter fence and may work outside of the fence under intermittent supervision. However, Level 1B inmates who are sex offenders are not permitted to work or house outside of a perimeter fence. Level 1B inmates may not work off the grounds of the correctional institution. Level 1B replaces the classification previously known as “Minimum 2 Security.”
- Level 2 Security (Medium) – A security level for inmates who are deemed in need of more supervision than Level 1 inmates, but less than Level 3 inmates. Level 2 replaces the classification previously known as “Medium Security.”
- Level 3 Security (Close) – This is the security level that is the next degree higher than Level 2, and requires more security/supervision than Level 2, but less than Level 4. Level 3 replaces the classification previously known as “Close Security.”
- Level 4 Security (Maximum) – This is the security level that is the next degree higher than Level 3, and requires more security/supervision than Level 3, but less than Level 5. It is the security level for inmates whose security classification score at the time of placement indicates a need for very high security. It is also a classification for those who are involved in, but not leading others to commit violent, disruptive, predatory or riotous actions, and/or a threat to the security of the. Level 4 replaces the classification previously known as “Maximum Security.”
- Level 4A Security (Maximum) – A less restrictive privilege level, which inmates may be placed into by the privilege level review committee with the Warden/Designee’s approval, after a review of the inmate’s status in level 4.
- Level 4B Security (Maximum) – The most restrictive privilege level assigned to an inmate classified into level 4.
- Level 5 Security (Supermax) – A security level for inmates who commit or lead others to commit violent, disruptive, predatory, riotous actions, or who otherwise pose a serious threat to the security of the institution as set forth in the established Level 5 criteria. Level 5 replaces the classification previously known as “High Maximum Security.”
- Level 5A Security (Supermax) – A less restrictive privilege level, which inmates may be placed into by the privilege level review committee with the Warden/Designee’s approval, after a review of the inmate’s status in level 5.
- Level 5B Security (Supermax) – The most restrictive privilege level assigned to an inmate classified into level 5.
- Security Threat Group (STG) – Groups of inmates such as gangs that pose a threat to the security of the institution.
- Separation – See Institutional Separation and Local Separation
- Seriously Mentally Ill (SMI) – Inmates who require extensive mental health treatment.
- Shank – Sharp object manufactured to be used as a weapon.
- Special Management Housing Unit (SMHU)/Segregation – Housing unit for those assigned to Security Control, Disciplinary Control, Protective Control, and Local Control.
- Supermax Security – See Level 5

T

- Telemedicine – A two-way interactive videoconferencing system that allows for visual and limited physical examination of an inmate by a physician specialist while the inmate remains at his/her prison setting and the physician specialist remains at the health care facility. It also includes educational and administrative uses of this technology in the support of health care, such as distance learning, nutrition counseling and administrative videoconferencing.
- Transitional Control – Inmates approved for release up to 180 days prior to the expiration of their prison sentence or release on parole or post release control supervision under closely monitored supervision and confinement in the community, such as a stay in a licensed halfway house or restriction to an approved residence on electronic monitoring in accordance with section 2967.26 of the Ohio Revised Code.
- Transitional Education Program (TEP) – Learn skills to successfully re-enter society. Release dated within 90-180 days.

U

- Unit Management Administrator (UMA) – Staff member responsible for overseeing the roles, responsibilities and processes of unit management staff in a decentralized or centralized social services management format. The UMA may develop centralized processes within unit management, while maintaining the unit based caseload management system for managing offender needs. The UMA shall ensure that at least one unit staff member visits the special management areas at least once per week and visits will not exceed seven days in between visits.
- Unit Manager (UM) – Staff member responsible for providing direct supervision to assigned unit management staff and serving as the chairperson of designated committees. Unit Managers will conduct rounds of all housing areas occupied by inmates under their supervision.

W

- Warden – Top administrator at each correctional institution.

Ohio Department of Rehabilitation and Correction Institution Acronyms

Allen Correctional Institution	ACI
Belmont Correctional Institution	BeCI
Chillicothe Correctional Institution	CCI
Correctional Reception Center	CRC
Corrections Medical Center	CMC
Dayton Correctional Institution	DCI
Franklin Pre-Release Center	FPRC
Grafton Correctional Institution	GCI
Hocking Correctional Facility	HCF
Lake Erie Correctional Institution	LaeCI
Lebanon Correctional Institution	LeCI
London Correctional Institution	LoCI
Lorain Correctional Institution	LorCI
Madison Correctional Institution	MaCI
Mansfield Correctional Institution	ManCI

Marion Correctional Institution	MCI
Noble Correctional Institution	NCI
North Central Correctional Institution.....	NCCI
North Coast Correctional Treatment Facility	NCCTF
Northeast Pre-Release Center	NEPRC
Oakwood Correctional Facility.....	OCF
Ohio Reformatory for Women.....	ORW
Ohio State Penitentiary	OSP
Pickaway Correctional Institution	PCI
Richland Correctional Institution	RiCI
Ross Correctional Institution	RCI
Southeastern Correctional Institution	SCI
Southern Ohio Correctional Facility.....	SOCF
Toledo Correctional Institution.....	ToCI
Trumbull Correctional Institution.....	TCI
Warren Correctional Institution.....	WCI