



Marion Correctional Institution

February 7-8, 2011

**Darin Furderer,
Report Coordinator**

TABLE OF CONTENTS

	PAGE
SECTION I. <u>INSPECTION PROFILE AND INSTITUTION OVERVIEW</u>	4
A. <u>INSPECTION PROFILE</u>	4
B. <u>INSTITUTION OVERVIEW</u>	5
C. <u>COST SAVINGS INITIATIVES</u>	5
D. <u>INMATE POPULATION</u>	5
1. <u>Security Threat Groups</u>	6
E. <u>STAFF DEMOGRAPHICS</u>	6
1. <u>Staff Focus Group</u>	8
SECTION II. <u>CRITICAL CONCERNS AND POINTS OF PRIDE</u>	9
SECTION III. <u>CIIC STATUTORY REQUIREMENTS</u>	14
A. <u>ATTEND A GENERAL MEAL PERIOD</u>	14
B. <u>ATTEND AN EDUCATIONAL OR REHABILITATIVE PROGRAM</u>	14
C. <u>EVALUATE THE INMATE GRIEVANCE PROCEDURE</u>	14
SECTION IV. <u>KEY STATISTICS</u>	16
A. <u>USE OF FORCE</u>	16
B. <u>ASSAULTS</u>	16
C. <u>SUICIDES AND SUICIDE ATTEMPTS</u>	16
D. <u>INVESTIGATOR DATA</u>	17
SECTION V. <u>OPERATIONS</u>	18
A. <u>MEDICAL SERVICES</u>	18
B. <u>MENTAL HEALTH SERVICES</u>	18
C. <u>FOOD SERVICES</u>	19
D. <u>HOUSING UNITS</u>	19
E. <u>COMMISSARY</u>	20
F. <u>RECREATION</u>	20
SECTION VI. <u>PROGRAMS</u>	21
A. <u>EDUCATIONAL/VOCATIONAL PROGRAMMING</u>	21
B. <u>REENTRY/UNIT PROGRAMS</u>	22
C. <u>RECOVERY SERVICES</u>	22
D. <u>RELIGIOUS PROGRAMS</u>	22
E. <u>LIBRARY SERVICES</u>	23
SECTION VII. <u>CIIC CONTACTS AND CONCERNS</u>	24
A. <u>INQUIRIES</u>	27

TABLE OF CONTENTS

	PAGE
SECTION VIII. <u>APPENDIX</u>	28
A. <u>DATA TABLES</u>	28
Table 1. DRC Population and Prison Rated Capacity	28
Table 2. Staff Population Breakdown	29
Table 3. Inspector’s Report	30
Table 4. Use of Force with Racial Breakdown	32
Table 5. Use of Force with Racial and Monthly Breakdown	33
Table 6. Assaults: Inmate on Inmate	33
Table 7. Assaults: Inmate on Staff	33
Table 8. Suicide Attempts	34
Table 9. Investigator Monthly Report Summary by Type of Investigation ...	35
Table 10. Medical Services	36
Table 11. Mental Health Caseload by Institution	39
Table 12. Seriously Mentally Ill by Institution	40
Table 13. Monthly Academic Enrollment and Academic Waitlist	41
Table 14. GEDs Passed and Inmates on Academic Waitlist	42
Table 15. Inmate Enrollment in Educational Programs	43
Table 16. CIIC Contacts with Institutional Breakdown (DRC)	45
Table 17. CIIC Concerns with Institutional Breakdown (DRC)	46
Table 18. Top Ten Reported Concerns to CIIC (Marion CI)	47
Table 19. Breakdown of Top Three Reported Concerns (Marion CI)	48
B. <u>INSPECTION CHECKLISTS</u>	49
SECTION IX. <u>GLOSSARY OF TERMS</u>	99

**CORRECTIONAL INSTITUTION INSPECTION COMMITTEE REPORT
ON THE INSPECTION AND EVALUATION OF
MARION CORRECTIONAL INSTITUTION**

SECTION I. INSPECTION PROFILE AND INSTITUTIONAL OVERVIEW

A. INSPECTION PROFILE

Date of Inspection: February 7-8, 2011

Type of Inspection: Unannounced

CIIC Member and Staff Present: Senator Cliff Hite
Joanna Saul, Director
Darin Furderer, Inspector
Gregory Geisler, Inspector
Carol Robison, Inspector

Facility Staff Present: Maggie Beightler, Warden
Tim Milligan, Deputy Warden
Jason Bunting, Deputy Warden

CIIC spoke with many additional staff at their posts throughout the course of the inspection.

Areas/Activities Included in the Inspection:

Inmate Dining Hall
Kitchen
Housing Units
Segregation

Recreation
Staff Focus Group
OPI Metal Fabrication Shop

B. INSTITUTION OVERVIEW

Marion Correctional Institution is a 1,032 acre facility, which opened in 1954. The facility is a level two security (medium security) male institution. The institution's budget is \$32,868,373 and the daily cost per inmate is \$45.21. The date of the most recent ACA audit was September 14, 2010 through September 16, 2010. The facility was 100 percent compliant on all mandatory standards and 97.92 percent compliant on non-mandatory standards.

C. COST SAVINGS INITIATIVES

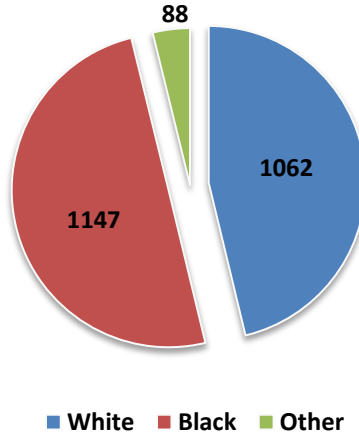
In the 129th General Assembly biennium, one of CIIC's goals is to identify cost savings across the DRC. Staff relayed the following cost savings measures implemented at the Marion Correctional Institution:

- Similar to other DRC institutions, MCI has a recycling program that produces cost savings by removing trash from the dumpsters, so the institution does not have to pay for removal. MCI has taken the recycling program one step further by engaging in discussions with local recycling facilities that may bring their trash to MCI to use inmates for sorting and baling.
- Staff reported a tremendous cost savings of \$70,000 per year simply by switching to a concentrated form of chemicals and diluting the chemicals at the facility.
- As an additional cost savings innovation, staff proposed charging a processing fee to courts for handling court-ordered collections, similar to what a private collections agency might receive. According to staff, DRC personnel are responsible for collecting, processing, and sending money that inmates owe to courts without receiving compensation for their services. This service requires substantial time and resources on the part of DRC staff, for which staff proposed charging a small processing fee in compensation.

D. INMATE POPULATION

The rated capacity for Marion Correctional Institution is 1,666. The inmate count as of February 7, 2011 was 2,310. The average age of the inmate population was 45.4 years as of January 2011. Table 1 in the Appendix provides information about the DRC population and prison rated capacity per institution as of January 31, 2011.

Chart 1
Breakdown of Inmate Population
January 31, 2011



1. Security Threat Groups (STG)

There are 114 identified Security Threat Groups (aka prison gangs) at the institution and 281 STG-affiliated inmates. Despite this number, staff relayed that STG activity is not a large concern at the facility, which is in contrast to most of the other Level 2 facilities in the DRC. Staff speculated that the reason for the low STG activity is the higher average age of offenders, as compared to the other medium facilities, as well as the range of programming available.

The top five Security Threat Groups are:

- Aryan Brotherhood: 36
- Crips: 27
- Bloods: 22
- Latin Kings: 17
- Gangster Disciples: 17

E. STAFF DEMOGRAPHICS

Of the 451 total staff at Marion Correctional Institution as of February 1, 2011, 327 (72.5 percent) were male and 124 (27.5 percent) were female. Of the total staff, 405 (89.8 percent) were classified as white, 37 (8.2 percent) as black, and nine (2.0 percent) as other. Table 2 of the Appendix provides more information about the staff population.

There were 37 vacancies at the institution as of January 2, 2011. The vacancies consisted of a labor relations officer, a farm supervisor, an electrician, two food service coordinators, a health information technician, four nurses, two teachers, one psychologist, one program specialist, two correctional sergeants, and 21 correctional officers.

Chart 2
Breakdown of Staff Population
February 1, 2011

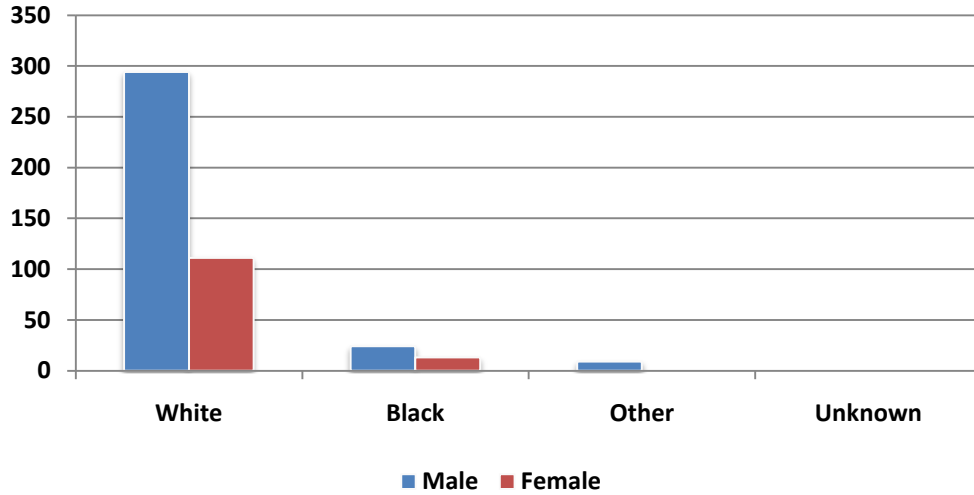
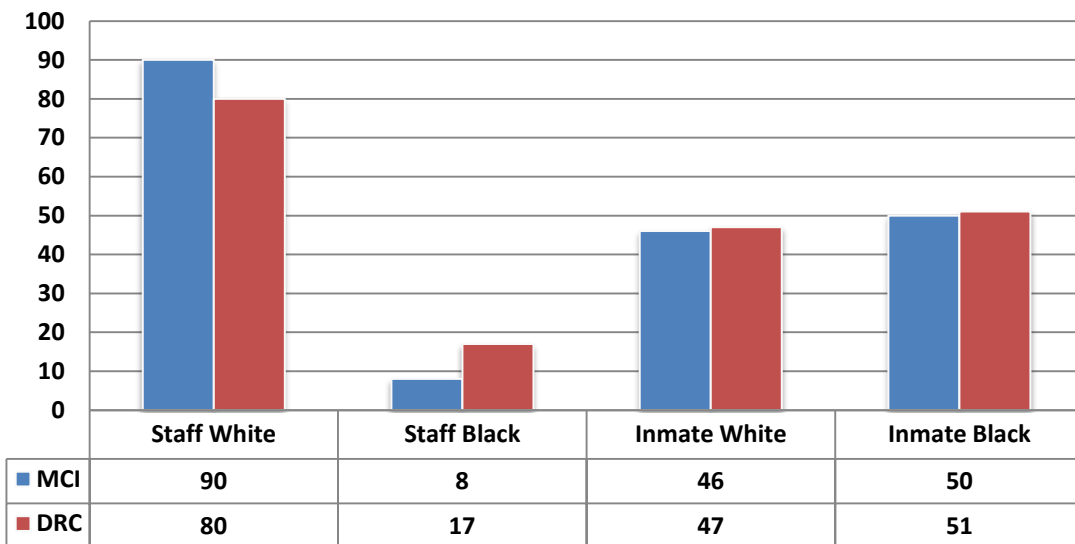


Chart 3
Staff and Inmate Comparison by Percentage of Race
February 1, 2011



1. Staff Focus Group

A staff focus group was conducted during the inspection where representative staff members from various departments at MCI were able to relay any concerns, issues, or points of pride. As relayed in the Initial Report (see Section II), staff morale overall was high, with multiple staff relaying positive comments regarding the institution and staff as a whole.

Staff concerns included the following:

- Budget cuts. Staff stated that they are “doing a lot more with a lot less” and reported that a Case Manager’s caseload before the cuts was around 115 inmates, but is now over 300 inmates. Staff also relayed that the institution is understaffed with correctional officers.
- Inmate overcrowding. New beds continue to be added to the facility, which leads to inmate complaints and tension.
- Additional resources are needed for both mentally ill inmates and inmates with substance abuse problems. Staff relayed that the mental health caseload continues to grow and that they can only treat approximately two percent of the inmates with substance abuse problems.
- Additional resources are also needed for education. Despite staff pride in the services provided, staff relayed insufficient funds to replace books and can only purchase the most basic supplies.

SECTION II. CRITICAL CONCERNS AND POINTS OF PRIDE

The following initial report was provided to the DRC Director, Assistant Director, North Regional Director, and the Marion Correctional Institution Warden on February 9, 2011. DRC provided a response, which is inserted in the shaded boxes below.

Initial Report of the CIIC Inspection of the Marion Correctional institution February 7, 2011

On February 7, 2011 and February 8, 2011 State Senator Cliff Hite, CIIC Director Joanna Saul, CIIC Inspector Darin Furderer, CIIC Inspector Greg Geisler, and CIIC Inspector Carol Robison inspected the Marion Correctional Institution. The following highlights the critical concerns and the points of pride observed during the Inspection as well as DRC's response.

CRITICAL CONCERNS

MEDICAL SERVICES

Inmates throughout the inspection expressed dissatisfaction with health care provided at the institution. They relayed that nurses display disdain and hostility toward them, which some believe is an attempt to deter them from seeking care. The inmates commented that it takes an excessive amount of time to see the doctor and reported waitlists of one to two months. Chronic care inmates who are supposed to see the doctor once every 90 days reported that they have not seen the doctor within those time parameters. These delays are partially attributed to being understaffed, but they recently added a Physician's Assistant in addition to the Doctor and Nurse Practitioner who already work at the institution.

Inmates reported that medications had been stopped abruptly upon transfer to the institution. They feel that their medication orders have been rescinded without consideration for decisions made by previous DRC doctors. In addition, staff explained that inmates who rely solely on state pay and are referred to commissary for over-the-counter medications have to choose between the medications and hygiene due to cost.

Finally, there still appears to be a discrepancy with specialist's recommendations at Ohio State University Medical Center and the care administered by DRC providers. Inmates believe that DRC frequently does not follow the recommendations made by specialists. While CIIC understands that DRC policy does not require DRC doctors to follow specialists' recommendations, some consistency in treatment recommendations between medical professionals seems a reasonable expectation. A review should be conducted, comparing specialists' recommendations to those of DRC doctors. If there is a legitimate explanation for differences – anecdotally, specialists have been said to recommend unnecessary tests, for example – then that should be apparent as a result of the review.

MCI Response:

MCI administration attended the meeting to share with medical staff their directives for

staff regarding professionalism and to share the seriousness of this issue. A candid conversation was held with the basic message that any and all complaints of staff unprofessionalism would receive investigation and administrative recourse for any findings pointing to unprofessional treatment of our patient population.

Chronic care clinics (CCC) have been increasingly behind. Over the course of the past two and a half years, we have struggled to provide timely CCC follow up given our increasing population, high chronic illness of our population, and due to having care needs exceeding the time available from our advance care provider (ALP) resource. During the summer of 2008, we were identified in need of 2.5 to 3.0 FTE ALP staffing by FUSSELL oversight committee members for advanced care provider time to meet medical care needs of our population. As of mid January 2011, we remained with only two ALPs.

We did receive an additional agency ALP on February 14, 2011. As a result of our augmented staffing levels, we have reduced our backlog from 1050 as of early February 2011 to 448 as of March 7, 2011. The additional help has made a significant impact.

It falls on MCI to properly address medication orders that were prescribed at other institutions that may not have followed proper prescribing patterns as per directives and clinical indications. MCI medical department followed directives to point patients to OTC utilization and did order medications for 30 days to allow commissary purchasing or medical access to be evaluated if patients felt they were exempt from direction being provided.

On numerous occasions, we receive concern that our patients cannot afford OTC purchasing because of their spending monies on hygiene items. We receive each case on its own merit. We are finding that patients whether limited or not in available funds, even those with only state pay, choose to purchase non-hygiene items. We are able to review each case individually and find this to be true. If we find patient concern to be accurate, medical does intervene to assure their care needs are being met.

Regarding discrepancy of specialist recommendation at Ohio State University Medical Center and what the institution is providing, Bureau of Medical Services has taken the proactive initiative started 3 weeks ago to review all recommendations and meeting in collegial review with all DRC facilities. This practice is expected to standardize recommendations with needed care to better manage our actual population needs compared to recommendations made.

RESTROOM/SHOWER AND WATER CONDITIONS

Although the general condition of the facility remained clean and well maintained, there were several observable maintenance issues in the inmate restrooms and showers. Shower areas had chipped paint and remnants of soap scum as well as water stains. One shower in the minimum camp and others at the main compound continued to run and drip after being shut off, which leads to unnecessary costs.

In addition, inmates in every housing unit commented that there is often no hot water for showers.

MCI Response:

In response to the issues raised regarding shower conditions, we met with Correction Officers to stress the importance of maintaining clean showers. Our Unit Managers have been reminded to make quality rounds through their units and to inspect all areas under their supervision including showers and restrooms. Our Health and Safety Officer has organized a team of offenders who are willing to work as a detail cleaning team. Another item of concern from CIIC's report is the mention of chipping paint. This specific area of concern is located in our Segregation Unit. Our Maintenance staff is currently planning to tackle this task. Another problem brought to the attention of the members of CIIC is the issue of hot water. Over the last several months, MCI has been experiencing problems with a reduced amount of domestic hot water. This translates into a lack of hot water for offenders to shower. We invited and met with Ron Chaney from the Bureau of Construction, Activation and Maintenance to discuss our possible problems and to look for solutions to this issue. We have also received input from the companies responsible for the installation of our domestic hot water heaters. It appears our problem stems from the increase in demand for hot water during peak offender usage. One symptom making this more noticeable is the increase in population which directly reflects in the increase in water demand. In order to alleviate this problem, we work on water conservation by assigning offenders in living areas the responsibility to make sure when not in use that faucets are tuned off. We are also encouraging staff to submit work orders when they find faucets that will not shut off. Additionally, we have been discussing developing a plan to go to a shower schedule, which would further reduce the hot water issue and also permit offender porters more time to clean shower areas during down time.

DISCIPLINARY PROCEDURES

Several inmates relayed that they were placed in segregation, but have yet to see a hearing officer or the Rules Infraction Board (RIB) within the seven day period required per policy.

MCI Response:

In order to properly address the issue of disciplinary procedures we held meeting with both the Unit Managers and Unit Correctional Counselors/Sergeants on March 2, 2011. We discussed the importance of hearing Conduct Reports in a timely manner and addressed specific policy guidelines. In order to reduce or eliminate this problem we have initiated a process of checks and balances. Unit Managers each day are to report to the Captain's Office to the review Security Control reports from the day before. Additionally, Custody Supervisors are to forward emails to all the Unit Managers advising them of any S/C placements in order to track the timeliness of hearing be performed in a timely manner.

INMATE STAFF RELATIONS

Although staff and inmate interactions were professional during the inspection, several inmates at the minimum camp relayed that female officers used foul language and racial slurs. Inmates in Two Dorm expressed concern for the manner in which a female officer addressed them and the improper names she used.

MCI Response:

To help address the issue of offender/staff relations we are developing a lesson plan specific to the issues of professionalism and appropriate interaction between staff and offenders. This topic will be offered to all staff at MCI during our next phase of in-service training.

OVERCROWDING

Inmates relayed concerns about the continued addition of beds in the dormitories. The addition of inmates and beds in the dormitories puts a strain on the maintenance of the facilities as they were designed for a specific capacity. Inmates inquired about the standard and the maximum amount of inmates per square footage.

MCI Response:

In order to help alleviate the burden of overcrowding here at MCI, we will continue to provide programming available to all offenders. MCI will strive to improve and increase programs available to offenders to help reduce the stresses associated with overcrowding. By offering additional programs or improving existing programs, MCI's offenders will be able to focus on positive outcomes consistent with our department's Reentry philosophy versus, dwelling on issues associated with overcrowding. Additionally, Unit Management staff will increase their rounds in areas where staff and offenders intersect to further meet their needs and address any concerns.

POINTS OF PRIDE

CREATIVE PROGRAMMING

The institution has implemented several creative programs, which include the Prison News Network (PNN), Lifeline, and wildlife rescue. In the midst of budget cuts and staff reductions, the administration has still found a way to keep inmates busy while offering valuable and rewarding skills. The Lifeline program, which offers training in such diverse areas as computer technology, conflict resolution, and foreign languages, should be evaluated for possible implementation in other prisons. The Recreation Department was also impressive, affording inmates opportunities in art, music, crafts, weight-training, and organized exercise activities, including inmate-led step aerobics.

STAFF MORALE

Despite budget issues and large caseloads, staff maintained a positive morale. They expressed pride for their work at the institution and maintained that the institution is exceptional. The staff

appreciates each other and demonstrated a sense of caring for their fellow co-workers. They pointed out the fact that they are one of the lowest institutions when it comes to inmate on inmate assaults and inmate on staff assaults as a point of pride.

POSITIVE/SAFE ATMOSPHERE

No inmates relayed concerns regarding their personal safety, issues with gangs, or theft of property. Knowing that these issues are present in most, if not all, institutions, the staff appears to be doing a great job of addressing and alleviating any matters related to the aforementioned concerns. The atmosphere in all the housing units was calm and there did not appear to be any lingering tension.

INMATE EMPOWERMENT

It is evident by the inmate movement and level of supervision that there is a certain level of trust between the staff and inmates. There is a high, yet safe, degree of inmate autonomy, specifically in the Lifeline, PNN, and OPI areas. Inmates were observed doing their jobs, leading programs, and taking care of daily operations without extremely close staff supervision. This increased level of independence likely has a positive effect on both the institutional environment as well as reentry success.

STRONG ADMINISTRATIVE STAFF

Staff pointed to former Warden Money and current Warden Beightler for the positive initiatives and environment at MCI. It is clear that the Warden was respected by inmates and staff during the inspection. During the inspection, the Warden sat down and ate the meal with the inmates, demonstrating the strong professional relationship developed between the administration and inmates.

SECTION III. CIIC STATUTORY REQUIREMENTS

A. ATTEND A GENERAL MEAL PERIOD

Pursuant to Section 103.73 of the Ohio Revised Code, a general meal period was attended on the day of the Inspection. The menu consisted of a hamburger patty, two slices of white bread, chopped potatoes, coleslaw, cooked peas and carrots, and a fresh orange. Inmates had a choice of water and Kool-Aid style drink. CIIC and the inmates rated this meal as average.

B. ATTEND AN EDUCATIONAL OR REHABILITATIVE PROGRAM

Ohio Revised Code Section 103.73 also requires attendance at an educational or rehabilitative program. During the inspection, the Intensive Outpatient Program (IOP) was observed. There were ten students in the program and two teachers. The program, which incorporates Cognitive Based Therapy (CBT) components, is 12 weeks long; inmates in the observed program were in their sixth week of the course. Students appeared to be responsive as well as engaged in the lesson. Inmates were encouraged to take responsibility for their learning by participating throughout the program.

During the observed portion of the program, inmates and staff sat in a large circle. An inmate read a personal statement and both inmates and staff provided positive feedback regarding the statement and the personal growth changes that the inmate had made during his time in the group.

Strategies for learning exhibited during the program include: lecturing, podium exercises, as well as small group and large group exercises. For more information about programming at Marion Correctional Institution, please refer Section VI of the report.

C. EVALUATE THE INMATE GRIEVANCE PROCEDURE

Pursuant to Section 103.73 of the Ohio Revised Code, the CIIC is required to evaluate the inmate grievance procedure at each state correctional institution.

The inmate grievance procedure is a three step administrative process, established in DRC Administrative Rule 5120-9-31. The grievance procedure allows for investigation and nonviolent resolution of inmate concerns. The first step is an informal complaint resolution, which the inmate submits to the supervisor of the staff person or department responsible for the complaint. The second step is a notification of grievance, submitted to the Inspector. The final step is an appeal of the Inspector's disposition to the Chief Inspector in DRC Central Office.

The Inspector's Activity Report for January 2010 through December 2010 is provided in Table 3 of the Appendix. According to the Inspector's report there were 682 grievances filed during the year. The report also indicates that there were 2,333 informal complaints received. Of the 672 grievances completed, 514 were denied, 12 were withdrawn by the inmate, and 146 were granted. The top three categories with the most grievances were Health Care with 172, Personal Property with 141, and Staff Accountability with 103.

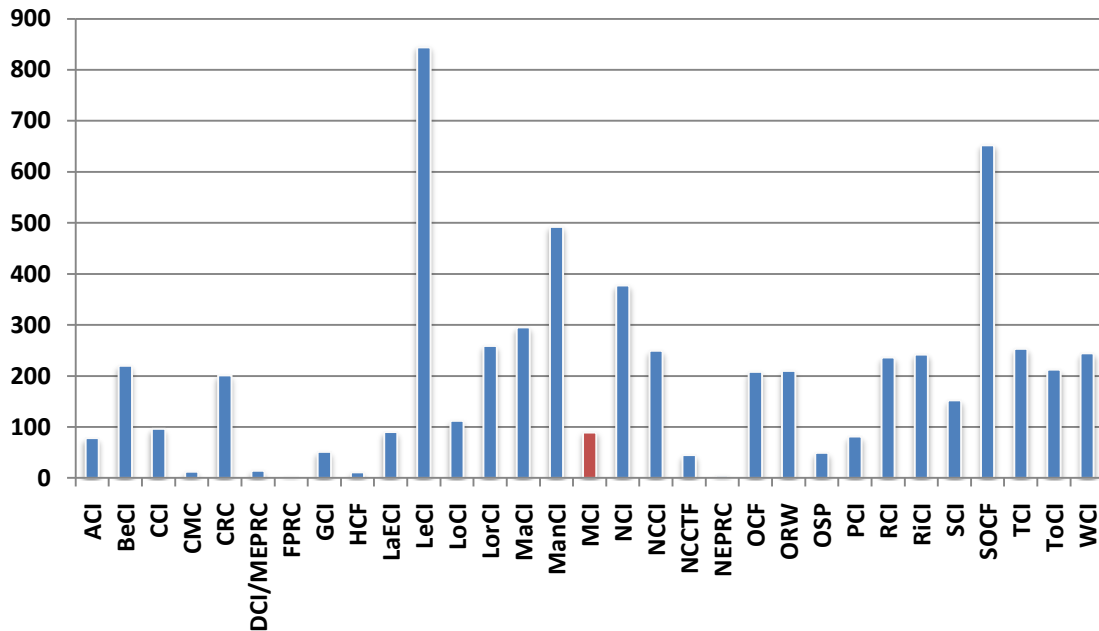
The number of grievances filed at Marion Correctional Institution in 2009-2010 was the highest across the DRC. While the high number of grievances may be taken as a sign of problems, it may also indicate that inmates feel safe in using it and that it is an effective way for them to resolve problems. The concentration of grievances in the area of Health Care reflects the high number of contacts to CIIC regarding medical services at Marion Correctional Institution, as well as the problems that were observed during the inspection and relayed in the Initial Report (see Section II).

SECTION IV. KEY STATISTICS

A. USE OF FORCE

The facility reported 40 Use of Force incidents from July 2010 through December 2010. There were 24 incidents involving black inmates, 14 involving white inmates, and two involving an inmate of another race. Table 5 of the Appendix provides an explanation of Use of Force and a breakdown of the use of force incidents from July 2010 through December 2010. The following chart displays the breakdown for the entire 2010 calendar year.

Chart 4
Use of Force by Institution
January 2010 to December 2010



B. ASSAULTS

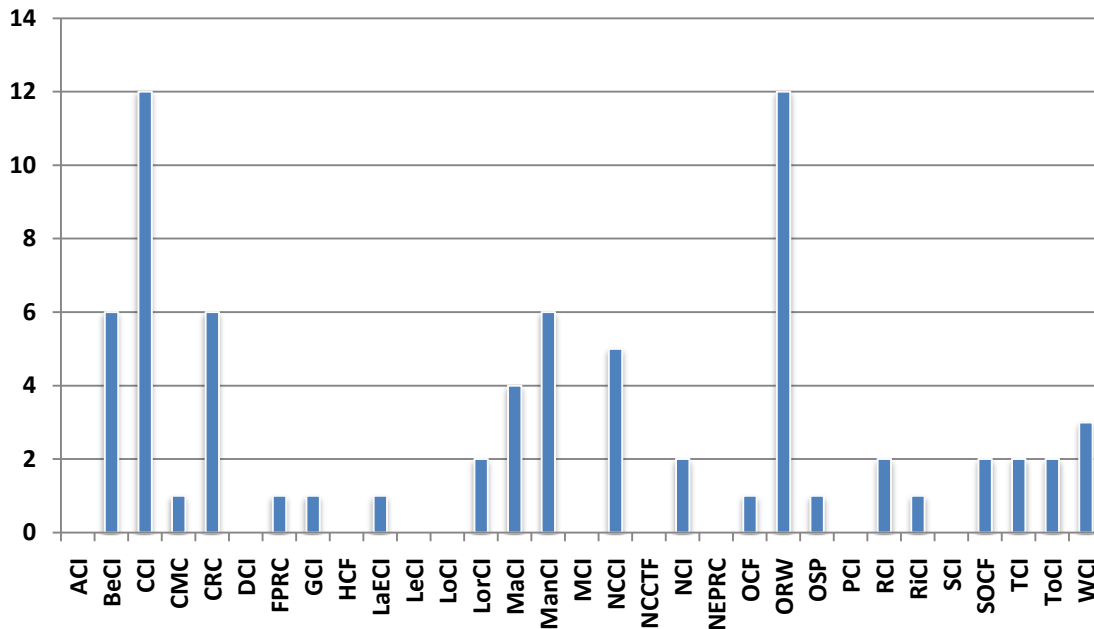
From February 1, 2010 through February 7, 2011, there were **34 reported inmate-on-inmate assaults**. The largest number of inmate-on-inmate assaults occurred in a general population dorm and in Local Control segregation. The institution also had 12 inmate-on-staff assaults. Of the 12 inmate-on-staff assaults, four (33.3 percent) were harassment assaults while the other eight (66.7 percent) were physical assaults. Tables 6 and 7 provide a snapshot of the assault data at Marion Correctional Institution from February 1, 2010 through February 7, 2011.

C. SUICIDES AND SUICIDE ATTEMPTS

The Ohio Department of Rehabilitation and Correction reported 73 attempted suicides from January 2010 through December 2010. Marion Correctional Institution had no suicides and no

suicide attempts during this period. Table 8 of the Appendix outlines the suicide attempts per month for each institution.

Chart 5
Suicide Attempts by Institution
January 2010 to December 2010



D. INVESTIGATOR DATA

The role of the Institutional Investigator is an essential component to ensuring the safety and security of the institution. Investigators are generally focused on investigating illegal substances, assaults, or issues regarding the professional misconduct of staff members. Investigator-initiated investigations do not constitute the total number of investigations conducted regarding contraband or any other matter in the institution, which may be initiated by other staff persons. From July 2010 to December 2010, the Investigator initiated 60 investigations. The majority of the activity involved positive urinalysis, conducting background investigations (presumably on new hires), and investigations into drug related matters.

The reports also show major contraband confiscated. From July 2010 through December 2010, several cases were initiated related to major contraband, which included: various amounts of marijuana not exceeding five grams, tobacco, four syringes and needles, two shanks, and a cell phone. The cases involving marijuana and the shanks were referred to the Ohio State Highway Patrol for investigation. The four syringes and needles were three separate incidents occurring in the same month. This prompted staff to review medical procedure, which allowed inmates to give themselves diabetic insulin shots. The institution reverted back to nurses administering the injections and giving staff total control of the syringes. Table 9 in the Appendix provides a breakdown of cases by type.

SECTION V. OPERATIONS

A. MEDICAL SERVICES

During the inspection, the medical services area was inspected. The medical area appeared small with only a few exam rooms and offices. Staff expressed this as a concern during the inspection. The area also had three crisis cells as well as a room with six infirmary beds.

The institution's table of organization consists of 18 nurses total, with 14 Registered Nurses (RN) and four Licensed Practical Nurses (LPN). However, staff reported that they currently have three RN vacancies and one LPN vacancy. They explained that they recently hired two RNs and one LPN who are currently in training. The institution also has one Physician's Assistant, one physician, and one Nurse Practitioner.

According to monthly medical services reports provided by the institution, from July 2010 to December 2010, nurses performed a total of 4,321 Sick Calls and Assessments. Doctors performed a total of 1,812 Sick Calls.

During the same time period, there were 48 instances where inmates were sent to a local emergency room; there were 45 instances where inmates were sent to OSU. Medical staff treated a total of 294 inmate emergencies on site.

There were 2,283 scheduled dental appointments and 204 emergency dental visits. There were a total of 1,953 visits.

Specialty care at Marion Correctional Institution includes both podiatry and optometry. A total of 537 inmates were seen by the Optometrist. A total of 389 inmates were seen by the podiatrist.

The Pharmacy filled a total of 44,390 prescriptions during the six month period.

2,047 inmates were tested for tuberculosis during the six month period. 26 HIV positive inmates are housed at Marion Correctional Institution.

Table 10 of the Appendix provides more information about the medical services at Marion Correctional Institution.

B. MENTAL HEALTH SERVICES

The total number of mental health staff is 12. The mental health staff includes one Mental Health Manager (psychologist), one 20 hour psychiatrist, two psychologists, two psych assistants, two psych Registered Nurses (RN), one Social Work Supervisor, one Social Worker, one 24 hour Certified Nurse Practitioner (CNP), and one Mental Health Supervisor.

There were 5,664 mental health prescription issued from July 2010 through December 2010.

There were 499 inmates on the mental health caseload on the day of the inspection, which is greater than the DRC-wide average (352.5 as of November 2010) institutional caseload. Of those inmates, 167 were listed as Seriously Mentally Ill (SMI), which is greater than the average (152.5 as of November 2010) institutional SMI population across the DRC.

Table 11 of the Appendix gives a snapshot of the mental health caseload per institution while Table 12 provides information about the amount of SMI inmates per institution.

C. FOOD SERVICES

As of 2010 the average cost/meal was \$0.69. The food preparation area was very well maintained and extremely clean. There was ice on the floor upon entering the preparation area, but staff quickly addressed the problem. Staff relayed that there are 174 inmate workers assigned to food services. They explained that the inmates are trained regarding proper hygiene and both the inmate and staff bathroom contained soap. Inmates as well as staff were wearing hair nets and gloves while preparing and serving the meal during the inspection. The equipment is sanitized each shift and chemicals are properly secured.

When asked about any issues with the equipment, staff reported that they recently had to order a tilt grill. They reported that they also have issues with the coolers and the freezers due to a water cooling tower. They stated that when the water cooling tower shuts down, so do the coolers and freezers in the institution. However, they stated they are in the processes of replacing it. They reported that maintenance is “good” about fixing issues.

Inmate workers are trained on the proper use of the equipment and a chit system is used to keep track of tools. Knives are issued according to procedure and used only under staff supervision. The knives are chained to the table during their use. The food storage areas remained clean and food was properly wrapped, dated, and stored.

Staff reported that they do not have any pest issues and stated they passed their last health inspection on September 23, 2010.

D. HOUSING UNITS

Marion Correctional Institution has 21 housing areas.

- 1 Dorm
- 2 Dorm
- 3 Dorm
- 4 Dorm
- 5 Dorm
- 6 Dorm
- 7 Dorm
- 8 Dorm
- A Dorm
- B Dorm
- C Dorm
- D Dorm
- E Dorm
- F Dorm
- G Block
- H Block
- J Block
- K Block
- M Block
- R Block
- Marion Correctional Camp

Inmates relayed concerns regarding conditions of showers, water temperature, and medical. The conditions of the housing units were good. The dormitories and cell blocks were clean and well maintained with the exception of the showers.

The conditions of the showers and restroom facilities were generally poor. Almost every shower area had paint chipped from the floor and walls and the ceiling in 8 Dorm was decrepit. Although it was reported that they were cleaned daily, the showers also appeared to contain soap scum, water stains, and chemical residue. There were no toilets or showers inoperable. However, some showers appeared to be shut off, but still had water leaking from them.

Segregation

The segregation count on the day of the inspection was 91 with 38 inmates under Security Control (SC) status, 28 inmates in Local Control (LC), and 25 inmates under Disciplinary Control (DC). The conditions of segregation were decent. Although cells had chipped paint and some had writing on the walls, they appeared clean and livable. Inmates relayed concerns regarding the amount of time in segregation without seeing the hearing officer or RIB. Several stated that they were placed in segregation with a ticket, but were not seen by disciplinary personnel within seven days per policy.

E. COMMISSARY

Although CIIC did not inspect the commissary, Marion Correctional Institution staff relayed that the camp inmates are allowed to go to commissary three times per month and can spend up to \$100 each time. Staff relayed that the commissary did not have any problems with pests or vermin. Staff further relayed that camp inmates did have a concern regarding access to the same items that were offered in the commissary on the main compound. However, that concern has since been resolved and there is now equal opportunity to the same items for both camp and main compound inmates.

The commissary profits are placed in the institution's Industrial and Entertainment (I and E) funds, which are reinvested back into the institution.

F. RECREATION

The Recreation Department at Marion Correctional Institution is impressive, both in terms of conditions and in the diversity of activities provided to inmates. During the inspection, inmates were observed playing basketball, participating in aerobics, arts and crafts, music programming, and weight training. Staff explained that inmates are permitted to be in the weight cage three times a week of one hour. Recreation staff stated they monitor inmate's usage of the weight cage, as inmates must swipe their card upon entrance.

SECTION VI. PROGRAMS

Inmate programming falls under several categories, which may include academic (secondary, post-secondary or college, GED or ABE), vocational, career-technical, community service, rehabilitative, recovery, or reentry. Quality of programming is considered an important issue for Ohio legislators, as demonstrated by the CIIC statutory obligation to include an educational or rehabilitative program as part of the inspection.

In recent years, however, access to programming has arisen as an additional concern, as prison overcrowding has resulted in lengthy waitlists for programs. Lack of access to programs has serious consequences: It both impedes the reentry effort and leads to inmates finding other, potentially less beneficial ways to pass the time.

As discussed in Section II, Marion Correctional Institution offers a diversity and range of creative programming that is unparalleled in the DRC. The programs included in this section are official programs, which number does not touch the full range of activities available at the facility. As an example, the Lifeline program, mentioned in Section II, does not fit in an official “reentry program” box, but provides numerous reentry-related skills to inmates, including computer skills, language skills, and even conflict resolution skills. The Lifeline program demonstrates staff and volunteer commitment to inmates’ future success.

A. EDUCATIONAL/VOCATIONAL PROGRAMMING

According to information provided on the day of the inspection, there were 96 inmates enrolled in the Literacy program and 54 inmates on the waitlist. There were 130 inmates enrolled in the Pre-GED program with 30 inmates on the waitlist and 55 inmates enrolled in the GED program with 48 inmates on the waitlist. Overall, there were 281 inmates enrolled in academic/GED preparatory programs and 132 inmates on the waitlist.

According to information provided on the day of the inspection, there were 13 inmates enrolled in the Administrative Office Technology (AOT) career tech program and 380 inmates on the waitlist. There were 20 inmates enrolled in the Auto Technology program with 320 inmates on the waitlist, 11 inmates enrolled in the Production Agriculture program with no inmates on the waitlist, and 19 inmates enrolled in the Vocational Welding program with 428 inmates on the waitlist.

Overall, there were 63 inmates enrolled in career tech programs and 1,128 inmates on the waitlist. For a full breakdown of inmate enrollment in educational and vocational programs for December 2010, see Table 15 of the Appendix.

MCI also offers a college program with 126 inmates enrolled. According to information provided, three one-year certificates were awarded to inmates and five two-year certificates awarded so far this year. These certificates can reportedly be applied toward college credits in a degree subject after release to the community.

B. REENTRY/UNIT PROGRAMS

Reentry programming focuses on skill development in dealing with issues as conflict and confrontation, or employment skills. There are 22 reentry programs at Marion Correctional Institution, which include:

1. Adult Basic Literacy and Education (ABLE) Literacy
2. Advanced Job Training
3. Apprenticeship
4. Cage Your Rage
5. Career Enhancement (Administrative Office Technology)
6. Career Enhancement (Automotive Technology)
7. Career Enhancement (Cabinet Making)
8. Career Enhancement (Production Agriculture)
9. Career Tech (Administrative Office Technology)
10. Career Tech (Auto Mechanics)
11. Career Tech (Carpentry)
12. Career Tech (Production Agriculture)
13. GED Instruction and Work Study
14. Inside Out Dad
15. Intensive Outpatient Program
16. Money Smart
17. Pre GED Instruction
18. PROVE – Personal Responsibility of Violence Elimination
19. Recovery Services AOD Education Program
20. Responsible Family Life Skills
21. Thinking for a Change
22. Victim Awareness

According to information provided on the day of the inspection, 25 inmates were enrolled in the career enhancement program.

C. RECOVERY SERVICES

Recovery services programming focuses on inmates who have experienced problems with substance abuse. Marion Correctional Institution has a variety of recovery services programming, which includes: Intensive Outpatient Program (IOP), Continuing Care Services, Alcohol and Other Drugs (AOD), # 12 program, as well as the Alcoholics Anonymous and Narcotics Anonymous programs.

D. RELIGIOUS PROGRAMS

According to DRC policy 72-REG-02, the DRC “seeks to meet all inmates’ religious needs within the unique parameters of the correctional setting.” Marion Correctional Institution offers religious programming for various faith groups including, but not limited to: Christianity, Islam, Judaism, and Wiccan. Furthermore, faith-based volunteers often come into the institution to provide faith-based studies.

Per House Bill 113 of the 127th General Assembly, CIIC monitors the DRC's use of volunteers. According to institutional staff, Marion Correctional Institution has 346 volunteers that come into the institution on a monthly basis to provide faith-based activities for the inmates.

E. LIBRARY SERVICES

Each institution has a library and a law library. Access to both remains a primary issue of concern for CIIC, as numerous letters have indicated inmates' dissatisfaction with the number of hours allowed, particularly when inmates wish to perform legal research. According to staff, each inmate has a daily opportunity to go to the library and may kite to request additional time. It was relayed that library services are also available during the evenings and on weekends.

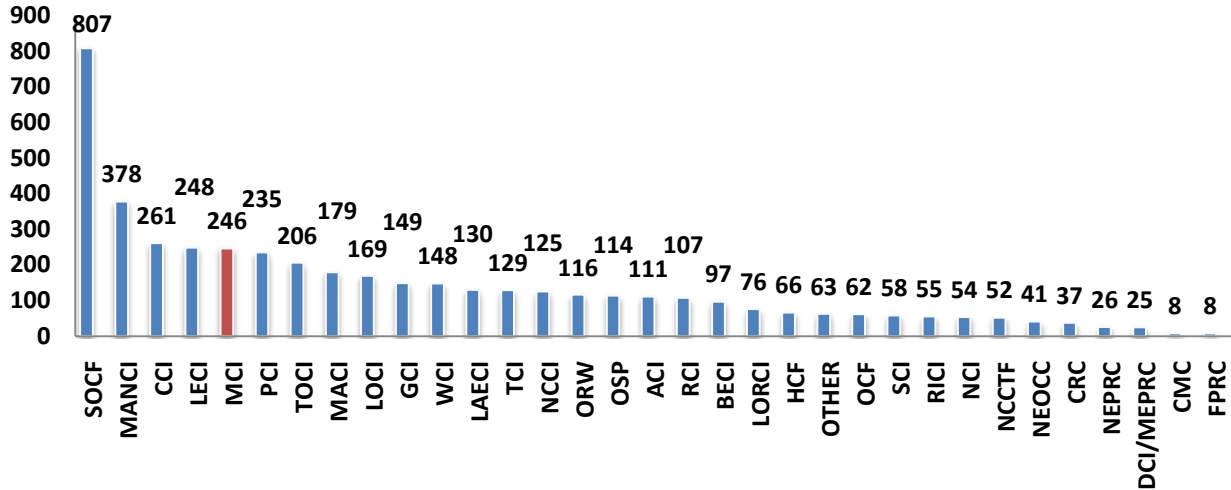
There are 20 inmate library aides and the library appeared to be clean and well maintained. The library had a set of the DRC Administrative Rules, but they appeared to be out of date. Inmates have access to eight computers of which four are equipped with Westlaw and four are used as word processors.

New materials are added to the library annually. Former CIIC Chairman and State Representative Tyrone Yates recommended that each institutional library have separate sections for ethnic literature – in particular, inspirational biographies – that would serve both educational and rehabilitative purposes. The institution had three shelves containing African American literature and one shelf of literature in Spanish. The rest of the ethnic specific literature is integrated into other sections.

SECTION VII. CIIC CONTACTS AND CONCERNS

From January 1, 2009 through December 31, 2010, CIIC received 246 contacts from or regarding inmates at Marion Correctional Institution, of which 803 concerns were reported. The institution ranked fifth among all DRC institutions for total number of contacts.

Chart 6
CIIC Contacts with Institutional Breakdown (DRC)
January 1, 2009 through December 31, 2010



The top five concerns reported to CIIC regarding Marion Correctional Institution were: Health Care (156), Supervision (110), Staff Accountability (97), Non-Grievable (75), and Inmate Grievance Procedure (62). Tables 18 and 19 of the Appendix provide information about the concerns related to CIIC regarding Marion Correctional Institution.

Chart 7
Top Ten Reported Concerns to CIIC (Marion CI)
January 1, 2009 through December 31, 2010

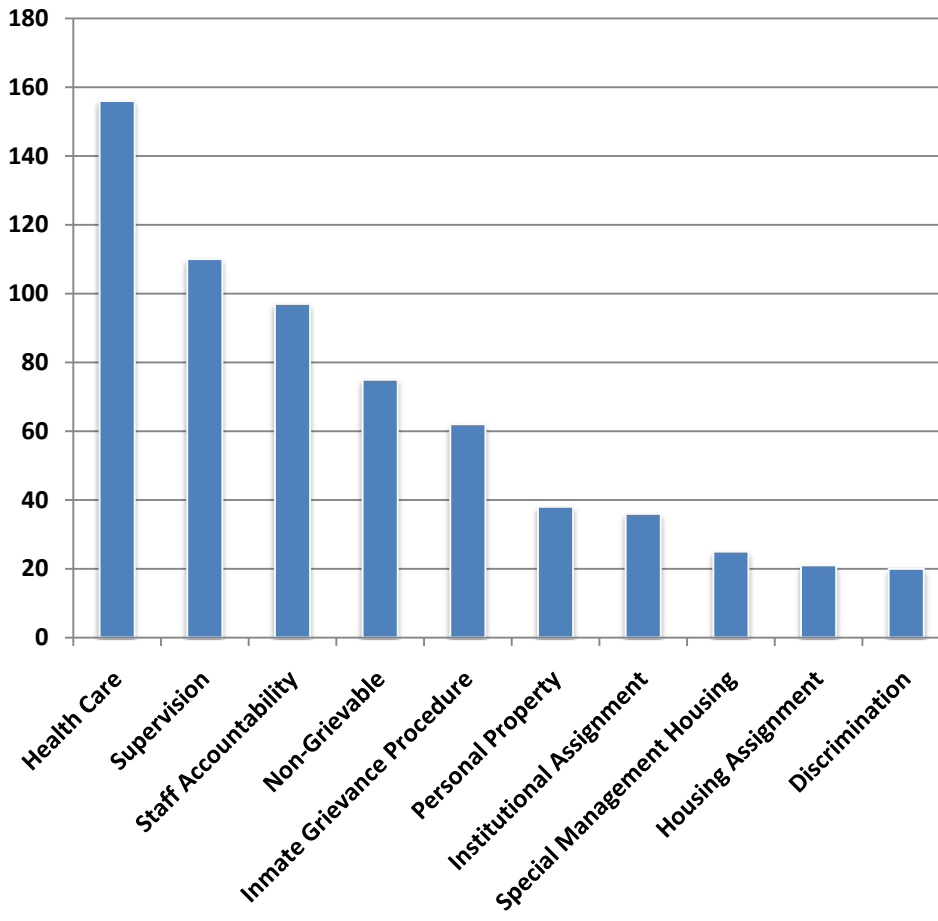
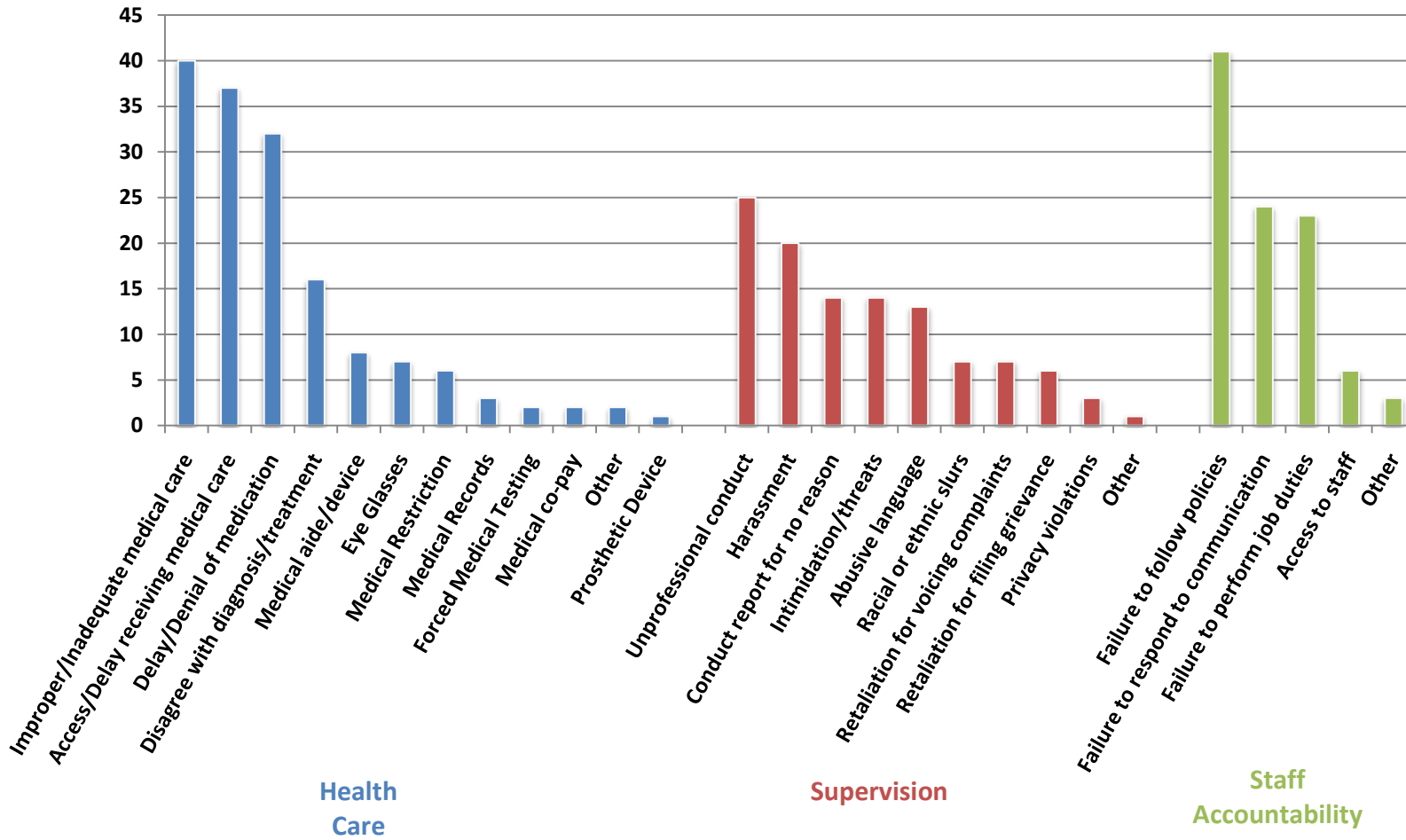


Chart 8
Breakdown of Top Three Reported Concerns (Marion CI)
January 1, 2009 through December 31, 2010



A. INQUIRIES

Written inquiries are conducted for the most serious concerns communicated to CIIC such as personal safety, medical, and use of force. CIIC conducted two written inquiries regarding inmates at Marion Correctional Institution prior to the inspection in 2011. Both inquiries were in regard to serious inmate medical concerns. The first inquiry alleged inadequate medical treatment for cancer and the second inquiry alleged inadequate medical treatment for a skin condition.

Following the inspection, CIIC received many letters from additional inmates, also alleging serious medical concerns, including denial of pain medication, denial of necessary surgery, persistent skin conditions, and medical staff misconduct. These inquiries reflect the serious medical concerns communicated to CIIC staff during the inspection (see Section II). It should be noted that the MCI staff have responded to each one of the inquiries.

SECTION VIII. APPENDIX

A. DATA TABLES

Table 1. Prison Rated Capacity with Population and Percent of Capacity January 31, 2011			
Institution	Rated Capacity	Count as of January 31, 2011	Percent of Capacity
LorCI	756	1,617	214
LeCI	1,481	2,798	189
WCI	807	1,383	171
CRC	900	1,529	170
CCI	1,673	2,835	169
GCI	939	1,521	162
ManCI	1,536	2,478	161
HCF	298	473	159
RCI	1,643	2,586	157
ACI	844	1,324	157
ORW	1,641	2,573	157
TCI	902	1,357	150
BeCI	1,855	2,675	144
MCI	1,666	2,281	137
RiCI	1,855	2,501	135
NCI	1,855	2,394	129
NCCI	1,855	2,275	123
SCI	1,358	1,499	110
LoCI	2,290	2,493	109
MaCI	2,167	2,319	107
NCCTF	660	685	104
DCI	482	487	101
ToCI	1,192	1,189	100
LaECI	1,498	1,491	100
OCF	191	187	98
FPRC	480	466	97
SOCF	1,540	1,388	90
MePRC	352	314	89
PCI	2,465	2,116	86
NEPRC	640	515	80
OSP	734	571	78
CMC	210	121	58
Total	38,765	50,441	130

Table 2. Staff Population Breakdown February 1, 2011	
Total Staff	451
Total Male Staff	327
White	294
Black	24
Other	9
Male Unknown Race	0
Total Female Staff	124
White	111
Black	13
Other	0
Female Unknown Race	0
Total CO	269
Total Male CO	224
White	210
Black	11
Other	3
Male CO Unknown Race	0
Total Female CO	45
White	40
Black	5
Other	0
Female CO Unknown Race	0

Table 3.				
Inspector's Report				
January 2010 through December 2010				
Grievance Numbers				
Total Number of Grievances Filed During Year	682			
Total Number of Inmates Who Filed Grievances During Year	335			
Highest Number of Grievances Filed by Single Inmate	43			
Grievances on Hand at Beginning of This Period	28			
Grievances Received during this period	682			
Total	710			
Grievances Completed During This Period	672			
Grievances on Hand at End of This Period	38			
Total	710			
ICR Summary				
Number of Informal Complaints Received	2,333			
Number of Informal Complaint Responses Received	2,303			
Number of Informal Complaint Responses Untimely	532			
Granted				
	W	B	O	Total
Granted – Problem Corrected	52	45	1	98
Granted – Problem Noted, Correction Pending	16	10	0	26
Granted – Problem Noted, Report/Recommendation to the Warden	12	10	0	22
Subtotal Granted	80	65	1	146
Denied				
Denied – Insufficient Evidence to Support Claim	86	92	1	179
Denied – Staff Action Was Valid Exercise of Discretion	95	44	2	141
Denied – No Violation of Rule, Policy, or Law	66	47	0	113
Denied – Not within the Scope of the Grievance Procedure	33	27	1	61
Denied – False Claim	3	0	0	3
Denied – Failure to Use Informal Complaint Procedure	3	5	0	8
Denied – Not within Time Limits	1	7	1	9
Subtotal Denied	287	222	5	514
Withdrawn at Inmate's Request	9	3	0	12
Pending Disposition	12	11	0	23
TOTALS	388	301	6	695
Percent	55.8	43.3	0.9	100
Extensions				
14-Day Extensions	357			
28-Day Extensions	0			

Total	357
-------	-----

Table 4. Use of Force with Racial Breakdown July 2010 through December 2010				
	Black	White	Other	Total
Use of Force Incidents	24	14	2	40
Percentage	60.0	35.0	5.0	100
Action Taken on Use of Force Incidents:				
Assigned to Use of Force Committee for Investigation	0	0	0	0
Logged as "No Further Action Required"	11	5	0	16
Referred to the employee disciplinary process	0	0	0	0
Referred to the Chief Inspector	0	0	0	0
Number of investigations not completed within 30 days and extended				
	0	0	0	0
Number of extended investigations from previous month that were:				
Completed	0	0	0	0
Not Completed	0	0	0	0

Staff is authorized to utilize force per DRC Policy 63-UOF-01 and Administrative Rule 5120-9-01, which lists six general circumstances when a staff member may use less than deadly force against an inmate or third person as follows:

1. Self-defense from physical attack or threat of physical harm.
2. Defense of another from physical attack or threat of physical attack.
3. When necessary to control or subdue an inmate who refuses to obey prison rules, regulations, or orders.
4. When necessary to stop an inmate from destroying property or engaging in a riot or other disturbance.
5. Prevention of an escape or apprehension of an escapee.
6. Controlling or subduing an inmate in order to stop or prevent self-inflicted harm.

Administrative Rule 5120-9-02 requires the Deputy Warden of Operations to review the use of force packet prepared on each use of force incident, and to determine if the type and amount of force was appropriate and reasonable for the circumstances, and if administrative rules, policies, and post orders were followed. The Warden reviews the submission and may refer any use of force incident to the two person use of force committee or to the Chief Inspector. The Warden must refer an incident to a use of force committee or the Chief Inspector. The Warden **must** refer an incident to a use of force committee or the Chief Inspector in the following instances:

- Factual circumstances are not described sufficiently.
- The incident involved serious physical harm.
- The incident was a significant disruption to normal operations.
- Weapons, PR-24 strikes or lethal munitions were used.

Table 5. Use of Force with Racial and Monthly Breakdown July 2010 through December 2010				
	Black	White	Other	Total
July	4	1	0	5
August	4	2	0	6
September	5	1	1	7
October	5	5	1	11
November	2	1	0	3
December	4	4	0	8
Total	24	14	2	40

Table 6. Assaults: Inmate on Inmate February 1, 2010 to February 7, 2011		
Category of Assault	Number of Assaults	Percentage of Assaults
Physical Assault	32	94.1
Harassment Assault	2	5.9
Sexual Assault	0	0
Total	34	100

Table 7. Assaults: Inmate on Staff February 1, 2010 to February 7, 2011		
Category of Assault	Number of Assaults	Percentage of Assaults
Physical Assault	8	66.7
Harassment Assault	4	33.3
Total	12	100

**Table 8.
Inmate Suicide Attempts in 2010 by Institution**

Institution	Jan	Feb	Mar	Apr	May	Jun	Jul	Aug	Sep.	Oct.	Nov.	Dec.	Total
ACI	0	0	0	0	0	0	0	0	0	0	0	0	0
BECI	0	0	0	2	0	2	0	0			1	1	6
CCI	1	0	0	0	0	2	3	1	1	1	1	2	12
CMC	0	0	0	0	0	0	0	1	0	0	0	0	1
CRC	2	0	0	0	0	2	0	1	1	0	0	0	6
DCI	0	0	0	0	0	0	0	0	0	0	0	0	0
FPRC	0	0	0	0	1	0	0	0	0	0	0	0	1
GCI	0	0	1	0	0	0	0	0	0	0	0	0	1
HCF	0	0	0	0	0	0	0	0	0	0	0	0	0
LAECI	0	0	0	0	1	0	0	0	0	0	0	0	1
LECI	0	0	0	0	0	0	0	0	0	0	0	0	0
LOCI	0	0	0	0	0	0	0	0	0	0	0	0	0
LORCI	0	0	0	0	0	1	0	0	1	0	0	0	2
MCI	0	0	0	0	0	0	0	0	0	0	0	0	0
MACI	0	0	0	1	0	0	1	0	1	0	1	0	4
MANCI	0	1	2	0	0	0	0	0	0	1	1	1	6
NCCI	0	0	1	1	1	0	2	0	0	0	0	0	5
NCCTF	0	0	0	0	0	0	0	0	0	0	0	0	0
NCI	0	0	1	0	0	0	0	0	0	1	0	0	2
NEPRC	0	0	0	0	0	0	0	0	0	0	0	0	0
OCF	0	0	0	0	0	0	0	0	0	1	0	0	1
ORW	0	0	0	0	1	1	1	0	0	0	4	5	12
OSP	0	0	1	0	0	0	0	0	0	0	0	0	1
PCI	0	0	0	0	0	0	0	0	0	0	0	0	0
RCI	1	0	0	1	0	0	0	0	0	0	0	0	2
RICI	0	1	0	0	0	0	0	0	0	0	0	0	1
SCI	0	0	0	0	0	0	0	0	0	0	0	0	0
SOCF	0	0	0	0	0	0	1	0	0	1	0	0	2
TCI	0	0	1	0	1	0	0	0	0	0	0	0	2
TOCI	0	0	0	0	0	0	0	0	0	0	0	2	2
WCI	0	0	0	0	1	1	0	0	0	0	1	0	3
TOTAL	4	2	7	5	6	9	8	3	4	5	9	11	73

Table 9.**Investigator Monthly Report Summary by Type of Investigation
July 2010 to December 2010**

Investigations	Cases Initiated during the Period
Drugs (Staff/Inmate)	0
Drugs (Inmate/Visitor)	0
Drugs (Mail/Package)	0
Drugs (Staff)	0
Drugs (Other)	8
Positive Urinalysis	28
Staff/Inmate Relationship	2
Staff Misconduct	0
Assault-(Inmate on Staff)	0
Assault (Inmate on Inmate)	4
Sexual Assault (Inmate on Inmate)	0
Other	3
Background Investigations	15
Total	60

Table 10. Medical Services July 2010 through December 2010							
	July	August	September	October	November	December	Total
Sick Call							
Nurse Intake Screen	101	90	74	111	64	102	542
Nurse Referrals to Doctor	155	184	188	124	144	135	930
New Intakes Referred to Physician	101	90	74	111	64	102	542
Nurse Sick Call and Assessments	762	703	694	718	620	824	4,321
Doctor Sick Call	371	442	305	115	295	284	1,812
Doctor History and Physicals Done	21	87	31	0	0	55	194
Doctor No Shows	0	0	0	0	0	0	0
Emergency Triage							
Sent to local ER	7	9	9	9	3	11	48
Sent to OSU ER	5	1	5	1	1	0	13
Sent from Local to OSU	5	5	5	9	0	8	32
Inmate Emergencies Treated On Site	70	51	54	62	27	30	294
Staff Treated	42	24	24	41	8	22	161
Visitors Treated	0	0	0	0	0	0	0
Infirmary Care							
Bed Days Used for Medical	11	13	9	13	7	56	109
Bed Days Used for Mental	0	11	13	5	3	9	41
Bed Days Used for Security	11	11	60	3	0	11	96
Dental Care							
Scheduled Visits	467	353	373	377	342	371	2,283
Emergency Visits	33	40	28	25	41	37	204
Total Visits	374	307	320	268	320	364	1,953
No Shows	0	0	0	0	0	0	0
AMAs	13	6	8	8	6	7	48
Specialty Care On Site							
Optometry							

Consults	0	0	0	0	0	0	0
Inmates Seen	56	76	83	159	79	84	537
Emergencies Seen	0	0	0	0	0	0	0
Hours On Site	12	12	18	24	12	12	90
Podiatry							
Consults	0	0	0	0	0	0	0
Inmates Seen	37	44	72	93	66	77	389
Emergencies Seen	0	0	0	0	0	0	0
Hours On Site	6	6	9	12	9	9	51
OB Gyn							
Consults	0	0	0	0	0	0	0
Inmates Seen	0	0	0	0	0	0	0
Emergencies Seen	0	0	0	0	0	0	0
Hours On Site	0	0	0	0	0	0	0
Pharmacy							
Medical Refills	3,941	4,093	4,138	3,734	3,950	3,765	23,621
Mental Refills	469	545	525	448	517	564	3,068
Medical New Prescriptions	2,641	2,631	2,382	2,389	2,241	2,821	15,105
Mental New Prescriptions	429	448	382	473	465	399	2,596
Total Prescriptions	7,480	7,717	7,427	7,044	7,173	7,549	44,390
Medical Controlled Prescriptions	9	9	9	11	7	9	54
Mental Controlled Prescriptions	0	0	0	0	0	0	0
Lab Data							
Blood Draws	648	654	586	502	440	507	3,337
DNA Blood Draws	0	0	0	0	0	0	0
Mental Health Blood Draws	51	47	30	51	41	34	254
EKGs	40	41	35	51	38	26	231
Non CMC X-Rays	70	69	46	39	41	43	308
Infections Disease Data							
Number Inmates Tested for TB	0	0	2,037	2	8	0	2,047
Positive PPD Test	0	0	2	0	0	0	2
Staff PPD	6	5	399	29	18	0	457
Inmates Completed INH	2	2	1	3	2	1	11
Inmates Incomplete INH	18	17	17	19	16	18	105
Inmates Refusing	0	0	1	1	1	1	4

CIIC Report: Marion Correctional Institution 38

INH							
HIV Positive Inmates	0	0	0	0	0	26	26
Inmate HIV Conversions	0	0	0	0	0	0	0
Deaths							
Deaths Expected	0	0	0	1	0	0	1
Deaths Unexpected	0	0	0	0	0	0	0
Suicides	0	0	0	0	0	0	0
Homicides	0	0	0	0	0	0	0
Deaths at Local Hospital	0	0	0	0	0	0	0
Deaths at OSU	0	0	0	1	0	0	1
Deaths at CMC	0	0	0	0	0	0	0

Table 11.
Mental Health Caseload by Institution
November 2010

Institution	Percent of Total Population on Mental Health Caseload	November 29, 2010 Population Count	Number of Inmates on Mental Health Caseload November 2010
Oakwood CF	67.8	180	122
Northeast Pre-Release Cent.	51.9	522	271
Ohio Reformatory for Women	50.0	2,655	1,327
Franklin Pre-Release Center	49.0	447	219
Southern Ohio CF	32.5	1,421	462
Toledo CI	26.1	1,150	300
Trumbull CI	26.1	1,397	364
Chillicothe CI	25.2	2,874	725
Hocking CF	24.8	483	120
Allen CI	24.6	1,343	330
Marion CI	21.5	2,277	489
Corrections Medical Center	21.1	128	27
Belmont CI	20.9	2,675	558
Lorain CI	20.2	1,863	377
Richland CI	19.9	2,524	502
North Central CI	19.8	2,293	454
Mansfield CI	19.4	2,486	483
Madison CI	18.0	2,301	415
Correctional Reception Cent.	17.8	1,444	257
North Coast Corr. Treat. Facility	17.4	691	120
Warren CI	17.4	1,383	240
London CI	17.2	2,542	437
Southeastern CI	16.3	1,533	250
Ohio State Penitentiary	16.2	563	91
Grafton CI	16.1	1,501	242
Lebanon CI	16.0	2,817	451
Noble CI	15.8	2,460	389
Pickaway CI	15.6	2,145	335
Lake Erie CI	14.1	1,493	211
Ross CI	13.8	2,593	358
Dayton CI	0.1	809	1
TOTALS	21.4	50,993	10,927

Table 12. Seriously Mentally Ill by Institution November 2010		
Institution	Number of Seriously Mentally Ill	Percent
Ohio Reformatory for Women (Females)	682	14.4
Chillicothe Correctional Institution	367	7.8
Belmont Correctional Institution	249	5.3
Southern Ohio Correctional Facility	214	4.5
Lebanon Correctional Institution	208	4.4
Allen Correctional Institution	192	4.1
Mansfield Correctional Institution	190	4.0
Correctional Reception Center	182	3.8
London Correctional Institution	178	3.8
Madison Correctional Institution	177	3.7
Warren Correctional Institution	173	3.7
Marion Correctional Institution	168	3.6
Noble Correctional Institution	163	3.4
North Central Correctional Institution	148	3.1
Lorain Correctional Institution	146	3.1
Pickaway Correctional Institution	139	2.9
Northeast Pre-Release Center (Females)	135	2.9
Grafton Correctional Institution	130	2.7
Southeastern Correctional Institution	126	2.7
Richland Correctional Institution	120	2.5
Ross Correctional Institution	105	2.2
Trumbull Correctional Institution	104	2.2
Franklin Pre-Release Center (Females)	101	2.1
Toledo Correctional Institution	94	2.0
Oakwood Correctional Facility	93	2.0
Lake Erie Correctional Institution	78	1.6
Hocking Correctional Facility	38	0.8
Corrections Medical Center	15	0.3
Ohio State Penitentiary	9	0.2
North Coast Correctional Treatment Facility	4	0.1
Dayton Correctional Institution	0	0
Total	4,728	100%

Table 13. Monthly Academic Enrollment and Academic Waitlist November 2010		
	Monthly Academic Enrollment - November 2010	YTD Academic Waitlist - November 2010
ACI/OCF	121	148
BECI	251	1088
CCI	488	320
CMC	0	0
CRC	145	142
DCI/MEPRC	116	36
FPRC	87	118
GCI	132	106
HCF	58	116
LAECI	184	251
LECI	168	760
LOCI	330	197
LORCI	126	889
MACI	189	621
MANCI	154	616
MCI	240	239
NCI	236	898
NCCI	304	354
NCCTF	83	151
NEPRC	106	78
ORW	489	821
OSP	86	93
PCI	345	630
RICI	287	500
RCI	163	318
SCI	243	416
SOCF	94	218
TOCI	108	184
TCI	251	168
WCI	117	196
Total	5701	10672

Table 14. GEDs Passed and Inmates on Academic Waitlist November 2010		
	GEDs PASSED - YTD as of November 2010	Inmates Without GED and on Academic Waitlist - YTD November 2010
ACI/OCF	11	148
BECI	51	1,088
CCI	49	320
CMC	0	0
CRC	12	142
DCI/MEPRC	4	36
FPRC	22	118
GCI	18	106
HCF	1	116
LAECI	22	251
LECI	0	760
LOCI	22	197
LORCI	11	889
MACI	26	621
MANCI	29	616
MCI	26	239
NCI	73	898
NCCI	54	354
NCCTF	27	151
NEPRC	4	78
ORW	48	821
OSP	13	93
PCI	14	630
RICI	54	500
RCI	43	318
SCI	35	416
SOCF	38	218
TOCI	8	184
TCI	27	168
WCI	14	196
TOTAL	756	10,672

CIIC Report: Marion Correctional Institution 44

ESL (English as Second Language)										
Career Enhancement	21		102			19	91			
					50%	100%	50%	100%	-	-
Apprenticeship	25		31		0	0	3	0		
	For Month	< 22	YTD	Waiting List	Program Cert.		1-Year Cert.		2-Year Cert.	
					Term	YTD	Term	YTD	Term	YTD
Advanced Job Training	109	0	122		0	0	2	3	3	5
	For Month	< 22	YTD	Waiting List	# of Certificates		% Attained Goals			
					Month	YTD	QTR	YTD		
Total GEDs given	15		47							
Total GEDs passed	12		38							
Literacy Tutors	12		14							
Other Tutors	9		10							
Tutors Trained	16		24							
Tutor Hours	508		5,861							
Children served in Reading Room	110		437							
Narrator Hours	77		265							
Work Keys	0		0							

Table 16. CIIC Contacts with Institutional Breakdown (DRC) 2009 through 2010		
Institution	Number of Contacts	Percent
Southern Ohio Correctional Facility	807	17.6%
Mansfield Correctional Institution	378	8.2%
Chillicothe Correctional Institution	261	5.7%
Lebanon Correctional Institution	248	5.4%
Marion Correctional Institution	246	5.4%
Pickaway Correctional Institution	235	5.1%
Toledo Correctional Institution	206	4.5%
Madison Correctional Institution	179	3.9%
London Correctional Institution	169	3.7%
Grafton Correctional Institution	149	3.3%
Warren Correctional Institution	148	3.2%
Lake Erie Correctional Institution	130	2.8%
Trumbull Correctional Institution	129	2.8%
North Central Correctional Institution	125	2.7%
Ohio Reformatory for Women	116	2.5%
Ohio State Penitentiary	114	2.5%
Allen Correctional Institution	111	2.4%
Ross Correctional Institution	107	2.3%
Belmont Correctional Institution	97	2.1%
Lorain Correctional Institution	76	1.7%
Hocking Correctional Institution	66	1.4%
Other (County or Local Jails)	63	1.4%
Oakwood Correctional Facility	62	1.4%
Southeastern Correctional Institution	58	1.3%
Richland Correctional Institution	55	1.2%
Noble Correctional Institution	54	1.2%
North Coast Correctional Treatment Facility	52	1.1%
Northeast Ohio Correctional Center	41	0.9%
Correctional Reception Center	37	0.8%
Northeast Pre-Release Center	26	0.6%
Dayton Correctional Institution	19	0.4%
Corrections Medical Center	8	0.2%
Franklin Pre-Release Center	8	0.2%
Montgomery Education Pre-release Center	6	0.1%
TOTAL	4,586	100%

Table 17. CIIC Concerns with Institutional Breakdown (DRC) 2009 through 2010		
Institution	Number of Concerns	Percent
Southern Ohio Correctional Facility	3,908	20.5%
Mansfield Correctional Institution	1,626	8.5%
Chillicothe Correctional Institution	1,151	6.0%
Lebanon Correctional Institution	1,024	5.4%
Toledo Correctional Institution	1,007	5.2%
Pickaway Correctional Institution	970	5.1%
Marion Correctional Institution	803	4.2%
Madison Correctional Institution	721	3.8%
North Central Correctional Institution	657	3.4%
London Correctional Institution	647	3.4%
Warren Correctional Institution	641	3.4%
Trumbull Correctional Institution	565	3.0%
Grafton Correctional Institution	510	2.7%
Ohio State Penitentiary	474	2.5%
Lake Erie Correctional Institution	452	2.4%
Ohio Reformatory for Women	445	2.3%
Ross Correctional Institution	400	2.1%
Allen Correctional Institution	386	2.0%
Southeastern Correctional Institution	324	1.7%
Belmont Correctional Institution	305	1.6%
Oakwood Correctional Facility	272	1.4%
Lorain Correctional Institution	236	1.2%
Hocking Correctional Institution	235	1.2%
Northeast Ohio Correctional Center	231	1.2%
Richland Correctional Institution	226	1.2%
Other (County or Local Jails)	201	1.1%
Noble Correctional Institution	196	1.0%
North Coast Correctional Treatment Facility	157	0.8%
Correctional Reception Center	91	0.5%
Northeast Pre-Release Center	83	0.4%
Dayton Correctional Institution	43	0.2%
Corrections Medical Center	26	0.1%
Montgomery Education Pre-release Center	26	0.1%
Franklin Pre-Release Center	26	0.1%
TOTAL	19,069	100%

Table 18. Top Ten Reported Concerns to CIIC (Marion CI) January 1, 2009 through December 31, 2010	
Health Care	156
Supervision	110
Staff Accountability	97
Non-Grievable	75
Inmate Grievance Procedure	62
Personal Property	38
Institutional Assignment	36
Special Management Housing	25
Housing Assignment	21
Discrimination	20

Table 19. Breakdown of Top Three Reported Concerns (Marion CI) January 1, 2009 through December 31, 2010	
Health Care	
Delay/Denial of medication	32
Disagree with diagnosis/treatment	16
Medical aide/device	8
Eye Glasses	7
Medical Restriction	6
Medical Records	3
Forced Medical Testing	2
Medical co-pay	2
Other	2
Prosthetic Device	1
Supervision	
Unprofessional conduct	25
Harassment	20
Conduct report for no reason	14
Intimidation/threats	14
Abusive language	13
Racial or ethnic slurs	7
Retaliation for voicing complaints	7
Retaliation for filing grievance	6
Privacy violations	3
Other	1
Staff Accountability	
Failure to follow policies	41
Failure to respond to communication	24
Failure to perform job duties	23
Access to staff	6
Other	3

B. INSPECTION CHECKLISTS

Inspector: Sen. Cliff Hite

Facility: MCI
Date: 2-7-11

AREA INSPECTED: FOOD SERVICES

			COMMENTS
1. Does the area appear clean?	YES	NO	
2. Does the equipment appear to be clean?	YES	NO	
3. Are there any standing puddles of water on the ground? Is there ice on the floor of coolers?	YES	NO	ice on floor staff corrected
4. Is a chit system used to issue tools to inmate workers?	YES	NO	
5. Is the quantity of the food served according to the menu?	YES	NO	
6. Are all inmate workers trained regarding proper hygiene?	YES	NO	
7. Is soap available in the inmate/staff bathroom?	YES	NO	
8. Are all inmate workers and staff wearing hair nets?	YES	NO	
9. Are all inmate workers and staff handling food wearing gloves?	YES	NO	
10. How many inmate workers are assigned to the food services department?	174		usually around 200
11. Are all inmate workers trained on proper handling of equipment?	YES	NO	
12. Are knives issued according to procedure?	YES	NO	locked when not used
13. Are inmates supervised while using knives?	YES	NO	chained to the table
14. Is fire equipment operational and inspected according to schedule?	YES	NO	
15. Is stored food wrapped and dated?	YES	NO	
16. Are containers of food stored off of the ground?	YES	NO	

CIIC Report: Marion Correctional Institution 50

Inspector: Sen Cliffe

Facility: MCI
Date: 2-7-11

17. Is a safe distance maintained from the top of the stored food to the ceiling?	<input checked="" type="radio"/> YES	<input type="radio"/> NO	
18. Are there any current pest issues?	<input type="radio"/> YES	<input checked="" type="radio"/> NO	At this time, no (winter time)
19. What is the date of the last inspection by health inspectors? Did the facility pass?			Sept. 23 2010.
20. How often is the cooking equipment sanitized?	each shift		
21. Is a kite log maintained?	<input type="radio"/> YES	<input checked="" type="radio"/> NO	not any more but food service manager gets back to them
22. Are all chemicals secured?	<input checked="" type="radio"/> YES	<input type="radio"/> NO	
23. Are dishes/utensils washed/rinsed at appropriate temperatures (was 150 degrees/rinse 180 degrees)?	<input checked="" type="radio"/> YES	<input type="radio"/> NO	
24. Have there been any recent concerns regarding inmate health issues due to food?	<input type="radio"/> YES	<input checked="" type="radio"/> NO	
25. Is the trash dock free of odors, loose garbage bags, and bugs?	<input checked="" type="radio"/> YES	<input type="radio"/> NO	
26. Do the coolers and freezers appear orderly and clean?	<input checked="" type="radio"/> YES	<input type="radio"/> NO	
27. Are trays scraped in a different area from the food serving line?	<input checked="" type="radio"/> YES	<input type="radio"/> NO	
ADDITIONAL COMMENTS:			

CIIC Report: Marion Correctional Institution 51

Inspector: RTG

Facility: MCI
Date: 2-7-11

AREA INSPECTED: HOUSING

HOUSING UNIT: 11 - INTERMEDIATE DORM LOWER

		COMMENTS
1. Do living areas appear clean?	YES NO	
2. How many toilets are inoperative?	NO	0
3. How often are toilet facilities sanitized?		4x DAY
4. Is soap available in each bathroom?	<input checked="" type="radio"/> YES NO	BARBS Reminders to wash hands
5. Do shower facilities appear to be clean?	<input checked="" type="radio"/> YES NO	Peeling paint/peeling tiles walls/stainless steel clean
6. How often are shower facilities cleaned?		4x DAY
7. What cleaning materials are used to clean shower facilities?		70 CLEANER window cleaner AP CLEANER WASH DISINFECTANT
8. What is the room temperature?		70° - 72°
9. Are cleaning materials kept secure?	<input checked="" type="radio"/> YES NO	LOCKED IN BOX
10. Is the CIIC memo posted?	<input checked="" type="radio"/> YES NO	
11. Are the Commissary, programs, and library schedules posted?	<input checked="" type="radio"/> YES NO	
12. Are kites available on the unit?	<input checked="" type="radio"/> YES NO	
13. Are informal complaint forms available on the unit?	<input checked="" type="radio"/> YES NO	
14. How many shakedown are performed on each shift?		2 per shift
15. Are cell windows clear of obstruction? / Are views of beds in dorms obstructed?	<input checked="" type="radio"/> YES NO	

Inspector: CSTC

Facility: MCI
Date: 2-7-6

16. Is the atmosphere of the unit calm or disruptive?		calm/quiet
17. Are officers performing regular security checks?	<input checked="" type="radio"/> YES <input type="radio"/> NO	30 min - staggered - logged on computer
18. Are laundry facilities operational?	<input type="radio"/> YES <input type="radio"/> NO	sent to central laundry
19. Are lights turned on all night?	<input type="radio"/> YES <input checked="" type="radio"/> NO	blue lights on hallway

ADDITIONAL COMMENTS (including inmate communication):

- CUD LMS (I) RE: COURT COSTS BEING DEDUCTED FROM ACCOUNTS WHEN THEY ARE NOT SUPPOSED TO
- (I) C/O 30Y PRODUCTS BEING USED IN FOOD SERVICE CAUSES HIM UPSET STOMACH
- NOT GETTING MINIMUM PUNISHMENTS
- (I) STATUS LAP SYSTEM IS NOT MAINTAINED - NOT BALANCED
- (I) MEDICAL IS "COMPLETE CRAP" - NO ISSUE GETS ADDRESSED
- ASATRU (R) PUT IN REQUEST FOR CLOTHING FROM OUTSIDE ON STREET TELLING THEM TO PARTICIPATE w/ OTHER PAGAN RELIGIONS (i.e. WICANS).

Inspector: BTC

Facility: MLI
Date: 2-9-11

AREA INSPECTED: HOUSING

HOUSING UNIT: 2 - ct = 99

		COMMENTS
1. Do living areas appear clean?	<input checked="" type="radio"/> YES NO	
2. How many toilets are inoperative?		no
3. How often are toilet facilities sanitized?		2x on second shift
4. Is soap available in each bathroom?	<input checked="" type="radio"/> YES NO	
5. Do shower facilities appear to be clean?	<input checked="" type="radio"/> YES NO	cold water
6. How often are shower facilities cleaned?		yes
7. What cleaning materials are used to clean shower facilities?		APCLENOR TBCLMOR WUXEX MBSA
8. What is the room temperature?		70's est.
9. Are cleaning materials kept secure?	<input checked="" type="radio"/> YES NO	
10. Is the CIIC memo posted?	YES NO	
11. Are the Commissary, programs, and library schedules posted?	<input checked="" type="radio"/> YES NO	
12. Are kites available on the unit?	<input checked="" type="radio"/> YES NO	
13. Are informal complaint forms available on the unit?	<input checked="" type="radio"/> YES NO	
14. How many shakedown are performed on each shift?		2 per shift
15. Are cell windows clear of obstruction? / Are views of beds in dorms obstructed?	<input checked="" type="radio"/> YES NO	

Inspector: ATC

Facility: MCS
Date: 2-7-11

16. Is the atmosphere of the unit calm or disruptive?		LOUDER, BUT NOT DISRUPTIVE
17. Are officers performing regular security checks?	YES <input checked="" type="radio"/> NO <input type="radio"/>	20-30 min
18. Are laundry facilities operational?	YES <input type="radio"/> NO <input checked="" type="radio"/>	central laundry
19. Are lights turned on all night?	YES <input checked="" type="radio"/> NO <input type="radio"/>	
ADDITIONAL COMMENTS (including inmate communication):		
<p><input checked="" type="radio"/> C/O's don't permit privileges on weekends</p> <p>- WATER TEMP ALWAYS CLEAN</p> <p>- NO TOILET PAPER for several days <input checked="" type="radio"/> -</p> <p>- UNIT inspection process isnt fair This unit always las</p> <p>- F/M CO ACTS DISRESPECTFUL TOWARDS <input checked="" type="radio"/> - CALLS <input checked="" type="radio"/> NAMES (NOT PROPER) "KNOCKED IT UP" - "GODFBALL"</p>		

Inspector: BTG

Facility: MOI

Date: 2-7-11

AREA INSPECTED: HOUSING

HOUSING UNIT: 300xw (87)

		COMMENTS
1. Do living areas appear clean?	<input checked="" type="radio"/> YES NO	
2. How many toilets are inoperative?		1 down at 1 week
3. How often are toilet facilities sanitized?		3x Day
4. Is soap available in each bathroom?	<input checked="" type="radio"/> YES NO	
5. Do shower facilities appear to be clean?	<input checked="" type="radio"/> YES NO	old tiles need scrubbing floors
6. How often are shower facilities cleaned?		3x Day
7. What cleaning materials are used to clean shower facilities?		murphy's cleaner mop cleaner crystal cleaner
8. What is the room temperature?		73-75°
9. Are cleaning materials kept secure?	<input checked="" type="radio"/> YES NO	
10. Is the CIIC memo posted?	YES NO	
11. Are the Commissary, programs, and library schedules posted?	<input checked="" type="radio"/> YES NO	
12. Are kites available on the unit?	<input checked="" type="radio"/> YES NO	
13. Are informal complaint forms available on the unit?	<input checked="" type="radio"/> YES NO	o/o station
14. How many shakedown are performed on each shift?		2/SHIFT
15. Are cell windows clear of obstruction? / Are views of beds in dorms obstructed?	<input checked="" type="radio"/> YES NO	

Inspector: BTM

Facility: MOI
Date: 2-9-11

16. Is the atmosphere of the unit calm or disruptive?		CALM
17. Are officers performing regular security checks?	<input checked="" type="radio"/> YES NO	STAFF DO NOT RUN 30 MINUTS
18. Are laundry facilities operational?	YES <input checked="" type="radio"/> NO	Central laundry
19. Are lights turned on all night?	YES <input checked="" type="radio"/> NO	ONLY BLUE COURT LIGHTS LEFT ON DURING NIGHT
ADDITIONAL COMMENTS (including inmate communication):		
<p>WATER TOO COLD/HOT - NO REGULAR TEMP</p> <p>PER STAFF - MARKING SYSTEM DETERMINED BY HOW CLEAN DORM IS, (2) PER IT IS BASED ON POLITICS RATHER THAN ACTUAL CLEANLINESS</p> <p>-STAFF TRY TO DEVELOP A GOOD rapport by showing respect - prompts rule following - despite being a sanction dorm, guys pretty calm</p>		

Inspector: Furderer

Facility: MCI
Date: 2-8-11

AREA INSPECTED: HOUSING

HOUSING UNIT: 4 Dorm

		COMMENTS
1. Do living areas appear clean?	<input checked="" type="radio"/> YES NO	
2. How many toilets are inoperative?	none	
3. How often are toilet facilities sanitized?	daily	
4. Is soap available in each bathroom?	<input checked="" type="radio"/> YES NO	
5. Do shower facilities appear to be clean?	<input checked="" type="radio"/> YES NO	
6. How often are shower facilities cleaned?	daily	
7. What cleaning materials are used to clean shower facilities?	Same as other unit	
8. What is the room temperature?	Front - 69° Back - 63°	
9. Are cleaning materials kept secure?	<input checked="" type="radio"/> YES NO	
10. Is the CIIC memo posted?	<input checked="" type="radio"/> YES NO	
11. Are the Commissary, programs, and library schedules posted?	<input checked="" type="radio"/> YES NO	
12. Are kites available on the unit?	<input checked="" type="radio"/> YES NO	
13. Are informal complaint forms available on the unit?	<input checked="" type="radio"/> YES NO	
14. How many shakedowns are performed on each shift?	two per shift	
15. Are cell windows clear of obstruction? / Are views of beds in dorms obstructed?	YES <input checked="" type="radio"/> NO	

Inspector: Furderer

Facility: MCI
Date: 2-8-11

16. Is the atmosphere of the unit calm or disruptive?	Calm	
17. Are officers performing regular security checks?	<input checked="" type="radio"/> YES NO	
18. Are laundry facilities operational?	<input checked="" type="radio"/> YES NO	Centralized
19. Are lights turned on all night?	YES <input checked="" type="radio"/> NO	dimmed blue lights on
<p>ADDITIONAL COMMENTS (including inmate communication):</p> <ul style="list-style-type: none"> - 40 and over dorm - one maintenance order pending for electrical issue 		

Inspector: GTC

Facility: MCI
Date: 2-8-11

AREA INSPECTED: HOUSING

HOUSING UNIT: 5 (120)

		COMMENTS
1. Do living areas appear clean?	<input checked="" type="radio"/> YES NO	Check smells dorm
2. How many toilets are inoperative?		all working
3. How often are toilet facilities sanitized?		at least 4/day
4. Is soap available in each bathroom?	<input checked="" type="radio"/> YES NO	
5. Do shower facilities appear to be clean?	<input checked="" type="radio"/> YES NO	
6. How often are shower facilities cleaned?		at least 4/day
7. What cleaning materials are used to clean shower facilities?		at least 4/day MP/TS/mesa
8. What is the room temperature?		90°
9. Are cleaning materials kept secure?	<input checked="" type="radio"/> YES NO	
10. Is the CIIC memo posted?	<input checked="" type="radio"/> YES NO	
11. Are the Commissary, programs, and library schedules posted?	<input checked="" type="radio"/> YES NO	
12. Are kites available on the unit?	<input checked="" type="radio"/> YES NO	
13. Are informal complaint forms available on the unit?	<input checked="" type="radio"/> YES NO	
14. How many shakedown are performed on each shift?		1 on first - completed 2 on second
15. Are cell windows clear of obstruction? / Are views of beds in dorms obstructed?	<input checked="" type="radio"/> YES NO	

CIIC Report: Marion Correctional Institution 61

Inspector: Furderer

Facility: MCI
Date: 2-8-11

AREA INSPECTED: HOUSING

HOUSING UNIT: 6 Dorm

		COMMENTS
1. Do living areas appear clean?	<input checked="" type="radio"/> YES NO	
2. How many toilets are inoperative?	none	
3. How often are toilet facilities sanitized?	daily	
4. Is soap available in each bathroom?	<input checked="" type="radio"/> YES NO	
5. Do shower facilities appear to be clean?	<input checked="" type="radio"/> YES NO	
6. How often are shower facilities cleaned?	daily	
7. What cleaning materials are used to clean shower facilities?	Same as other units	
8. What is the room temperature?	average about 65° - 71° 65° - 69°	measured on every shift
9. Are cleaning materials kept secure?	<input checked="" type="radio"/> YES NO	
10. Is the CIIC memo posted?	<input checked="" type="radio"/> YES NO	
11. Are the Commissary, programs, and library schedules posted?	<input checked="" type="radio"/> YES NO	
12. Are kites available on the unit?	<input checked="" type="radio"/> YES NO	- officer's desk
13. Are informal complaint forms available on the unit?	<input checked="" type="radio"/> YES NO	officer's desk
14. How many shakedowns are performed on each shift?	two per shift	
15. Are cell windows clear of obstruction? / Are views of beds in dorms obstructed?	YES <input checked="" type="radio"/> NO	

Inspector: Furderer

Facility: MCI
Date: 2-8-11

16. Is the atmosphere of the unit calm or disruptive?	Calm	
17. Are officers performing regular security checks?	<input checked="" type="radio"/> YES NO	
18. Are laundry facilities operational?	<input checked="" type="radio"/> YES NO	Centralized
19. Are lights turned on all night?	YES <input checked="" type="radio"/> NO	dimmed at night - blue lights turned on
ADDITIONAL COMMENTS (including inmate communication):		
<p>-inmate communication</p> <ul style="list-style-type: none"> - why does institution throw food out - a lot of inmates complain about small portions - budget issues and throwing food away 		

Inspector: Furderer

Facility: MCI
Date: 2-8-11

AREA INSPECTED: HOUSING

HOUSING UNIT: 7 Dorm

		COMMENTS
1. Do living areas appear clean?	<input checked="" type="radio"/> YES NO	
2. How many toilets are inoperative?	none	
3. How often are toilet facilities sanitized?	multiple times per day	every shift
4. Is soap available in each bathroom?	<input checked="" type="radio"/> YES NO	
5. Do shower facilities appear to be clean?	<input checked="" type="radio"/> YES NO	chipped paint
6. How often are shower facilities cleaned?	multiple times per day	every shift
7. What cleaning materials are used to clean shower facilities?	Same as other units	
8. What is the room temperature?	Previous day Front - 75° Back - 72°	had not been taken yet
9. Are cleaning materials kept secure?	<input checked="" type="radio"/> YES NO	
10. Is the CIIC memo posted?	<input checked="" type="radio"/> YES NO	
11. Are the Commissary, programs, and library schedules posted?	<input checked="" type="radio"/> YES NO	
12. Are kites available on the unit?	<input checked="" type="radio"/> YES NO	
13. Are informal complaint forms available on the unit?	<input checked="" type="radio"/> YES NO	
14. How many shakedown are performed on each shift?	two per shift	third shift does none
15. Are cell windows clear of obstruction? / Are views of beds in dorms obstructed?	YES <input checked="" type="radio"/> NO	

Inspector: Furderer

Facility: MCI
Date: 2-8-11

16. Is the atmosphere of the unit calm or disruptive?	Calm	
17. Are officers performing regular security checks?	<input checked="" type="radio"/> YES NO	
18. Are laundry facilities operational?	<input checked="" type="radio"/> YES NO	Centralized
19. Are lights turned on all night?	YES <input checked="" type="radio"/> NO	

ADDITIONAL COMMENTS (including inmate communication):

- inmates relayed numerous medical concerns
 - Stated that they only get one catheter every two weeks and have nothing to clean them with
 - inmate stated he has been to the hospital several times and can't get anything done. He relayed he has memory and heart problems
 - inmate has rash and does not get enough lotion
 - inmate com that his meds were taken and he can't afford them through commissary
 - inmate mentioned staff do not follow OSU recommendations
 - inmate stated HCA is not consistent
 - inmate relayed this is a med dorm, but they don't have a nurse. He mentioned his walker was taken and guards have access to medical files.
- inmates relayed concerns about the water temperature

Inspector: Furderer

Facility: MCII
Date: 2-7-11

AREA INSPECTED: HOUSING

HOUSING UNIT: 8 Dorm

		COMMENTS
1. Do living areas appear clean?	<input checked="" type="radio"/> YES NO	
2. How many toilets are inoperative?	none	
3. How often are toilet facilities sanitized?	three times per day	
4. Is soap available in each bathroom?	<input checked="" type="radio"/> YES NO	
5. Do shower facilities appear to be clean?	YES <input checked="" type="radio"/> NO	
6. How often are shower facilities cleaned?	three times per day	
7. What cleaning materials are used to clean shower facilities?	-All purpose cleaner -Bowl cleaner -CA MRSA Dis -glass cleaner	
8. What is the room temperature?	Front - 69° Back - 71°	
9. Are cleaning materials kept secure?	<input checked="" type="radio"/> YES NO	
10. Is the CIIC memo posted?	<input checked="" type="radio"/> YES NO	
11. Are the Commissary, programs, and library schedules posted?	<input checked="" type="radio"/> YES NO	
12. Are kites available on the unit?	<input checked="" type="radio"/> YES NO	
13. Are informal complaint forms available on the unit?	<input checked="" type="radio"/> YES NO	
14. How many shakedown are performed on each shift?	at least two	
15. Are cell windows clear of obstruction? / Are views of beds in dorms obstructed?	YES <input checked="" type="radio"/> NO	

Inspector: Furderer

Facility: MCI
Date: 2-7-11

16. Is the atmosphere of the unit calm or disruptive?	Calm	
17. Are officers performing regular security checks?	<input checked="" type="radio"/> YES NO	
18. Are laundry facilities operational?	<input checked="" type="radio"/> YES NO	centralized laundry
19. Are lights turned on all night?	YES <input checked="" type="radio"/> NO	
ADDITIONAL COMMENTS (including inmate communication):		
- ceiling in bathroom decrepit		

Inspector: Furderer

Facility: MCI
Date: 2-7-11

AREA INSPECTED: HOUSING

HOUSING UNIT: A Dorm

		COMMENTS
1. Do living areas appear clean?	<input checked="" type="radio"/> YES NO	
2. How many toilets are inoperative?	none	
3. How often are toilet facilities sanitized?	once per day	
4. Is soap available in each bathroom?	<input checked="" type="radio"/> YES NO	
5. Do shower facilities appear to be clean?	YES <input checked="" type="radio"/> NO	chipped paint
6. How often are shower facilities cleaned?	once per day	
7. What cleaning materials are used to clean shower facilities?	Same as other units	
8. What is the room temperature?	Front - 79° Back - 63°	
9. Are cleaning materials kept secure?	<input checked="" type="radio"/> YES NO	
10. Is the CIIC memo posted?	YES <input checked="" type="radio"/> NO	
11. Are the Commissary, programs, and library schedules posted?	<input checked="" type="radio"/> YES NO	
12. Are kites available on the unit?	<input checked="" type="radio"/> YES NO	
13. Are informal complaint forms available on the unit?	<input checked="" type="radio"/> YES NO	
14. How many shakedowns are performed on each shift?	at least two	
15. Are cell windows clear of obstruction? / Are views of beds in dorms obstructed?	<input checked="" type="radio"/> YES NO	

Inspector: Furderer

Facility: MCI
Date: 2-7-11

16. Is the atmosphere of the unit calm or disruptive?	Calm	
17. Are officers performing regular security checks?	<input checked="" type="radio"/> YES NO	
18. Are laundry facilities operational?	<input checked="" type="radio"/> YES NO	Centralized
19. Are lights turned on all night?	YES <input checked="" type="radio"/> NO	Security lights dimmed
<p>ADDITIONAL COMMENTS (including inmate communication):</p> <ul style="list-style-type: none"> -inmate communication -issue with back and broken eyeglasses -took pain meds -Central Office believes everything staff say -inmate communication -broke out with condition -cleared up -after second break out medical said they were not treating rash -going on a few months and still not cleared up -have to pay co-pay again for same issue 		

Inspector: Furderer

Facility: MCI
Date: 2-8-11

AREA INSPECTED: HOUSING

HOUSING UNIT: B Dorm

		COMMENTS
1. Do living areas appear clean?	<input checked="" type="radio"/> YES NO	
2. How many toilets are inoperative?	none	
3. How often are toilet facilities sanitized?	daily	
4. Is soap available in each bathroom?	<input checked="" type="radio"/> YES NO	
5. Do shower facilities appear to be clean?	<input checked="" type="radio"/> YES NO	flooring issues
6. How often are shower facilities cleaned?	daily	
7. What cleaning materials are used to clean shower facilities?	Same as other units	
8. What is the room temperature?	Previous day Front - 77° Back - 70°	had not been taken yet
9. Are cleaning materials kept secure?	<input checked="" type="radio"/> YES NO	
10. Is the CIIC memo posted?	<input checked="" type="radio"/> YES NO	
11. Are the Commissary, programs, and library schedules posted?	<input checked="" type="radio"/> YES NO	
12. Are kites available on the unit?	<input checked="" type="radio"/> YES NO	
13. Are informal complaint forms available on the unit?	<input checked="" type="radio"/> YES NO	
14. How many shakedowns are performed on each shift?	two per shift	
15. Are cell windows clear of obstruction? / Are views of beds in dorms obstructed?	YES <input checked="" type="radio"/> NO	

Inspector: Furderer

Facility: MCI
Date: 2-8-11

16. Is the atmosphere of the unit calm or disruptive?	Calm	
17. Are officers performing regular security checks?	<input checked="" type="radio"/> YES NO	
18. Are laundry facilities operational?	<input checked="" type="radio"/> YES NO	Centralized
19. Are lights turned on all night?	YES <input checked="" type="radio"/> NO	- dimmed - blue lights turned on
ADDITIONAL COMMENTS (including inmate communication):		
-inmates relayed concerns about hot water not working		

Inspector: BTF

Facility: MCI
Date: 2-8-11

AREA INSPECTED: HOUSING

HOUSING UNIT: C DORM

		COMMENTS
1. Do living areas appear clean?	<input checked="" type="radio"/> YES NO	
2. How many toilets are inoperative?		0
3. How often are toilet facilities sanitized?		at least 12 times/day in this dorm
4. Is soap available in each bathroom?	<input checked="" type="radio"/> YES NO	
5. Do shower facilities appear to be clean?	<input checked="" type="radio"/> YES NO	
6. How often are shower facilities cleaned?		same as toilets
7. What cleaning materials are used to clean shower facilities?		AP/TB/MRSA
8. What is the room temperature?		79-84
9. Are cleaning materials kept secure?	<input checked="" type="radio"/> YES NO	
10. Is the CIIC memo posted?	<input checked="" type="radio"/> YES NO	
11. Are the Commissary, programs, and library schedules posted?	<input checked="" type="radio"/> YES NO	
12. Are kites available on the unit?	<input checked="" type="radio"/> YES NO	
13. Are informal complaint forms available on the unit?	<input checked="" type="radio"/> YES NO	
14. How many shakedown are performed on each shift?		2/shift
15. Are cell windows clear of obstruction? / Are views of beds in dorms obstructed?	<input checked="" type="radio"/> YES NO	

CIIC Report: Marion Correctional Institution 72

Inspector: GTA C. Dixon

Facility: MCI
Date: 2-8-11

16. Is the atmosphere of the unit calm or disruptive?		<i>Calm</i>
17. Are officers performing regular security checks?	<input checked="" type="radio"/> YES <input type="radio"/> NO	<i>logged on computer</i>
18. Are laundry facilities operational?	<input type="radio"/> YES <input checked="" type="radio"/> NO	<i>cent laundry</i>
19. Are lights turned on all night?	<input type="radio"/> YES <input checked="" type="radio"/> NO	
ADDITIONAL COMMENTS (including inmate communication):		
<input checked="" type="checkbox"/> c/o BLOCKS on THE PHONES		

CIIC Report: Marion Correctional Institution 73

Inspector: BTG

Facility: MCI
Date: 2-8-11

AREA INSPECTED: HOUSING

HOUSING UNIT: D 89

		COMMENTS
1. Do living areas appear clean?	<input checked="" type="radio"/> YES NO	
2. How many toilets are inoperative?		Two
3. How often are toilet facilities sanitized?		3/day
4. Is soap available in each bathroom?	<input checked="" type="radio"/> YES NO	
5. Do shower facilities appear to be clean?	YES NO	
6. How often are shower facilities cleaned?		3x/day
7. What cleaning materials are used to clean shower facilities?		AP/TB/M/SN/window cleaner
8. What is the room temperature?		68-77°
9. Are cleaning materials kept secure?	<input checked="" type="radio"/> YES NO	
10. Is the CIIC memo posted?	<input checked="" type="radio"/> YES NO	
11. Are the Commissary, programs, and library schedules posted?	<input checked="" type="radio"/> YES NO	
12. Are kites available on the unit?	<input checked="" type="radio"/> YES NO	
13. Are informal complaint forms available on the unit?	<input checked="" type="radio"/> YES NO	
14. How many shakedowns are performed on each shift?		2/shift
15. Are cell windows clear of obstruction? / Are views of beds in dorms obstructed?	<input checked="" type="radio"/> YES NO	

Inspector: C. T. G.

Facility: MCI

Date: 2-8-11

D

16. Is the atmosphere of the unit calm or disruptive?		Calm
17. Are officers performing regular security checks?	<input checked="" type="radio"/> YES <input type="radio"/> NO	Noted in log
18. Are laundry facilities operational?	<input type="radio"/> YES <input checked="" type="radio"/> NO	Cant laundry
19. Are lights turned on all night?	<input type="radio"/> YES <input checked="" type="radio"/> NO	
ADDITIONAL COMMENTS (including inmate communication):		
<p>WATER IS WORKING IN SINKS</p>		

CIIC Report: Marion Correctional Institution 75

Inspector: GTC

Facility: MCT
Date: 2-8-11

AREA INSPECTED: HOUSING

HOUSING UNIT: F

		COMMENTS
1. Do living areas appear clean?	<input checked="" type="radio"/> YES <input type="radio"/> NO	
2. How many toilets are inoperative?		all working
3. How often are toilet facilities sanitized?		all working
4. Is soap available in each bathroom?	<input checked="" type="radio"/> YES <input type="radio"/> NO	
5. Do shower facilities appear to be clean?	<input checked="" type="radio"/> YES <input type="radio"/> NO	
6. How often are shower facilities cleaned?		3x day
7. What cleaning materials are used to clean shower facilities?		
8. What is the room temperature?		
9. Are cleaning materials kept secure?	<input checked="" type="radio"/> YES <input type="radio"/> NO	
10. Is the CIIC memo posted?	YES <input type="radio"/> NO	
11. Are the Commissary, programs, and library schedules posted?	<input checked="" type="radio"/> YES <input type="radio"/> NO	
12. Are kites available on the unit?	<input checked="" type="radio"/> YES <input type="radio"/> NO	
13. Are informal complaint forms available on the unit?	<input checked="" type="radio"/> YES <input type="radio"/> NO	
14. How many shakedown are performed on each shift?		2 noted in log
15. Are cell windows clear of obstruction? / Are views of beds in dorms obstructed?	<input checked="" type="radio"/> YES <input type="radio"/> NO	

Inspector: HTG - F

Facility: MCI
Date: 2-8-11

16. Is the atmosphere of the unit calm or disruptive?		
17. Are officers performing regular security checks?	<input checked="" type="radio"/> YES <input type="radio"/> NO	<i>per log in computer</i>
18. Are laundry facilities operational?	YES <input type="radio"/> NO	<i>Cent laundry</i>
19. Are lights turned on all night?	YES <input checked="" type="radio"/> NO	
ADDITIONAL COMMENTS (including inmate communication):		

Inspector: Furderer

Facility: MCI

Date: 2-8-11

AREA INSPECTED: HOUSING

HOUSING UNIT: G Block

		COMMENTS
1. Do living areas appear clean?	<input checked="" type="radio"/> YES NO	
2. How many toilets are inoperative?	none	
3. How often are toilet facilities sanitized?		inmates can clean cells at any time
4. Is soap available in each bathroom?	<input checked="" type="radio"/> YES NO	
5. Do shower facilities appear to be clean?	<input checked="" type="radio"/> YES NO	chipped paint
6. How often are shower facilities cleaned?	daily	
7. What cleaning materials are used to clean shower facilities?	same as other units	
8. What is the room temperature?	Front - 66° Back - 62°	can range from 62° to 74°
9. Are cleaning materials kept secure?	<input checked="" type="radio"/> YES NO	
10. Is the CIIC memo posted?	<input checked="" type="radio"/> YES NO	
11. Are the Commissary, programs, and library schedules posted?	<input checked="" type="radio"/> YES NO	
12. Are kites available on the unit?	<input checked="" type="radio"/> YES NO	at officer's desk
13. Are informal complaint forms available on the unit?	<input checked="" type="radio"/> YES NO	at officer's desk
14. How many shakedowns are performed on each shift?	two per shift	
15. Are cell windows clear of obstruction? / Are views of beds in dorms obstructed?	<input checked="" type="radio"/> YES NO	

Inspector: Furderer

Facility: MCI
Date: 2-8-11

AREA INSPECTED: HOUSING

HOUSING UNIT: H Block

		COMMENTS
1. Do living areas appear clean?	<input checked="" type="radio"/> YES NO	
2. How many toilets are inoperative?	none	get work orders completed quickly
3. How often are toilet facilities sanitized?		inmates can clean cells at any time
4. Is soap available in each bathroom?	<input checked="" type="radio"/> YES NO	
5. Do shower facilities appear to be clean?	<input checked="" type="radio"/> YES NO	inmate cleaning during inspection
6. How often are shower facilities cleaned?	daily	
7. What cleaning materials are used to clean shower facilities?	Same as other units	
8. What is the room temperature?	Front - 68° Back - 64°	
9. Are cleaning materials kept secure?	<input checked="" type="radio"/> YES NO	
10. Is the CIIC memo posted?	<input checked="" type="radio"/> YES NO	
11. Are the Commissary, programs, and library schedules posted?	<input checked="" type="radio"/> YES NO	
12. Are kites available on the unit?	<input checked="" type="radio"/> YES NO	
13. Are informal complaint forms available on the unit?	<input checked="" type="radio"/> YES <input checked="" type="radio"/> NO	on back order at officer's desk
14. How many shakedown are performed on each shift?	two per shift	
15. Are cell windows clear of obstruction? / Are views of beds in dorms obstructed?	<input checked="" type="radio"/> YES NO	

Inspector: Furderer

Facility: MCI
Date: 2-8-11

16. Is the atmosphere of the unit calm or disruptive?	Calm	
17. Are officers performing regular security checks?	<input checked="" type="radio"/> YES <input type="radio"/> NO	
18. Are laundry facilities operational?	<input checked="" type="radio"/> YES <input type="radio"/> NO	
19. Are lights turned on all night?	YES <input checked="" type="radio"/> NO	dimmed at night
<p>ADDITIONAL COMMENTS (including inmate communication):</p> <ul style="list-style-type: none"> -inmate Communication - small food portions - chicken all the time - institution throws food away at the end of the day - MCI camp gives remaining food out to the inmates <p>-inmate Communication</p> <ul style="list-style-type: none"> - should sell tobacco for state to make money 		

CIIC Report: Marion Correctional Institution 81

Inspector: GTC

Facility: MCI
Date: 2-8-11

AREA INSPECTED: HOUSING

HOUSING UNIT: J Block - (24)

		COMMENTS
1. Do living areas appear clean?	<input checked="" type="radio"/> YES NO	
2. How many toilets are inoperative?		none
3. How often are toilet facilities sanitized?		at least once a day - cells
4. Is soap available in each bathroom?	<input checked="" type="radio"/> YES NO	usually
5. Do shower facilities appear to be clean?	<input checked="" type="radio"/> YES NO	
6. How often are shower facilities cleaned?		2x daily
7. What cleaning materials are used to clean shower facilities?		AP Clean TB Clean NMSA
8. What is the room temperature?		usually around 65-72° has not been measured today
9. Are cleaning materials kept secure?	<input checked="" type="radio"/> YES NO	
10. Is the CIIC memo posted?	<input checked="" type="radio"/> YES NO	
11. Are the Commissary, programs, and library schedules posted?	YES NO	
12. Are kites available on the unit?	<input checked="" type="radio"/> YES NO	
13. Are informal complaint forms available on the unit?	<input checked="" type="radio"/> YES NO	not too many requests
14. How many shakedown are performed on each shift?		2 per shift - showed log
15. Are cell windows clear of obstruction? / Are views of beds in dorms obstructed?	<input checked="" type="radio"/> YES NO	

Inspector: CITG

Facility: M07
Date: 2-8-11

16. Is the atmosphere of the unit calm or disruptive?		<i>quietest time</i>
17. Are officers performing regular security checks?	<input checked="" type="radio"/> YES <input type="radio"/> NO	<i>displayed log in computer</i>
18. Are laundry facilities operational?	YES <input checked="" type="radio"/> NO	<i>central laundry room on unit</i>
19. Are lights turned on all night?	YES <input checked="" type="radio"/> NO	<i>dim range lights</i>

ADDITIONAL COMMENTS (including inmate communication):

Inspector: BTLG

Facility: MST
Date: 2-8-11

AREA INSPECTED: HOUSING

HOUSING UNIT: K Book

			COMMENTS
1. Do living areas appear clean?	<input checked="" type="radio"/> YES	NO	Very
2. How many toilets are inoperative?			none that they know of per c/o none
3. How often are toilet facilities sanitized?			
4. Is soap available in each bathroom?	<input checked="" type="radio"/> YES	NO	
5. Do shower facilities appear to be clean?	<input checked="" type="radio"/> YES	NO	
6. How often are shower facilities cleaned?			1x/shift
7. What cleaning materials are used to clean shower facilities?			AP cleaner MRSN
8. What is the room temperature?			68-70
9. Are cleaning materials kept secure?	<input checked="" type="radio"/> YES	NO	
10. Is the CIIC memo posted?	<input checked="" type="radio"/> YES	NO	
11. Are the Commissary, programs, and library schedules posted?	<input checked="" type="radio"/> YES	NO	
12. Are kites available on the unit?	<input checked="" type="radio"/> YES	NO	at c/o desk
13. Are informal complaint forms available on the unit?	<input checked="" type="radio"/> YES	NO	at c/o desk
14. How many shakedown are performed on each shift?			2 per shift
15. Are cell windows clear of obstruction? / Are views of beds in dorms obstructed?	<input checked="" type="radio"/> YES	NO	

CIIC Report: Marion Correctional Institution 84

Inspector: CTO

Facility: MOI
Date: 2-8-11

16. Is the atmosphere of the unit calm or disruptive?		active - but calm
17. Are officers performing regular security checks?	<input checked="" type="radio"/> YES NO	documented on electronic system via computer
18. Are laundry facilities operational?	YES <input checked="" type="radio"/> NO	all to complete laundry
19. Are lights turned on all night?	YES NO	central lighting on walkway - cell lights off
ADDITIONAL COMMENTS (including inmate communication):		
<p>- Springs on beds</p> <p>- TORCH PROGRAM - OLDER OFFENDERS MENTOR YOUNGER OFFENDERS</p>		

Inspector: Roborn/Micula

Facility: MCI
Date: 2-7-11

AREA INSPECTED: HOUSING

HOUSING UNIT: M Block (Incentive Block) Count 2/7/11 = 106

		COMMENTS
1. Do living areas appear clean?	<input checked="" type="radio"/> YES NO	
2. How many toilets are inoperative? <i>none</i>		54 toilets - all work
3. How often are toilet facilities sanitized? <i>daily</i>		
4. Is soap available in each bathroom?	<input checked="" type="radio"/> YES NO	
5. Do shower facilities appear to be clean?	<input checked="" type="radio"/> YES NO	
6. How often are shower facilities cleaned? <i>3-4 times/day</i>		1 on 1st shift 2 on 2nd shift 1 on 3rd shift
7. What cleaning materials are used to clean shower facilities? <i>all-purpose cleaner</i>		also, cleaners to kill MRSA is used over handles 3-4 times per day
8. What is the room temperature? <i>67-68°</i>		- temp can go to 70° sometimes - temps can be cold when seasons change
9. Are cleaning materials kept secure?	<input checked="" type="radio"/> YES NO	lock box
10. Is the CIIC memo posted?	<input checked="" type="radio"/> YES NO	in blue stationery
11. Are the Commissary programs, and library/schedules posted?	<input checked="" type="radio"/> YES NO	commissary @ desk programs - bulletin bd. library sched - bulletin bd.
12. Are kites available on the unit?	<input checked="" type="radio"/> YES NO	inmates don't have to ask, merely take what is needed
13. Are informal complaint forms available on the unit?	<input checked="" type="radio"/> YES NO	inmates don't have to ask, just take one.
14. How many shakedown are performed on each shift? <i>inmate box cell searches.</i>		1st shift = 1 2nd shift = 2
15. Are cell windows clear of obstruction? / Are views of beds in dorms obstructed? <i>yes - none</i>	<input checked="" type="radio"/> YES NO	windows are clear - all doors have windows - unobscured view Some obstruction of view of clear. are bunkers in front of dorms.

Inspector: Robin Quisenberry

Facility: MCI
Date: 2-7-11

<p>16. Is the atmosphere of the unit <u>calm</u> or disruptive?</p>	<p><u>Unit inmates very engaged in programs; programs as requirement to live on the unit. *</u></p>		
<p>17. Are officers performing regular security checks? <u>once each shift</u></p>	<p><u>YES</u> NO</p>	<p><u>They check doors, windows, chain on fences, fire extinguisher</u></p>	<p>Chair</p>
<p>18. Are laundry facilities operational?</p>	<p>YES NO</p>	<p><u>NA - go to laundry room block (none on unit)</u></p>	<p>not in</p>
<p>19. Are lights turned on all night? <u>lights on 2nd shift</u></p>	<p><u>YES</u> <u>NO</u></p>	<p><u>no lights on 3rd shift</u></p>	
<p>ADDITIONAL COMMENTS (including inmate communication):</p>			
<p>*If an inmate has a behavior issue and if inmate were to be removed from unit for behavior, they do not return for about a year, even after their 'wait list' wait.</p> <p>2 large fans @ each end of block to keep air flowing</p> <p>Separate cells converted into "rooms" for other uses:</p> <ul style="list-style-type: none"> • Community Service Room - to do projects • Cardie Room - • Art Room - Inmate Hightower's art room for painting ↳ also used by 2 other inmates • Sewing Room - former cell • Hair Room - former cell • mini-dayroom - has books on shelves, 3 small tables, PC <p>The Block was formerly the PC</p> <p>Dayroom: coffee (hot water) pot iron ice machine + ice cooler 8 Tables + seats (chairs & benches - combination) 3 phones in the block</p> <p>Removed the rec cage then they converted it from PC to regular housing unit</p> <p>Outside Rec. yard (square & surrounded by fence) - only unit of own outside recreation yard: 3 benches, 3 tables, pull up bar, one table under a shelter shelter "roof."</p> <p>Common area has recycling bins.</p>			

Inspector: BTC

Facility: MC
Date: 2-7-11

AREA INSPECTED: HOUSING

HOUSING UNIT: A-Block (2nd count)
LONG TERM OFFENDER HOUSING

		COMMENTS
1. Do living areas appear clean?	<input checked="" type="radio"/> YES NO	SINGLE CELLS
2. How many toilets are inoperative?		NO
3. How often are toilet facilities sanitized?		DAILY
4. Is soap available in each bathroom?	<input checked="" type="radio"/> YES NO	
5. Do shower facilities appear to be clean?	<input checked="" type="radio"/> YES NO	
6. How often are shower facilities cleaned?		DAILY
7. What cleaning materials are used to clean shower facilities?		MURPHY MCPURPOSE GLASS CLEANER
8. What is the room temperature?		68-70 deg Day 1st - 2nd shift
9. Are cleaning materials kept secure?	<input checked="" type="radio"/> YES NO	
10. Is the CIIC memo posted?	YES NO	
11. Are the Commissary, programs, and library schedules posted?	YES NO	
12. Are kites available on the unit?	<input checked="" type="radio"/> YES NO	AT CP DESK
13. Are informal complaint forms available on the unit?	<input checked="" type="radio"/> YES NO	AT CP DESK - Inmate don't complain much
14. How many shakedown are performed on each shift?		- One per shift due to limited number of ID-days - two second shift
15. Are cell windows clear of obstruction? / Are views of beds in dorms obstructed?	YES NO	

CIIC Report: Marion Correctional Institution 88

Inspector: R. Busch

Facility: 1102

Date: 2-7-11

16. Is the atmosphere of the unit calm or disruptive?		<i>Calm</i>
17. Are officers performing regular security checks?	<input checked="" type="radio"/> YES NO	
18. Are laundry facilities operational?	YES NO	<i>Central laundry</i>
19. Are lights turned on all night?	YES <input checked="" type="radio"/> NO	
ADDITIONAL COMMENTS (including inmate communication):		

Inspector: Robbin Saucel

Facility: MC1 Camp
Date: 2-7-11

AREA INSPECTED: HOUSING

HOUSING UNIT: Camp dorm

		COMMENTS
1. Do living areas appear clean?	<input checked="" type="radio"/> YES <input type="radio"/> NO	
2. How many toilets are inoperative?		all OK
3. How often are toilet facilities sanitized?		1 per week
4. Is soap available in each bathroom?	<input checked="" type="radio"/> YES <input type="radio"/> NO	
5. Do shower facilities appear to be clean?	<input checked="" type="radio"/> YES <input type="radio"/> NO	
6. How often are shower facilities cleaned?		daily
7. What cleaning materials are used to clean shower facilities?		spend all purpose cleaner
8. What is the room temperature? <i>very bright & bright - due to new windows</i>		comfortable to warm - installed 2-3 yrs ago
9. Are cleaning materials kept secure?	<input checked="" type="radio"/> YES <input type="radio"/> NO	
10. Is the CIIC memo posted?	YES <input checked="" type="radio"/> NO	
11. Are the Commissary, programs, and library schedules posted?	<input checked="" type="radio"/> YES <input type="radio"/> NO	(in downstairs) dayroom
12. Are kites available on the unit?	<input checked="" type="radio"/> YES <input type="radio"/> NO	
13. Are informal complaint forms available on the unit?	<input checked="" type="radio"/> YES <input type="radio"/> NO	
14. How many shakedown are performed on each shift?		2 - 1st shift 2 - 2nd shift 3 in common areas
15. Are cell windows clear of obstruction? / Are views of beds in dorms obstructed?	<input checked="" type="radio"/> YES <input checked="" type="radio"/> NO	double beds @ far end are <u>NO</u> visible to COS

great view of single bunk no closed to CO platform.
CO Solution suggested: Install a large mirror in the center of the dorm to reveal obscure places in the dorm.

Inspector: Rebison / Saul

Facility: MCI Camp
Date: 2-7-11

16. Is the atmosphere of the unit <u>(Calm)</u> or disruptive?		
17. Are officers performing regular security checks?	YES NO	<i>continuous process in the dorm</i>
18. Are laundry facilities operational?	<u>YES</u> NO	
19. Are lights turned on all night?	YES <u>NO</u>	
ADDITIONAL COMMENTS (including inmate communication):		
<p><i>9 phones total (4 in booths for privacy)</i></p> <p><i>Commissary limit now \$100 each inmate, each trip x 3 per month. = \$300 monthly limit</i></p> <p><i>A new laundry-related service started a year ago - clothing maintenance & repair to prevent bigger future repairs.</i></p> <p><i>Inmates sign up for repairs on a schedule - Repairs are made</i></p> <p><i>Sergeant in the camp relayed good teamwork among staff gets work done. Two staff traits that dominate are good <u>communications</u> and <u>respect</u>.</i></p>		

Inspector: J. Saul

Facility: MCI
Date: 2/7/11

AREA INSPECTED: HOUSING

HOUSING UNIT: East Camp

		COMMENTS
1. Do living areas appear clean?	YES NO	
2. How many toilets are inoperative?	0	
3. How often are toilet facilities sanitized?	weekly	
4. Is soap available in each bathroom?	<input checked="" type="radio"/> YES NO	
5. Do shower facilities appear to be clean?	<input checked="" type="radio"/> YES NO	
6. How often are shower facilities cleaned?	weekly	
7. What cleaning materials are used to clean shower facilities?	unknown	
8. What is the room temperature?	70°	IM takes temp
9. Are cleaning materials kept secure?	<input checked="" type="radio"/> YES NO	chemical box
10. Is the CIIC memo posted?	YES <input checked="" type="radio"/> NO	
11. Are the Commissary, programs, and library schedules posted?	YES NO	
12. Are kites available on the unit?	<input checked="" type="radio"/> YES NO	
13. Are informal complaint forms available on the unit?	<input checked="" type="radio"/> YES NO	
14. How many shakedowns are performed on each shift?	2	strip searches on all guys who work outside fence
15. Are cell windows clear of obstruction? / Are views of beds in dorms obstructed?	<input checked="" type="radio"/> YES NO	

Inspector: J. Saul

Facility: MCI
Date: 2/7

16. Is the atmosphere of the unit calm or disruptive?	calm	
17. Are officers performing regular security checks?	<input checked="" type="radio"/> YES NO	not performed this morning
18. Are laundry facilities operational?	<input checked="" type="radio"/> YES NO	
19. Are lights turned on all night?	YES <input checked="" type="radio"/> NO	All lights shut down except safety lights

ADDITIONAL COMMENTS (including inmate communication):

bleach solution used to clean weekly
dust comes out of vents
↳ IM reported
↳ UM: work order filled out, but never done
↳ UM: will complete ~ should take 2 wks
↳ IM will write if not done in 2 wks

Inspector: Furderer

Facility: MCI
Date: 2-7-11

AREA INSPECTED: SEGREGATION

		COMMENTS
1. Do cells appear clean?	<input checked="" type="radio"/> YES <input type="radio"/> NO	
2. How many toilets are inoperative?	none	
3. How often are toilet facilities sanitized?	daily	
4. Do shower facilities appear to be clean?	YES <input checked="" type="radio"/> NO	- chipped paint - rust
5. How often are shower facilities cleaned?	daily	
6. What is the room temperature?	73° Cool in unit	Warm inside cells
7. Are officers conducting security checks every 30 minutes?	<input checked="" type="radio"/> YES <input type="radio"/> NO	
8. Are individual log sheets maintained and up to date? • Meals • Recreation in/out • Linen/towel exchange • Razor issue • Cell cleaning	<input checked="" type="radio"/> YES <input type="radio"/> NO	
9. How often are medical rounds conducted?	once per shift	
10. How often are mental health rounds conducted?	once per day	
11. Are kites available on the unit?	<input checked="" type="radio"/> YES <input type="radio"/> NO	officer's desk
12. Are informal complaint forms available on the unit?	<input checked="" type="radio"/> YES <input type="radio"/> NO	officer's desk
13. Do inmates have access to library and legal services?	<input checked="" type="radio"/> YES <input type="radio"/> NO	- via kite - have ARs and policies on the unit
14. Are cell windows clear of obstruction?	<input checked="" type="radio"/> YES <input type="radio"/> NO	

Inspector: Furderer

Facility: MCI
Date: 2-7-11

15. Is the atmosphere of the unit calm or disruptive?	Calm	
16. Are inmates provided with the required cell furnishings, clothing, toilet paper, soap, etc?	<input checked="" type="radio"/> YES NO	
17. Do religious services personnel have access to inmates in segregation?	<input checked="" type="radio"/> YES NO	make rounds weekly
<p>ADDITIONAL COMMENTS (including inmate communication and breakdown of inmates):</p> <ul style="list-style-type: none"> - inmate porter seemed proud of work - two crisis cells - strings/ropes hanging in some cells - inmate communication <ul style="list-style-type: none"> - grievances never answered - inmate communication <ul style="list-style-type: none"> - never had a ticket until got here - do not have a ticket - been in seg since last month - have not heard from anyone except IIS - inmate communication <ul style="list-style-type: none"> - there are a lot of mice in seg - inmate communication <ul style="list-style-type: none"> - wardens don't make rounds in seg and don't respond to kites 		

CIIC Report: Marion Correctional Institution 95

Inspector: Furderer

Facility: MCI
Date: 2-8-11

AREA INSPECTED: RECREATION

		COMMENTS
1. Are programs available to all inmates?	<input checked="" type="radio"/> YES NO	
2. How many staff are assigned to supervise inmates?	four	
3. Are programs posted for inmate information?	<input checked="" type="radio"/> YES NO	
4. Is equipment cleaned and sanitized on a regular basis?	<input checked="" type="radio"/> YES NO	
5. Are cleaning materials kept secure?	<input checked="" type="radio"/> YES NO	
6. Does recreation equipment appear to be in good working order?	<input checked="" type="radio"/> YES NO	
7. How many inmate workers are assigned to the recreation department?	TO-68	- porters - rec. workers - Program Aides
8. Are inmate workers trained and is this documented?	<input checked="" type="radio"/> YES NO	
9. Is a kite log maintained?	YES <input checked="" type="radio"/> NO	- Keep copies of all Kites related to program ideas and for ACA
10. Are programs available for inmates with disabilities?	<input checked="" type="radio"/> YES NO	- m wf ADA and 504
ADDITIONAL COMMENTS (including description of recreational areas):		
<ul style="list-style-type: none"> - open movement - 30 in cage at one time <li style="padding-left: 20px;">- only three times per week for one hour at a time - wood Craft area - Art room - Music room - inmates very active 		

Inspector: Robison / Sant

Facility: MCI
Date: 2-7-11

PROGRAM NAME: (Intensive Outpatient Program) 10P Recovery Services - Group

		COMMENTS
1. Are programs available to all inmates?	<input checked="" type="radio"/> YES NO	
2. How many students are in the observed class?		10
3. What is the student/teacher ratio?		10:2
4. Are instructional materials provided to every student?	<input checked="" type="radio"/> YES NO	
5. Are instructional materials copyrighted or teacher-made?		The Change Company
6. Do students have use of technology as part of the observed program?	<input checked="" type="radio"/> YES NO	NA [Yes - Educ. program PC available]
7. Was the teacher using technology during the observed program?	YES <input checked="" type="radio"/> NO	
8. Was the technology functioning correctly?	YES NO	NA
9. Was the classroom appropriate in size, safety, acoustics, and lighting?	<input checked="" type="radio"/> YES NO	very warm
10. Is security staff on duty during programming?	YES <input checked="" type="radio"/> NO	NOT needed
11. Is the teacher using a lecture style of instruction, question/answer, or group discussion?		dialogue / Q+A / open-ended questions
12. Do students appear to be responsive and engaged in the lesson?	<input checked="" type="radio"/> YES NO	Students very engaged in dialogue

ADDITIONAL COMMENTS:

12 week prog.
6 wks into it
IM - prog encourages inmate taking responsibility for participation
3 peer leaders - work through a program to facilitate skills (12 wks of training)
CBT-based program.

Strategies that inmate experience:

- some lectures
- podium exercises
- small groups
- large groups

Other strategies:

Inspector: _____

Facility: _____

Date: _____

AREA INSPECTED: OPI

		COMMENTS
1. What OPI shops are located at this facility?		Dumpster refurbishing - construct metal shop - SEE COMMENTS
2. How many inmates work in OPI at this institution?		99 (1)
3. How many staff members supervise the inmates during the hours of operation?		FIVE 3 PWS 2 MINS
4. Are there any certifications available for this shop?	YES <input checked="" type="radio"/> NO	NOT DIRECTLY BUT THROUGH AFFILIATED VOC PERMS TOW-MOTOR LICENSE
5. What is the average hourly/monthly wage?		PAY LEVELS 1-5 (1 IS HIGHEST) 1 4.47 4.27 2 4.42 5.21 3 3.85
6. Are there any maintenance issues with the equipment?	YES <input checked="" type="radio"/> NO	Maintenance repairs/maintaining equipment as necessary
7. How often is equipment checked per safety standards?		PERFORMED DAILY BEFORE AND MONTHLY
8. Are inmates searched before and after their shifts?	YES <input checked="" type="radio"/> NO	THOROUGH SEARCH VIA METAL DETECTOR
9. Have you had any inventory issues?	YES <input checked="" type="radio"/> NO	SITE-LINE SYSTEM MANAGES APPROPRIATE AMOUNT OF INVENTORY ACCORD TO COMPLETE JOBS - SOME
10. Do you feel production could be increased/decreased/or remain the same?		
11. How could your shop be more efficient/profitable?		USE INMATE CAPABILITY MORE TO PERFORM WIDER RANGE OF DUTIES AND GOODS
12. How could OPI be more efficient/profitable?		USE MAJOR STATE AGENCIES TO MAKE GOODS FOR THEM
ADDITIONAL COMMENTS (including description of OPI area): - MAKE BUNKS, LOCKERS, KITCHEN STANDS, CHAIRS - INMATES APPEAR PRODUCTIVE, MAINLY ABOUT PERFORMING ASSIGNED DUTIES - SOME SCAN BARRIERS TO TRACK WAGES/HOURS/INCENTIVE/PRESENT ON SITE - WORK 4 HOURS/DAY 4.5 HRS (1) DESIGNING NEW BUNK FOR (2) WILL SAVE 4 25/bed (2) REPAIR ALL HAND TOOLS AND LAUNCH MACHINES		

COMPUTER
327/mo
15 mo. 08
30 mo. 08
45 mo. 10

DECKS

Inspector: Robison / Saul

Facility: MCI
Date: 2-7-11

AREA INSPECTED: LIBRARY/LAW LIBRARY

		COMMENTS
1. Does the area appear to be clean and well-maintained?	<input checked="" type="radio"/> YES NO	
2. Are DRC Administrative Rules (5120-9 series) available to inmates upon request?	<input checked="" type="radio"/> YES NO	appeared out of date
3. How many computers/typewriters are available for inmates' use?	8 total	4 Westlaw 4 for word processing
4. How often are computers/typewriters cleaned?	daily	using ^{an} moisture including a sanitizer
5. Are library services available daily, including weekends and evenings?	<input checked="" type="radio"/> YES NO	
6. Does the library participate in inter-library loan programs?	<input checked="" type="radio"/> YES NO	currently - on a temporary basis. Due to outstanding items & fines to be paid by MCI & MCI.
7. How many inmate workers are assigned to the library/law library?	20 inmates lib. aides	
8. Are inmates housed in special management areas permitted to use the law library? How?	<input checked="" type="radio"/> YES NO	IM must request law materials, which are photocopied, cash slips created & write loans. no fines charged to IM acct if request over time.
9. Is a kite log maintained?	<input checked="" type="radio"/> YES NO	
10. Are there separate sections for African-American/Hispanic/ethnic literature?	<input checked="" type="radio"/> YES <input checked="" type="radio"/> NO	other books are integrated into stacks. 3 shelves African American & 1 shelf Spanish
11. Are forms on hand to allow inmates to file court actions?	<input checked="" type="radio"/> YES NO	in law library
12. How often are new materials added to the library?	annually	approx. \$1,500; plus. donated books are continuously accepted.
ADDITIONAL COMMENTS (including library/law library schedule): • Reported by head RC library administrator gets books from Half Price Books. • Yes - CIIC memo was posted. • Each inmate has daily opportunity to go to library (one per day) • Inmates may also kite to request additional time in library.		

(by inmates in areas)

if request over time.

other books are integrated into stacks.

accepted.

SECTION IX. GLOSSARY OF TERMS

A

- Administrative Assistant (AA) – Staff member who is an assistant to the Warden and typically responsible for reviewing RIB (Rules Infraction Board) decisions and RIB appeals.
- Adult Basic Education (ABE)/Literacy – Literacy classes are for student with reading levels at 226 and below the CASAS. The ABE/Literacy Unit consist of two afternoon sessions. Students attend school approximately 1 ½ hours each day on Monday – Thursday. Students work individually or in small groups with tutors and focus on improving their reading and math skills. All tutors in the ABE/Literacy Unit are certified through a 10 hour training course.

B

- Brunch – Served on weekends as a cost savings initiative.
- Bureau of Classification – Office located at DRC Central Office responsible with the ultimate authority for inmate security levels, placement at institutions, as well as transfers.
- Bureau of Medical Services – Office located at DRC Central Office responsible for direct oversight of medical services at each institution.
- Bureau of Mental Health Services – Office located at DRC Central Office responsible for direct oversight of Mental Health Services at each institution.

C

- Case Manager – Staff member responsible for assisting inmates assigned to their case load and conducting designated core and authorized reentry programs.
- Cellie/Bunkie – An inmate’s cellmate or roommate.
- Chief Inspector – Staff member at DRC Central Office responsible for administering all aspects of the grievance procedure for inmates, rendering dispositions on inmate grievance appeals as well as grievances against the Wardens and/or Inspectors of Institutional Services.
- Classification/Security Level – System by which inmates are classified based on the following: current age; seriousness of the crime; prior offenses; most recent violence (not including the current offense); gang activity before going to prison; and present and past escape attempts.
- Close Security – See Level 3
- Computer Voice Stress Analysis (CVSA) – A device, which electronically detects, measures, and charts the stress in a person’s voice following a pre-formatted questionnaire. Used as a truth seeking device for investigations.
- Conduct Report/Ticket – Document issued to inmate for violating a rule.
- Contraband – items possessed by an inmate which, by their nature, use, or intended use, pose a threat to security or safety of inmates, staff or public, or disrupt the orderly operation of the facility. items possessed by an inmate without permission and the location in which these items are discovered is improper; or the quantities in which an allowable item is possessed is prohibited; or the manner or method by which the item is obtained was improper; or an allowable item is possessed by an inmate in an altered form or condition.

D

- Deputy Warden of Operations (DWO) – Staff member at each institution in charge of monitoring the Major, custody staff, the Unit Management Administrator, Unit Managers, Case Managers, and the locksmith. Other areas include count office, mail/visiting, Rules Infraction Board, segregation unit, and recreation. The Deputy Warden of Operations is also responsible for reviewing use of force reports and referring them to a Use of Force Committee when necessary for further investigation.
- Deputy Warden of Special Services (DWSS) – Staff member at each institution in charge of monitoring education, the library, inmate health services, recovery services, mental health services, religious services, Ohio Penal Industries, and food service.
- Disciplinary Control (DC) – The status of an inmate who was found guilty by the Rules Infraction Board and his or her penalty is to serve DC time. An inmate may serve up to 15 days in DC.

F

- Food Service Administrator – An employee within the Office of Administration Services educated in food service management and preparation, to manage DRC food service departments.

G

- GED/PRE-GED – Pre-GED classes are for those who have a reading score between a 227 through 239 on level C or higher of the CASAS test. GED classes are for those who have a reading score of 240 on level C or higher on the CASAS test. Students attend class 1 ½ hours each day, Monday – Thursday. Students study the five subjects measured by the GED. In addition to class work, students are given a homework assignment consisting of a list of vocabulary words to define and writing prompt each week. All GED and Pre-GED tutors are certified through a 10-hour training course.
- General Population (GP) – Inmates not assigned to a specialized housing unit.

H

- Health Care Administrator (HCA) – The health care authority responsible for the administration of medical services within the institution. This registered nurse assesses, directs, plans, coordinates, supervises, and evaluates all medical services delivered at the institutional level. The HCA interfaces with health service providers in the community and state to provide continuity of care.
- Hearing Officer – The person(s) designated by the Managing Officer to conduct an informal hearing with an inmate who received a conduct report.
- Hooch – An alcoholic beverage.

I

- Industrial and Entertainment (I and E) Funds – Funds created and maintained for the entertainment and welfare of the inmates.
- Informal Complaint Resolution (ICR) – The first step of the Inmate Grievance Procedure (IGP). Inmates submit ICRs to the supervisor of the staff member who is the cause of the complaint. Staff members are to respond within seven calendar days. Timeframe may be waived for good cause.

- Inmate Grievance Procedure (IGP) – A three step process whereby inmates may document and report concerns, problems, or issues.
- Inspector of Institutional Services (IIS) – Staff person at the institution in charge of facilitating the inmate grievance procedure, investigating and responding to inmate grievances, conducting regular inspections of institutional services, serving as a liaison between the inmate population and institutional personnel, reviewing and providing input on new or revised institutional policies, procedures and post orders, providing training on the inmate grievance procedure and other relevant topics, and any other duties as assigned by the Warden or Chief Inspector that does not conflict with facilitating the inmate grievance procedure or responding to grievances.
- Institutional Separation – An order wherein two or more inmates are not assigned to general population in the same institution due to a concern for the safety and security of the institution, staff, and/or other inmates.
- Intensive Program Prison (IPP) – Refers to several ninety-day programs, for which certain inmates are eligible, that are characterized by concentrated and rigorous specialized treatment services. An inmate who successfully completes an IPP will have his/her sentence reduced to the amount of time already served and will be released on post-release supervision for an appropriate time period.
- Interstate Compact – The agreement codified in ORC 5149.21 governing the transfer and supervision of adult offenders under the administration of the National Interstate Commission.

K

- Kite – A written form of communication from an inmate to staff.

L

- Local Control (LC) – The status of an inmate who was referred to the Local Control Committee by the Rules Infraction Board. The committee will decide if the inmate has demonstrated a chronic inability to adjust to the general population or if the inmate's presence in the general population is likely to seriously disrupt the orderly operation of the institution. A committee reviews the inmate's status every 30 days for release consideration. The inmate may serve up to 180 days in LC.
- Local Separation – An order wherein two or more inmates are not permitted to be assigned to the same living and/or work area, and are not permitted simultaneous involvement in the same recreational or leisure time activities to ensure they are not in close proximity with one another.

N

- Notification of Grievance (NOG) – The second step of the Inmate Grievance Procedure (IGP). The NOG is filed to the Inspector of Institutional Services and must be responded to within 14 calendar days. Timeframe may be waived for good cause.

M

- Maximum Security – See Level 4
- Medium Security – See Level 2

- Mental Health Caseload – Consists of offenders with a mental health diagnosis who receive treatment by mental health staff and are classified as C-1 (SMI) or C-2 (Non-SMI).
- Minimum Security – See Level 1

O

- Ohio Central School System (OCSS) – The school district chartered by the Ohio Department of Education to provide educational programming to inmates incarcerated within the Ohio Department of Rehabilitation and Correction.
- Ohio Penal Industries (OPI) – A subordinate department of the Department of Rehabilitation and Correction. OPI manufactures goods and services for ODRC and other state agencies.

P

- Parent Institution – The institution where an inmate is assigned to after reception and will be the main institution where the inmate serves his or her time. The parent institution is subject to change due to transfers.
- Protective Control (PC) – A placement for inmates whose personal safety would be at risk in the General Population (GP).

R

- Reentry Accountability Plan (RAP) – Plan for inmates, which includes the static risk assessment, dynamic needs assessment, and program recommendations and participation.
- Residential Treatment Unit (RTU) – The Residential Treatment Unit is a secure, treatment environment that has a structured clinical program. All offenders enter at the Crisis and Assessment Level (Level 1). This level is designed to assess conditions and provide structure for the purpose of gaining clinical information or containing a crisis. The disposition of the assessment can be admission to the treatment levels of the RTU, referral to OCF, or referral back to the parent institution.
- Rules Infraction Board (RIB) – A panel of two staff members who determine guilt or innocence when an inmate receives a conduct report or ticket for disciplinary reasons.

S

- Security Control (SC) – The status of an inmate who is pending a hearing by the Rules Infraction Board for a rule violation, under investigation or pending institutional transfer and needs to be separated from the general population. Inmates may be placed in SC for up to seven days. The seven day period can be extended if additional time is needed.
- Security Level/Classification – System by which inmates are classified based on the following: current age; seriousness of the crime; prior offenses; most recent violence (not including the current offense); gang activity before going to prison; and present and past escape attempts.
 - Level 1A Security (Minimum) – The lowest security level in the classification system. Inmates classed as Level 1 have the most privileges allowed. Inmates in Level 1 who meet criteria specified in DRC Policy 53-CLS-03, Community Release Approval Process, may be eligible to work off the grounds of a correctional institution. Level 1A inmates may be housed at a correctional camp with or without a perimeter fence and may work outside the fence under periodic supervision. Level 1A replaces the classification previously known as “Minimum 1 Security.”

- Level 1B Security (Minimum) – The second lowest level in the classification system. Level 1B inmates may be housed at a correctional camp with a perimeter fence and may work outside of the fence under intermittent supervision. However, Level 1B inmates who are sex offenders are not permitted to work or house outside of a perimeter fence. Level 1B inmates may not work off the grounds of the correctional institution. Level 1B replaces the classification previously known as “Minimum 2 Security.”
- Level 2 Security (Medium) – A security level for inmates who are deemed in need of more supervision than Level 1 inmates, but less than Level 3 inmates. Level 2 replaces the classification previously known as “Medium Security.”
- Level 3 Security (Close) – This is the security level that is the next degree higher than Level 2, and requires more security/supervision than Level 2, but less than Level 4. Level 3 replaces the classification previously known as “Close Security.”
- Level 4 Security (Maximum) – This is the security level that is the next degree higher than Level 3, and requires more security/supervision than Level 3, but less than Level 5. It is the security level for inmates whose security classification score at the time of placement indicates a need for very high security. It is also a classification for those who are involved in, but not leading others to commit violent, disruptive, predatory or riotous actions, and/or a threat to the security of the. Level 4 replaces the classification previously known as “Maximum Security.”
- Level 4A Security (Maximum) – A less restrictive privilege level, which inmates may be placed into by the privilege level review committee with the Warden/Designee’s approval, after a review of the inmate’s status in level 4.
- Level 4B Security (Maximum) – The most restrictive privilege level assigned to an inmate classified into level 4.
- Level 5 Security (Supermax) – A security level for inmates who commit or lead others to commit violent, disruptive, predatory, riotous actions, or who otherwise pose a serious threat to the security of the institution as set forth in the established Level 5 criteria. Level 5 replaces the classification previously known as “High Maximum Security.”
- Level 5A Security (Supermax) – A less restrictive privilege level, which inmates may be placed into by the privilege level review committee with the Warden/Designee’s approval, after a review of the inmate’s status in level 5.
- Level 5B Security (Supermax) – The most restrictive privilege level assigned to an inmate classified into level 5.
- Security Threat Group (STG) – Groups of inmates such as gangs that pose a threat to the security of the institution.
- Separation – See Institutional Separation and Local Separation
- Seriously Mentally Ill (SMI) – Inmates who require extensive mental health treatment.
- Shank – Sharp object manufactured to be used as a weapon.
- Special Management Housing Unit (SMHU)/Segregation – Housing unit for those assigned to Security Control, Disciplinary Control, Protective Control, and Local Control.
- Supermax Security – See Level 5

T

- Telemedicine – A two-way interactive videoconferencing system that allows for visual and limited physical examination of an inmate by a physician specialist while the inmate remains at his/her prison setting and the physician specialist remains at the health care facility. It also includes educational and administrative uses of this technology in the support of health care, such as distance learning, nutrition counseling and administrative videoconferencing.
- Transitional Control – Inmates approved for release up to 180 days prior to the expiration of their prison sentence or release on parole or post release control supervision under closely monitored supervision and confinement in the community, such as a stay in a licensed halfway house or restriction to an approved residence on electronic monitoring in accordance with section 2967.26 of the Ohio Revised Code.
- Transitional Education Program (TEP) – Learn skills to successfully re-enter society. Release dated within 90-180 days.

U

- Unit Management Administrator (UMA) – Staff member responsible for overseeing the roles, responsibilities and processes of unit management staff in a decentralized or centralized social services management format. The UMA may develop centralized processes within unit management, while maintaining the unit based caseload management system for managing offender needs. The UMA shall ensure that at least one unit staff member visits the special management areas at least once per week and visits will not exceed seven days in between visits.
- Unit Manager (UM) – Staff member responsible for providing direct supervision to assigned unit management staff and serving as the chairperson of designated committees. Unit Managers will conduct rounds of all housing areas occupied by inmates under their supervision.

W

- Warden – Top administrator at each correctional institution.

Ohio Department of Rehabilitation and Correction Institution Acronyms

Allen Correctional Institution	ACI
Belmont Correctional Institution	BeCI
Chillicothe Correctional Institution	CCI
Correctional Reception Center	CRC
Corrections Medical Center	CMC
Dayton Correctional Institution	DCI
Franklin Pre-Release Center	FPRC
Grafton Correctional Institution	GCI
Hocking Correctional Facility	HCF
Lake Erie Correctional Institution	LaeCI
Lebanon Correctional Institution	LeCI
London Correctional Institution	LoCI
Lorain Correctional Institution	LorCI
Madison Correctional Institution	MaCI

Mansfield Correctional Institution.....	ManCI
Marion Correctional Institution	MCI
Noble Correctional Institution	NCI
North Central Correctional Institution.....	NCCI
North Coast Correctional Treatment Facility	NCCTF
Northeast Pre-Release Center	NEPRC
Oakwood Correctional Facility.....	OCF
Ohio Reformatory for Women.....	ORW
Ohio State Penitentiary	OSP
Pickaway Correctional Institution	PCI
Richland Correctional Institution	RiCI
Ross Correctional Institution	RCI
Southeastern Correctional Institution	SCI
Southern Ohio Correctional Facility.....	SOCF
Toledo Correctional Institution.....	ToCI
Trumbull Correctional Institution.....	TCI
Warren Correctional Institution.....	WCI