



Lorain Correctional Institution

April 18, 2011

**Darin Furderer,
Report Coordinator**

TABLE OF CONTENTS

| | PAGE |
|--|-------------|
| SECTION I. <u>INSPECTION PROFILE AND INSTITUTION OVERVIEW</u> | 4 |
| A. <u>INSPECTION PROFILE</u> | 4 |
| B. <u>INSTITUTION OVERVIEW</u> | 5 |
| C. <u>COST SAVINGS INITIATIVES</u> | 5 |
| D. <u>INMATE POPULATION</u> | 5 |
| 1. <u>Security Threat Groups</u> | 6 |
| E. <u>STAFF DEMOGRAPHICS</u> | 6 |
| 1. <u>Staff Focus Group</u> | 8 |
| SECTION II. <u>CRITICAL CONCERNS AND POINTS OF PRIDE</u> | 9 |
| SECTION III. <u>CIIC STATUTORY REQUIREMENTS</u> | 15 |
| A. <u>ATTEND A GENERAL MEAL PERIOD</u> | 15 |
| B. <u>ATTEND AN EDUCATIONAL OR REHABILITATIVE PROGRAM</u> | 15 |
| C. <u>EVALUATE THE INMATE GRIEVANCE PROCEDURE</u> | 15 |
| SECTION IV. <u>KEY STATISTICS</u> | 17 |
| A. <u>USE OF FORCE</u> | 17 |
| B. <u>ASSAULTS</u> | 17 |
| C. <u>SUICIDES AND SUICIDE ATTEMPTS</u> | 18 |
| D. <u>INVESTIGATOR DATA</u> | 19 |
| SECTION V. <u>OPERATIONS</u> | 20 |
| A. <u>MEDICAL SERVICES</u> | 20 |
| B. <u>MENTAL HEALTH SERVICES</u> | 21 |
| C. <u>FOOD SERVICES</u> | 21 |
| D. <u>HOUSING UNITS</u> | 22 |
| E. <u>COMMISSARY</u> | 22 |
| F. <u>RECREATION</u> | 23 |
| SECTION VI. <u>PROGRAMS</u> | 24 |
| A. <u>EDUCATIONAL/VOCATIONAL PROGRAMMING</u> | 24 |
| B. <u>REENTRY/UNIT PROGRAMS</u> | 24 |
| C. <u>RECOVERY SERVICES</u> | 25 |
| D. <u>RELIGIOUS PROGRAMS</u> | 25 |
| E. <u>LIBRARY SERVICES</u> | 25 |
| SECTION VII. <u>CIIC CONTACTS AND CONCERNS</u> | 27 |
| A. <u>INQUIRIES</u> | 29 |

TABLE OF CONTENTS

| | PAGE |
|--|-------------|
| SECTION VIII. <u>APPENDIX</u> | 30 |
| A. <u>DATA TABLES</u> | 30 |
| Table 1. DRC Population and Prison Rated Capacity | 30 |
| Table 2. Staff Population Breakdown | 31 |
| Table 3. Inspector’s Report | 31 |
| Table 4. Use of Force with Racial Breakdown | 33 |
| Table 5. Use of Force with Racial and Monthly Breakdown | 33 |
| Table 6. Assaults: Inmate on Inmate | 34 |
| Table 7. Assaults: Inmate on Staff | 34 |
| Table 8. Suicide Attempts | 35 |
| Table 9. Investigator Monthly Report Summary by Type of Investigation ... | 36 |
| Table 10. Medical Services | 36 |
| Table 11. Mental Health Caseload by Institution | 40 |
| Table 12. Seriously Mentally Ill by Institution | 41 |
| Table 13. Monthly Academic Enrollment and Academic Waitlist | 42 |
| Table 14. GEDs Passed and Inmates on Academic Waitlist | 43 |
| Table 15. Inmate Enrollment in Educational Programs | 44 |
| Table 16. CIIC Contacts with Institutional Breakdown (DRC) | 46 |
| Table 17. CIIC Concerns with Institutional Breakdown (DRC) | 47 |
| Table 18. Top Ten Reported Concerns to CIIC (Lorain CI) | 48 |
| Table 19. Breakdown of Top Three Reported Concerns (Lorain CI) | 48 |
| B. <u>INSPECTION CHECKLISTS</u> | 49 |
| SECTION IX. <u>GLOSSARY OF TERMS</u> | 90 |

**CORRECTIONAL INSTITUTION INSPECTION COMMITTEE REPORT
ON THE INSPECTION AND EVALUATION OF
LORAIN CORRECTIONAL INSTITUTION**

SECTION I. INSPECTION PROFILE AND INSTITUTIONAL OVERVIEW

A. INSPECTION PROFILE

| | |
|---|--|
| Date of Inspection: | April 18, 2011 |
| Type of Inspection: | Unannounced |
| Legislators and CIIC Staff Present: | Senator Gayle Manning Representative W. Carlton Weddington Joanna Saul, Director Darin Furderer, Inspector Gregory Geisler, Inspector Jamie Hooks, Inspector Adam Jackson, Inspector Carol Robison, Inspector |
| Facility Staff Present: | Jerry Spatny, Deputy Warden of Custody CIIC spoke with many additional staff at their posts throughout the course of the inspection. |
| Areas/Activities Included in the Inspection: | |
| Housing Units | Recreation |
| Segregation | Commissary |
| Kitchen | Quartermaster |
| Inmate Dining Hall | Law Library |
| Staff Focus Group | Receiving and Discharge (R and D) |
| Medical Services | |

B. INSTITUTION OVERVIEW

Lorain Correctional Institution is a 111 acre facility, which opened in 1990. The facility serves as the Ohio Department of Rehabilitation and Correction's (DRC) reception center for the northern region of Ohio. The institution also has a small cadre population to assist with the daily operations. Due to the mission of the facility as a reception center, the facility houses inmates of all security classifications. The institution's budget is \$33,794,843 and the daily cost per inmate is \$66.92. The institution is currently ACA accredited and the date of the most recent ACA reaccreditation was October 7, 2009 through October 9, 2009.

The institution had an Internal Management Audit (IMA) from June 29, 2010 through July 1, 2010. Per the IMA report, the institution was 93.3 percent compliant with mandatory standards and 98.4 percent compliant with non-mandatory standards. There were 15 standards in non-compliance, of which four were mandatory standards. Three of the four mandatory standards that the institution was in non-compliance related to one staff member's lack of qualification to conduct and sign monthly fire and safety inspections. The other mandatory standard the institution was found in non-compliance related to chemical inventories: Inventories were either being done incorrectly or not being completed.

C. COST SAVINGS INITIATIVES

In the 129th General Assembly biennium, one of CIIC's goals is to identify cost savings across the DRC. Staff relayed the following cost savings measures proposed at the Lorain Correctional Institution:

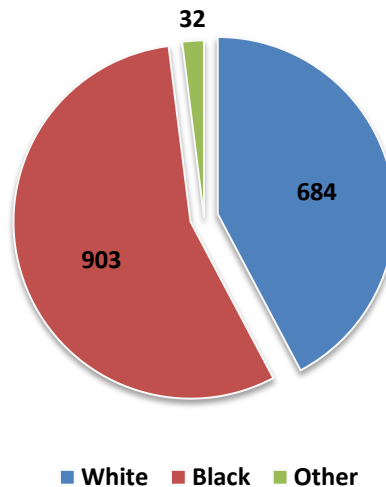
- Add third person back to RIB
- Keep employees in the loop on discipline
- Transportation overtime reduced by better scheduling of appointments
- Re-use leftovers in food service
- Contraband envelopes to be used by departments
- Eliminate/reduce free letters
- Visitors to pay for parking
- Inmate and/or family to purchase whites
- Eliminate OPI and MBE purchasing requirements
- Eliminate Re-entry folder
- Paperless System
- Allow inmates to purchase reading glasses at commissary
- Charge sales tax at commissary
- Deposit on clothes for inmates
- Eliminate going home clothes
- Regionalize medical services (Outside hospital or institution)
- Better utilization of transport vehicles
- Inmate meals – cold breakfast – hot lunch – bag dinner
- Push lawnmowers
- Charge inmates a monthly housing fee
- Shut down power via a circuit by the C/O
- Water timer/restriction in cells
- Eliminate ACA position

D. INMATE POPULATION

The rated capacity for Lorain Correctional Institution is 756. The inmate count as of April 18, 2011 was 1,619. The average age of the inmate population was 33.10 years as of April 18, 2011.

Table 1 in the Appendix provides information about the DRC population and prison rated capacity per institution as of April 4, 2011.

Chart 1
Breakdown of Inmate Population
April 18, 2011



1. Security Threat Groups

There are 34 identified security threat groups at the institution and 65 STG-affiliated inmates. This number is considerably low for an institution. However, this is likely attributed to the institution being a reception center and the difficulty with identifying inmates immediately upon their admission into the system.

The top four Security Threat Groups at Lorain CI as of April 18, 2011 are:

- Folks/Gangster Disciple: 9
- White Supremacist: 6
- Heartless Felons (DYS Marion): 4
- Aryan Brotherhood: 4

E. STAFF DEMOGRAPHICS

Of the 434 total staff at Lorain Correctional Institution as of April 1, 2011, 299 (68.9 percent) were male and 135 (31.1 percent) were female. Of the total staff, 328 (75.6 percent) were classified as white, 82 (18.9 percent) as black, and 24 (5.5 percent) as other. Table 2 of the Appendix provides more information about the staff population. There are 33 vacancies at the institution as of April 4, 2011 and the institution is currently on a hiring freeze. The vacancies consist of a correctional grievance officer, an account clerk, a correctional recreation management officer, a correctional classification specialist, a general activity therapist, a locksmith, 16 officers, two nurses, two Health Information Technicians (HIT), one correctional

nurse practitioner, one physician, one correctional food service coordinator, one secretary, one correctional advanced psych nurse, one education specialist, and one teacher.

Chart 2
Breakdown of Staff Population
April 1, 2011

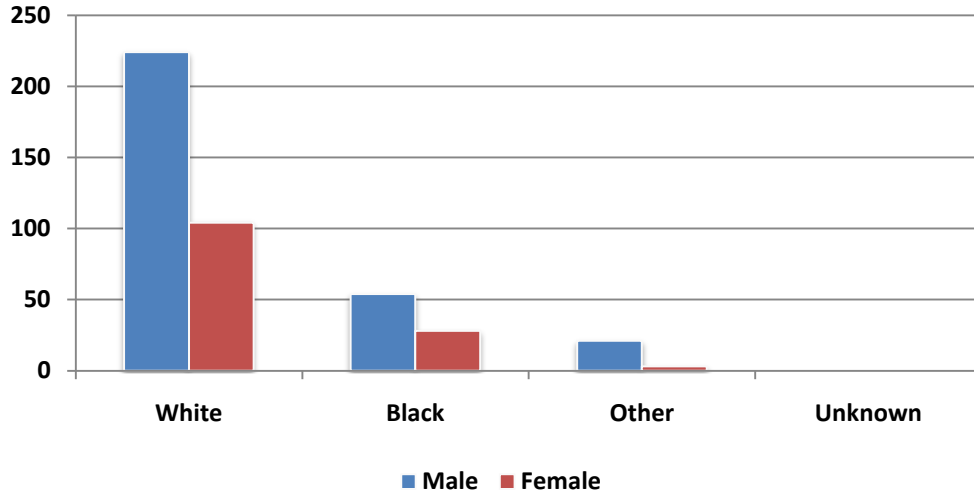
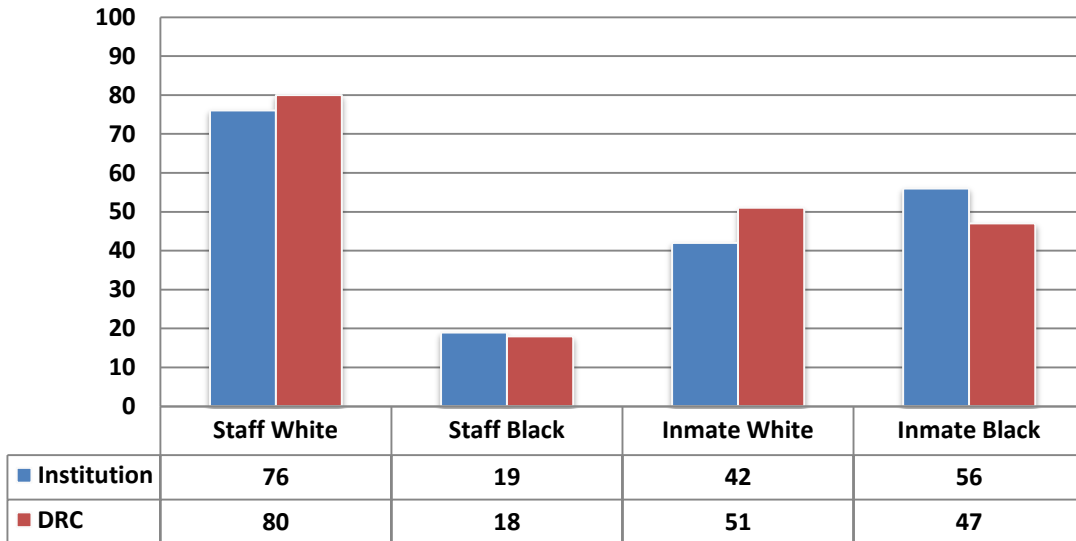


Chart 3
Staff and Inmate Comparison by Percentage of Race
April 1, 2011



1. Staff Focus Group

A staff focus group was conducted during the inspection where representative staff members from various departments at Lorain Correctional Institution were able to relay any concerns, issues, or points of pride.

The main points from the staff focus group have been included in the Initial Report (see Section II).

SECTION II. CRITICAL CONCERNS AND POINTS OF PRIDE

The following initial report was provided to the DRC Director, Assistant Director, North Regional Director, Chief of Staff, and the Lorain Correctional Institution Warden on April 19, 2011:

Initial Report of the CIIC Inspection of the Lorain Correctional institution April 18, 2011

On April 18, 2011, Senator Gayle Manning, CIIC Member Representative W. Carlton Weddington, CIIC Director Joanna Saul, CIIC Inspector Darin Furderer, CIIC Inspector Adam Jackson, CIIC Inspector Greg Geisler, CIIC Inspector Jamie Hooks, and CIIC Inspector Carol Robison inspected the Lorain Correctional Institution. The following highlights the critical concerns and the points of pride observed during the inspection.

CRITICAL CONCERNS

FACILITY CONDITIONS

Although the facility conditions have greatly improved since the previous inspection, there remained several areas with poor conditions. The shower ceilings and tiles in most of the units were deteriorating and need repaired. Several inmates demonstrated that their toilets would leak upon flushing them. Ceilings in a few of the units were falling apart and some cells in units were closed, reportedly due to unsanitary conditions. Staff relayed that the roof for the education building leaks despite recent repairs. Staff also mentioned that air conditioning in the educational building often malfunctioned and that there was no heat in the winter.

Staff relayed that capital improvement projects are in progress to fix the ceilings and that repairs for doors and windows are scheduled to follow. CIIC recommends that specific timelines be established for repairs for the above conditions to ensure accountability.

LorCI Response:

The Shower Renovation Project for buildings 7 through 10 has been approved and is currently in the design phase with Star Architectural Firm. This project is expected to begin late summer of 2011 and be completed by spring of 2012. The project includes the repair of the ceilings, tiles around the showers, and the laundry rooms. The shower ceilings in buildings 3 and 4 will be repaired by LorCI's Maintenance Department. The necessary products have been ordered and the repair should be completed in approximately 3-4 weeks.

Leaking toilets are an ongoing repair problem in our environment. We have a staff plumber who consistently completes necessary repairs.

The source of the Education Building roof leak is due to the faulty HVAC unit. The HVAC unit is scheduled to be replaced. The heat in the Education building malfunctioned for a short time period. The issue was promptly addressed. Furthermore, the installation of the HVAC

system in the Education Building will correct the heating, cooling and the leaks caused by the current system.

We have a total of five cells currently closed. No cells were closed due to unsanitary conditions. Four cells in the institution are currently closed due to water seepage that is finding its way through the expansion joints on the upper mezzanine because of the drain design. This problem will be corrected with the shower renovation. We currently have one cell in segregation closed because the sink is broken. We have sinks on order and are currently on backordered through the contract vendor.

STAFF/INMATE INTERPERSONAL COMMUNICATION

Many inmates throughout the institution alleged that some staff address them in a disrespectful manner and that this is a primary cause for inmate-on-staff assaults. Staff, separately interviewed, relayed a related need for additional staff training in interpersonal communication with inmates.

LORCI response:

CIIC did not offer a recommendation in this section; however, this issue is explained as follows: Effective Interpersonal Communication with offenders is currently part of the Pre-Service curriculum as well as the Annual In-Service Mandatory Training for employees. The topic is covered in a variety of ways through multiple courses including Mental Health, Security Issues, Offender Grievance Procedures and Prevention of Work Place Violence. The Training Advisory Committee will reassess the current strategies for training staff on IPC skills and develop a more creative format for employees to learn.

FOOD SERVICES

Food was the most commonly reported concern by inmates. Of the 84 inmates interviewed, 38 (45%) reported that food was one of the main areas that they would like to change. Concerns about food fell into two categories: quantity/quality of food and the brunch menu. Inmates reported that food portions were small and that the food itself was tasteless. Inmates also reported a wait of more than 20 hours between Friday dinner and Saturday brunch due to the brunch schedule.

LorCI response:

CIIC did not offer a recommendation in this section; however, this issue is explained as follows: Effective August 1, 2009 the ODRC implemented feeding a brunch meal on weekends and holidays. The brunch meal on weekends begins at 11:00 am.

LorCI follows the menu and portion size developed by the ODRC Licensed Dietician. After reviewing the unit feeding schedule, no housing unit waits more than 20 hours between Friday dinner and Saturday brunch.

OVERCROWDING

Despite the reduction in overcrowding, there were still four housing pods with bunks in the common area and the facility is currently at 208 percent capacity. Short term offenders and work cadre inmates relayed concerns about the availability of programming as a result of the inmate crowding. Staff relayed that having the bunks on the floor decreases visibility and therefore negatively affects both inmate and staff safety.

LorCI response:

CIIC did not offer a recommendation in this section; however, this issue is explained as follows:

Lorain Correctional Institution serves as a Reception Center for 25 northern counties. Because of our unique mission, the overcrowding is beyond our control due to the applicable laws. In addition, the Ohio Department of Rehabilitation and Correction has actively pursued strategies to improve upon crowding and reduce the number of offenders incarcerated within the state prison system. LorCI attempts to mitigate conditions related to being over the rated capacity of the facility by implementing programs and services that assists in the prevention of idleness and a successful offender reentry to the community. LorCI will continue to implement the following programs to assist with successful return to the community as well as maintaining a safe and secure facility for its inmate population:

- Reentry approved programming to address the eight core domains of criminality.*
- Ensure that ample programming space is available for reentry programs, mental health programs, recovery services programs, education programs and career technology programs.*
- Release preparation programming to educate offenders about the basic skills required to seek and maintain gainful employment, support families, establish support networks and advance educational opportunities.*
- In the event that offenders are seeking job skills that are not available, LorCI will facilitate their transfer to facilities where they may obtain those additional job skills.*
- Ensure that annual security classifications are conducted in order to facilitate appropriate offender transfer to lower security level facilities.*

In addition to the availability of a variety of programs and ample programming space, all LorCI offenders have access to the indoor and outdoor recreational facilities which include a basketball court, horseshoe pits, a walking track, volleyball, table games and other organized activities. Support services, i.e. Mental Health, Recovery Services, and Religious Services are available and readily accessible to the offender population. Medical and Mental Health staff are available 24 hours seven days a week. Offenders are provided ample opportunity to participate in programming both inside and out of the living areas, limiting congestion in any one area. General population offenders can spend an average of 6 to 8 hours a day out of their cells attending school and/or programming, working, or participating in recreational activities which all help to alleviate crowding within the housing units.

STAFF MORALE

Most staff stated that staff morale was low. Staff stated the low staff morale was due to recent legislation regarding collective bargaining, as well as the planned privatization of nearby Grafton Correctional Institution, which will have an effect on Lorain Correctional Institution. Staff relayed concerns not only that they themselves might be bumped due to more senior staff from Grafton transferring to Lorain, but also that staff were bumping into jobs for which they were not trained due to job abolishments. Staff relayed concerns that they will have the additional job duty of training new staff on top of their usual duties and that ultimately, the new staff and general confusion will result in longer times for orientation and processing and therefore an even higher population.

LorCI response:

CIIC did not offer a recommendation in this section; however, this issue is explained as follows: LorCI is currently developing a Transition Training Plan for new employees in anticipation of the upcoming sale of Grafton Correctional Institution. The Training Plan will outline the Reception process which is the primary distinction between LorCI and a parent facility, such as Grafton Correctional Institution. The plan will ensure new staff receive quality training as well as ease the transition for the new employees.

LACK OF FUNDING FOR GED TESTS

Educational staff relayed that although in the past they had one of the highest GED passage rates in the DRC, they are now affected by a lack of funding for the GED tests. Whereas it used to take a week to process the request to take the test, staff relayed that it now can take months while funding is sought and by the time funding is secured, the inmate may have transferred to the parent institution. As programming is an ongoing concern for CIIC, CIIC urges a solution to be found, even while acknowledging the current budgetary restrictions.

LorCI response:

CIIC did not offer a recommendation in this section; however, this issue is explained as follows: No institution education department has control of funding/payment for offenders to take the GED test. Funding is controlled by Ohio Central School Systems-Operations Support Center. As of the end of April 2011, the grant money was depleted. The new procedure for receiving approval for funding is that on the first and the 15th of each month, the school administrators send Mark Roberts an Access spreadsheet listing the offenders who have qualified via Pre-GED test. Several factors are considered including release date and money available. Inmates are also offered the opportunity to self-pay for the test.

LACK OF COMMUNICATION REGARDING DAILY OPERATIONS

Staff relayed that the former staff used to put out a lot of roll call notes that contained critical information regarding incidents, inmate movement, etc. Staff stated that other institutions such

as Belmont, Mansfield, and Richland have a system in place to keep staff advised and that they would like to have a similar system implemented at Lorain.

LorCI response:

CIIC did not offer a recommendation in this section; however, this issue is explained as follows: We will increase the electronic communication regarding daily operations.

POINTS OF PRIDE

INMATE AND STAFF SAFETY

Inmates throughout the inspection rated the institution as being safe. During the inspection, 84 inmates were asked to rate inmate safety on a scale of one to ten, with ten meaning “very safe.” The average of the inmate safety ratings was seven. Similarly, of the 21 staff interviewed, only three rated staff safety below a seven, with an average rating of eight. Inmates generally complimented staff, stating they are quick to quell incidents when they occur. Staff relayed the same, supporting a high staff safety rating with the quick staff response time during incidents.

COMMISSARY AND QUARTERMASTER

The commissary and the quartermaster were considered among the best in the DRC, based on the CIIC inspection team’s experience. Both were very well-maintained, well-operated, clean, and inventory was well-organized. Staff stated they modified the procedure in which inmates purchase and pick up commissary items, resulting in increased control and a reduction in theft. This is especially important and admirable given the reception population, with new inmates coming and going every week.

IMPROVEMENT OF KITCHEN

The kitchen in the inmate food services area was greatly improved compared to the previous CIIC inspection, as the area was much cleaner and operated much more smoothly. The institution only had one minor equipment issue with one out of their five kettles whereas on the previous inspection, they only had one working kettle to serve the entire facility.

OUTSTANDING SUPPORT FROM THE WARDEN

Compared to interviews conducted at other facilities, staff reported a high level of quality communication and support from the Warden. Staff stated that the Warden sends out frequent emails with information on current issues of concern. He also sends out monthly inspirational quotes and frequently thanks staff for their work. Staff stated that in bad winter weather, the Warden helps shovel snow in the staff parking lot and de-ices staff cars as a thank-you to staff. According to staff, any time that the Warden learns that a staff person is ill or has a family member that is ill, he personally calls the staff member at home and offers support and a listening ear. Staff were unanimous in their support and praise for the Warden.

OVERALL OPERATIONS

In several areas of the inspection, staff emphasized the additional duties inherent in being a reception institution. Not only do medical facilities provide ongoing care for both cadre and reception inmates, but they also perform health screenings for all reception inmates. Not only do staff do a great job of securing inmate safety, but they do it despite being the most overcrowded institution in the DRC. Not only does the facility house an overcrowded population, but they manage all security levels and have no control over who walks through the door. Staff juggle all the same responsibilities as staff at parent institutions, plus even more. Especially with the low staff morale stated above, staff are to be commended for the work that they do.

SECTION III. CIIC STATUTORY REQUIREMENTS

A. ATTEND A GENERAL MEAL PERIOD

Pursuant to Section 103.73 of the Ohio Revised Code, a general meal period was attended on the day of the Inspection. The menu consisted of a burger, two pieces of wheat bread, mixed vegetables, applesauce, beans, and coleslaw. CIIC rates this meal as poor. Inmates rated this meal as poor.

B. ATTEND AN EDUCATIONAL OR REHABILITATIVE PROGRAM

Ohio Revised Code Section 103.73 also requires attendance at an educational or rehabilitative program. During the inspection, a GED program was observed. The single instructor covered topics in literacy and math with six students. Instructional materials consisted of worksheets taken from the Steck-Vaughn copyrighted GED curriculum. Instructional delivery style was predominantly lecture, with the instructor working from a worksheet to ‘think-aloud’ the logic associated with the topic. The instructor engaged one inmate in content discussion, tapping the inmate’s prior knowledge and making contextual references. Most students were quietly listening during the period observed.

In addition to the GED class observations, three inmates were observed in the computer lab during the inspection. The lab contains 19 computers, but reportedly four of the computers need repairs. There was no formal computer technology instruction during the inspection, but each inmate was able to access the assistance of an instructor as they worked on self-guided tutorial programs.

Last, a program session of Narcotics Anonymous/Alcoholics Anonymous (NA/AA) was observed during the inspection. There were 14 inmates in the program and eight additional inmates joined the group. The session followed the format of NA/AA weekly meetings. Opening remarks from a group facilitator were followed by a testimonial from one of the inmates regarding his addiction and his commitment to a new lifestyle, beginning with his thinking processes.

C. EVALUATE THE INMATE GRIEVANCE PROCEDURE

Pursuant to Section 103.73 of the Ohio Revised Code, the CIIC is required to evaluate the inmate grievance procedure at each state correctional institution.

The inmate grievance procedure is a three step administrative process, established in DRC Administrative Rule 5120-9-31. The grievance procedure allows for investigation and nonviolent resolution of inmate concerns. The first step is an informal complaint resolution, which the inmate submits to the supervisor of the staff person or department responsible for the complaint. The second step is a notification of grievance, submitted to the Inspector. The final step is an appeal of the Inspector’s disposition to the Chief Inspector in DRC Operations Support Center.

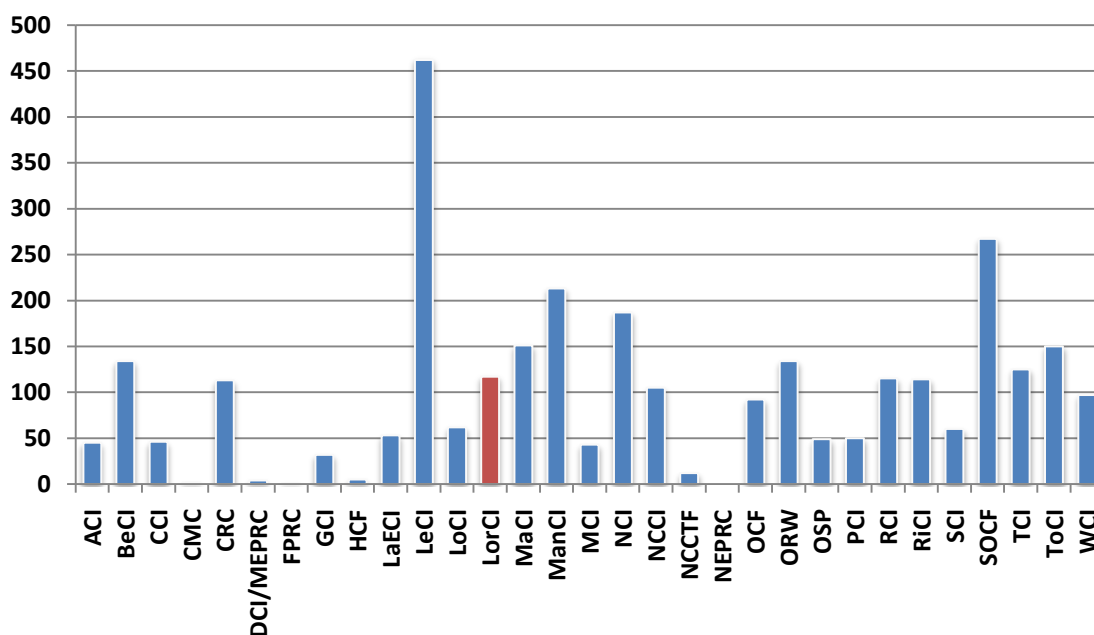
The Inspector's Activity Report for April 2010 through March 2011 is provided in Table 3 of the Appendix. According to the Inspector's report there were 33 grievances filed during the year. The report also indicates that there were 1,070 informal complaints received. Of the 31 grievances completed, 24 were denied, one was withdrawn by the inmate, and six were granted. The top two categories most grieved were Health Care (eight grievances) and Personal Property (seven grievances).

SECTION IV. KEY STATISTICS

A. USE OF FORCE

The facility reported 118 Use of Force incidents from September 2010 through February 2011. There were 80 incidents involving black inmates and 38 involving white inmates. Tables 4 and 5 of the Appendix provide an explanation of Use of Force and a breakdown of the use of force incidents from September 2010 through February 2011.

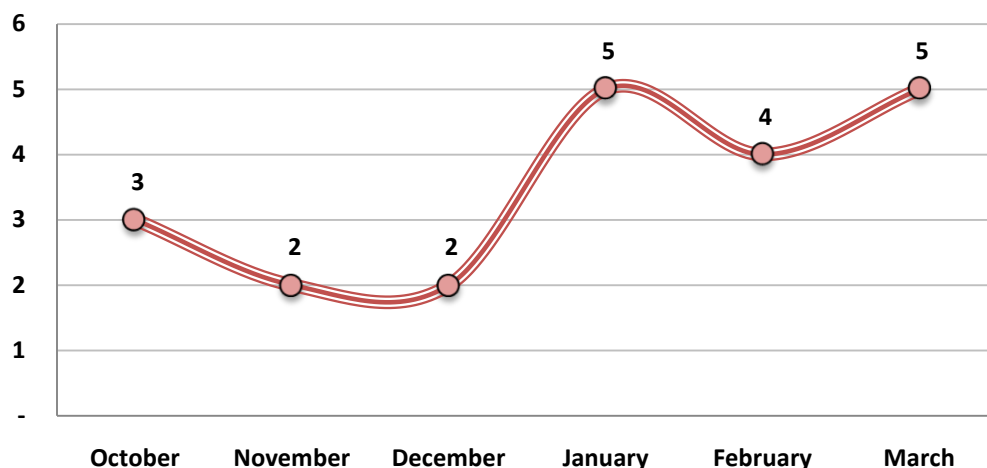
Chart 4
Use of Force by Institution
September 2010 to February 2011



B. ASSAULTS

According to information from April 18, 2010 through April 18, 2011, there were 20 **reported inmate on inmate assaults** and 24 **inmate on staff assaults**. Of the 24 inmate on staff assaults, 17 (70.8 percent) were physical assaults, five (20.8 percent) were harassment assaults, one (4.2 percent) was a sexual assault, and one (4.2 percent) was listed as inappropriate physical contact. Of the inmate on staff assaults, nine occurred in the segregation unit and seven occurred in a general population dorm/cell. The inmate on staff assaults resulted in five staff members needing medical treatment and a loss of over 192 hours of work. Tables 6 and 7 provide a snapshot of the assault data at Lorain Correctional Institution from April 18, 2010 through April 18, 2011.

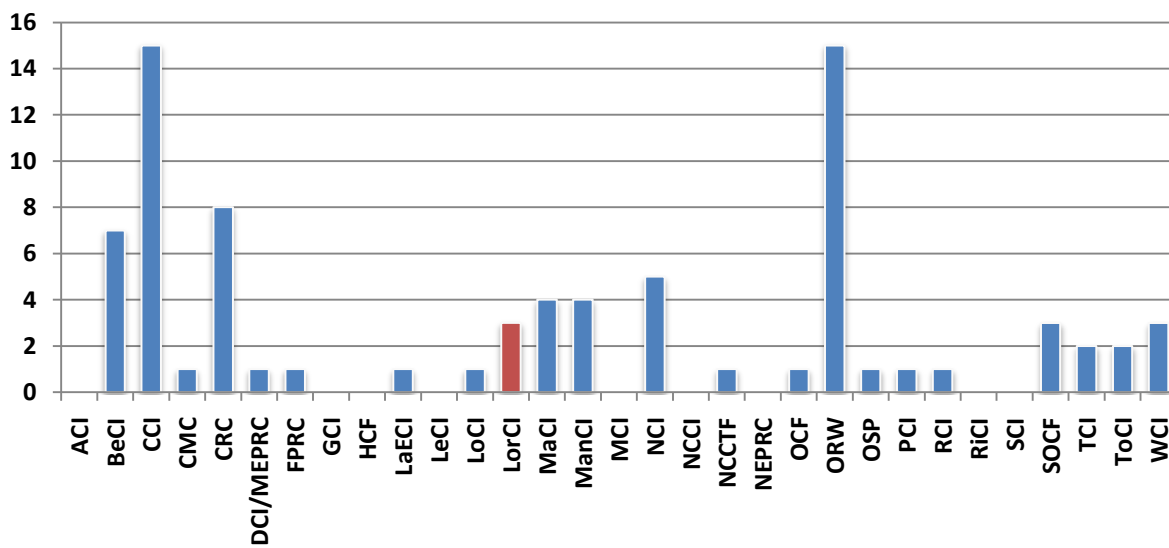
Chart 5
Total Assaults
October 2010 to March 2011



C. SUICIDES AND SUICIDE ATTEMPTS

The Ohio Department of Rehabilitation and Correction has reportedly had 81 attempted suicides from April 2010 through March 2011. Lorain Correctional Institution had no suicides and three suicide attempts during this period. Table 8 of the Appendix outlines the suicide attempts per month for each institution.

Chart 6
Suicide Attempts by Institution
April 2010 through March 2011



D. INVESTIGATOR DATA

The role of the Institutional Investigator is an essential component to ensuring the safety and security of the institution. Investigators are generally focused on investigating illegal substances, assaults, or issues regarding the professional misconduct of staff members. Investigator-initiated investigations do not constitute the total number of investigations conducted regarding contraband or any other matter in the institution, which may be initiated by other staff persons. From April 2010 through March 2011, the Investigator initiated 182 investigations. The majority of the activity, not described as “other,” involved conducting background investigations (presumably on new hires), investigations into drug related matters, and positive urinalysis.

The reports also show major contraband confiscated. From April 2010 through March 2011, several cases were initiated related to major contraband, which included: seven occurrences of small amounts of marijuana, six occurrences of small and trace amounts of crack/cocaine, four shanks, and one instance of money in the amount of \$310.00. All but two of the cases involving marijuana were referred to the Ohio State Highway Patrol for investigation. All of the cases involving crack/cocaine were referred to the Ohio State Highway Patrol for investigation. Confiscated shanks and money were destroyed. Table 9 in the Appendix provides a breakdown of cases by type.

SECTION V. OPERATIONS

A. MEDICAL SERVICES

During the inspection the overall appearance of the infirmary and exam rooms appeared clean. However, some of the holding cells were in need of painting and cleaning. There are 16 beds in the infirmary and two isolation cells. The crisis cells are located in the mental health unit (3B). The space in the medical area appears insufficient for the size of the population. There were no operational issues with the medical or dental equipment, but staff relayed the EKG machine must be held a certain way for it to work properly.

LorCI response:

The Reception Medical Expansion has been approved and will begin late summer. The expansion of the Medical Department will provide sufficient space for the medical staff and the inmate population.

The institution's health care staff is comprised of 17 Registered Nurses (RN), four Licensed Practical Nurses (LPN), five Health Information Technicians (HIT), one x-ray technician, two phlebotomists, one Quality Information Coordinator (QIC), one Assistant Health Care Administrator (HCA), one Health Care Administrator (HCA), two physicians, one Physician's Assistant, two Nurse Practitioners (NP). The institution's dental staff is comprised of three dentists, six dental assistants, and one dental hygienist.

Staff relayed that there are over 400 inmates enrolled in chronic care clinics at the institution. The backlog of chronic care inmates is approximately nine percent (36 inmates). Staff explained that they have a new physical system to expedite the new chronic care inmates.

According to monthly medical services reports, during the time period of September 2010 through February 2011, nurses performed a total of 4,451 Sick Calls and Assessments. Doctors performed a total of 4,031 Sick Calls.

During the same time period, there were 52 instances where inmates were sent to a local emergency room and 12 occurrences where inmates were sent to OSU. Medical staff treated a total of 135 inmate emergencies on site.

The Dentist conducted 1,196 scheduled appointments and 711 emergency visits, for a total of 1,907 appointments from September 2010 through February 2011.

Specialty care at Lorain Correctional Institution includes both podiatry and optometry. A total of 447 inmates were seen by the Optometrist. A total of 353 inmates were seen by the podiatrist.

The Pharmacy filled a total of 29,410 prescriptions during the six month period.

A total of 4,092 inmates were tested for tuberculosis during the six month period. There were reportedly 36 HIV conversions during the period.

Table 10 of the Appendix provides more information about the medical services at Lorain Correctional Institution.

B. MENTAL HEALTH SERVICES

The mental health staff is comprised of a Mental Health Administrator, a psych supervisor, three psychologists, five psych assistants, two Health Information Technicians (HIT), one psych/MR nurse supervisor, and five psych/MR nurses.

There were 6,761 mental health prescriptions issued from September 2010 through February 2011.

There were 277 inmates on the mental health caseload on the day of the inspection, which is lower than the DRC-wide average (346.4 as of March 2011) institutional caseload. Of those inmates, 28 were listed as Seriously Mentally Ill (SMI), which is lower than the average institutional SMI population across the DRC (150.4 as of March 2011).

Table 11 of the Appendix gives a snapshot of the mental health caseload per institution while Table 12 provides information about the amount of SMI inmates per institution.

C. FOOD SERVICES

As of 2010 the average cost per meal at Lorain Correctional Institution was \$0.81. The conditions of the food preparation area appeared clean. However, the ceiling needs repair in the kitchen above the dishwasher, as the patchwork looked poor. Staff relayed that there are 130 inmate workers assigned to food services. They explained that the inmates are trained regarding proper hygiene. Inmates as well as staff were wearing hair nets and gloves while preparing and serving the meal during the inspection. The equipment is sanitized after every meal and chemicals are properly secured.

Inmate workers are trained on the proper use of the equipment and a chit system is used to keep track of tools. Staff stated that inmates do not use knives and use cheese cutters instead. The food storage areas remained clean. However, food was not properly wrapped and covered in the walk-in freezers. There was also a smell of garbage from the disposal leading back to the loading dock and across the walk-in freezers.

LorCI response:

Food Service Manager will conduct training with staff during the monthly meeting concerning the proper storage of food.

The air deodorizer is temporarily out of service, a replacement was ordered.

Staff reported that they have a few mice and vermin issues. The institution's last health inspection was January 11, 2011 and there were no violations.

D. HOUSING UNITS

Lorain Correctional Institution has 13 housing units.

- 3A
- 3B – Mental Health Unit
- 4A
- 4B
- 4C
- 7A
- 7B
- 8A
- 8B
- 9A
- 9B
- 10A – Short Term Offender Unit
- 10B – Work Cadre

The conditions of the housing units were clean, but a few units displayed structural issues. The conditions of the showers and restroom facilities were poor (see Section II). Particularly, the ceilings in and around the 7A and 8A showers were rusted and falling apart. Staff relayed that capital improvement plans are in progress to fix these issues. There were multiple inoperable toilets in unit 3B. A few of the cells in other units were not in use for unknown reasons.

Segregation

The segregation count on the day of the inspection was 36, but the institution did not have a breakdown of the inmate's segregation status (SC, DC, LC). The conditions of segregation were unclean as cells appeared dirty with chipped paint and rusting doors. Doors and walls of cells in segregation, as well as other locations, need to be cleaned of writing and properly refinished. There were two cells out of service, but work orders had been placed. Inmates relayed concerns regarding the food and stated they do not like it. Individual log sheets were up to date and medical as well as mental health staff make rounds daily. The segregation unit was calm, with the exception of one inmate who was banging on his door.

LorCI response:

A concerted effort has been put forth to increase sanitation and will be monitored by Executive Staff.

E. COMMISSARY

The commissary area was also included during the inspection. To order commissary items, the inmates must fill out their commissary sheet, which is a form indicating items they wish to purchase and place it in a locked box with their inmate identification badge. From there, an inmate worker will fill the order and charge the inmate account. Inmates are given special badges to go to commissary where they may pick up their order and their inmate identification badge. Staff stated this process provides more control and significantly reduces the opportunity to use another inmate's identification badge.

Reception inmates are permitted to spend \$45 per week at the commissary and cadre inmates are permitted to spend \$65 per week. The profits are placed in the institution's Industrial and

Entertainment (I and E) funds, which are reinvested back into the institution. All inmate property must fit within a 2.4 cubic foot storage box.

Staff relayed that they have six inmate workers in the commissary and three staff members assigned to supervise the area. Staff explained that the commissary uses several venders, but all venders are located in Ohio.

F. RECREATION

The conditions of the recreational facilities appeared clean and well maintained. However, the television room, next to the inside gym, needed attention as chipped paint and ceiling issues were prevalent.

LorCI response:

The television room is currently being painted. The ceiling tiles will be replaced after the HVAC unit is replaced for the building.

There are multiple different recreational activities at the facility. The large gym inside contained several basketball hoops, a volleyball net, ping pong, corn hole boards, dip and pull up racks, sit up benches, and a separate fitness room. The fitness center had several treadmills, stair climbers, and other body weight exercise racks. The outside recreation area has several basketball courts and softball fields. The facility also has a barber shop in the recreation area.

SECTION VI. PROGRAMS

Inmate programming falls under several categories, which may include academic (secondary, post-secondary or college, GED/ABE or ABE), vocational, career-technical, community service, rehabilitative, recovery, or reentry. Quality of programming is considered an important issue for Ohio legislators, as demonstrated by the CIIC statutory obligation to include an educational or rehabilitative program as part of the inspection.

In recent years, however, access to programming has arisen as an additional concern, as prison overcrowding resulted in lengthy waitlists for programs. Lack of access to programs has serious consequences: It both impedes the reentry effort and results in inmates finding other, potentially less beneficial, ways to pass the time.

A. EDUCATIONAL/VOCATIONAL PROGRAMMING

According to the March 2011 monthly reports, there were no inmates enrolled in the Literacy program and no inmates on the waitlist. The monthly report indicated that there were 23 inmates enrolled in the ABE (Adult Basic and Literacy Education) program, with 37 inmates on the waitlist. There are 23 inmates enrolled in the Pre-GED program with 53 inmates on the waitlist and 18 inmates enrolled in the GED program with 89 inmates on the waitlist.

Overall, there were 94 inmates enrolled in academic/GED preparatory programs and 599 inmates on the waitlist. Most of the inmates on the waitlist, none of whom have a GED or high school diploma, will not receive a GED before transferring to their parent institution. For a full breakdown of inmate enrollment in educational and vocational programs for March 2011, see Table 15 of the Appendix.

LorCI response:

All inmates under 22 years of age are entered into either the ABE, Pre-GED, or GED waiting list, dependent upon their reading scores on the CASAS test which is administered to all newly received offenders on their third day at the institution. DRC enrollment policy requires under 22 year olds listed as mandatory on the IAT list get first priority class enrolment, followed by the rest of the offenders who are under age 22.

B. REENTRY/UNIT PROGRAMS

Reentry programming focuses on skill development in dealing with issues of conflict and confrontation or employment skills. The reentry programs at Lorain Correctional Institution include: People Skills¹, Victim Awareness², Release Preparation³, Release Preparation

¹ Show how personal values impact how we feel; think, and act and how the choices we make in life are a reflection of our values. Focuses on developing strong people skills to practice while incarcerated that will prepare the offender for release.

² Focuses on the impact crime has on the victim and the offender. Covers community justice, property crime, drunk driving, hate/bias crime, domestic violence, child abuse, crimes against the elderly, assault, sexual assault, and homicide.

Continued⁴, Iron Sharpens Iron⁵, Thinking for a Change⁶, STO-AOD⁷, Cage Your Rage⁸, Money Smart⁹, and Financial Peace University¹⁰.

C. RECOVERY SERVICES

Recovery services are designed to address an individual’s addiction to alcohol and drugs, as well as mental illnesses. The programs use cognitive behavioral therapy, basic education, peer support, and other forms of treatment therapy to assist inmates with recovery from their drug or alcohol addictions. Several of these programs are eligible for earned credit and also compliment re-entry programming. A few of the recovery services programs at Lorain Correctional Institution include: STO-AOD, NA, and AA programs. As of April 18, 2011 there were 26 inmates enrolled in the AOD class.

D. RELIGIOUS PROGRAMS

According to DRC policy 72-REG-02, the DRC “seeks to meet all inmates’ religious needs within the unique parameters of the correctional setting.” Lorain Correctional Institution offers religious programming for the following faith groups: Christianity, Islam, and Judaism. Furthermore, faith-based volunteers often come into the institution to provide faith-based studies.

Per House Bill 113 of the 127th General Assembly, CIIC monitors the DRC’s use of volunteers. According to institutional staff, Lorain Correctional Institution had 371 (as of April 18, 2011) volunteers that come into the institution to provide faith-based activities for the inmates.

E. LIBRARY SERVICES

Each institution has a library and a law library. Access to both remains a primary issue of concern for CIIC, as numerous letters have indicated inmates’ dissatisfaction with the number of hours allowed, particularly when inmates wish to perform legal research. According to staff, the library provides the following schedule for inmates:

| Day/Time | 8:00 a.m. – 11:00 a.m. | 12:00 p.m. – 3:00 p.m. | 5:00 p.m. – 7:15 p.m. |
|------------------|-------------------------------|-------------------------------|------------------------------|
| Monday | 7A | 7B | Closed |
| Tuesday | 4A | 3B | Cadre |
| Wednesday | 8A | 8B | Closed |

³ Provides career enhancement programming in direct relation to the employment domain (goal setting, work history, resumes/applications, job search, interviewing, and job retention).

⁴ Provides essential habilitation service addressing community resources to include: social security/birth certificate and temp ID, voting rights, ODJFS, community justice ABLE centers, driver’s license and traffic laws, expungement, and citizens circle/community agencies and services.

⁵ Provides faith based resource programs.

⁶ Improve skills related to social cognitive deficit areas. Poor social skills and problem solving.

⁷ Increase awareness of intoxicating substances and addictions. Assist in gaining a better understanding of the factors that have contributed to their problematic use of intoxicating substances prior to incarceration, within the prison setting, and following reentry.

⁸ Recognize and understand anger.

⁹ Enhance money management skills.

¹⁰ Enhance money management skills and teach participants how to be responsible financially.

| | | | |
|-----------------|---------------|--------|--------|
| Thursday | 3A | 10A | Cadre |
| Friday | 9A | 9B | Closed |
| Saturday | Discretionary | Cadre | Closed |
| Sunday | Closed | Closed | Closed |

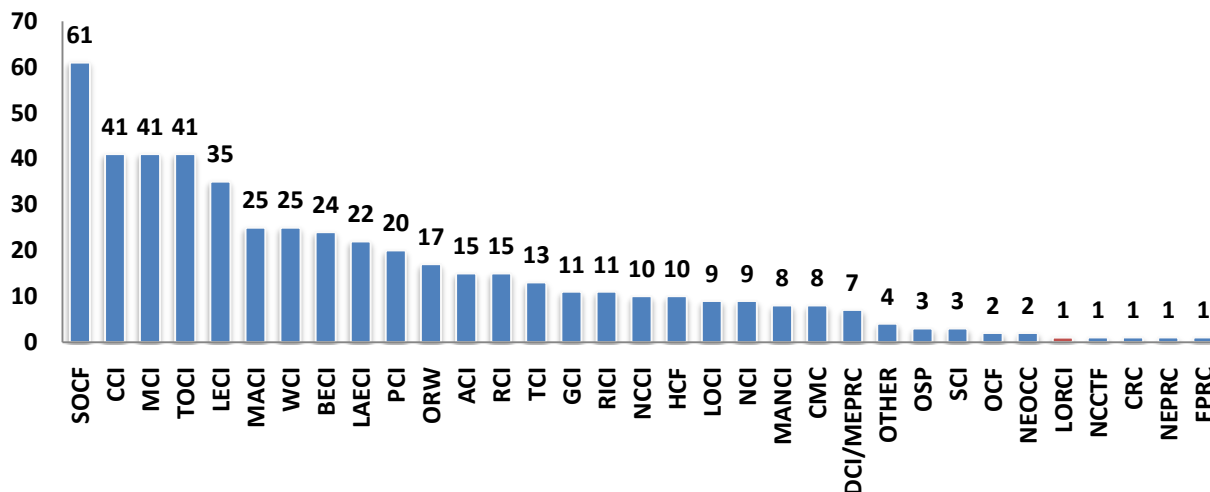
There are four to five inmate library workers and the library appeared to be clean and well maintained. The library had a set of the DRC Administrative Rules (AR) and staff explained they are liberal when it comes to making AR copies for inmates. Inmates have access to four typewriters and seven computers of which three are equipped with Westlaw and four are used for accessing the library catalog.

New materials are added multiple times per month. Most new material are donations from public libraries. Former CIIC Chairman and State Representative Tyrone Yates recommended that each institutional library have separate sections for ethnic literature – in particular, inspirational biographies – that would serve both educational and rehabilitative purposes. There is no such section designated for ethnic literature, but library staff relayed that ethnic specific literature is available to inmates, blended with the rest of the library books.

SECTION VII. CIIC CONTACTS AND CONCERNS

From January 1, 2011 through March 31, 2011, CIIC received one contact from or regarding inmates at Lorain Correctional InstitutionLorain Correctional Institution, of which four concerns were reported.

Chart 7
CIIC Contacts with Institutional Breakdown (DRC)
January 1, 2011 through March 31, 2011



Since there were not many concerns relayed to CIIC during the present biennium, a breakdown from the past six months (October 1, 2010 through March 31, 2011) is provided. During this period, CIIC received nine contacts containing 27 concerns regarding Lorain Correctional Institution. The top three concerns reported to CIIC were: Institutional Assignment (5), Security Classification (4), and Non-Grievable (4). Tables 18 and 19 of the Appendix provide information about the concerns relayed to CIIC regarding Lorain Correctional Institution.

Chart 8
Top Seven Reported Concerns to CIIC (Lorain CI)
October 1, 2010 through March 31, 2011

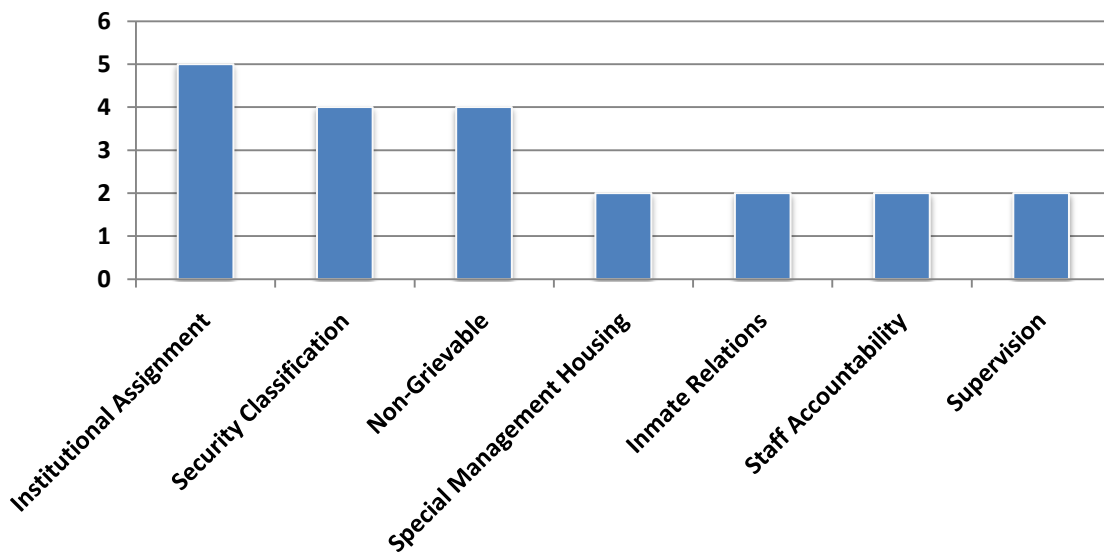
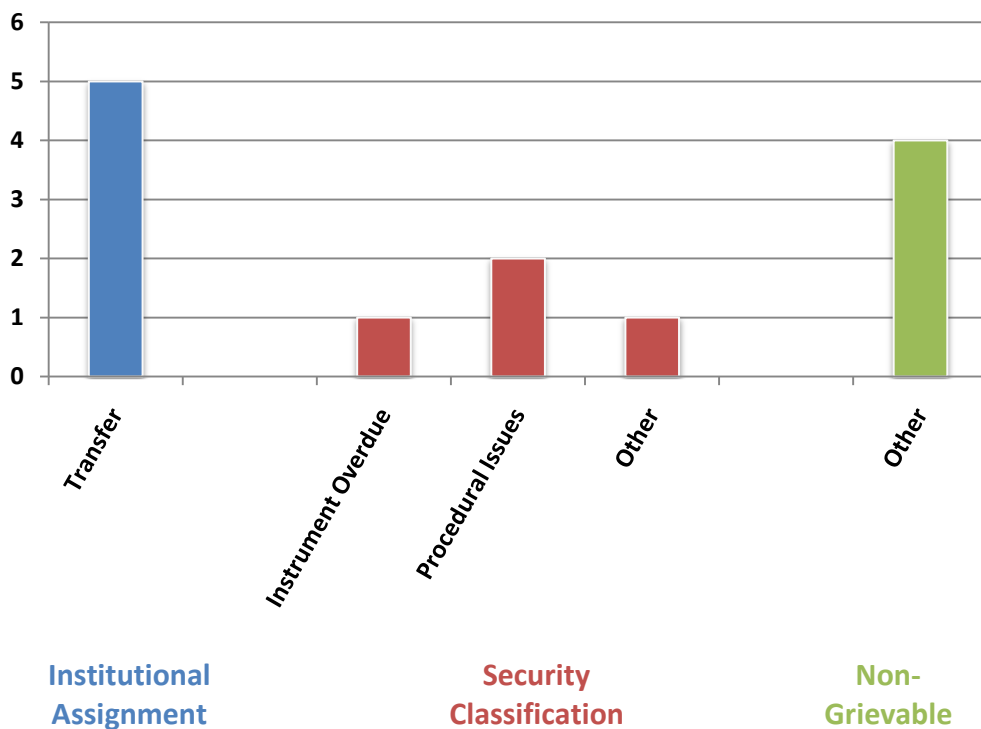


Chart 9
Breakdown of Top Three Reported Concerns (Lorain CI)
October 1, 2010 through March 31, 2011



A. INQUIRIES

Written inquiries are conducted for the most serious concerns communicated to CIIC, such as personal safety, medical, and use of force. CIIC did not conduct any written inquiries regarding inmates at Lorain Correctional Institution during the past six months (October 2010 through March 2011).

SECTION VIII. APPENDIX

A. DATA TABLES

| Institution | Rated Capacity | Count as of April 4, 2011 | Percent of Capacity |
|--------------------|-----------------------|--------------------------------------|--------------------------------|
| LorCI | 756 | 1,572 ¹¹ | 208 |
| LeCI | 1,481 | 2,815 | 190 |
| CRC | 900 | 1,678 | 186 |
| CCI | 1,673 | 2,966 | 177 |
| WCI | 807 | 1,372 | 170 |
| GCI | 939 | 1,527 | 163 |
| ManCI | 1,536 | 2,478 | 161 |
| ACI | 844 | 1,353 | 160 |
| ORW | 1,641 | 2,563 | 156 |
| HCF | 298 | 461 | 155 |
| MCI | 1,666 | 2,551 | 153 |
| TCI | 902 | 1,347 | 149 |
| BeCI | 1,855 | 2,577 | 139 |
| RiCI | 1,855 | 2,527 | 136 |
| RCI | 1,643 | 2,228 | 136 |
| NCI | 1,855 | 2,375 | 128 |
| NCCI | 1,855 | 2,305 | 124 |
| SCI | 1,358 | 1,549 | 114 |
| MaCI | 2,167 | 2,385 | 110 |
| LoCI | 2,290 | 2,387 | 104 |
| OCF | 191 | 199 | 104 |
| NCCTF | 660 | 676 | 102 |
| LaECI | 1,498 | 1,495 | 100 |
| FPRC | 480 | 478 | 100 |
| DCI | 482 | 470 | 98 |
| ToCI | 1,192 | 1,110 | 93 |
| MePRC | 352 | 324 | 92 |
| SOCF | 1,540 | 1,416 | 92 |
| PCI | 2,465 | 2,122 | 86 |
| OSP | 734 | 608 | 83 |
| NEPRC | 640 | 519 | 81 |
| CMC | 210 | 120 | 57 |
| Total | 38,765 | 50,553 | 130 |

¹¹ Count on day of inspection (April 18, 2010) was 1,619.

| Table 2. Staff Population Breakdown April 1, 2011 | |
|--|------------|
| Total Staff | 434 |
| Total Male Staff | 299 |
| White | 224 |
| Black | 54 |
| Other | 21 |
| Male Unknown Race | 0 |
| Total Female Staff | 135 |
| White | 104 |
| Black | 28 |
| Other | 3 |
| Female Unknown Race | 0 |
| Total CO | 258 |
| Total Male CO | 204 |
| White | 149 |
| Black | 40 |
| Other | 15 |
| Male CO Unknown Race | 0 |
| Total Female CO | 54 |
| White | 33 |
| Black | 19 |
| Other | 2 |
| Female CO Unknown Race | 0 |

| Table 3. Inspector's Report April 2010 through March 2011 | |
|--|--------------|
| Grievance Numbers | |
| Total Number of Grievances Filed During Year | 33 |
| Total Number of Inmates Who Filed Grievances During Year | 31 |
| Highest Number of Grievances Filed by Single Inmate | 2 |
| Grievances on Hand at Beginning of This Period | 1 |
| Grievances Received during this period | 32 |
| Total | 33 |
| Grievances Completed During This Period | 31 |
| Grievances on Hand at End of This Period | 2 |
| Total | 33 |
| ICR Summary | |
| Number of Informal Complaints Received | 1,070 |

CIIC Report: Lorain Correctional Institution 32

| | | | | |
|--|-------------|-------------|------------|--------------|
| Number of Informal Complaint Responses Received | 1,027 | | | |
| Number of Informal Complaint Responses Untimely | 104 | | | |
| Granted | | | | |
| | W | B | O | Total |
| Granted – Problem Corrected | 3 | 2 | 0 | 5 |
| Granted – Problem Noted, Correction Pending | 0 | 0 | 0 | 0 |
| Granted – Problem Noted, Report/Recommendation to the Warden | 1 | 0 | 0 | 1 |
| Subtotal Granted | 4 | 2 | 0 | 6 |
| Denied | | | | |
| Denied – Insufficient Evidence to Support Claim | 1 | 5 | 0 | 6 |
| Denied – Staff Action Was Valid Exercise of Discretion | 0 | 2 | 0 | 2 |
| Denied – No Violation of Rule, Policy, or Law | 7 | 6 | 1 | 14 |
| Denied – Not within the Scope of the Grievance Procedure | 0 | 1 | 0 | 1 |
| Denied – False Claim | 0 | 0 | 0 | 0 |
| Denied – Failure to Use Informal Complaint Procedure | 0 | 0 | 1 | 1 |
| Denied – Not within Time Limits | 0 | 0 | 0 | 0 |
| Subtotal Denied | 8 | 14 | 2 | 24 |
| Withdrawn at Inmate’s Request | 1 | 0 | 0 | 1 |
| Pending Disposition | 0 | 0 | 0 | 0 |
| TOTALS | 13 | 16 | 2 | 31 |
| Percent | 41.9 | 51.6 | 6.5 | 100 |
| Extensions | | | | |
| 14-Day Extensions | 0 | | | |
| 28-Day Extensions | 0 | | | |
| Total | 0 | | | |

| Table 4. Use of Force with Racial Breakdown September 2010 through February 2011 | | | | |
|---|--------------|--------------|--------------|--------------|
| | Black | White | Other | Total |
| Use of Force Incidents | 80 | 38 | 0 | 118 |
| Percentage | 67.8 | 32.2 | 0 | 100 |
| Action Taken on Use of Force Incidents: | | | | |
| Assigned to Use of Force Committee for Investigation | 5 | 5 | 0 | 10 |
| Logged as "No Further Action Required" | 75 | 33 | 0 | 108 |
| Referred to the employee disciplinary process | 0 | 2 | 0 | 2 |
| Referred to the Chief Inspector | 0 | 0 | 0 | 0 |
| Number of investigations not completed within 30 days and extended | 0 | 0 | 0 | 0 |
| Number of extended investigations from previous month that were: | | | | |
| Completed | 0 | 0 | 0 | 0 |
| Not Completed | 0 | 0 | 0 | 0 |

| Table 5. Use of Force with Racial and Monthly Breakdown September 2010 through February 2011 | | | | |
|---|--------------|--------------|--------------|--------------|
| | Black | White | Other | Total |
| September | 12 | 6 | 0 | 18 |
| October | 14 | 7 | 0 | 21 |
| November | 17 | 6 | 0 | 23 |
| December | 11 | 10 | 0 | 21 |
| January | 10 | 4 | 0 | 14 |
| February | 16 | 5 | 0 | 21 |
| Total | 80 | 38 | 0 | 118 |

Staff is authorized to utilize force per DRC Policy 63-UOF-01 and Administrative Rule 5120-9-01, which lists six general circumstances when a staff member may use less than deadly force against an inmate or third person as follows:

1. Self-defense from physical attack or threat of physical harm.
2. Defense of another from physical attack or threat of physical attack.
3. When necessary to control or subdue an inmate who refuses to obey prison rules, regulations, or orders.
4. When necessary to stop an inmate from destroying property or engaging in a riot or other disturbance.
5. Prevention of an escape or apprehension of an escapee.
6. Controlling or subduing an inmate in order to stop or prevent self-inflicted harm.

Administrative Rule 5120-9-02 requires the Deputy Warden of Operations to review the use of force packet prepared on each use of force incident, and to determine if the type and amount of force was appropriate and reasonable for the circumstances, and if administrative rules, policies, and post orders

were followed. The Warden reviews the submission and may refer any use of force incident to the two person use of force committee or to the Chief Inspector. The Warden must refer an incident to a use of force committee or the Chief Inspector. The Warden **must** refer an incident to a use of force committee or the Chief Inspector in the following instances:

- Factual circumstances are not described sufficiently.
- The incident involved serious physical harm.
- The incident was a significant disruption to normal operations.
- Weapons, PR-24 strikes or lethal munitions were used.

| Table 6. | | |
|---|---------------------------|-------------------------------|
| Assaults: Inmate on Inmate | | |
| April 18, 2010 to April 18, 2011 | | |
| Category of Assault | Number of Assaults | Percentage of Assaults |
| Physical Assault | 19 | 95 |
| Sexual Assault | 1 | 5 |
| Total | 20 | 100 |

| Table 7. | | |
|---|---------------------------|-------------------------------|
| Assaults: Inmate on Staff | | |
| April 18, 2010 to April 18, 2011 | | |
| Category of Assault | Number of Assaults | Percentage of Assaults |
| Physical Assault | 17 | 70.8 |
| Harassment Assault | 5 | 20.8 |
| Sexual Assault | 1 | 4.2 |
| Inappropriate Physical Contact | 1 | 4.2 |
| Total | 24 | 100 |

| | Apr | May | Jun | Jul | Aug | Sept | Oct | Nov | Dec | Jan | Feb | Mar | Total |
|--------------|------------|------------|------------|------------|------------|-------------|------------|------------|------------|------------|------------|------------|--------------|
| ACI | 0 | 0 | 0 | 0 | 0 | 0 | 0 | 0 | 0 | 0 | 0 | 0 | 0 |
| BeCI | 2 | 0 | 2 | 0 | 0 | 0 | 0 | 1 | 1 | 0 | 1 | 0 | 7 |
| CCI | 0 | 0 | 2 | 3 | 1 | 1 | 1 | 1 | 2 | 1 | 1 | 2 | 15 |
| CMC | 0 | 0 | 0 | 0 | 1 | 0 | 0 | 0 | 0 | 0 | 0 | 0 | 1 |
| CRC | 0 | 0 | 2 | 0 | 1 | 1 | 0 | 0 | 0 | 1 | 3 | 0 | 8 |
| DCI | 0 | 0 | 0 | 0 | 0 | 0 | 0 | 0 | 0 | 0 | 1 | 0 | 1 |
| FPRC | 0 | 1 | 0 | 0 | 0 | 0 | 0 | 0 | 0 | 0 | 0 | 0 | 1 |
| GCI | 0 | 0 | 0 | 0 | 0 | 0 | 0 | 0 | 0 | 0 | 0 | 0 | 0 |
| HCF | 0 | 0 | 0 | 0 | 0 | 0 | 0 | 0 | 0 | 0 | 0 | 0 | 0 |
| LaECI | 0 | 1 | 0 | 0 | 0 | 0 | 0 | 0 | 0 | 0 | 0 | 0 | 1 |
| LeCI | 0 | 0 | 0 | 0 | 0 | 0 | 0 | 0 | 0 | 0 | 0 | 0 | 0 |
| LoCI | 0 | 0 | 0 | 0 | 0 | 0 | 0 | 0 | 0 | 0 | 1 | 0 | 1 |
| LorCI | 0 | 0 | 1 | 0 | 0 | 1 | 0 | 0 | 0 | 0 | 1 | 0 | 3 |
| MaCI | 1 | 0 | 0 | 1 | 0 | 1 | 0 | 1 | 0 | 0 | 0 | 0 | 4 |
| ManCI | 0 | 0 | 0 | 0 | 0 | 0 | 1 | 1 | 1 | 1 | 0 | 0 | 4 |
| MCI | 0 | 0 | 0 | 0 | 0 | 0 | 0 | 0 | 0 | 0 | 0 | 0 | 0 |
| NCCI | 1 | 1 | 0 | 2 | 0 | 0 | 0 | 0 | 0 | 1 | 0 | 0 | 5 |
| NCCTF | 0 | 0 | 0 | 0 | 0 | 0 | 0 | 0 | 0 | 0 | 0 | 0 | 0 |
| NCI | 0 | 0 | 0 | 0 | 0 | 0 | 1 | 0 | 0 | 0 | 0 | 0 | 1 |
| NEPRC | 0 | 0 | 0 | 0 | 0 | 0 | 0 | 0 | 0 | 0 | 0 | 0 | 0 |
| OCF | 0 | 0 | 0 | 0 | 0 | 0 | 1 | 0 | 0 | 0 | 0 | 0 | 1 |
| ORW | 0 | 1 | 1 | 1 | 0 | 0 | 0 | 4 | 5 | 1 | 2 | 0 | 15 |
| OSP | 0 | 0 | 0 | 0 | 0 | 0 | 0 | 0 | 0 | 1 | 0 | 0 | 1 |
| PCI | 0 | 0 | 0 | 0 | 0 | 0 | 0 | 0 | 0 | 0 | 1 | 0 | 1 |
| RCI | 1 | 0 | 0 | 0 | 0 | 0 | 0 | 0 | 0 | 0 | 0 | 0 | 1 |
| RiCI | 0 | 0 | 0 | 0 | 0 | 0 | 0 | 0 | 0 | 0 | 0 | 0 | 0 |
| SCI | 0 | 0 | 0 | 0 | 0 | 0 | 0 | 0 | 0 | 0 | 0 | 0 | 0 |
| SOCF | 0 | 0 | 0 | 1 | 0 | 0 | 1 | 0 | 0 | 0 | 1 | 0 | 3 |
| TCI | 0 | 1 | 0 | 0 | 0 | 0 | 0 | 0 | 0 | 0 | 1 | 0 | 2 |
| ToCI | 0 | 0 | 0 | 0 | 0 | 0 | 0 | 0 | 2 | 0 | 0 | 0 | 2 |
| WCI | 0 | 1 | 1 | 0 | 0 | 0 | 0 | 1 | 0 | 0 | 0 | 0 | 3 |
| Total | 5 | 6 | 9 | 8 | 3 | 4 | 5 | 9 | 11 | 6 | 13 | 2 | 81 |

Table 9.
Investigator Monthly Report Summary by Type of Investigation
April 2010 to March 2011

| Investigations | Cases Initiated |
|-----------------------------------|------------------------|
| Drugs (Staff/Inmate) | 1 |
| Drugs (Inmate/Visitor) | 11 |
| Drugs (Mail/Package) | 0 |
| Drugs (Staff) | 0 |
| Drugs (other) | 18 |
| Positive Urinalysis | 28 |
| Staff/Inmate Relationship | 12 |
| Staff Misconduct | 11 |
| Assault-(Inmate on Staff) | 15 |
| Assault (Inmate on Inmate) | 20 |
| Sexual Assault (Inmate on Inmate) | 0 |
| Other: | 35 |
| Background Investigations | 31 |
| Total | 182 |

Table 10.
Medical Services
September 2010 through February 2011

| | September | October | November | December | January | February | Total |
|-----------------------------------|------------------|----------------|-----------------|-----------------|----------------|-----------------|--------------|
| Sick Call | | | | | | | |
| Nurse Intake Screen | 901 | 814 | 753 | 755 | 784 | 607 | 4,614 |
| Nurse Referrals to Doctor | 232 | 123 | 203 | 159 | 216 | 178 | 1,111 |
| New Intakes Referred to Physician | 72 | 77 | 43 | 66 | 53 | 39 | 350 |
| Nurse Sick Call and Assessments | 823 | 789 | 755 | 631 | 880 | 573 | 4,451 |
| Doctor Sick Call | 714 | 759 | 711 | 649 | 554 | 644 | 4,031 |
| Doctor History and Physicals Done | 787 | 726 | 798 | 698 | 618 | 581 | 4,208 |
| Doctor No Shows | 71 | 101 | 38 | 42 | 112 | 74 | 438 |
| Emergency Triage | | | | | | | |
| Sent to local | 10 | 11 | 8 | 5 | 11 | 7 | 52 |

CIIC Report: Lorain Correctional Institution 37

| | | | | | | | |
|---|-----|-----|-----|-----|-----|-----|--------------|
| ER | | | | | | | |
| Sent to OSU ER | 2 | 1 | 1 | 1 | 3 | 4 | 12 |
| Sent from Local to OSU | 1 | 2 | 2 | 2 | 0 | 0 | 7 |
| Inmate Emergencies Treated On Site | 234 | 271 | 236 | 113 | 168 | 48 | 1,070 |
| Staff Treated | 43 | 16 | 18 | 22 | 22 | 14 | 135 |
| Visitors Treated | 0 | 0 | 2 | 0 | 0 | 0 | 2 |
| Infirmery Care | | | | | | | |
| Bed Days Used for Medical | 33 | 59 | 24 | 18 | 59 | 32 | 225 |
| Bed Days Used for Mental | 0 | 0 | 0 | 0 | 0 | 0 | 0 |
| Bed Days Used for Security | 55 | 68 | 11 | 0 | 49 | 28 | 211 |
| Dental Care | | | | | | | |
| Scheduled Visits | 235 | 222 | 199 | 209 | 169 | 162 | 1,196 |
| Emergency Visits | 112 | 121 | 152 | 114 | 121 | 91 | 711 |
| Total Visits | 347 | 343 | 351 | 323 | 290 | 253 | 1,907 |
| No Shows | 0 | 0 | 0 | 0 | 0 | 0 | 0 |
| AMAs | 29 | 31 | 29 | 15 | 6 | 18 | 128 |
| Specialty Care On Site | | | | | | | |
| Optometry | | | | | | | |
| Consults | 174 | 93 | 100 | 120 | 100 | 2 | 589 |
| Inmates Seen | 73 | 78 | 73 | 62 | 75 | 86 | 447 |
| Emergencies Seen | 3 | 4 | 3 | 0 | 2 | 5 | 17 |
| Hours On Site | 11 | 10 | 9 | 10 | 9 | 12 | 61 |
| Podiatry | | | | | | | |
| Consults | 126 | 80 | 48 | 120 | 72 | 0 | 446 |
| Inmates Seen | 91 | 61 | 38 | 75 | 50 | 38 | 353 |
| Emergencies Seen | 4 | 6 | 3 | 2 | 2 | 1 | 18 |
| Hours On | 15 | 8 | 5 | 13 | 9 | 9 | 59 |

CIIC Report: Lorain Correctional Institution 38

| Site | | | | | | | |
|----------------------------------|-------|-------|-------|-------|-------|-------|---------------|
| OB Gyn | | | | | | | |
| Consults | 0 | 0 | 0 | 0 | 0 | 0 | 0 |
| Inmates Seen | 0 | 0 | 0 | 0 | 0 | 0 | 0 |
| Emergencies Seen | 0 | 0 | 0 | 0 | 0 | 0 | 0 |
| Hours On Site | 0 | 0 | 0 | 0 | 0 | 0 | 0 |
| Pharmacy | | | | | | | |
| Medical Refills | 945 | 1,066 | 1,048 | 904 | 1,007 | 799 | 5,769 |
| Mental Refills | 395 | 399 | 373 | 367 | 343 | 271 | 2,148 |
| Medical New Prescriptions | 3,378 | 3,067 | 2,936 | 2,884 | 2,537 | 2,078 | 16,880 |
| Mental New Prescriptions | 842 | 820 | 803 | 858 | 750 | 540 | 4,613 |
| Total Prescriptions | 5,560 | 5,352 | 5,160 | 5,013 | 4,637 | 3,688 | 29,410 |
| Medical Controlled Prescriptions | 21 | 16 | 12 | 19 | 1,264 | 7 | 1,339 |
| Mental Controlled Prescriptions | 21 | 16 | 12 | 19 | 8 | 7 | 83 |
| Lab Data | | | | | | | |
| Blood Draws | 1,319 | 1,260 | 1,245 | 1,390 | 1,166 | 1,027 | 7,407 |
| DNA Blood Draws | 247 | 232 | 246 | 195 | 203 | 143 | 1,266 |
| Mental Health Blood Draws | 135 | 124 | 143 | 276 | 267 | 162 | 1,107 |
| EKGs | 266 | 93 | 105 | 349 | 155 | 184 | 1,152 |
| Non CMC X-Rays | 550 | 594 | 391 | 480 | 416 | 254 | 2,685 |
| Infections Disease Data | | | | | | | |
| Number Inmates Tested for TB | 1,117 | 747 | 843 | 673 | 712 | 0 | 4,092 |
| Positive PPD Test | 18 | 22 | 31 | 33 | 21 | 0 | 125 |
| Staff PPD | 354 | 0 | 0 | 0 | 0 | 0 | 354 |
| Inmates Completed INH | 0 | 0 | 0 | 0 | 1 | 0 | 1 |

CIIC Report: Lorain Correctional Institution 39

| | | | | | | | |
|--------------------------|----|---|----|----|----|---|-----------|
| Inmates Incomplete INH | 11 | 9 | 10 | 21 | 12 | 0 | 63 |
| Inmates Refusing INH | 1 | 0 | 0 | 0 | 0 | 0 | 1 |
| HIV Positive Inmates | 0 | 0 | 0 | 0 | 0 | 0 | 0 |
| Inmate HIV Conversions | 7 | 9 | 9 | 0 | 11 | 0 | 36 |
| Deaths | | | | | | | |
| Deaths Expected | 0 | 0 | 0 | 0 | 0 | 0 | 0 |
| Deaths Unexpected | 0 | 0 | 0 | 0 | 0 | 0 | 0 |
| Suicides | 0 | 0 | 0 | 0 | 0 | 0 | 0 |
| Homicides | 0 | 0 | 0 | 0 | 0 | 0 | 0 |
| Deaths at Local Hospital | 0 | 0 | 0 | 0 | 0 | 0 | 0 |
| Deaths at OSU | 0 | 0 | 0 | 0 | 0 | 0 | 0 |
| Deaths at CMC | 0 | 0 | 0 | 0 | 0 | 0 | 0 |

Table 11.
Percent of Prison Population on the Mental Health Caseload by Institution
March 2011

| Institution | Percent of Total Population on Mental Health Caseload | Institution Population(as of February 28, 2011) | Number of Inmates on Mental Health Caseload March 2011 |
|-----------------------------------|--|--|---|
| Oakwood CF | 74.7 | 194 | 145 |
| Franklin Pre-Release Center | 54.5 | 455 | 248 |
| Northeast Pre-Release Cent. | 52.8 | 528 | 279 |
| Ohio Reformatory for Women | 49.1 | 2,548 | 1,251 |
| Southern Ohio CF | 31.2 | 1,410 | 440 |
| Trumbull CI | 25.0 | 1,360 | 340 |
| Chillicothe CI | 24.2 | 2,903 | 702 |
| Toledo CI | 24.1 | 1,154 | 278 |
| Allen CI | 23.1 | 1,341 | 310 |
| Marion CI | 22.7 | 2,313 | 526 |
| Belmont CI | 21.6 | 2,541 | 550 |
| Warren CI | 21.5 | 1,390 | 299 |
| Hocking CF | 21.2 | 471 | 100 |
| Correctional Reception Cent. | 21.1 | 1,541 | 325 |
| Mansfield CI | 20.5 | 2,497 | 511 |
| Richland CI | 20.2 | 2,539 | 513 |
| North Central CI | 19.1 | 2,264 | 432 |
| Madison CI | 17.9 | 2,327 | 417 |
| North Coast Corr. Treat. Facility | 17.8 | 690 | 123 |
| Corrections Medical Center | 17.2 | 122 | 21 |
| Lebanon CI | 16.9 | 2,813 | 476 |
| Southeastern CI | 16.9 | 1,541 | 260 |
| Grafton CI | 16.4 | 1,540 | 252 |
| Noble CI | 16.1 | 2,343 | 378 |
| London CI | 15.9 | 2,504 | 398 |
| Lorain CI | 15.9 | 1,539 | 245 |
| Pickaway CI | 15.4 | 2,141 | 330 |
| Lake Erie CI | 13.8 | 1,486 | 205 |
| Ross CI | 11.9 | 2,588 | 307 |
| Ohio State Penitentiary | 11.8 | 604 | 71 |
| Dayton CI | 0.6 | 794 | 5 |
| | | | |
| | | | |
| TOTALS | 21.3 | 50,481 | 10,737 |

| Table 12. Seriously Mentally Ill by Institution with Number and Percent March 2011 | | |
|---|---|----------------|
| Institution | Number of Seriously Mentally Ill | Percent |
| Ohio Reformatory for Women (Females) | 603 | 12.9 |
| Chillicothe Correctional Institution | 373 | 8.0 |
| Belmont Correctional Institution | 239 | 5.1 |
| Lebanon Correctional Institution | 209 | 4.5 |
| Madison Correctional Institution | 210 | 4.5 |
| Southern Ohio Correctional Facility | 212 | 4.5 |
| Correctional Reception Center | 191 | 4.1 |
| Noble Correctional Institution | 191 | 4.1 |
| Warren Correctional Institution | 190 | 4.1 |
| Marion Correctional Institution | 180 | 3.9 |
| Mansfield Correctional Institution | 179 | 3.8 |
| Allen Correctional Institution | 174 | 3.7 |
| London Correctional Institution | 171 | 3.7 |
| North Central Correctional Institution | 163 | 3.5 |
| Northeast Pre-Release Center (Females) | 161 | 3.5 |
| Pickaway Correctional Institution | 149 | 3.2 |
| Southeastern Correctional Institution | 137 | 2.9 |
| Grafton Correctional Institution | 132 | 2.8 |
| Richland Correctional Institution | 125 | 2.7 |
| Franklin Pre-Release Center (Females) | 113 | 2.4 |
| Oakwood Correctional Facility | 107 | 2.3 |
| Toledo Correctional Institution | 97 | 2.1 |
| Trumbull Correctional Institution | 98 | 2.1 |
| Lake Erie Correctional Institution | 86 | 1.8 |
| Ross Correctional Institution | 84 | 1.8 |
| Hocking Correctional Facility | 31 | 0.7 |
| Lorain Correctional Institution | 34 | 0.7 |
| Corrections Medical Center | 10 | 0.2 |
| Ohio State Penitentiary | 8 | 0.2 |
| North Coast Correctional Treatment Facility | 4 | 0.1 |
| Dayton Correctional Institution | 0 | 0 |
| Total | 4,661 | 100% |

| Table 13. Monthly Academic Enrollment and Academic Waitlist February 2011 | | |
|--|--|---|
| | Monthly Academic Enrollment – February 2011 | YTD Academic Waitlist – February 2011* |
| ACI/OCF | 122 | 135 |
| BECI | 402 | 648 |
| CCI | 475 | 333 |
| CMC | 0 | 0 |
| CRC | 217 | 141 |
| DCI/MEPRC | 112 | 40 |
| FPRC | 133 | 83 |
| GCI | 141 | 105 |
| HCF | 64 | 104 |
| LAECI | 184 | 249 |
| LECI | 264 | 797 |
| LOCI | 268 | 169 |
| LORCI | 112 | 257 |
| MACI | 200 | 709 |
| MANCI | 170 | 556 |
| MCI | 263 | 180 |
| NCI | 200 | 783 |
| NCCI | 235 | 329 |
| NCCTF | 80 | 174 |
| NEPRC | 148 | 33 |
| ORW | 576 | 628 |
| OSP | 102 | 65 |
| PCI | 292 | 589 |
| RICI | 354 | 355 |
| RCI | 155 | 269 |
| SCI | 391 | 492 |
| SOCF | 82 | 221 |
| TOCI | 122 | 162 |
| TCI | 203 | 163 |
| WCI | 136 | 317 |
| Total | 6,203 | 9,086 |
| *Total number of inmates shown as 'Inmates without GED and on Academic Wait List' represents a one-day snapshot of the number of inmates on the institutional academic wait lists. | | |

| Table 14. GEDs Passed and Inmates on Academic Waitlist February 2011 | | |
|--|--|---|
| | GEDs PASSED - YTD as of February 2011 | Inmates Without GED and on Academic Wait List - YTD February 2011* |
| ACI/OCF | 13 | 135 |
| BECI | 91 | 648 |
| CCI | 80 | 333 |
| CMC | 0 | 0 |
| CRC | 24 | 141 |
| DCI/MEPRC | 15 | 40 |
| FPRC | 39 | 83 |
| GCI | 29 | 105 |
| HCF | 1 | 104 |
| LAECI | 41 | 249 |
| LECI | 15 | 797 |
| LOCI | 46 | 169 |
| LORCI | 18 | 257 |
| MACI | 46 | 709 |
| MANCI | 62 | 556 |
| MCI | 38 | 180 |
| NCI | 103 | 783 |
| NCCI | 77 | 329 |
| NCCTF | 43 | 174 |
| NEPRC | 5 | 33 |
| ORW | 61 | 628 |
| OSP | 26 | 65 |
| PCI | 14 | 589 |
| RICI | 73 | 355 |
| RCI | 60 | 269 |
| SCI | 50 | 492 |
| SOCF | 59 | 221 |
| TOCI | 15 | 162 |
| TCI | 33 | 163 |
| WCI | 14 | 317 |
| TOTAL | 1,191 | 9,086 |
| *Total number of inmates shown as 'Inmates without GED and on Academic Wait List' represents a one-day snapshot of the number of inmates on the institutional academic wait lists. | | |

**Table 15.
Inmate Enrollment in Educational Programs
March 2011**

| Program | For Month | < 22 | YTD | Waiting List | # of Certificates | | % Attained Goals | | | |
|---|-----------|-----------|------------|--------------|-------------------|-------------|------------------|-------------|---|---|
| | | | | | Month | YTD | QTR | YTD | | |
| Literacy | 0 | 0 | 0 | 0 | 0 | 0 | 0% | 0% | | |
| ABLE (Adult Basic and Literacy Education) | 23 | 21 | 183 | 37 | 0 | 0 | 100% | 100% | | |
| Pre-GED | 23 | 20 | 84 | 53 | 0 | 0 | 100% | 100% | | |
| GED | 18 | 15 | 74 | 89 | 1 | 5 | 100% | 100% | | |
| GED Evening | 30 | 8 | 258 | 121 | 19 | 69 | 100% | 100% | | |
| HS/HS Options | 0 | 0 | 0 | 0 | 0 | 0 | 0% | 0% | | |
| Academic Total | 94 | 64 | 599 | 300 | 20 | 74 | | | | |
| | | | | | | | | | | |
| Career-Tech (by program) | For Month | < 22 | YTD | Waiting List | # of Certificates | | % Attained Goals | | | |
| | | | | | Month | YTD | QTR | YTD | | |
| | | | | | | | | | | |
| Career-Tech Total | 0 | 0 | 0 | 0 | 0 | 0 | | | | |
| | | | | | | | | | | |
| Special Education | 21 | 21 | 122 | 46 | 0 | 0 | | | | |
| Title One | 0 | 0 | 0 | 0 | 0 | 0 | | | | |
| EIPP (Education Intensive Prison Program) | 0 | 0 | 0 | 0 | 0 | 0 | | | | |
| TEP (Transitional Education Program) | 0 | 0 | 0 | 0 | 0 | 0 | | | | |
| YTP | 0 | 0 | 0 | 0 | 0 | 0 | | | | |
| ESL (English as Second Language) | 0 | 0 | 0 | 0 | 0 | 0 | | | | |
| Career Enhancement | 80 | 26 | 661 | 0 | 65 | 527 | | | | |
| | | | | | 50% | 100% | 50% | 100% | - | - |

CIIC Report: Lorain Correctional Institution 45

| | | | | | | | | | | |
|---------------------------------|------------------|----------------|--------------|---------------------|--------------------------|------------|-------------------------|------------|---------------------|------------|
| Apprenticeship | 4 | 0 | 5 | 1 | 0 | 0 | 1 | 0 | | |
| | For Month | < 22 | YTD | Waiting List | Program Cert. | | 1-Year Cert. | | 2-Year Cert. | |
| | | | | | Term | YTD | Term | YTD | Term | YTD |
| Advanced Job Training | 0 | 0 | 0 | 0 | 0 | 0 | 0 | 0 | 0 | 0 |
| | For Month | < 22 | YTD | Waiting List | # of Certificates | | % Attained Goals | | | |
| | | | | | Month | YTD | QTR | YTD | | |
| Total GEDs given | 4 | | 25 | | | | | | | |
| Total GEDs passed | 3 | | 21 | | | | | | | |
| Literacy Tutors | 0 | | 0 | | | | | | | |
| Other Tutors | 0 | | 0 | | | | | | | |
| Tutors Trained | 0 | | 0 | | | | | | | |
| Tutor Hours | 0 | | 0 | | | | | | | |
| Children served in Reading Room | 109 | | 1,312 | | | | | | | |
| Narrator Hours | 31 | | 445 | | | | | | | |
| Work Keys | 0 | | 0 | | | | | | | |

Table 16.
CIIC Contacts with Institutional Breakdown
January 1, 2011 to March 31, 2011

| Institution | Contacts | Percent |
|---|-----------------|----------------|
| Southern Ohio Correctional Facility | 61 | 12.3% |
| Chillicothe Correctional Institution | 41 | 8.2% |
| Marion Correctional Institution | 41 | 8.2% |
| Toledo Correctional Institution | 41 | 8.2% |
| Lebanon Correctional Institution | 35 | 7.0% |
| Madison Correctional Institution | 25 | 5.0% |
| Warren Correctional Institution | 25 | 5.0% |
| Belmont Correctional Institution | 24 | 4.8% |
| Lake Erie Correctional Institution | 22 | 4.4% |
| Pickaway Correctional Institution | 20 | 4.0% |
| Ohio Reformatory for Women | 17 | 3.4% |
| Allen Correctional Institution | 15 | 3.0% |
| Ross Correctional Institution | 15 | 3.0% |
| Trumbull Correctional Institution | 13 | 2.6 % |
| Grafton Correctional Institution | 11 | 2.2 % |
| Richland Correctional Institution | 11 | 2.2 % |
| Hocking Correctional Facility | 10 | 2.0 % |
| North Central Correctional Institution | 10 | 2.0 % |
| London Correctional Institution | 9 | 1.8 % |
| Noble Correctional Institution | 9 | 1.8 % |
| Corrections Medical Center | 8 | 1.6 % |
| Mansfield Correctional Institution | 8 | 1.6 % |
| Dayton Correctional Institution | 7 | 1.4 % |
| Other | 4 | 0.8 % |
| Ohio State Penitentiary | 3 | 0.6 % |
| Southeastern Correctional Institution | 3 | 0.6 % |
| North East Pre-release | 2 | 0.4 % |
| Oakwood Correctional Facility | 2 | 0.4 % |
| Northeast Ohio Correctional Center | 2 | 0.4 % |
| Corrections Reception Center | 1 | 0.2 % |
| Franklin Pre-release Center | 1 | 0.2 % |
| Lorain Correctional Institution | 1 | 0.2 % |
| North Coast Correctional Treatment Facility | 1 | 0.2 % |
| Montgomery Education Pre-release | 0 | 0 |
| Total | 498 | 100% |

| Table 17. | | |
|---|-----------------|----------------|
| CIIC Concerns by Institutional Breakdown | | |
| January 1, 2011 to March 31, 2011 | | |
| Institution | Concerns | Percent |
| Southern Ohio Correctional Facility | 293 | 15.22 |
| Toledo Correctional Institution | 218 | 11.40 |
| Chillicothe Correctional Institution | 158 | 8.26 |
| Marion Correctional Institution | 144 | 7.53 |
| Lebanon Correctional Institution | 121 | 6.32 |
| Belmont Correctional Institution | 89 | 4.65 |
| Warren Correctional Institution | 88 | 4.60 |
| Lake Erie Correctional Institution | 79 | 4.12 |
| Pickaway Correctional Institution | 74 | 3.87 |
| Richland Correctional Institution | 73 | 3.82 |
| Madison Correctional Institution | 71 | 3.71 |
| Hocking Correctional Facility | 61 | 3.20 |
| Trumbull Correctional Institution | 59 | 3.20 |
| Ross Correctional Institution | 51 | 2.67 |
| Ohio Reformatory for Women | 48 | 2.51 |
| Allen Correctional Institution | 39 | 2.04 |
| Noble Correctional Institution | 35 | 1.83 |
| Grafton Correctional Institution | 34 | 1.77 |
| North Central Correctional Institution | 29 | 1.52 |
| Corrections Medical Center | 28 | 1.46 |
| London Correctional Institution | 22 | 1.15 |
| Mansfield Correctional Institution | 21 | 1.10 |
| Other | 16 | 0.84 |
| Dayton Correctional Institution | 14 | 0.73 |
| North East Ohio Correctional Center | 13 | 0.68 |
| Ohio State Penitentiary | 7 | 0.37 |
| Southeastern Correctional Institution | 7 | 0.37 |
| Oakwood Correctional Facility | 6 | 0.31 |
| Lorain Correctional Institution | 4 | 0.21 |
| Northeast Pre-Release Center | 4 | 0.21 |
| Correctional Reception Center | 3 | 0.16 |
| North Coast Correctional Treatment Facility | 3 | 0.16 |
| Franklin Pre-Release Center | 1 | 0.10 |
| Montgomery Education Pre-Release Center | 0 | 0.00 |
| Total | 1,913 | 100.00 |

| Table 18. Top Seven Reported Concerns to CIIC (Lorain CI) October 1, 2010 through March 31, 2011 | |
|---|---|
| Institutional Assignment | 5 |
| Security Classification | 4 |
| Non-Grievable | 4 |
| Special Management Housing | 2 |
| Inmate Relations | 2 |
| Staff Accountability | 2 |
| Supervision | 2 |

| Table 19. Breakdown of Top Three Reported Concerns (Lorain CI) October 1, 2010 through March 31, 2011 | |
|--|---|
| Institutional Assignment | |
| Transfer | 5 |
| Security Classification | |
| Procedural Issues | 2 |
| Instrument Overdue | 1 |
| Other | 1 |
| Non-Grievable | |
| Other | 4 |

B. INSPECTION CHECKLISTS

Inspector: Jackson

Facility: LORCI
Date: 4-18-11

AREA INSPECTED: HOUSING

HOUSING UNIT: 3A

| | | COMMENTS |
|---|---|------------------------------------|
| 1. Do living areas appear clean? | <input checked="" type="radio"/> YES NO | |
| 2. How many toilets are inoperative? | <i>none</i> | <i>may have (gone) leaks rings</i> |
| 3. How often are toilet facilities sanitized? | <i>daily</i> | <i>5x per week</i> |
| 4. Is soap available in each bathroom? | <input checked="" type="radio"/> YES NO | <i>Purchased from commissary</i> |
| 5. Do shower facilities appear to be clean? | YES <input checked="" type="radio"/> NO | <i>Soap scum grout</i> |
| 6. How often are shower facilities cleaned? | <i>daily</i> | |
| 7. What cleaning materials are used to clean shower facilities? | | <i>Cleaning supplies</i> |
| 8. What is the room temperature? | <i>68-72°</i> | |
| 9. Are cleaning materials kept secure? | <input checked="" type="radio"/> YES NO | |
| 10. Is the CIIC memo posted? | YES <input checked="" type="radio"/> NO | |
| 11. Are the Commissary, programs, and library schedules posted? | <input checked="" type="radio"/> YES NO | |
| 12. Are kites available on the unit? | <input checked="" type="radio"/> YES NO | |
| 13. Are informal complaint forms available on the unit? | <input checked="" type="radio"/> YES NO | |
| 14. How many shakedowns are performed on each shift? | <i>Daily</i> | <i>Random Number stuff</i> |
| 15. Are cell windows clear of obstruction? / Are views of beds in dorms obstructed? | <input checked="" type="radio"/> YES NO | |

Inspector: Jackson

Facility: LORCI
Date: 4-18-11

| | | |
|--|--|----------------------------------|
| 16. Is the atmosphere of the unit calm or disruptive? | <i>talkative</i> | |
| 17. Are officers performing regular security checks? | <input checked="" type="radio"/> YES NO | <i>30 minutes</i> |
| 18. Are laundry facilities operational? | <input checked="" type="radio"/> YES NO | |
| 19. Are lights turned on all night? | YES <input checked="" type="radio"/> NO | <i>Attentional Court Cleared</i> |
| ADDITIONAL COMMENTS (including inmate communication): | | |
| <p><i>* - 9 bunk beds are in the dayroom area</i></p> <p><i>* - Showers are undergoing a capital improvement process</i></p> <p><i>* - 8 showers (4 on upper level, 4 lower level)</i></p> | | |

CIIC Report: Lorain Correctional Institution 51

Inspector: Briester
~~Quinn~~

Facility: LORCE
 Date: 4-18-11

AREA INSPECTED: HOUSING

HOUSING UNIT: 8B

| | | COMMENTS |
|---|--|---|
| 1. Do living areas appear clean? | <input checked="" type="radio"/> YES NO | not that some cells used powder |
| 2. How many toilets are inoperative? | | 2/3 this moment |
| 3. How often are toilet facilities sanitized? | | 3 days/wk |
| 4. Is soap available in each bathroom? | <input checked="" type="radio"/> YES NO | |
| 5. Do shower facilities appear to be clean? | <input checked="" type="radio"/> YES NO | recently refurbished excellent condition |
| 6. How often are shower facilities cleaned? | | daily |
| 7. What cleaning materials are used to clean shower facilities? | | lemon dish detergent and all purpose cleaner |
| 8. What is the room temperature? | | 75° |
| 9. Are cleaning materials kept secure? | <input checked="" type="radio"/> YES NO | |
| 10. Is the CIIC memo posted? | <input checked="" type="radio"/> YES NO | |
| 11. Are the Commissary, programs, and library schedules posted? | <input checked="" type="radio"/> YES NO | |
| 12. Are kites available on the unit? | <input checked="" type="radio"/> YES NO | |
| 13. Are informal complaint forms available on the unit? | <input checked="" type="radio"/> YES NO | in drawer |
| 14. How many shakedowns are performed on each shift? | | 3/shift |
| 15. Are cell windows clear of obstruction? / Are views of beds in dorms obstructed? | <input checked="" type="radio"/> YES NO | |

CIIC Report: Lorain Correctional Institution 52

Inspector: Jackson
30

Facility: LORCE
Date: 4-18-11

| | | |
|--|---|---|
| 16. Is the atmosphere of the unit calm or disruptive? | | Calm |
| 17. Are officers performing regular security checks? | <input checked="" type="radio"/> YES <input type="radio"/> NO | w/in 30 minutes - staggered |
| 18. Are laundry facilities operational? | <input checked="" type="radio"/> YES <input type="radio"/> NO | |
| 19. Are lights turned on all night? | YES <input checked="" type="radio"/> NO | 1st Shift turns on @ 5:30am 2nd shift off @ 9:30/10:00pm |
| <p>ADDITIONAL COMMENTS (including inmate communication):</p> <p>8 SAFE CELLS w/ CLEAR PLASTIC WINDOW</p> <p>- SAFE CELLS CLEAN AND ALL TOILETS/SINKS OPERATIONAL AND ALL CLEAN</p> | | |

Inspector: Jackson

Facility: LORCII
Date: 4-18-11

AREA INSPECTED: HOUSING

HOUSING UNIT: 4A

| | | COMMENTS |
|---|--|--|
| 1. Do living areas appear clean? | <input checked="" type="radio"/> YES NO | |
| 2. How many toilets are inoperative? | <i>none</i> | |
| 3. How often are toilet facilities sanitized? | <i>2x weeks</i> | <i>cell cleaning by inmates</i> |
| 4. Is soap available in each bathroom? | <input checked="" type="radio"/> YES NO | |
| 5. Do shower facilities appear to be clean? | <input checked="" type="radio"/> YES NO | <i>Soap seen but Mostly Clean</i> |
| 6. How often are shower facilities cleaned? | <i>daily</i> | |
| 7. What cleaning materials are used to clean shower facilities? | | <i>Cleaning solution Scrub brush</i> |
| 8. What is the room temperature? | <i>68-72th</i> | |
| 9. Are cleaning materials kept secure? | <input checked="" type="radio"/> YES NO | |
| 10. Is the CIIC memo posted? | YES <input checked="" type="radio"/> NO | |
| 11. Are the Commissary, programs, and library schedules posted? | <input checked="" type="radio"/> YES NO | |
| 12. Are kites available on the unit? | <input checked="" type="radio"/> YES NO | |
| 13. Are informal complaint forms available on the unit? | <input checked="" type="radio"/> YES NO | |
| 14. How many shakedowns are performed on each shift? | <i>daily</i> | <i>3 per Shift</i> |
| 15. Are cell windows clear of obstruction? / Are views of beds in dorms obstructed? | YES NO | |

Inspector: Jackson

Facility: LORCI
Date: 4-18-11

| | | |
|---|--|--------------------------------------|
| 16. Is the atmosphere of the unit calm or disruptive? | <u>Calm</u> | |
| 17. Are officers performing regular security checks? | <input checked="" type="radio"/> YES NO | <u>every 30 min.</u> |
| 18. Are laundry facilities operational? | <input checked="" type="radio"/> YES NO | |
| 19. Are lights turned on all night? | YES <input checked="" type="radio"/> NO | <u>After final count has cleared</u> |
| ADDITIONAL COMMENTS (including inmate communication): | | |
| | | |

CIIC Report: Lorain Correctional Institution 55

Inspector: GTC

Facility: Lorain
Date: 4/18/11

AREA INSPECTED: HOUSING

HOUSING UNIT: 4B

| | | COMMENTS |
|---|---|---|
| 1. Do living areas appear clean? | <input checked="" type="radio"/> YES <input type="radio"/> NO | |
| 2. How many toilets are inoperative? | | ALL ARE WORKING |
| 3. How often are toilet facilities sanitized? | | ON WEEKENDS, BUT AS ② COME OUT THE CELLS ARE ALSO CLEANED |
| 4. Is soap available in each bathroom? | <input checked="" type="radio"/> YES <input type="radio"/> NO | |
| 5. Do shower facilities appear to be clean? | <input checked="" type="radio"/> YES <input type="radio"/> NO | |
| 6. How often are shower facilities cleaned? | | DAILY ON 1st SHIFT |
| 7. What cleaning materials are used to clean shower facilities? | | CHEMICALS ISSUED FROM CENTRAL CHEMICAL |
| 8. What is the room temperature? | | 67-70° |
| 9. Are cleaning materials kept secure? | <input checked="" type="radio"/> YES <input type="radio"/> NO | |
| 10. Is the CIIC memo posted? | <input checked="" type="radio"/> YES <input type="radio"/> NO | |
| 11. Are the Commissary, programs, and library schedules posted? | <input checked="" type="radio"/> YES <input type="radio"/> NO | |
| 12. Are kites available on the unit? | <input checked="" type="radio"/> YES <input type="radio"/> NO | WHEN THEY ARE IN STOCK |
| 13. Are informal complaint forms available on the unit? | <input checked="" type="radio"/> YES <input type="radio"/> NO | ALWAYS HAVE |
| 14. How many shakedowns are performed on each shift? | | 3 |
| 15. Are cell windows clear of obstruction? / Are views of beds in dorms obstructed? | <input checked="" type="radio"/> YES <input type="radio"/> NO | |

Inspector: Jackson

Facility: LORCI
Date: 4-18-11

AREA INSPECTED: HOUSING

HOUSING UNIT: 4C

| | | COMMENTS |
|---|---|--|
| 1. Do living areas appear clean? | <input checked="" type="radio"/> YES NO | |
| 2. How many toilets are inoperative? | None | |
| 3. How often are toilet facilities sanitized? | every day | by Paters / sut + Sun Self-Clean |
| 4. Is soap available in each bathroom? | <input checked="" type="radio"/> YES NO | |
| 5. Do shower facilities appear to be clean? | <input checked="" type="radio"/> YES NO | Capital/Improvement O/K. |
| 6. How often are shower facilities cleaned? | 2x day | |
| 7. What cleaning materials are used to clean shower facilities? | Orange soap + | Orange disinfectant soap, Soap! Scrub brush |
| 8. What is the room temperature? | 68-72° | |
| 9. Are cleaning materials kept secure? | <input checked="" type="radio"/> YES NO | |
| 10. Is the CIIC memo posted? | YES <input checked="" type="radio"/> NO | |
| 11. Are the Commissary, programs, and library schedules posted? | <input checked="" type="radio"/> YES NO | |
| 12. Are kites available on the unit? | <input checked="" type="radio"/> YES NO | |
| 13. Are informal complaint forms available on the unit? | <input checked="" type="radio"/> YES NO | |
| 14. How many shakedowns are performed on each shift? | 6 per day - random | 3 per shift - 1st/2nd |
| 15. Are cell windows clear of obstruction? / Are views of beds in dorms obstructed? | <input checked="" type="radio"/> YES NO | Clear of obstruction |

Inspector: Jackson

Facility: LORCE
Date: 4-18-11

| | | |
|---|--|---------------------------------------|
| 16. Is the atmosphere of the unit calm or disruptive? | <u>Calm</u> | |
| 17. Are officers performing regular security checks? | <input checked="" type="radio"/> YES NO | <u>Every morning check list</u> |
| 18. Are laundry facilities operational? | <input checked="" type="radio"/> YES NO | |
| 19. Are lights turned on all night? | YES <input checked="" type="radio"/> NO | <u>Turned off after 9:30 pm count</u> |
| ADDITIONAL COMMENTS (including inmate communication): | | |
| <p>- Capital improvement for showers in whole facility?</p> <p>- 16 bunk beds in day room (inmates)</p> | | |

Inspector: Furderer

Facility: Lorain CI
Date: 4-18-11

AREA INSPECTED: HOUSING

HOUSING UNIT: 7A

| | | COMMENTS |
|---|---|--|
| 1. Do living areas appear clean? | <input checked="" type="radio"/> YES NO | |
| 2. How many toilets are inoperative? | 0 | |
| 3. How often are toilet facilities sanitized? | - cell clean twice/week | - inmates may clean daily |
| 4. Is soap available in each bathroom? | <input checked="" type="radio"/> YES NO | - may purchase through commissary - Wednesday Com or indigent |
| 5. Do shower facilities appear to be clean? | <input checked="" type="radio"/> YES NO | - Ceilings have issues and need repaired |
| 6. How often are shower facilities cleaned? | daily | |
| 7. What cleaning materials are used to clean shower facilities? | - window cleaner - detergent - general disinfectant | |
| 8. What is the room temperature? | do not keep log on unit | - maintenance keeps log - can spot check if necessary |
| 9. Are cleaning materials kept secure? | <input checked="" type="radio"/> YES NO | |
| 10. Is the CIIC memo posted? | <input checked="" type="radio"/> YES NO | |
| 11. Are the Commissary, programs, and library schedules posted? | <input checked="" type="radio"/> YES NO | |
| 12. Are kites available on the unit? | <input checked="" type="radio"/> YES NO | |
| 13. Are informal complaint forms available on the unit? | <input checked="" type="radio"/> YES NO | |
| 14. How many shakedowns are performed on each shift? | minimum of three | |
| 15. Are cell windows clear of obstruction? / Are views of beds in dorms obstructed? | <input checked="" type="radio"/> YES NO | - bunks in day room floor clear |

Soap passed out

CIIC Report: Lorain Correctional Institution 60

Inspector: Furderer
7A

Facility: LorCI
Date: 4-18-11

| | | |
|---|--|------------------------|
| 16. Is the atmosphere of the unit calm or disruptive? | <u>Calm</u> | |
| 17. Are officers performing regular security checks? | <input checked="" type="radio"/> YES NO | |
| 18. Are laundry facilities operational? | <input checked="" type="radio"/> YES NO | |
| 19. Are lights turned on all night? | YES <input checked="" type="radio"/> NO | <u>dimmed at night</u> |
| ADDITIONAL COMMENTS (including inmate communication): | | |
| | | |

Inspector: Hooks

Facility: LORCI
Date: 4/18/11

AREA INSPECTED: HOUSING

HOUSING UNIT: 7B

| | | COMMENTS |
|---|---|--|
| 1. Do living areas appear clean? | <input checked="" type="radio"/> YES <input type="radio"/> NO | |
| 2. How many toilets are inoperative? | zero | |
| 3. How often are toilet facilities sanitized? | 1x per week | or by choice - during inside rec |
| 4. Is soap available in each bathroom? | YES <input checked="" type="radio"/> NO | -only indigent |
| 5. Do shower facilities appear to be clean? | <input checked="" type="radio"/> YES <input type="radio"/> NO | but mil dead/soap seem - some broken curtains |
| 6. How often are shower facilities cleaned? | Daily | |
| 7. What cleaning materials are used to clean shower facilities? | - disinfect / orange powder | |
| 8. What is the room temperature? | - checked regularly | |
| 9. Are cleaning materials kept secure? | <input checked="" type="radio"/> YES <input type="radio"/> NO | in janitor closet |
| 10. Is the CIIC memo posted? | <input checked="" type="radio"/> YES <input type="radio"/> NO | |
| 11. Are the Commissary, programs, and library schedules posted? | <input checked="" type="radio"/> YES <input type="radio"/> NO | |
| 12. Are kites available on the unit? | <input checked="" type="radio"/> YES <input type="radio"/> NO | |
| 13. Are informal complaint forms available on the unit? | <input checked="" type="radio"/> YES <input type="radio"/> NO | |
| 14. How many shakedowns are performed on each shift? | 3 per shift | -all areas |
| 15. Are cell windows clear of obstruction? / Are views of beds in dorms obstructed? | <input checked="" type="radio"/> YES <input type="radio"/> NO | NO |

CIIC Report: Lorain Correctional Institution 62

Inspector: Hooks

7B

Facility: LorCI
Date: 4-18-11

| | | |
|---|--|---|
| 16. Is the atmosphere of the unit calm or disruptive? | Calm | |
| 17. Are officers performing regular security checks? | <input checked="" type="radio"/> YES NO | every 30 |
| 18. Are laundry facilities operational? | <input checked="" type="radio"/> YES NO | |
| 19. Are lights turned on all night? | <input checked="" type="radio"/> YES NO | - main ones off at these night |
| <p>ADDITIONAL COMMENTS (including inmate communication):</p> <ul style="list-style-type: none"> - 3 common bathrooms (fairly clean) - paint issues / ? ceiling - tower showers have major ceiling issues - cell 120 closed and appeared very dirty inside <ul style="list-style-type: none"> - inmates alleged it was black mold | | |

Inspector: Furderer

Facility: Lorain CI
Date: 4-18-11

AREA INSPECTED: HOUSING

HOUSING UNIT: 8A

| | | COMMENTS |
|---|---|--|
| 1. Do living areas appear clean? | <input checked="" type="radio"/> YES <input type="radio"/> NO | |
| 2. How many toilets are inoperative? | 0 | - 121 shut down for unknown reason |
| 3. How often are toilet facilities sanitized? | cell clean twice per week | - inmates may clean daily |
| 4. Is soap available in each bathroom? | <input checked="" type="radio"/> YES <input type="radio"/> NO | |
| 5. Do shower facilities appear to be clean? | <input checked="" type="radio"/> YES <input type="radio"/> NO | - ceilings need fixed |
| 6. How often are shower facilities cleaned? | daily | |
| 7. What cleaning materials are used to clean shower facilities? | - window cleaner - detergent - general disinfectant | - maintenance keeps log - can spot check if necessary |
| 8. What is the room temperature? | do not keep logs on unit | |
| 9. Are cleaning materials kept secure? | <input checked="" type="radio"/> YES <input type="radio"/> NO | |
| 10. Is the CIIC memo posted? | YES <input checked="" type="radio"/> NO | mentioned to staff |
| 11. Are the Commissary, programs, and library schedules posted? | <input checked="" type="radio"/> YES <input type="radio"/> NO | |
| 12. Are kites available on the unit? | <input checked="" type="radio"/> YES <input type="radio"/> NO | |
| 13. Are informal complaint forms available on the unit? | <input checked="" type="radio"/> YES <input type="radio"/> NO | |
| 14. How many shakedowns are performed on each shift? | three per shift | |
| 15. Are cell windows clear of obstruction? / Are views of beds in dorms obstructed? | <input checked="" type="radio"/> YES <input type="radio"/> NO | |

Inspector: Furderer

Facility: LorCI
Date: 4-18-11

8A

| | | |
|---|--|--|
| 16. Is the atmosphere of the unit calm or disruptive? | <u>Calm</u> | |
| 17. Are officers performing regular security checks? | <input checked="" type="radio"/> YES NO | |
| 18. Are laundry facilities operational? | <input checked="" type="radio"/> YES NO | |
| 19. Are lights turned on all night? | YES <input checked="" type="radio"/> NO | |
| ADDITIONAL COMMENTS (including inmate communication): | | |
| | | |

CIIC Report: Lorain Correctional Institution 65

Inspector: Hodges

Facility: LORCI
Date: 4/19

AREA INSPECTED: HOUSING

HOUSING UNIT: BB

| | | COMMENTS |
|---|---|---|
| 1. Do living areas appear clean? | <input checked="" type="radio"/> YES NO | |
| 2. How many toilets are inoperative? | Zero | - lots of toilets leaking - all working |
| 3. How often are toilet facilities sanitized? | X times per week | |
| 4. Is soap available in each bathroom? | YES <input checked="" type="radio"/> NO | only 16 indigent |
| 5. Do shower facilities appear to be clean? | <input checked="" type="radio"/> YES NO | - all in use - one missing nozzle/ - one cold |
| 6. How often are shower facilities cleaned? | Daily ^{at one} | - some soap srum |
| 7. What cleaning materials are used to clean shower facilities? | - general disinfectant - powder cleanser | |
| 8. What is the room temperature? | Comfortable | |
| 9. Are cleaning materials kept secure? | <input checked="" type="radio"/> YES NO | lock box |
| 10. Is the CIIC memo posted? | YES <input checked="" type="radio"/> NO | |
| 11. Are the Commissary, programs, and library schedules posted? | <input checked="" type="radio"/> YES NO | *dry erase board also |
| 12. Are kites available on the unit? | <input checked="" type="radio"/> YES NO | |
| 13. Are informal complaint forms available on the unit? | <input checked="" type="radio"/> YES NO | |
| 14. How many shakedowns are performed on each shift? | 3 ^{at least} | |
| 15. Are cell windows clear of obstruction? / Are views of beds in dorms obstructed? | <input checked="" type="radio"/> YES NO | NO |

CIIC Report: Lorain Correctional Institution 66

Inspector: Hooks

8B

Facility: Lorain
Date: 4/12/11

| | | |
|---|--|-----------------------|
| 16. Is the atmosphere of the unit calm or disruptive? | Calm | |
| 17. Are officers performing regular security checks? | <input checked="" type="radio"/> YES NO | every 30 staggered |
| 18. Are laundry facilities operational? | <input checked="" type="radio"/> YES NO | 3 of each |
| 19. Are lights turned on all night? | <input checked="" type="radio"/> YES NO | only some reach |
| ADDITIONAL COMMENTS (including inmate communication): | | |
| <p>-inmate communication -CO in this unit is very disrespectful</p> | | |

CIIC Report: Lorain Correctional Institution 67

Inspector: HOOKS

Facility: LORCI
Date: 4/18/11

AREA INSPECTED: HOUSING

HOUSING UNIT: 9A

| | | COMMENTS |
|---|---|-------------------------------------|
| 1. Do living areas appear clean? | <input checked="" type="radio"/> YES <input type="radio"/> NO | Cleaned 2x per week + upon request |
| 2. How many toilets are inoperative? | Zero | |
| 3. How often are toilet facilities sanitized? | 2x per week | - by request |
| 4. Is soap available in each bathroom? | YES <input checked="" type="radio"/> NO | - only indigent |
| 5. Do shower facilities appear to be clean? | <input checked="" type="radio"/> YES <input type="radio"/> NO | lots of ceiling issues (wood/decay) |
| 6. How often are shower facilities cleaned? | 2x per week | |
| 7. What cleaning materials are used to clean shower facilities? | general disinfect. | |
| 8. What is the room temperature? | checked regl. | |
| 9. Are cleaning materials kept secure? | <input checked="" type="radio"/> YES <input type="radio"/> NO | lock box |
| 10. Is the CIIC memo posted? | YES <input checked="" type="radio"/> NO | |
| 11. Are the Commissary, programs, and library schedules posted? | <input checked="" type="radio"/> YES <input type="radio"/> NO | |
| 12. Are kites available on the unit? | <input checked="" type="radio"/> YES <input type="radio"/> NO | |
| 13. Are informal complaint forms available on the unit? | <input checked="" type="radio"/> YES <input type="radio"/> NO | |
| 14. How many shakedowns are performed on each shift? | 3rd shift -- 1 1/2nd -- 3 | |
| 15. Are cell windows clear of obstruction? / Are views of beds in dorms obstructed? | <input checked="" type="radio"/> YES <input type="radio"/> NO | - take down when upon request |

Inspector: Hooks
9A

Facility: _____
 Date: _____

| | | | |
|---|--------------------------------------|--------------------------|-------------------------------|
| 16. Is the atmosphere of the unit calm or disruptive? | Calm | | |
| 17. Are officers performing regular security checks? | <input checked="" type="radio"/> YES | <input type="radio"/> NO | |
| 18. Are laundry facilities operational? | <input checked="" type="radio"/> YES | <input type="radio"/> NO | 3 wash/3 dryers |
| 19. Are lights turned on all night? | <input checked="" type="radio"/> YES | <input type="radio"/> NO | -main lights off -range on |
| <p>ADDITIONAL COMMENTS (including inmate communication):</p> <ul style="list-style-type: none"> - 2 showers cold (inmate comm.) - inmates relayed concerns that they do not get afternoon inside recreation and have to make phone calls in the morning <ul style="list-style-type: none"> - staff showed schedule indicating they do receive inside rec. privileges - inmates stated concerns with only being able to wash clothes once per week | | | |

Inspector: Furderer

Facility: LORCI
Date: 4-18-11

AREA INSPECTED: HOUSING

HOUSING UNIT: 9B

| | | COMMENTS |
|---|--|---|
| 1. Do living areas appear clean? | <input checked="" type="radio"/> YES NO | |
| 2. How many toilets are inoperative? | 0 | |
| 3. How often are toilet facilities sanitized? | | -inmates can clean daily |
| 4. Is soap available in each bathroom? | <input checked="" type="radio"/> YES NO | |
| 5. Do shower facilities appear to be clean? | <input checked="" type="radio"/> YES NO | -ceiling issues -tiles chipped -runner soap stain |
| 6. How often are shower facilities cleaned? | three times per week | mon, wed, Fri |
| 7. What cleaning materials are used to clean shower facilities? | -window cleaner -detergent -general disinfectant | |
| 8. What is the room temperature? | do not keep log on unit | -maintenance keeps log -can spot check if necessary |
| 9. Are cleaning materials kept secure? | <input checked="" type="radio"/> YES NO | |
| 10. Is the CIIC memo posted? | <input checked="" type="radio"/> YES NO | |
| 11. Are the Commissary, programs, and library schedules posted? | <input checked="" type="radio"/> YES NO | |
| 12. Are kites available on the unit? | <input checked="" type="radio"/> YES NO | |
| 13. Are informal complaint forms available on the unit? | <input checked="" type="radio"/> YES NO | |
| 14. How many shakedowns are performed on each shift? | at least three | |
| 15. Are cell windows clear of obstruction? / Are views of beds in dorms obstructed? | <input checked="" type="radio"/> YES NO | |

CIIC Report: Lorain Correctional Institution 70

Inspector: Furderer

Facility: Lor CI
Date: 4-18-11

9B

| | | |
|--|---|--|
| 16. Is the atmosphere of the unit calm or disruptive? | Calm | |
| 17. Are officers performing regular security checks? | <input checked="" type="radio"/> YES <input type="radio"/> NO | |
| 18. Are laundry facilities operational? | <input checked="" type="radio"/> YES <input type="radio"/> NO | |
| 19. Are lights turned on all night? | YES <input checked="" type="radio"/> NO | |
| <p>ADDITIONAL COMMENTS (including inmate communication):</p> <ul style="list-style-type: none"> - inmate Communication - found piece of glass in food - it is taking a long time to transfer inmates out to parent institution | | |

CIIC Report: Lorain Correctional Institution 71

Inspector: HOOKS

Facility: LORAIN
Date: 4/18/11

AREA INSPECTED: HOUSING

HOUSING UNIT: 10A STO

| | | COMMENTS |
|---|--|---|
| 1. Do living areas appear clean? | <input checked="" type="radio"/> YES NO | |
| 2. How many toilets are inoperative? | Zero | |
| 3. How often are toilet facilities sanitized? | upon req. at anytime | |
| 4. Is soap available in each bathroom? | YES <input checked="" type="radio"/> NO | only Indigent |
| 5. Do shower facilities appear to be clean? | <input checked="" type="radio"/> YES NO | Some soap scum - ceiling issues |
| 6. How often are shower facilities cleaned? | daily | - 3 of showers cold (upstairs - impact) |
| 7. What cleaning materials are used to clean shower facilities? | generally disinf. | *bottom tiles all broken on top range - mold on floor |
| 8. What is the room temperature? | check w/ scanner daily (in winter, at least) | |
| 9. Are cleaning materials kept secure? | <input checked="" type="radio"/> YES NO | ID bank system |
| 10. Is the CIIC memo posted? | <input checked="" type="radio"/> YES NO | |
| 11. Are the Commissary, programs, and library schedules posted? | <input checked="" type="radio"/> YES NO | |
| 12. Are kites available on the unit? | <input checked="" type="radio"/> YES NO | |
| 13. Are informal complaint forms available on the unit? | <input checked="" type="radio"/> YES NO | |
| 14. How many shakedowns are performed on each shift? | 3 per shift | |
| 15. Are cell windows clear of obstruction? / Are views of beds in dorms obstructed? | <input checked="" type="radio"/> YES NO | -ongoing issue |

Inspector: HOOKS

Facility: LORCI
Date: _____

10A STD

| | | |
|---|--|-----------------------------|
| 16. Is the atmosphere of the unit calm or disruptive? | Calm | but not quiet |
| 17. Are officers performing regular security checks? | <input checked="" type="radio"/> YES NO | every 30 mins |
| 18. Are laundry facilities operational? | <input checked="" type="radio"/> YES NO | 3 of each |
| 19. Are lights turned on all night? | <input checked="" type="radio"/> YES NO | range lights, but cells off |

ADDITIONAL COMMENTS (including inmate communication):

- 2 microwaves
- more liberties in STD
 - tables for games
 - tv
 - more phone privs
 - access to showers
- rare incidents in this pod
- toilets leaking issues

Inspector: Furderer

Facility: Lorain
Date: 4-18-11

AREA INSPECTED: HOUSING

HOUSING UNIT: 10 B (cadre)

| | | COMMENTS |
|---|---|---|
| 1. Do living areas appear clean? | <input checked="" type="radio"/> YES NO | |
| 2. How many toilets are inoperative? | 0 | |
| 3. How often are toilet facilities sanitized? | | - inmates can clean daily |
| 4. Is soap available in each bathroom? | <input checked="" type="radio"/> YES NO | |
| 5. Do shower facilities appear to be clean? | <input checked="" type="radio"/> YES NO | |
| 6. How often are shower facilities cleaned? | daily | |
| 7. What cleaning materials are used to clean shower facilities? | - window cleaner - detergent - general disinfectant | |
| 8. What is the room temperature? | do not keep log on unit | - maintenance keeps log - can spot check if necessary |
| 9. Are cleaning materials kept secure? | <input checked="" type="radio"/> YES NO | |
| 10. Is the CIIC memo posted? | <input checked="" type="radio"/> YES NO | |
| 11. Are the Commissary, programs, and library schedules posted? | <input checked="" type="radio"/> YES NO | |
| 12. Are kites available on the unit? | <input checked="" type="radio"/> YES NO | |
| 13. Are informal complaint forms available on the unit? | <input checked="" type="radio"/> YES NO | |
| 14. How many shakedowns are performed on each shift? | three | |
| 15. Are cell windows clear of obstruction? / Are views of beds in dorms obstructed? | <input checked="" type="radio"/> YES NO | |

CIIC Report: Lorain Correctional Institution 74

Inspector: Furderer

Facility: LorCI
Date: 4-18-11

10 B

| | | |
|--|--|--|
| 16. Is the atmosphere of the unit calm or disruptive? | Calm | |
| 17. Are officers performing regular security checks? | <input checked="" type="radio"/> YES NO | |
| 18. Are laundry facilities operational? | <input checked="" type="radio"/> YES NO | |
| 19. Are lights turned on all night? | YES <input checked="" type="radio"/> NO | |
| <p>ADDITIONAL COMMENTS (including inmate communication):</p> <ul style="list-style-type: none"> - cadre unit - Dog Program - now level two for cadre | | |

Inspector: BTG

Facility: LORAIN
Date: 4/18/11

AREA INSPECTED: SEGREGATION

4 cos/shrft

| | | COMMENTS |
|---|---|--|
| 1. Inmate Count 36 | SC - DC - LC - | 36 total → couldn't provide a breakdown |
| 2. Do cells appear clean? | YES <input checked="" type="radio"/> NO | cells look dirty, paint chipped |
| 3. How many toilets are inoperative? | | 2 cells out of service - work orders are placed |
| 4. How often are toilet facilities sanitized? | | cleaned as vacated cleaned on Saturdays |
| 5. Do shower facilities appear to be clean? | YES NO | |
| 6. How often are shower facilities cleaned? | | cleaned as released or on Saturdays - as needed at times |
| 7. What is the room temperature? | | |
| 8. Are officers conducting security checks every 30 minutes? | <input checked="" type="radio"/> YES NO | Random w/in last 30 minutes |
| 9. Are individual log sheets maintained and up to date? • Meals • Recreation in/out • Linen/towel exchange • Razor issue • Cell cleaning | <input checked="" type="radio"/> YES NO | |
| 10. How often are medical rounds conducted? | | Daily on 1st/2nd for pill call |
| 11. How often are mental health rounds conducted? | | Daily on 1st |
| 12. Are kites available on the unit? | <input checked="" type="radio"/> YES NO | |
| 13. Are informal complaint forms available on the unit? | <input checked="" type="radio"/> YES NO | |
| 14. Do inmates have access to library and legal services? | <input checked="" type="radio"/> YES NO | have law library or can request to see A.P.s during rec upon request |

CIIC Report: Lorain Correctional Institution 76

Inspector: GTG

Facility: Lorain
Date: 4/18/11

2

| | | |
|--|--|---|
| 15. Are cell windows clear of obstruction? | <input checked="" type="radio"/> YES NO | |
| 16. Is the atmosphere of the unit calm or disruptive? | | YES AT FIRST, ONE (D) BANGING ON DOOR |
| 17. Are inmates provided with the required cell furnishings, clothing, toilet paper, soap, etc? | YES NO | |
| 18. Do religious services personnel have access to inmates in segregation? | <input checked="" type="radio"/> YES NO | upon request or special incidents, periodic |
| ADDITIONAL COMMENTS (including inmate communication and breakdown of inmates): | | |
| <p>4 on 1st - } COS 3 on 2nd } 4 cant run sig adequately due to volume of work</p> | | |
| <p>have CELLS ARE PAINT CHIPPED, DIRTY, CELLS BOWLS RUSTY INMATES DON'T LIKE THE FOOD</p> | | |

Inspector: GTH

Facility: LORC
Date: 4/18/11

INFIRMARY:

| | | | | |
|----|---|--------------------------------------|-------------------------------------|--|
| 1 | Does the overall appearance of the infirmary look clean? (exam rooms, holding cells, crisis cells) | <input checked="" type="radio"/> YES | <input type="radio"/> NO | SOME CELLS NEEDED THE WALLS PAINTED AND FLOOR SCRUBBED OVERALL, OK. |
| 1a | Ask to see documentation of cleaning schedule for all functional areas. | | | A SCHEDULE IS KEPT, BUT THERE IS NO DOCUMENTATION TO VERIFY TASKS HAVE BEEN COMPLETED BY PORTERS |
| 1b | Document the number of exam rooms, holding cells and crisis cells. | | | 10 BEDS 2 ISOLATION <u> 1 </u> <u> 1 </u> CRISIS CELLS IN MH UNIT |
| 1c | Staff uses personal protective equipment (gloves, masks, etc) to control risks for acquiring and transmitting infections. 68-MED-18 (Observe staff if possible) | <input checked="" type="radio"/> YES | <input type="radio"/> NO | PER HCA, WAS UNABLE TO OBSERVE PROVIDER/PT INTERACTION |
| 1d | Clearly marked sharps containers and other bio-medical waste containers are present in all exam rooms (68-MED-18, 10-SAF-13). (Look in all exam rooms. If possible, observe where waste is stored prior to disposal.) | <input checked="" type="radio"/> YES | <input type="radio"/> NO | |
| 1e | Inmate porters are trained to use personal protective equipment to clean up and dispose of infectious waste. (10-SAF-13) | <input checked="" type="radio"/> YES | <input type="radio"/> NO | |
| 2 | All medical and dental equipment is operational? (Are there any broken pieces?) | <input type="radio"/> YES | <input checked="" type="radio"/> NO | ERC MACHINE STILL WORKS, BUT MUST HOLD IT A CERTAIN WAY TO MAKE IT WORK |
| 2a | Work areas of the infirmary appear organized? (Observe for cluttered exam rooms etc.) | <input checked="" type="radio"/> YES | <input type="radio"/> NO | HOWEVER, SPACE INSUFFICIENT FOR SIZE OF POPULATION |
| 3 | Medical records are kept in a secure location and handled to ensure confidentiality. (Observe for records that are kept in open areas that could be picked up by anyone). | <input checked="" type="radio"/> YES | <input type="radio"/> NO | SOME RECORDS OBSERVED OUT IN THE OPEN W/ NO STAFF MEMBER PRESENT WHILE INMATES SAT ON BENCH NEARBY. STAFF REPORTED THIS STATION IS THERE TO KEEP THE FLOW OF INMATES MOVING. |
| 3a | Does each inmate have individual medical record and health risk assessment completed? (If not what is the timeline to complete this? How many have not been completed?) | <input checked="" type="radio"/> YES | <input type="radio"/> NO | |

Inspector: GTC

Facility: LORCI
Date: 4/18/11

| | | | |
|----|---|---|--|
| 3b | How frequently are patient records audited for accuracy and errors or missing data? (Ask to see the log of records audits) | <input checked="" type="radio"/> YES <input type="radio"/> NO | CIIC PERFORMS AUDITS OF FIVE INDICATORS WEEKLY MINIMUM. CIIC NURSE SHOWED AUDIT OF INDICATOR, EXPLAINED PROCESS OF PLAN OF CORRECTIVE ACTION WHEN ERRORS ID'D |
| 3c | How frequently is staff training conducted related to patterns of errors identified by records audits? (What is the process?) | | AS ID, THEN ACTION PLAN Laid OUT AND MONITORED FOR 30-60-90 DAYS. IF NOT SOLVED IN 90 DAYS, NEW PLAN TO CORRECT IT DEVELOPED. |
| 3d | Targets for improving patient care are set for staff to achieve? | <input checked="" type="radio"/> YES <input type="radio"/> NO | |
| 3e | How often is staff training conducted on new protocols and procedures relevant to improving patient care? | | MONTHLY - RN'S TESTED |
| 4 | Health Care supervisors work late shifts periodically to monitor infirmary operations. (How often) | <input checked="" type="radio"/> YES <input type="radio"/> NO | RN2 GOES TO SECOND SHIFT A/C WORKS LATE - DEPENDS |
| 4a | What is the average amount of overtime of nursing staff per month? | | ROXIMATELY 450 HRS/MO TOTAL - IF RN RETIRES, HOURS MUST GO TO 1199 FOR 2 WKS, THEN CAN USE AGENCY RN |
| 4b | What steps are taken to address staff burnout? (Peer support groups, counseling, etc.) | | NOT TOO MUCH YOU CAN DO TO ADDRESS IT. SOMETIMES PEOPLE GET FORCED TO WORK OVERTIME. FEEDING, NURSES IS A GOOD WAY. PIC RECEPTION CTR DOES NEEDS TO DO MORE TO STOP TURNOVER |
| 4c | What is the annual average turnover of nurses and other medical staff at the institution? | | 3-4 RN'S A YEAR AVERAGE. TRY TO FILL POSITION ONCE COMES OPEN TAKES 3-4 MONTHS TO FILL VACANCY. |
| 5 | How many inmates are enrolled in chronic care clinics at the institution? (68-MED-19) | | OVER 400 |
| 5a | What is the backlog of inmates enrolled in chronic care clinics? (Ask why there is a backlog) | | APPROX 9% OF 400 (36) ONE OR TWO WEEKS BEHIND HAVE 4 WEEKS TO ADDRESS CCI ONCE ID |
| 5b | What is the plan to address any backlog? | | HAVE NEW PHYSICAL SYSTEM TO EXPEDITE NEW CCI'S |
| 5c | How many referrals to outside medical providers is pending approval? (Ask what the average amount of time it takes for approval.) | | 12 APPROVED 7 TO BE REVIEWED FOR APPROVAL THIS WEEK |
| 6 | Information is provided to inmates on how and when to seek health care services during orientation? (68-MED-01) | <input checked="" type="radio"/> YES <input type="radio"/> NO | ALL INMATES RECEIVE HAND BOOK, SIGN TO ACKNOWLEDGE RELIANT THAT DESCRIBES PROCESS. |

Inspector: GTG

Facility: LORAIN

Date: 7/18/11

| | | | | |
|----|--|--------------------------------------|----|---|
| 6a | An ongoing teaching program to promote health and hygiene practices is provided to inmates by staff? (If not, why not?) (68-MED-01) | <input checked="" type="radio"/> YES | NO | HEALTH FAIR - ANNUAL RECEPTION INSTITUTION w/ TURN OVER OF INMATES MAKE CONTINUITY OF PT EDUCATION DIFFICULT. |
| 6b | Health education literature is available for inmates to review regarding health related matters in the infirmary and the library? | <input checked="" type="radio"/> YES | NO | PROVIDED AT HEALTH FAIR |
| 6c | Inmates with special needs, infectious diseases, and other health needs are provided counseling and education as needed? (Type?) | <input checked="" type="radio"/> YES | NO | ONE ON ONE WITH PROVIDER |
| 7 | There is an emergency management plan in place to deal with either emergencies or disasters to address larger than normal amounts of inmate/staff injuries? (Individual medical emergency, tornado, fire, or mass disturbances.) | <input checked="" type="radio"/> YES | NO | |
| 7a | How often is medical staff trained on the emergency management plan: | | | YEARLY |

1 HCA 10 RN-1 1 RN-2 4 CPN 5 HIT 1 X-RAY TECHNICIAN
 2 PHLEBOTOMIST 1 QIC 1 ASST HCA 2 PHYSICIANS 2 NP 1 PA.
 3 DENTISTS (2.5) 1 DENT ASST 1 DENT HYG 2 RN VACANCIES

- APPROVED FOR EXPANSION OF INFIRMARY D/T TOO SMALL OF A SPACE FOR A RECEPTION CTR INFIRMARY. JUNE 2011 BREAK GROUND - DONE IN ABOUT 8 MONTHS

PAKELY HAVE SICK CALL BACKLOG.

TRYING

Inspector: Robison

Facility: Lorain CI
Date: 4/18/11

PROGRAM NAME: Language Arts (Drama) - Topic Sentences

| | | COMMENTS |
|--|---|---|
| 1. Are programs available to all inmates? | <input checked="" type="radio"/> YES <input type="radio"/> NO | |
| 2. How many students are in the observed class? | 6 | |
| 3. What is the student/teacher ratio? | 6:1 | |
| 4. Are instructional materials provided to every student? | <input checked="" type="radio"/> YES <input type="radio"/> NO | |
| 5. Are instructional materials copyrighted or teacher-made? | | <u>Stick Vaughn</u> |
| 6. Do students have use of technology as part of the observed program? | YES <input checked="" type="radio"/> NO | <u>* some applications may be completed using PC in lab</u> |
| 7. Was the teacher using technology during the observed program? | YES <input checked="" type="radio"/> NO | <u>PC in lab</u> |
| 8. Was the technology functioning correctly? | YES <input type="radio"/> NO | <u>NA</u> |
| 9. Was the classroom appropriate in size, safety, acoustics, and lighting? | <input checked="" type="radio"/> YES <input type="radio"/> NO | |
| 10. Is security staff on duty during programming? | YES <input checked="" type="radio"/> NO | |
| 11. Is the teacher using a lecture style of instruction, question/answer, or group discussion? | | <u>inst. did nearly ALL the talking</u> |
| 12. Do students appear to be responsive and engaged in the lesson? | YES <input checked="" type="radio"/> NO | <u>inmates just listened - did not</u> |
| ADDITIONAL COMMENTS: | | |
| <p><u>Engaged in some context discussion of one inmate - tapped prior knowledge. Teacher read from worksheet. Think-aloud steps.</u></p> <p><u>voice much to the discussion.</u></p> | | |

Inspector: Robison

Facility: Lorain CI

Date: 4/18/11

PROGRAM NAME: GED - math

| | | COMMENTS |
|--|--|--|
| 1. Are programs available to all inmates? | <input checked="" type="radio"/> YES NO | |
| 2. How many students are in the observed class? | 6 | |
| 3. What is the student/teacher ratio? | 6/1 | |
| 4. Are instructional materials provided to every student? | <input checked="" type="radio"/> YES NO | |
| 5. Are instructional materials copyrighted or teacher-made? | Steck-Vaughn GED Math and LA/Writing | |
| 6. Do students have use of technology as part of the observed program? | YES <input checked="" type="radio"/> NO | one pc in classroom, not use in class. |
| 7. Was the teacher using technology during the observed program? | YES <input checked="" type="radio"/> NO | |
| 8. Was the technology functioning correctly? | YES NO | NA |
| 9. Was the classroom appropriate in size, safety, acoustics, and lighting? | <input checked="" type="radio"/> YES NO | |
| 10. Is security staff on duty during programming? | YES <input checked="" type="radio"/> NO | NA |
| 11. Is the teacher using a lecture style of instruction, question/answer, or group discussion? | | |
| 12. Do students appear to be responsive and engaged in the lesson? | YES <input checked="" type="radio"/> NO | most IMS just listened and were non responsive |
| ADDITIONAL COMMENTS: | | |

Inspector: Robison

Facility: Lo CI
Date: 4/18/11

PROGRAM NAME: Computer class - 5 wk, intro class
3 days/week

| | | COMMENTS |
|--|---|--|
| 1. Are programs available to all inmates? | <input checked="" type="radio"/> YES NO | |
| 2. How many students are in the observed class? | 3 | |
| 3. What is the student/teacher ratio? | 3/1 | was larger when full class was there 15/1 max |
| 4. Are instructional materials provided to every student? | <input checked="" type="radio"/> YES NO | |
| 5. Are instructional materials copyrighted or teacher-made? | | MS Word Excel PowerPoint typing tutor |
| 6. Do students have use of technology as part of the observed program? | <input checked="" type="radio"/> YES NO | |
| 7. Was the teacher using technology during the observed program? | <input checked="" type="radio"/> YES NO | |
| 8. Was the technology functioning correctly? | <input checked="" type="radio"/> YES NO | |
| 9. Was the classroom appropriate in size, safety, acoustics, and lighting? | <input checked="" type="radio"/> YES NO | |
| 10. Is security staff on duty during programming? | YES NO | NA |
| 11. Is the teacher using a lecture style of instruction, question/answer, or group discussion? | | facilitator = modeling = scaffolding |
| 12. Do students appear to be responsive and engaged in the lesson? | <input checked="" type="radio"/> YES NO | |
| ADDITIONAL COMMENTS: | | |
| <p>19 PCs 15-16 work no print text book all on a DVD loaded on each PC.</p> | | |

Inspector: Robison

Facility: Lorain
Date: 4/18/11

PROGRAM NAME: NA/AA

| | | COMMENTS |
|--|---|---------------------------------------|
| 1. Are programs available to all inmates? | <input checked="" type="radio"/> YES <input type="radio"/> NO | |
| 2. How many students are in the observed class? | 14 | |
| 3. What is the student/teacher ratio? | 2 minutes facilitating / 12 inmates group | |
| 4. Are instructional materials provided to every student? | <input checked="" type="radio"/> YES <input type="radio"/> NO | |
| 5. Are instructional materials copyrighted or teacher-made? | from NA/AA materials | |
| 6. Do students have use of technology as part of the observed program? | YES <input checked="" type="radio"/> NO | |
| 7. Was the teacher using technology during the observed program? | YES <input checked="" type="radio"/> NO | |
| 8. Was the technology functioning correctly? | YES <input type="radio"/> NO | NA |
| 9. Was the classroom appropriate in size, safety, acoustics, and lighting? | <input checked="" type="radio"/> YES <input type="radio"/> NO | |
| 10. Is security staff on duty during programming? | YES <input type="radio"/> NO | regular staff - not security officers |
| 11. Is the teacher using a lecture style of instruction, question/answer, or group discussion? | inmates read from NA/AA readings | |
| 12. Do students appear to be responsive and engaged in the lesson? | <input checked="" type="radio"/> YES <input type="radio"/> NO | |

ADDITIONAL COMMENTS:

partway through session, additional 1ms entered -
 3 " " "
 inmate acknowledged he got addicted to money in addition to drugs. He made excuses for his actions.
 1m listening: Heard about 10 programs + thinking program -
 - noted he had allowed himself to slide when he knew he should stand firm.

Inspector: Hooks

Facility: LORCI
Date: 9/18/11

AREA INSPECTED: LIBRARY/LAW LIBRARY

| | | COMMENTS |
|--|---|---|
| 1. Does the area appear to be clean and well-maintained? | <input checked="" type="radio"/> YES <input type="radio"/> NO | |
| 2. Are DRC Administrative Rules (5120-9 series) available to inmates upon request? | <input checked="" type="radio"/> YES <input type="radio"/> NO | - liberal - make copies |
| 3. How many computers/typewriters are available for inmates' use? | 4 typewriters 3 for legal needs 7 circuit / library needs | |
| 4. How often are computers/typewriters cleaned? | As needed for maint. | |
| 5. Are library services available daily, including weekends and evenings? | <input checked="" type="radio"/> YES <input type="radio"/> NO | |
| 6. Does the library participate in inter-library loan programs? | <input checked="" type="radio"/> YES <input type="radio"/> NO | w/ Erie Public Library (14-15 other libraries also involved) → limited to cadre. |
| 7. How many inmate workers are assigned to the library/law library? | 4-5 | |
| 8. Are inmates housed in special management areas permitted to use the law library? How? | <input checked="" type="radio"/> YES <input type="radio"/> NO | Upon request by kite - ARs etc. available inside |
| 9. Is a kite log maintained? | <input checked="" type="radio"/> YES <input type="radio"/> NO | |
| 10. Are there separate sections for African-American/Hispanic/ethnic literature? | YES / <input type="radio"/> NO | - have them, but blended (mostly donated books) |
| 11. Are forms on hand to allow inmates to file court actions? | <input checked="" type="radio"/> YES <input type="radio"/> NO | - all forms available Especially since reception |
| 12. How often are new materials added to the library? | X times per month | - mostly from public (donations) libraries |
| ADDITIONAL COMMENTS (including library/law library schedule): | | |
| Sched. | 8-11 | 12-3 |
| M | 7A | 7B |
| T | 4A | 3B |
| W | 8A | 8B |
| Th | 5A | 10A |
| Fr | 9A | 9B |
| Sat | Discret. | CADRE |
| Sun | Closed | Closed |
| | | 5-7:15 |
| | | Closed |
| | | CADRE |
| | | Closed |
| | | CADRE |
| | | CL |
| | | CL |
| | | CL |

Inspector: Jackson

Facility: LORCI
Date: 7-18-11

AREA INSPECTED: FOOD SERVICES

| | | | COMMENTS |
|---|--------------------------------------|-------------------------------------|--|
| 1. Does the area appear clean? | <input checked="" type="radio"/> YES | <input type="radio"/> NO | |
| 2. Does the equipment appear to be clean? | <input checked="" type="radio"/> YES | <input type="radio"/> NO | Most of the equipment was being used to make the next meal |
| 3. Are there any standing puddles of water on the ground? Is there ice on the floor of coolers? | <input checked="" type="radio"/> YES | <input type="radio"/> NO | only near the wash machine area |
| 4. Is a chit system used to issue tools to inmate workers? | <input checked="" type="radio"/> YES | <input type="radio"/> NO | |
| 5. Is the quantity of the food served according to the menu? | <input checked="" type="radio"/> YES | <input type="radio"/> NO | |
| 6. Are all inmate workers trained regarding proper hygiene? | <input checked="" type="radio"/> YES | <input type="radio"/> NO | |
| 7. Is soap available in the inmate/staff bathroom? | <input checked="" type="radio"/> YES | <input type="radio"/> NO | |
| 8. Are all inmate workers and staff wearing hair nets? | <input checked="" type="radio"/> YES | <input type="radio"/> NO | |
| 9. Are all inmate workers and staff handling food wearing gloves? | <input checked="" type="radio"/> YES | <input type="radio"/> NO | |
| 10. How many inmate workers are assigned to the food services department? | 130 inmates | | |
| 11. Are all inmate workers trained on proper handling of equipment? | <input checked="" type="radio"/> YES | <input type="radio"/> NO | |
| 12. Are knives issued according to procedure? | <input type="radio"/> YES | <input checked="" type="radio"/> NO | Used to, but now inmates use cheese cutter |
| 13. Are inmates supervised while using knives? | <input type="radio"/> YES | <input checked="" type="radio"/> NO | Use cheese cutter |
| 14. Is fire equipment operational and inspected according to schedule? | <input checked="" type="radio"/> YES | <input type="radio"/> NO | checked daily |
| 15. Is stored food wrapped and dated? | <input type="radio"/> YES | <input checked="" type="radio"/> NO | wrapper blew off meatloaf in freezer |
| 16. Are containers of food stored off of the ground? | <input checked="" type="radio"/> YES | <input type="radio"/> NO | |

Inspector: Jackson

Facility: LORCI
Date: 4-18-11

| | | | |
|--|--------------------------------------|-------------------------------------|-------------------------------------|
| 17. Is a safe distance maintained from the top of the stored food to the ceiling? | <input checked="" type="radio"/> YES | <input type="radio"/> NO | |
| 18. Are there any current pest issues? | <input checked="" type="radio"/> YES | <input type="radio"/> NO | Few Mice/Vermin |
| 19. What is the date of the last inspection by health inspectors? Did the facility pass? | Jan. 11, 2011 | | no violations |
| 20. How often is the cooking equipment sanitized? | After every | | meal |
| 21. Is a kite log maintained? | <input checked="" type="radio"/> YES | <input type="radio"/> NO | |
| 22. Are all chemicals secured? | <input checked="" type="radio"/> YES | <input type="radio"/> NO | |
| 23. Are dishes/utensils washed/rinsed at appropriate temperatures (was 150 degrees/rinse 180 degrees)? | <input checked="" type="radio"/> YES | <input type="radio"/> NO | |
| 24. Have there been any recent concerns regarding inmate health issues due to food? | YES | <input checked="" type="radio"/> NO | 7 2 hour fast traps after each meal |
| 25. Is the trash dock free of odors, loose garbage bags, and bugs? | <input checked="" type="radio"/> YES | <input type="radio"/> NO | Raining |
| 26. Do the coolers and freezers appear orderly and clean? | <input checked="" type="radio"/> YES | <input type="radio"/> NO | |
| 27. Are trays scraped in a different area from the food serving line? | <input checked="" type="radio"/> YES | <input type="radio"/> NO | |

ADDITIONAL COMMENTS:

- Cooking unwrapped throw away waste
- 140 Seating Capacity (Small side) } 1 unit each on @ - have ^{needed} replaced
- 244 other side } both sides
- Dumpster attached loading dock - pull out to dump
- Dry Foods + Freezers - Trest + Thors } 2 Freezers - 1 small, 1 large
- Produce - Wednesdays } 6 coolers -
- Bread - Mon, Tue, Thur, + Fri } @ - No maintenance issues

* = Just Got 2 Kettle's (March 2011)

- Used to have program here
Culinary Program (no one enrolled)

Inspector: Furderer

Facility: Lorain CI
Date: 4-18-11

AREA INSPECTED: RECREATION

| | | COMMENTS |
|--|---|---|
| 1. Are programs available to all inmates? | <input checked="" type="radio"/> YES <input type="radio"/> NO | |
| 2. How many staff are assigned to supervise inmates? | two | - one recreation therapist - one officer |
| 3. Are programs posted for inmate information? | <input checked="" type="radio"/> YES <input type="radio"/> NO | |
| 4. Is equipment cleaned and sanitized on a regular basis? | <input checked="" type="radio"/> YES <input type="radio"/> NO | |
| 5. Are cleaning materials kept secure? | <input checked="" type="radio"/> YES <input type="radio"/> NO | |
| 6. Does recreation equipment appear to be in good working order? | <input checked="" type="radio"/> YES <input type="radio"/> NO | |
| 7. How many inmate workers are assigned to the recreation department? | approximately nine | - three barbers - six recreation porters |
| 8. Are inmate workers trained and is this documented? | <input checked="" type="radio"/> YES <input type="radio"/> NO | |
| 9. Is a kite log maintained? | <input checked="" type="radio"/> YES <input type="radio"/> NO | |
| 10. Are programs available for inmates with disabilities? | <input checked="" type="radio"/> YES <input type="radio"/> NO | - have designated program for 50 and over inmates |
| ADDITIONAL COMMENTS (including description of recreational areas): | | |
| <ul style="list-style-type: none"> - currently doing basketball tournament right now - large gym inside with various activities including <ul style="list-style-type: none"> - volleyball - basketball - ping pong - corn hole - dip and pull up bars, sit up benches - separate TV room and fitness room - fitness room has treadmills, stairclimbers, and body weight exercise equipment - outside recreation has a few basketball courts and softball fields - barber room is also located inside | | |

Inspector: Furderer

Facility: Lor CI
Date: 4-18-11

AREA INSPECTED: COMMISSARY

| | | COMMENTS |
|--|---|---|
| 1. How many inmates work in the commissary at this institution? | Six right now | - based on need |
| 2. How many staff members supervise the inmates during the hours of operation? | three | - one commissary manager - two assistant managers |
| 3. How much money are inmates permitted to spend? | \$45 per week + \$65 per week | - Cadre \$65 per week - reception inmates \$45 per week |
| 4. How often are commissary prices increased? | NOT often | - based on vendor increase - only about 5% of the products are increased |
| 5. Are inmates notified of changes to commissary prices? | YES NO | - they receive updated list every week - changes daily |
| 6. What items are most popular? | - chips - cookies - sell a lot of hygiene items | |
| 7. Are there any items you think should be added or removed from the commissary? | have list of about 20 that do not sell | - items are from directives - cannot comment on mandatory items per policy |
| 8. Are areas clean? | YES NO | |
| 9. Have you had any issues with pests/rodents? | YES NO | - nothing out of the ordinary |
| 10. How often does the exterminator visit? | biweekly | |
| 11. Is the inventory organized and stored properly? | YES NO | |
| 12. Is Inventory taken Monthly? | YES NO | |
| 13. Have you had any inventory issues? (missing items, etc) | YES NO | - usually a receiving issue if any thing |
| 14. Have there been any issues of inmate theft from the commissary? | YES NO | - always - figure out who did it and get rid of them - identify by taking inventory |
| 15. Are inmates searched before and after their shifts? | YES NO | - inmates are searched after - they know they are not permitted to bring in anything |

Inspector: Furderer

Facility: Lorain
Date: 4-18-11

| | | |
|---|--|--|
| 16. How often are there problems of inmates using stolen IDs? | not often | |
| 17. What procedures are in place to ensure that inmates do not steal and then use other inmates' IDs? | - use lock boxes - inmates put ID and commissary order form in box and do not get it back until their order is filled | |
| 18. How often are deliveries made? | once per week | |
| 19. How often do you run out of OTC Meds -Tylenol - never -Prilosec - never -Fish Oil - never | never | - vendors are pretty good about ensuring they have these items - ran out of vitamins for a brief period last week |
| 20. What is the average hourly/monthly wage for inmates in commissary? | \$15 per month | |
| 21. How could the commissary be more efficient/profitable? | raise limit on what they can buy | - Could create problems though - other option would be to increase markup |
| <p>ADDITIONAL COMMENTS (including description of area):</p> <ul style="list-style-type: none"> - inmates receive updated commissary sheets with updated individual account balance once per week - Commissary Manager uses various vendors from Ohio - average markup is 23% | | |

SECTION IX. GLOSSARY OF TERMS

A

- Administrative Assistant (AA) – Staff member who is an assistant to the Warden and typically responsible for reviewing RIB (Rules Infraction Board) decisions and RIB appeals.
- Adult Basic Education (ABE)/Literacy – Literacy classes are for student with reading levels at 226 and below the CASAS. The ABE/Literacy Unit consist of two afternoon sessions. Students attend school approximately 1 ½ hours each day on Monday – Thursday. Students work individually or in small groups with tutors and focus on improving their reading and math skills. All tutors in the ABE/Literacy Unit are certified through a 10 hour training course.

B

- Brunch – Served on weekends as a cost savings initiative.
- Bureau of Classification – Office located at DRC Operations Support Center responsible with the ultimate authority for inmate security levels, placement at institutions, as well as transfers.
- Bureau of Medical Services – Office located at DRC Operations Support Center responsible for direct oversight of medical services at each institution.
- Bureau of Mental Health Services – Office located at DRC Operations Support Center responsible for direct oversight of Mental Health Services at each institution.

C

- Case Manager – Staff member responsible for assisting inmates assigned to their case load and conducting designated core and authorized reentry programs.
- Cellie/Bunkie – An inmate’s cellmate or roommate.
- Chief Inspector – Staff member at DRC Operations Support Center responsible for administering all aspects of the grievance procedure for inmates, rendering dispositions on inmate grievance appeals as well as grievances against the Wardens and/or Inspectors of Institutional Services.
- Classification/Security Level – System by which inmates are classified based on the following: current age; seriousness of the crime; prior offenses; most recent violence (not including the current offense); gang activity before going to prison; and present and past escape attempts.
- Close Security – See Level 3
- Computer Voice Stress Analysis (CVSA) – A device, which electronically detects, measures, and charts the stress in a person’s voice following a pre-formatted questionnaire. Used as a truth seeking device for investigations.
- Conduct Report/Ticket – Document issued to inmate for violating a rule.
- Contraband – items possessed by an inmate which, by their nature, use, or intended use, pose a threat to security or safety of inmates, staff or public, or disrupt the orderly operation of the facility. items possessed by an inmate without permission and the location in which these items are discovered is improper; or the quantities in which an allowable item is possessed is prohibited; or the manner or method by which the item is obtained was improper; or an allowable item is possessed by an inmate in an altered form or condition.

D

- Deputy Warden of Operations (DWO) – Staff member at each institution in charge of monitoring the Major, custody staff, the Unit Management Administrator, Unit Managers, Case Managers, and the locksmith. Other areas include count office, mail/visiting, Rules Infraction Board, segregation unit, and recreation. The Deputy Warden of Operations is also responsible for reviewing use of force reports and referring them to a Use of Force Committee when necessary for further investigation.
- Deputy Warden of Special Services (DWSS) – Staff member at each institution in charge of monitoring education, the library, inmate health services, recovery services, mental health services, religious services, Ohio Penal Industries, and food service.
- Disciplinary Control (DC) – The status of an inmate who was found guilty by the Rules Infraction Board and his or her penalty is to serve DC time. An inmate may serve up to 15 days in DC.

F

- Food Service Administrator – An employee within the Office of Administration Services educated in food service management and preparation, to manage DRC food service departments.

G

- GED/PRE-GED – Pre-GED classes are for those who have a reading score between a 227 through 239 on level C or higher of the CASAS test. GED classes are for those who have a reading score of 240 on level C or higher on the CASAS test. Students attend class 1 ½ hours each day, Monday – Thursday. Students study the five subjects measured by the GED. In addition to class work, students are given a homework assignment consisting of a list of vocabulary words to define and writing prompt each week. All GED and Pre-GED tutors are certified through a 10-hour training course.
- General Population (GP) – Inmates not assigned to a specialized housing unit.

H

- Health Care Administrator (HCA) – The health care authority responsible for the administration of medical services within the institution. This registered nurse assesses, directs, plans, coordinates, supervises, and evaluates all medical services delivered at the institutional level. The HCA interfaces with health service providers in the community and state to provide continuity of care.
- Hearing Officer – The person(s) designated by the Managing Officer to conduct an informal hearing with an inmate who received a conduct report.
- Hooch – An alcoholic beverage.

I

- Industrial and Entertainment (I and E) Funds – Funds created and maintained for the entertainment and welfare of the inmates.
- Informal Complaint Resolution (ICR) – The first step of the Inmate Grievance Procedure (IGP). Inmates submit ICRs to the supervisor of the staff member who is the cause of the complaint. Staff members are to respond within seven calendar days. Timeframe may be waived for good cause.

- Inmate Grievance Procedure (IGP) – A three step process whereby inmates may document and report concerns, problems, or issues.
- Inspector of Institutional Services (IIS) – Staff person at the institution in charge of facilitating the inmate grievance procedure, investigating and responding to inmate grievances, conducting regular inspections of institutional services, serving as a liaison between the inmate population and institutional personnel, reviewing and providing input on new or revised institutional policies, procedures and post orders, providing training on the inmate grievance procedure and other relevant topics, and any other duties as assigned by the Warden or Chief Inspector that does not conflict with facilitating the inmate grievance procedure or responding to grievances.
- Institutional Separation – An order wherein two or more inmates are not assigned to general population in the same institution due to a concern for the safety and security of the institution, staff, and/or other inmates.
- Intensive Program Prison (IPP) – Refers to several ninety-day programs, for which certain inmates are eligible, that are characterized by concentrated and rigorous specialized treatment services. An inmate who successfully completes an IPP will have his/her sentence reduced to the amount of time already served and will be released on post-release supervision for an appropriate time period.
- Interstate Compact – The agreement codified in ORC 5149.21 governing the transfer and supervision of adult offenders under the administration of the National Interstate Commission.

K

- Kite – A written form of communication from an inmate to staff.

L

- Local Control (LC) – The status of an inmate who was referred to the Local Control Committee by the Rules Infraction Board. The committee will decide if the inmate has demonstrated a chronic inability to adjust to the general population or if the inmate's presence in the general population is likely to seriously disrupt the orderly operation of the institution. A committee reviews the inmate's status every 30 days for release consideration. The inmate may serve up to 180 days in LC.
- Local Separation – An order wherein two or more inmates are not permitted to be assigned to the same living and/or work area, and are not permitted simultaneous involvement in the same recreational or leisure time activities to ensure they are not in close proximity with one another.

N

- Notification of Grievance (NOG) – The second step of the Inmate Grievance Procedure (IGP). The NOG is filed to the Inspector of Institutional Services and must be responded to within 14 calendar days. Timeframe may be waived for good cause.

M

- Maximum Security – See Level 4
- Medium Security – See Level 2

- Mental Health Caseload – Consists of offenders with a mental health diagnosis who receive treatment by mental health staff and are classified as C-1 (SMI) or C-2 (Non-SMI).
- Minimum Security – See Level 1

O

- Ohio Central School System (OCSS) – The school district chartered by the Ohio Department of Education to provide educational programming to inmates incarcerated within the Ohio Department of Rehabilitation and Correction.
- Ohio Penal Industries (OPI) – A subordinate department of the Department of Rehabilitation and Correction. OPI manufactures goods and services for ODRC and other state agencies.

P

- Parent Institution – The institution where an inmate is assigned to after reception and will be the main institution where the inmate serves his or her time. The parent institution is subject to change due to transfers.
- Protective Control (PC) – A placement for inmates whose personal safety would be at risk in the General Population (GP).

R

- Reentry Accountability Plan (RAP) – Plan for inmates, which includes the static risk assessment, dynamic needs assessment, and program recommendations and participation.
- Residential Treatment Unit (RTU) – The Residential Treatment Unit is a secure, treatment environment that has a structured clinical program. All offenders enter at the Crisis and Assessment Level (Level 1). This level is designed to assess conditions and provide structure for the purpose of gaining clinical information or containing a crisis. The disposition of the assessment can be admission to the treatment levels of the RTU, referral to OCF, or referral back to the parent institution.
- Rules Infraction Board (RIB) – A panel of two staff members who determine guilt or innocence when an inmate receives a conduct report or ticket for disciplinary reasons.

S

- Security Control (SC) – The status of an inmate who is pending a hearing by the Rules Infraction Board for a rule violation, under investigation or pending institutional transfer and needs to be separated from the general population. Inmates may be placed in SC for up to seven days. The seven day period can be extended if additional time is needed.
- Security Level/Classification – System by which inmates are classified based on the following: current age; seriousness of the crime; prior offenses; most recent violence (not including the current offense); gang activity before going to prison; and present and past escape attempts.
 - Level 1A Security (Minimum) – The lowest security level in the classification system. Inmates classed as Level 1 have the most privileges allowed. Inmates in Level 1 who meet criteria specified in DRC Policy 53-CLS-03, Community Release Approval Process, may be eligible to work off the grounds of a correctional institution. Level 1A inmates may be housed at a correctional camp with or without a perimeter fence and may work outside the fence under periodic supervision. Level 1A replaces the classification previously known as “Minimum 1 Security.”

- Level 1B Security (Minimum) – The second lowest level in the classification system. Level 1B inmates may be housed at a correctional camp with a perimeter fence and may work outside of the fence under intermittent supervision. However, Level 1B inmates who are sex offenders are not permitted to work or house outside of a perimeter fence. Level 1B inmates may not work off the grounds of the correctional institution. Level 1B replaces the classification previously known as “Minimum 2 Security.”
- Level 2 Security (Medium) – A security level for inmates who are deemed in need of more supervision than Level 1 inmates, but less than Level 3 inmates. Level 2 replaces the classification previously known as “Medium Security.”
- Level 3 Security (Close) – This is the security level that is the next degree higher than Level 2, and requires more security/supervision than Level 2, but less than Level 4. Level 3 replaces the classification previously known as “Close Security.”
- Level 4 Security (Maximum) – This is the security level that is the next degree higher than Level 3, and requires more security/supervision than Level 3, but less than Level 5. It is the security level for inmates whose security classification score at the time of placement indicates a need for very high security. It is also a classification for those who are involved in, but not leading others to commit violent, disruptive, predatory or riotous actions, and/or a threat to the security of the. Level 4 replaces the classification previously known as “Maximum Security.”
- Level 4A Security (Maximum) – A less restrictive privilege level, which inmates may be placed into by the privilege level review committee with the Warden/Designee’s approval, after a review of the inmate’s status in level 4.
- Level 4B Security (Maximum) – The most restrictive privilege level assigned to an inmate classified into level 4.
- Level 5 Security (Supermax) – A security level for inmates who commit or lead others to commit violent, disruptive, predatory, riotous actions, or who otherwise pose a serious threat to the security of the institution as set forth in the established Level 5 criteria. Level 5 replaces the classification previously known as “High Maximum Security.”
- Level 5A Security (Supermax) – A less restrictive privilege level, which inmates may be placed into by the privilege level review committee with the Warden/Designee’s approval, after a review of the inmate’s status in level 5.
- Level 5B Security (Supermax) – The most restrictive privilege level assigned to an inmate classified into level 5.
- Security Threat Group (STG) – Groups of inmates such as gangs that pose a threat to the security of the institution.
- Separation – See Institutional Separation and Local Separation
- Seriously Mentally Ill (SMI) – Inmates who require extensive mental health treatment.
- Shank – Sharp object manufactured to be used as a weapon.
- Special Management Housing Unit (SMHU)/Segregation – Housing unit for those assigned to Security Control, Disciplinary Control, Protective Control, and Local Control.
- Supermax Security – See Level 5

T

- Telemedicine – A two-way interactive videoconferencing system that allows for visual and limited physical examination of an inmate by a physician specialist while the inmate remains at his/her prison setting and the physician specialist remains at the health care facility. It also includes educational and administrative uses of this technology in the support of health care, such as distance learning, nutrition counseling and administrative videoconferencing.
- Transitional Control – Inmates approved for release up to 180 days prior to the expiration of their prison sentence or release on parole or post release control supervision under closely monitored supervision and confinement in the community, such as a stay in a licensed halfway house or restriction to an approved residence on electronic monitoring in accordance with section 2967.26 of the Ohio Revised Code.
- Transitional Education Program (TEP) – Learn skills to successfully re-enter society. Release dated within 90-180 days.

U

- Unit Management Administrator (UMA) – Staff member responsible for overseeing the roles, responsibilities and processes of unit management staff in a decentralized or centralized social services management format. The UMA may develop centralized processes within unit management, while maintaining the unit based caseload management system for managing offender needs. The UMA shall ensure that at least one unit staff member visits the special management areas at least once per week and visits will not exceed seven days in between visits.
- Unit Manager (UM) – Staff member responsible for providing direct supervision to assigned unit management staff and serving as the chairperson of designated committees. Unit Managers will conduct rounds of all housing areas occupied by inmates under their supervision.

W

- Warden – Top administrator at each correctional institution.

Ohio Department of Rehabilitation and Correction Institution Acronyms

| | |
|--|-------|
| Allen Correctional Institution | ACI |
| Belmont Correctional Institution | BeCI |
| Chillicothe Correctional Institution | CCI |
| Correctional Reception Center | CRC |
| Corrections Medical Center | CMC |
| Dayton Correctional Institution | DCI |
| Franklin Pre-Release Center | FPRC |
| Grafton Correctional Institution | GCI |
| Hocking Correctional Facility | HCF |
| Lake Erie Correctional Institution | LaeCI |
| Lebanon Correctional Institution | LeCI |
| London Correctional Institution | LoCI |
| Lorain Correctional Institution | LorCI |
| Madison Correctional Institution | MaCI |
| Mansfield Correctional Institution | ManCI |

| | |
|---|-------|
| Marion Correctional Institution | MCI |
| Noble Correctional Institution | NCI |
| North Central Correctional Institution..... | NCCI |
| North Coast Correctional Treatment Facility | NCCTF |
| Northeast Pre-Release Center | NEPRC |
| Oakwood Correctional Facility..... | OCF |
| Ohio Reformatory for Women..... | ORW |
| Ohio State Penitentiary | OSP |
| Pickaway Correctional Institution | PCI |
| Richland Correctional Institution | RiCI |
| Ross Correctional Institution | RCI |
| Southeastern Correctional Institution | SCI |
| Southern Ohio Correctional Facility..... | SOCF |
| Toledo Correctional Institution..... | ToCI |
| Trumbull Correctional Institution..... | TCI |
| Warren Correctional Institution..... | WCI |